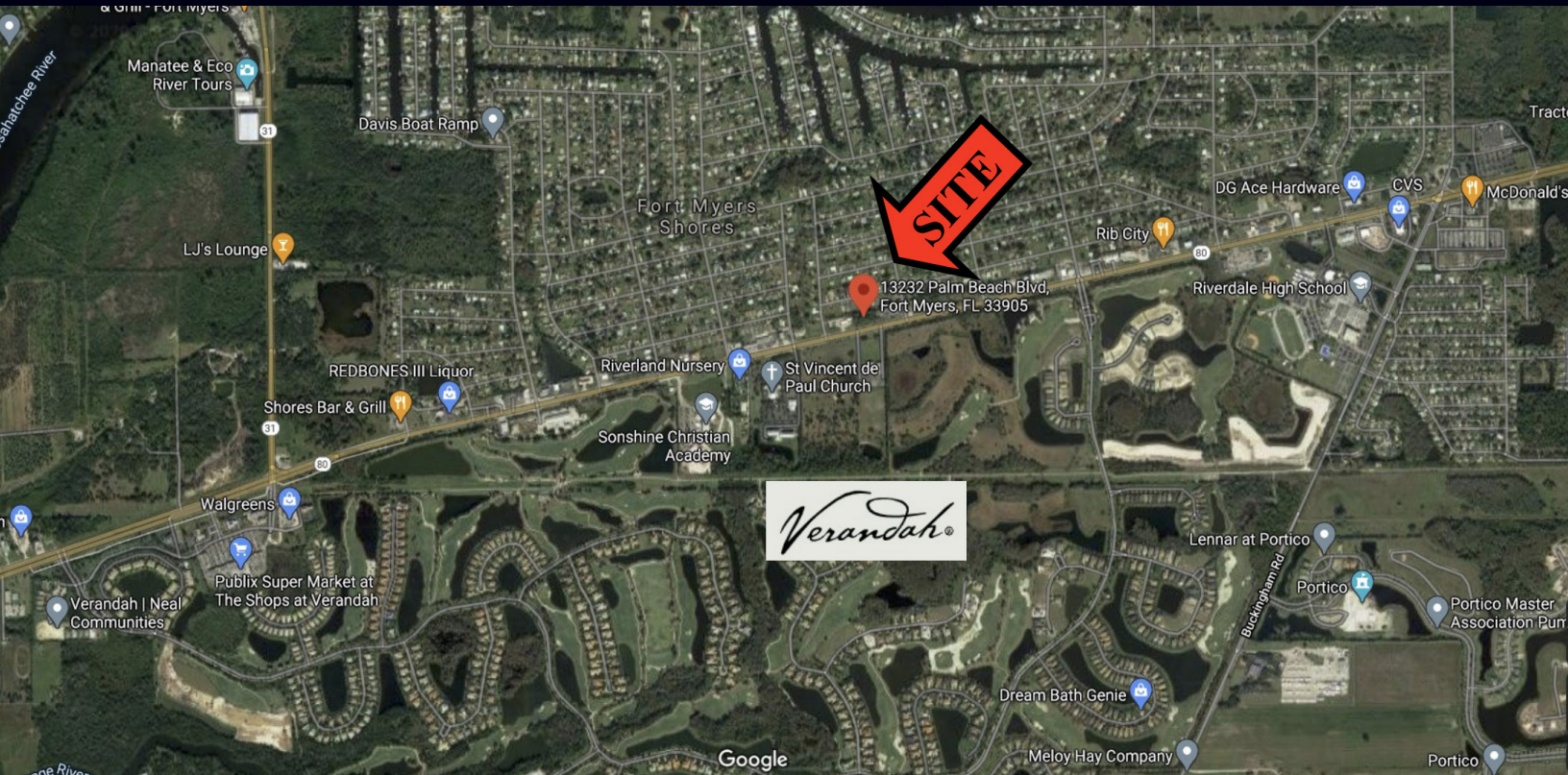


.69+/- ACRE COMMERCIAL PARCEL

13232 Palm Beach Blvd

FORT MYERS, FL 33905

**Boback
Commercial
Group**
Commercial Sales & Leasing



FOR SALE: \$759,000

ABOUT THE PROPERTY

Highly visible infill parcel with 250 feet of frontage on State Road 80(Palm Beach Blvd). Located midway between SR 31 and Buckingham Road. 15 minutes from downtown Ft. Myers .4 miles to I -75 exit 141.

PROPERTY FEATURES

- Lot Size: .69 acres+/- | 250 x 120 | 30,000 sqft
- Traffic Count: 43,000 AADT
- Zoning: C1 - Commercial (Lee County)
- Utilities: Water and sewer
- Property Taxes \$1,896.98 (2024)
- STRAP#: 29-43-26-03-00037.070



Retail • Office • Auto Parts/Service
Business Services • Medical Office
Vehicle Sales • Restaurant • and more

JIM BOBACK, CCIM
Broker/Owner - Boback Commercial Group

C 239-565-2616 • O 239-466-7770
JB@BobackCommercialGroup.com
www.BobackCommercialGroup.com

This document has been prepared by Boback Commercial Group for advertising and general information only. Boback Commercial Group makes no guarantees, representations or warranties of any kind, expressed or implied, regarding the information including, but not limited to, warranties of content, accuracy and reliability. Any interested party should undertake their own inquiries as to the accuracy of the information.