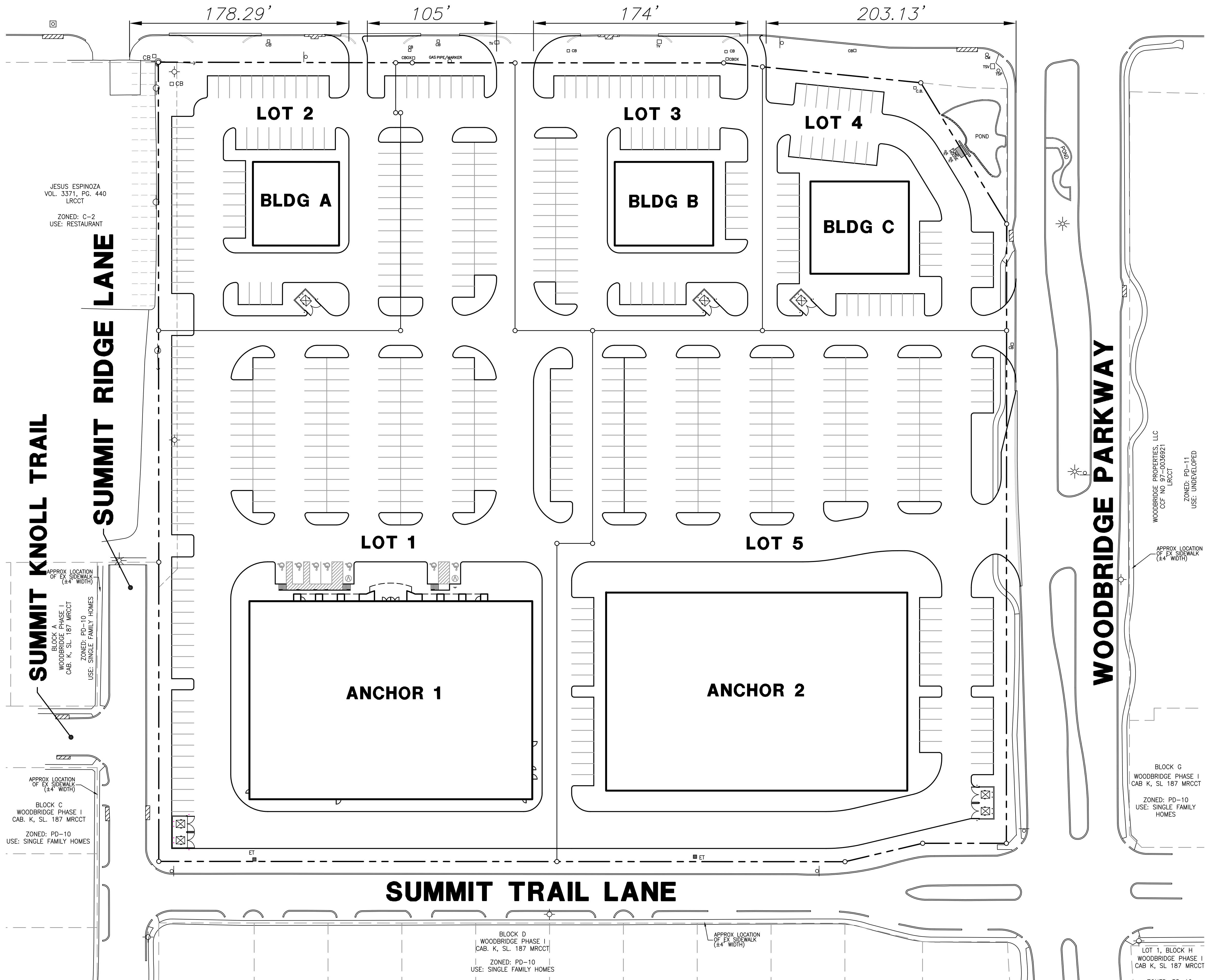
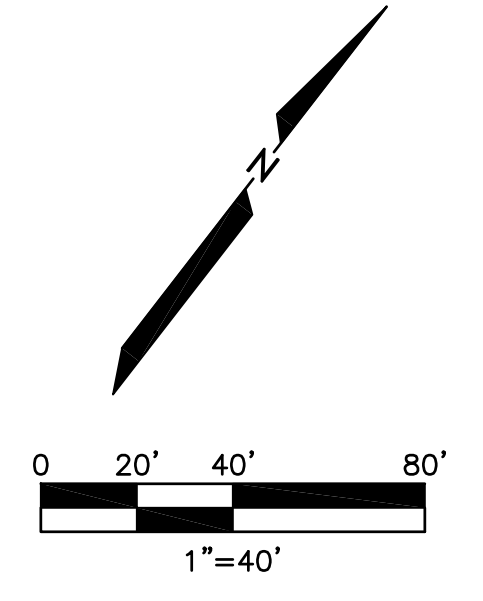
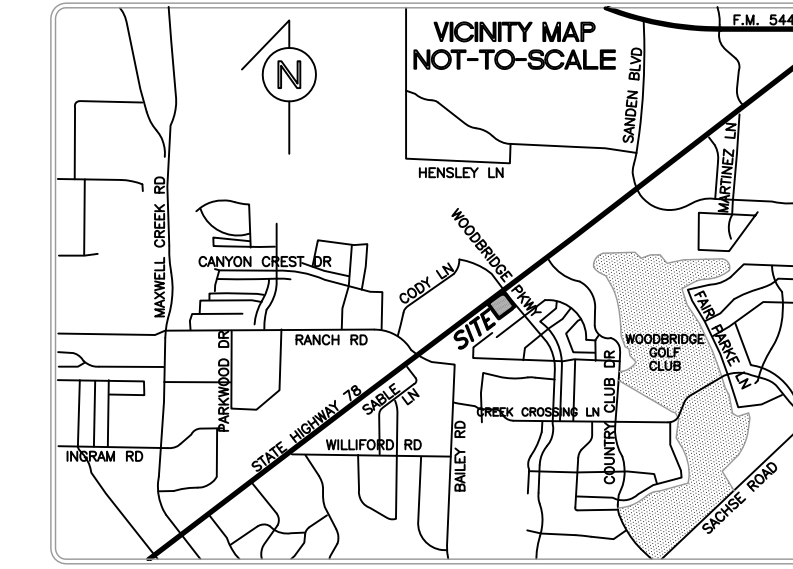


# STATE HIGHWAY 78



JESUS ESPINOZA  
VOL. 3371, PG. 440  
LRCC

ZONED: C-2  
USE: RESTAURANT

**SUMMIT KNOLL TRAIL**

**SUMMIT RIDGE LANE**

**WOODBIDGE PARKWAY**

**SUMMIT TRAIL LANE**

APPROX LOCATION OF EX SIDEWALK (24' WIDTH)  
BLOCK A  
WOODBIDGE PHASE I  
CAB. K, SL. 187 MRCCT  
ZONED: PD-10  
USE: SINGLE FAMILY HOMES

APPROX LOCATION OF EX SIDEWALK (24' WIDTH)  
BLOCK C  
WOODBIDGE PHASE I  
CAB. K, SL. 187 MRCCT  
ZONED: PD-10  
USE: SINGLE FAMILY HOMES

BLOCK D  
WOODBIDGE PHASE I  
CAB. K, SL. 187 MRCCT  
ZONED: PD-10  
USE: SINGLE FAMILY HOMES

APPROX LOCATION OF EX SIDEWALK (24' WIDTH)

WOODBIDGE PROPERTIES, LLC  
CCF NO 97-0036921  
LRCC  
ZONED: PD-11  
USE: UNDEVELOPED

APPROX LOCATION OF EX SIDEWALK (24' WIDTH)

BLOCK G  
WOODBIDGE PHASE I  
CAB K, SL 187 MRCCT  
ZONED: PD-10  
USE: SINGLE FAMILY HOMES

LOT 1, BLOCK H  
WOODBIDGE PHASE I  
CAB K, SL 187 MRCCT  
ZONED: PD-10

PRELIMINARY - REVIEW/COORDINATION PURPOSES ONLY

REV	DATE	REMARKS

**SITE PLAN**  
WOODBIDGE GATE  
LOTS 1-5, BLOCK A, WOODBRIDGE GATE ADDITION  
THE CITY OF SACHSE, TEXAS

**CATES-CLARK**  
14800 Quorum Drive, Suite 200  
Dallas, Texas 75254  
Office: 972-385-2777 Fax: 972-988-1627  
TBP# E-3751

DESIGN	DRAWN	DATE	SCALE	NOTES	FILE	NO.
CCA	CCA	11/24/14	BSSM	008-026	SITE PLAN	

R:\WORK\0806\0806\OUT\REV\2015-11-24\Addtl TYPOT\Drawings\2014-11-24\SITE PLAN.dwg, L: 11/24/2015 8:55:05 AM, 1:1