

1105 Schrock Road

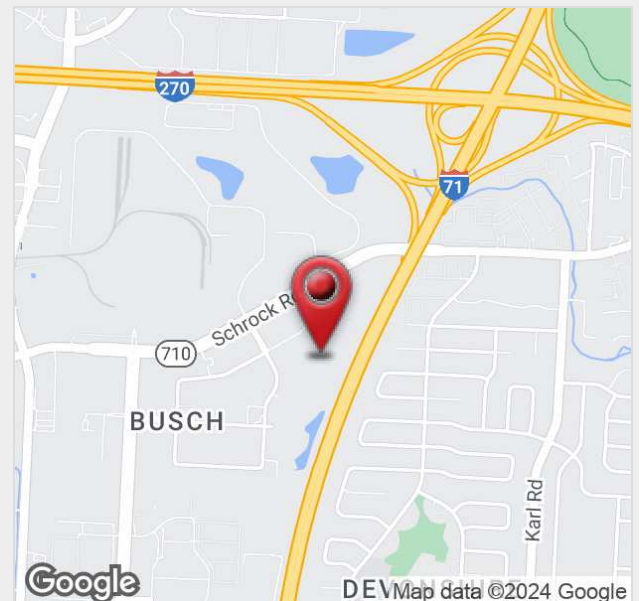
1105 Schrock Road, Columbus, Ohio 43229

Property Features

- Prominent Office Building in Desirable Worthington Submarket
- Excellent Freeway Visibility
- Suite 305 | 9,959 SF Available
- Suite 400 | 28,343 SF Available
- Mix of Private Offices, Conference Rooms & Open Work Space
- Large Training Room within Suite
- Existing Furniture to Remain
- Building Amenities include a Full-Service Cafe & Two Common Conference Rooms
- 4/1,000 SF Parking Ratio
- Sublease Expires 07/31/2030

Lease Rate: \$15.95 SF/Yr (Full Service)

www.schrocksublease.com



For more information:

Philip Bird, SIOR

614 629 5296 • pbird@ohioequities.com

Matt Gregory, SIOR, CCIM

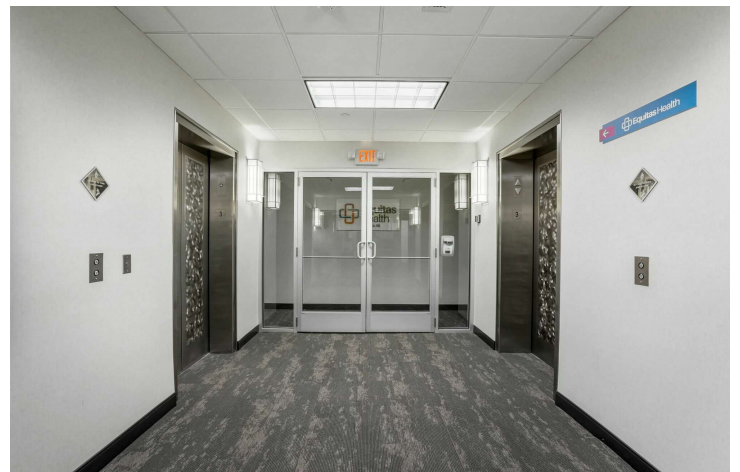
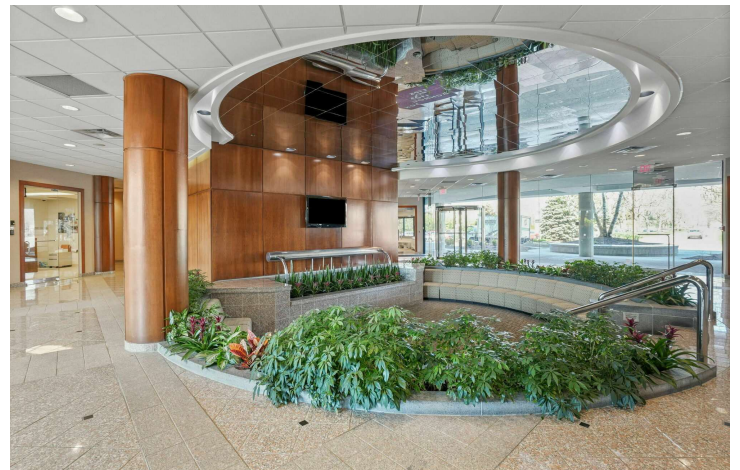
614 629 5234 • mgregory@ohioequities.com

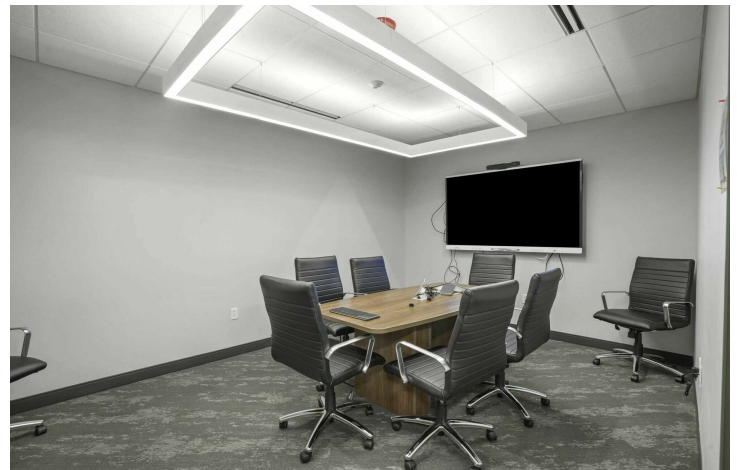
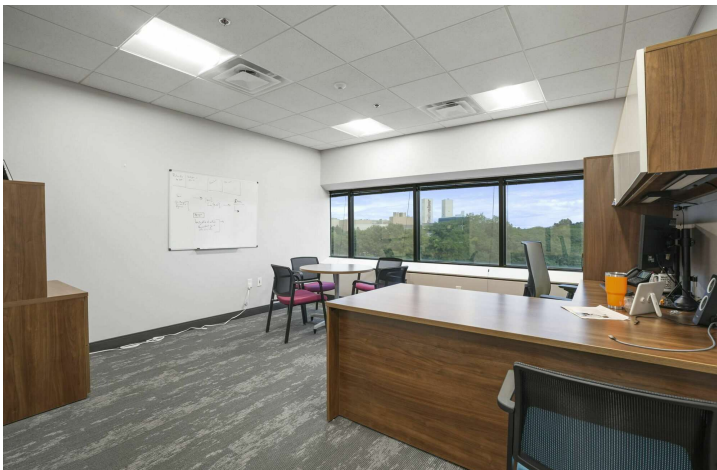


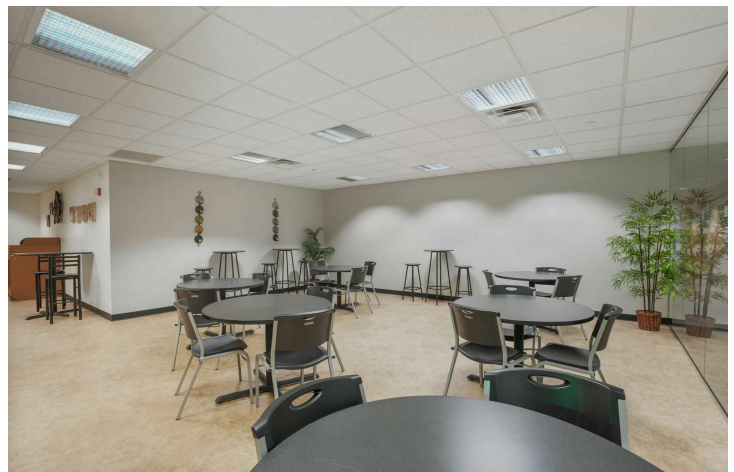
1 04 LEVEL - FLOORPLAN
SCALE 1" = 10'-0"

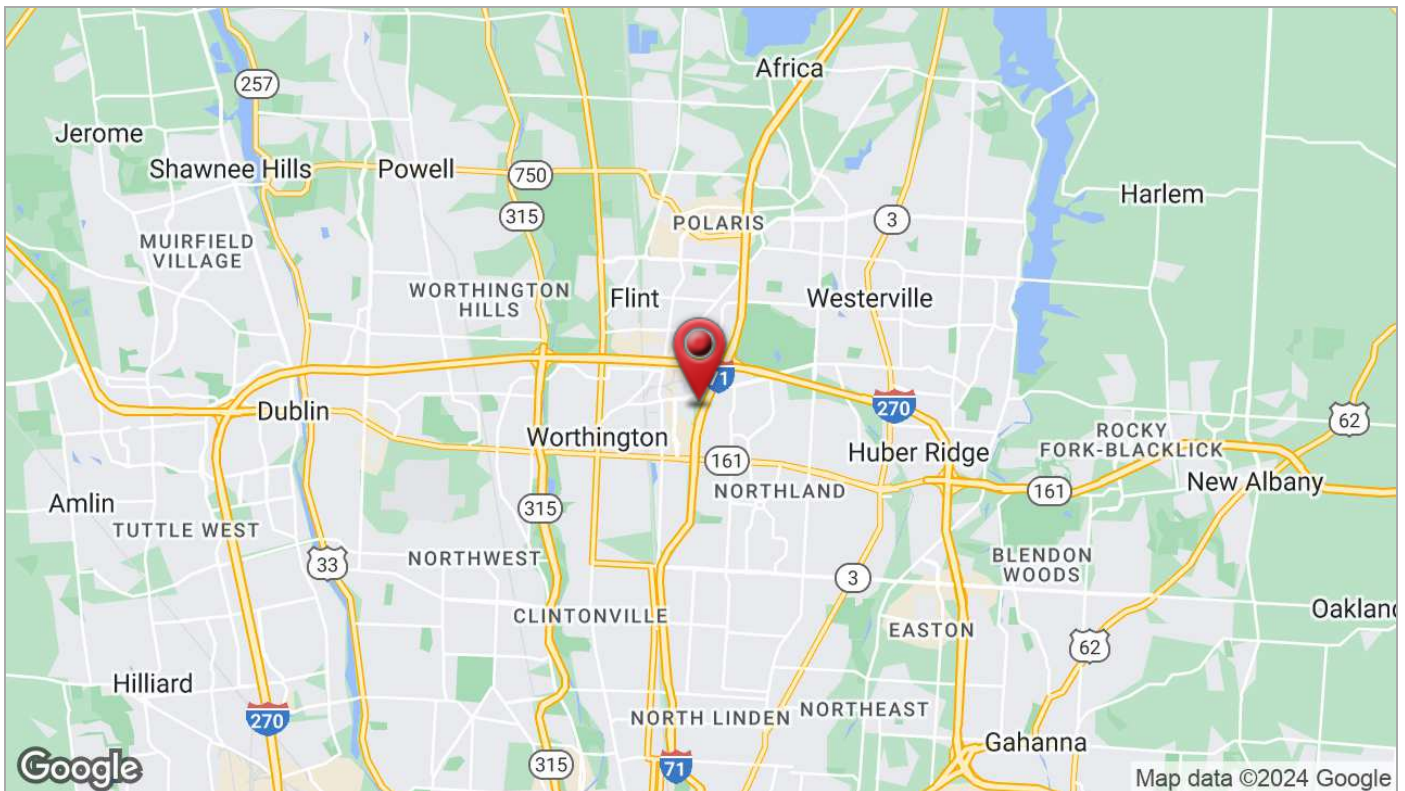
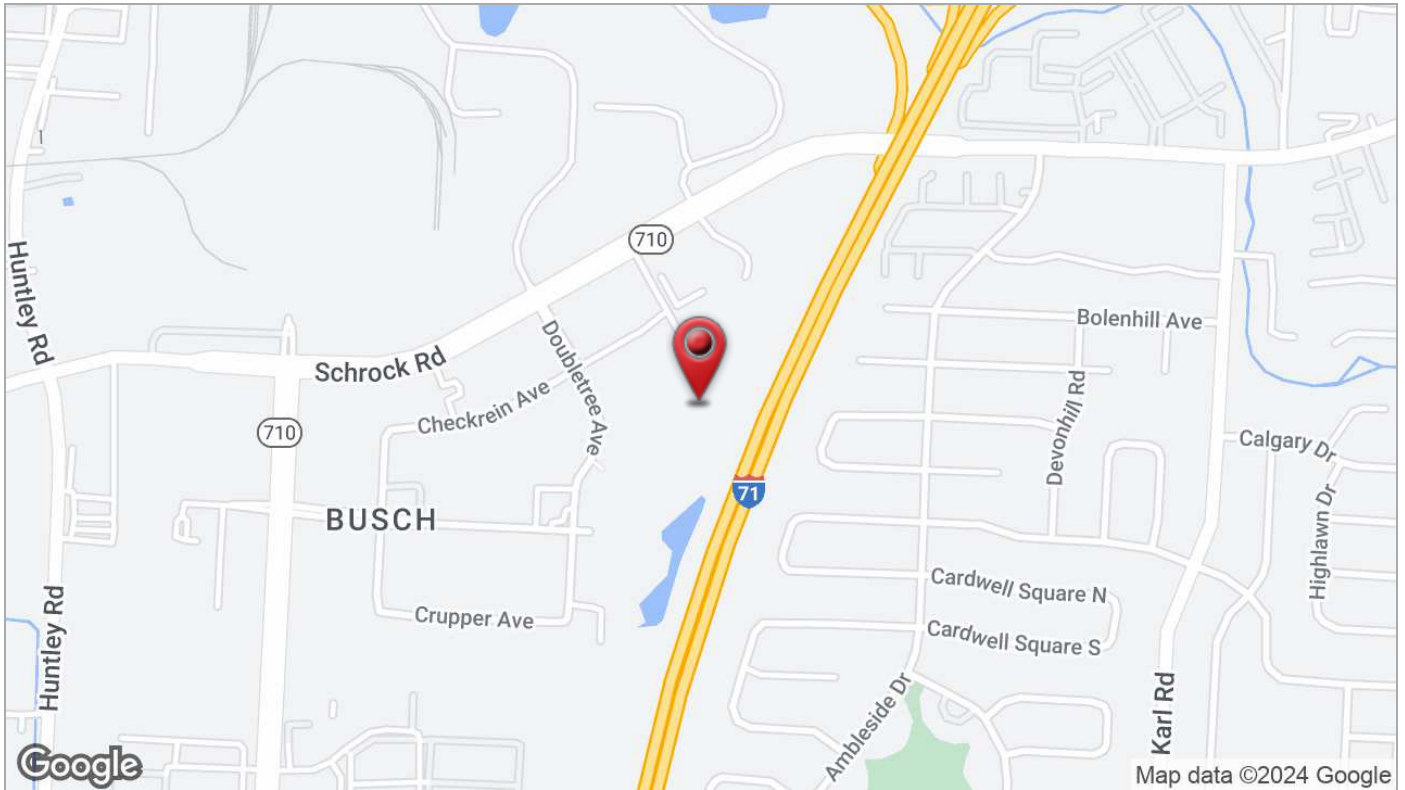


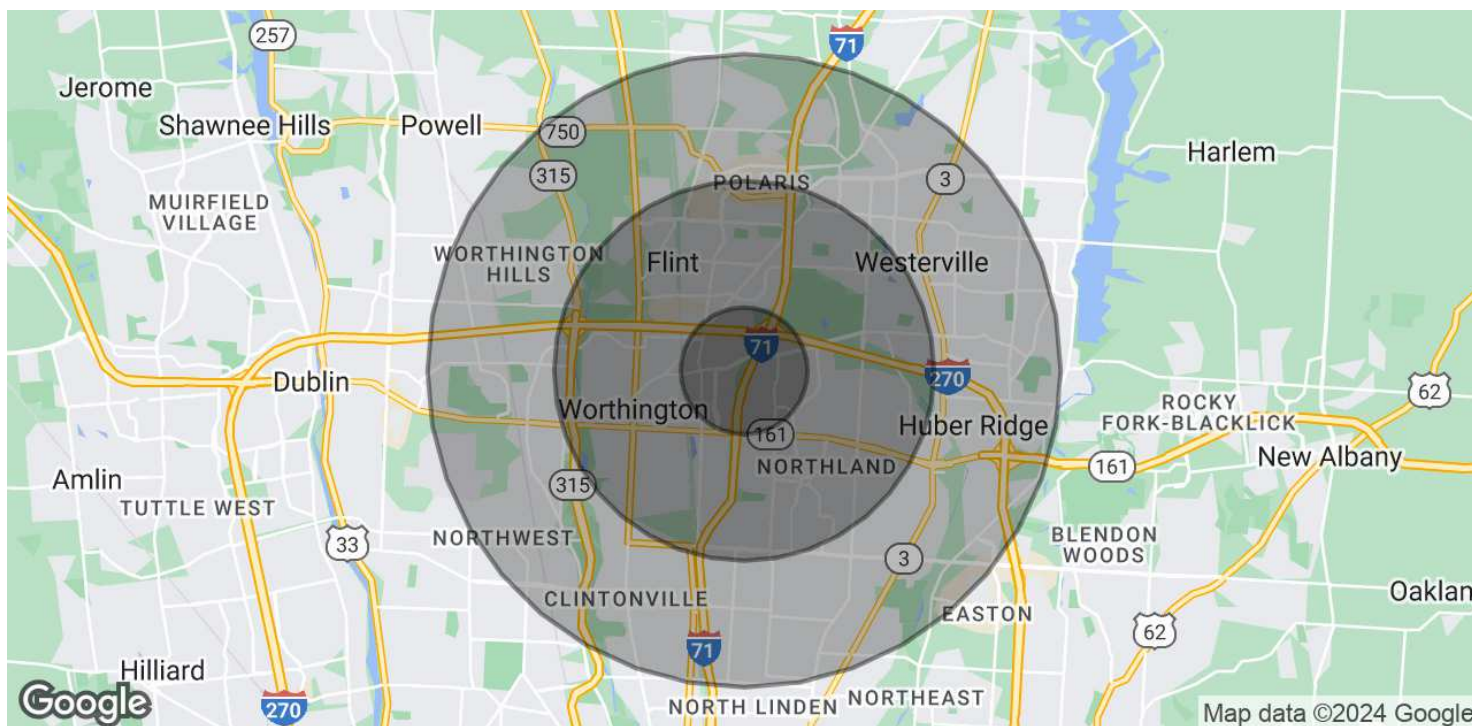
1 03 LEVEL - FF&E PLAN
SCALE 1/8" = 1'-0"











POPULATION	1 MILE	3 MILES	5 MILES
Total Population	13,325	124,605	301,533
Average Age	36	38	38
Average Age (Male)	36	36	37
Average Age (Female)	37	39	39
HOUSEHOLDS & INCOME	1 MILE	3 MILES	5 MILES
Total Households	5,387	50,912	122,961
# of Persons per HH	2.5	2.4	2.5
Average HH Income	\$69,879	\$93,345	\$105,580
Average House Value	\$211,699	\$303,556	\$325,419

Demographics data derived from AlphaMap