

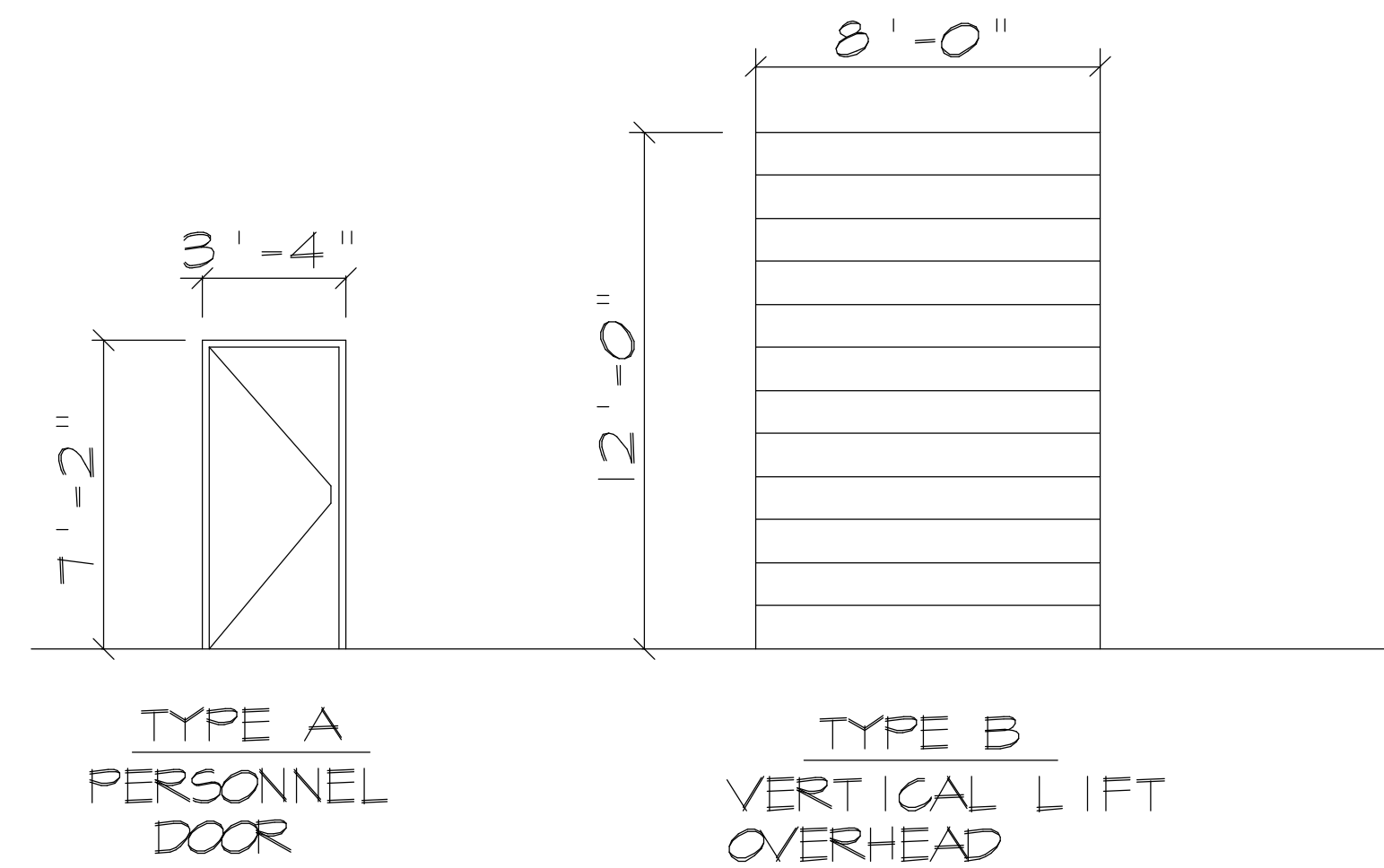
Mark	Date
△	4/20/22
△	6/3/22

**PLAN NOTES:**

1. VERIFY ALL DIMENSIONS WITH THE BUILDING MANUFACTURER'S DRAWINGS.
2. SEE SHEETS T-1 AND S-4 FOR ADDITIONAL NOTES.
3. SEE SHEET S-2 FOR THE SECTIONS AND TYPICAL DETAILS. SEE SHEET S-3 FOR THE TYPICAL BUILDING CROSS SECTION A-A.
4. ELEVATIONS ARE BASED ON REFERENCED FIRST FLOOR ELEVATION (0'-0"). SEE THE SECTIONS FOR THE ACTUAL ELEVATION.
5. DIMENSIONS ARE TO METAL BUILDING STEEL LINE (\$) AND TO FACE OF CONCRETE FOUNDATION.
6. FIRE RATED WALL ON LINE A: 1 HOUR RATING PER U-425 & U-469 WHERE CONNECTED TO EACH GIRT: 2 1/2" - 20 GA. CT STUDS AT 24" 1" LINER PANEL NEXT TO GIRTS, 5/8" FIRECODE 'X' ON INSIDE FACE WHERE NOT CONNECTED TO GIRTS: 6" - 20 GA. CT STUDS AT 24" 1" LINER PANEL NEXT TO GIRTS, 5/8" FIRECODE 'X' ON INSIDE FACE AROUND COLUMNS: 2 1/2" - 20 GA. CT STUDS AT 24", CLIPPED TO COLUMN 1" LINER PANEL NEXT TO COL, 5/8" FIRECODE 'X' ON INSIDE FACE

**PLAN LEGEND:**

- PIPE BOLLARD
- \$ METAL BUILDING STEEL LINE
- ▲ EMERGENCY SIGN EXIT/LIGHT
- (X) DOOR MARK- SEE SCHEDULE
- [x.x'] ACTUAL ELEVATION (CONTRACTOR TO COORD. WITH SITE PLAN)



**DOOR TYPES**

SCALE: 1/4" = 1'-0"

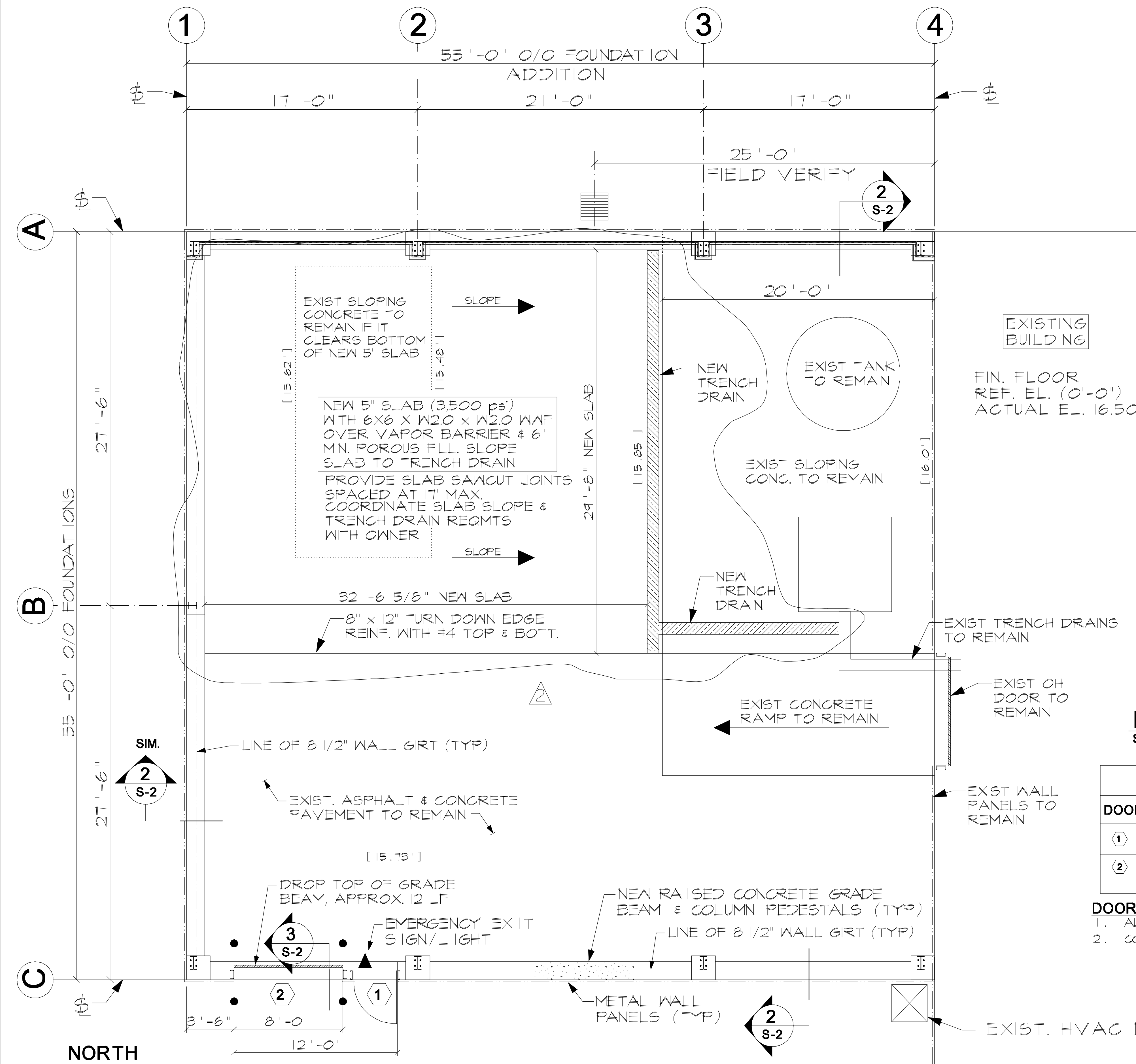
**DOOR SCHEDULE**

DOOR	DOOR SIZE/DESCRIPTION	OPENING SIZE	TYPE	FRAME
①	3'-0" x 7'-0" HOLLOW METAL (U-0.61 INSULATION)	3'-4" x 7'-2"	A	ALUMINUM
②	8'-0" x 12'-0" VERTICAL LIFT, OVERHEAD (U-0.21 INSULATION)	8'-0" x 12'-0"	B	STEEL

**DOOR SCHEDULE NOTES:**

1. ALL PERSONNEL DOOR HARDWARE TO BE A.D.A. COMPLIANT WITH LEVER TYPE HANDLES.
2. COORDINATE ALL PERIMETER DOOR LOCATIONS WITH THE METAL BUILDING SUPPLIER.

**GRAPHIC SCALE:**



**FLOOR PLAN**

SCALE: 1/4" = 1'-0"