



**CUSHMAN &
WAKEFIELD**



FOR LEASE
AIRPORT
BUSINESS PARK
176 NORTH 2200 WEST
SALT LAKE CITY, UT

Mike Richmond

Executive Managing Director
+1 801 303 5434
mike.richmond@cushwake.com

Dana Baird, CCIM

Executive Managing Director
+1 801 303 5526
dana.baird@cushwake.com

Hannah King

Associate
+1 801 303 5440
hannah.king1@cushwake.com



Salt Lake City International Airport (SLC) is in the final stages of its massive rebuild ("The New SLC"), with the main focus now on Phase 4 of Concourse B, adding 16 gates and more shops/restaurants, with partial openings in Fall 2025 (5 gates/concessions) and the final 11 gates/concessions opening in Fall 2026, completing the \$5.1 billion project (Photo Credit: Salt Lake City International Airport)

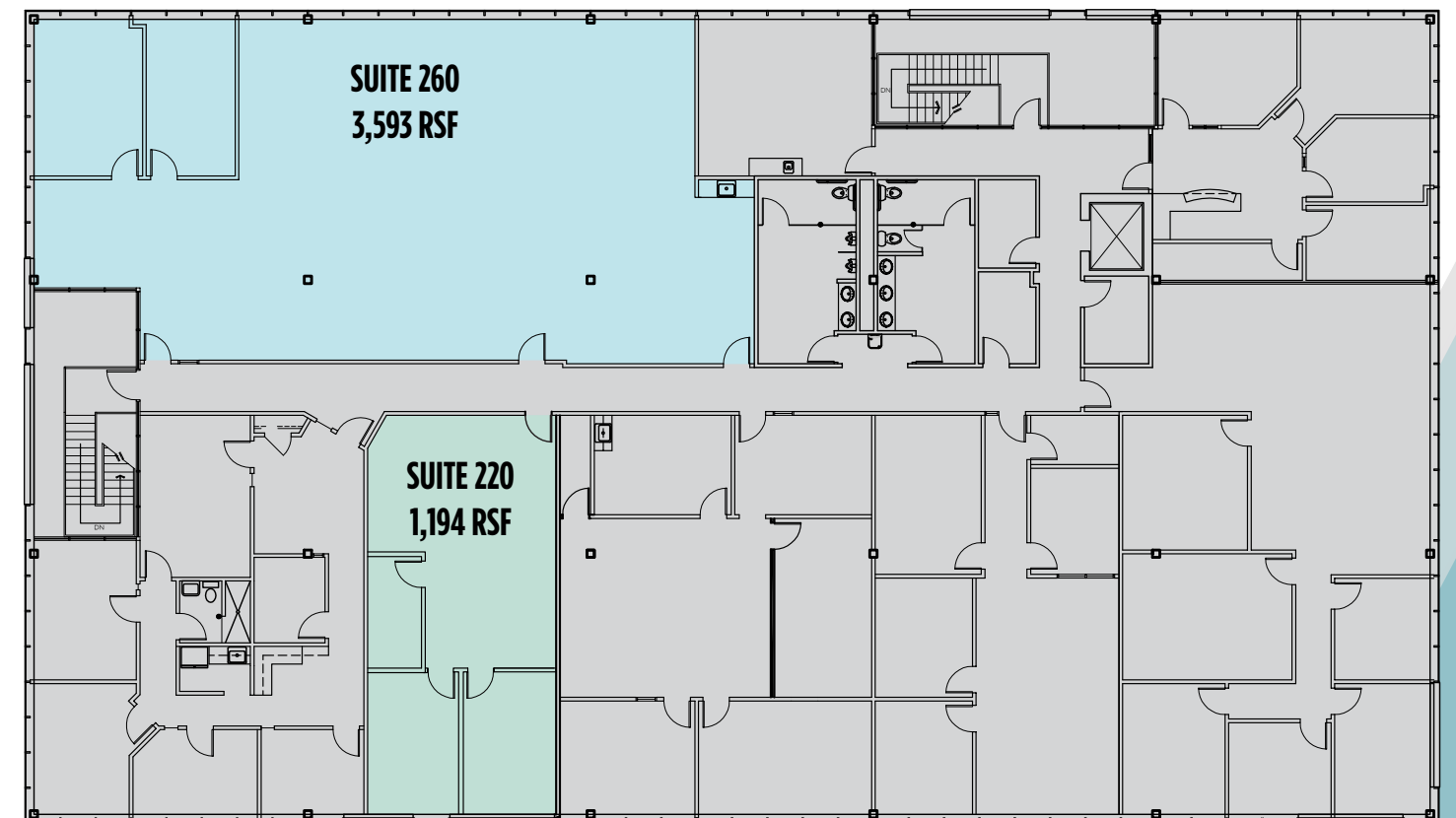


**176 NORTH 2200 WEST
SALT LAKE CITY, UT**

FIRST FLOOR



SECOND FLOOR



PROPERTY HIGHLIGHTS

- **Available:**
 - Suite 100: 6,105 RSF**
 - Suite 150: 3,489 RSF**
 - Suite 220: 1,194 RSF**
 - Suite 260: 3,593 RSF**
- Lease Rate: \$12.20 NNN
Opex=\$8.00
- Parking Ratio: 2.89/1,000
- Immediate Access to I-215 and I-80
- Nearby TRAX stop with direct access to Salt Lake City International Airport
- Approx. 5 minutes walking distance to nearest TRAX Stop
- Within minutes of numerous restaurants, lodging and airport
- Building signage available



FOR LEASE

AIRPORT BUSINESS PARK

176 NORTH 2200 WEST • SALT LAKE CITY, UT



Contact

Mike Richmond

Executive Managing Director
+1 801 303 5434
mike.richmond@cushwake.com

Dana Baird, CCIM

Executive Managing Director
+1 801 303 5526
dana.baird@cushwake.com

Hannah King

Associate
+1 801 303 5440
hannah.king1@cushwake.com

170 South Main Street, Suite 1600 • Salt Lake City, Utah / +1 801 322 2000 • cushmanwakefield.com

©2024 Cushman & Wakefield. All rights reserved. The information contained in this communication is strictly confidential. This information has been obtained from sources believed to be reliable but has not been verified. NO WARRANTY OR REPRESENTATION, EXPRESS OR IMPLIED, IS MADE AS TO THE CONDITION OF THE PROPERTY (OR PROPERTIES) REFERENCED HEREIN OR AS TO THE ACCURACY OR COMPLETENESS OF THE INFORMATION CONTAINED HEREIN, AND SAME IS SUBMITTED SUBJECT TO ERRORS, OMISSIONS, CHANGE OF PRICE, RENTAL OR OTHER CONDITIONS, WITHDRAWAL WITHOUT NOTICE, AND TO ANY SPECIAL LISTING CONDITIONS IMPOSED BY THE PROPERTY OWNER(S). ANY PROJECTIONS, OPINIONS OR ESTIMATES ARE SUBJECT TO UNCERTAINTY AND DO NOT SIGNIFY CURRENT OR FUTURE PROPERTY PERFORMANCE.