



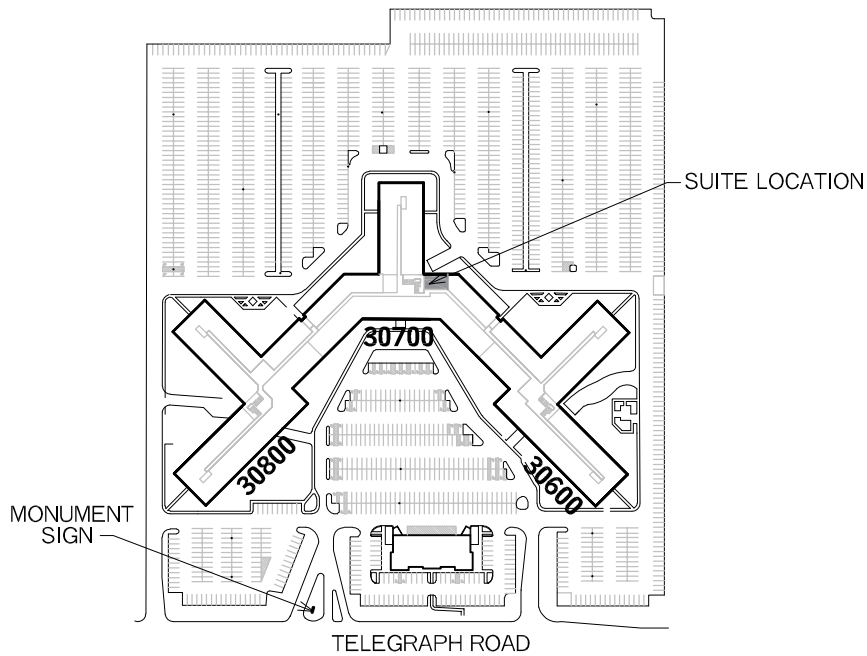
BINGHAM OFFICE CENTER

BINGHAM FARMS, MI 48025

CONTACT:

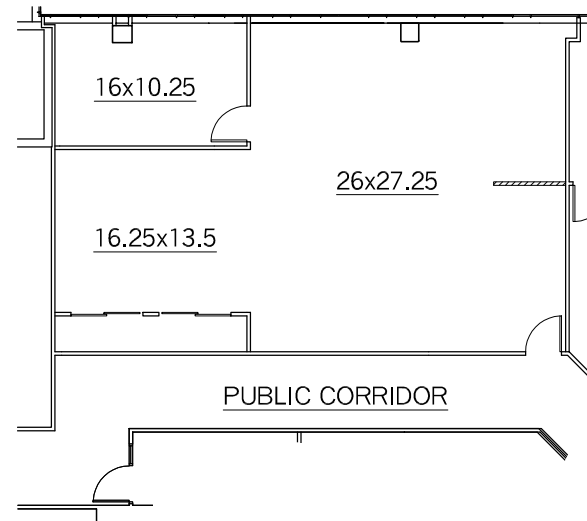
SHEILA FOGARTY (248) 686-5982

- * Newly renovated complex
- * 24 hour security system
- * After hours security guard on site
- * Cafe, Sundry shop and ATM
- * Professional on site management and maintenance
- * Efficient energy management system
- * Ample parking
- * Easy access to all major thorough fares



KEY PLAN

NO SCALE



SUITE 2420

1,317 R.S.F.

SCALE: 1/16 = 1'-0"

NOTE: ALL ROOM SIZES ARE APPROXIMATE

NAI Farbman

Commercial Real Estate Services, Worldwide.