
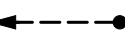
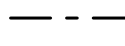






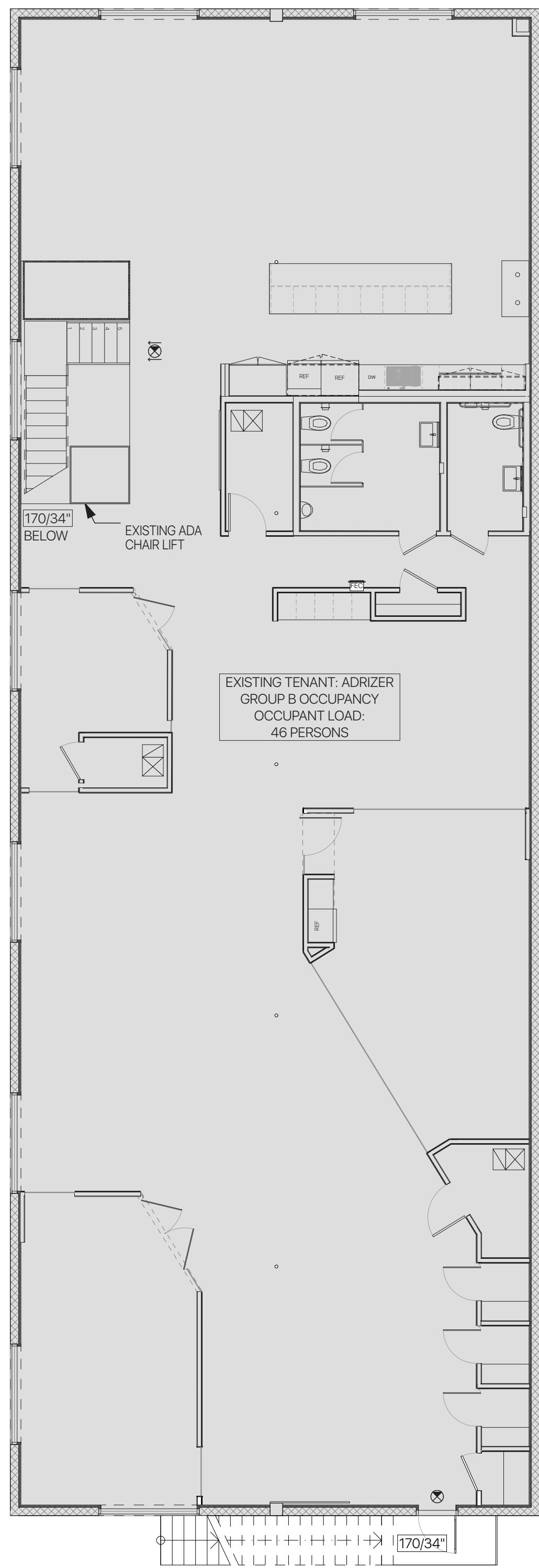


LIFE SAFETY LEGEND

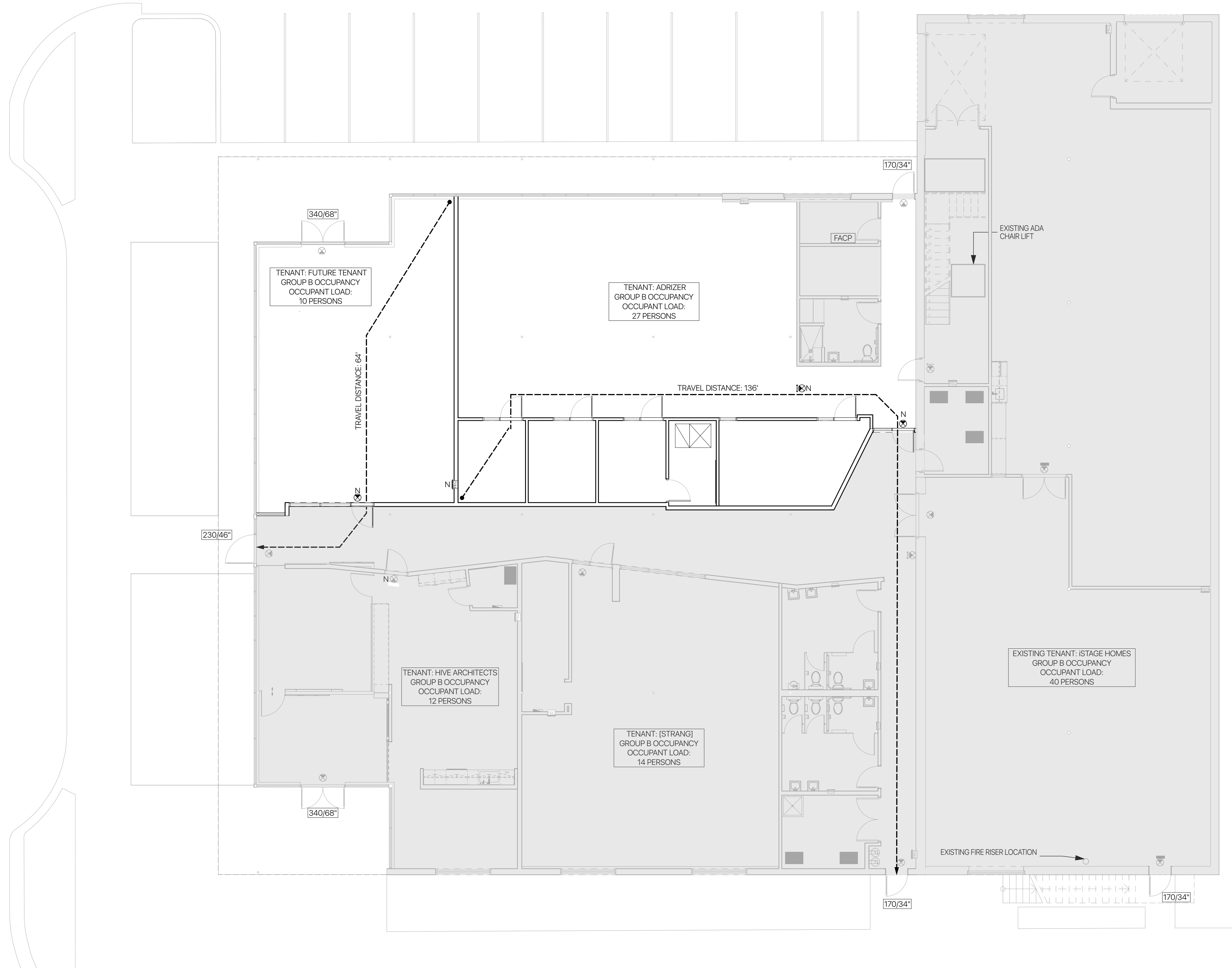
-  FIRE ALARM CONTROL PANEL
-  GRAPHIC ILLUSTRATION OF TRAVEL DISTANCE TO EXIT FROM REMOTE POINT
-  1HR FIRE RATED WALL ASSEMBLY
-  WALL HUNG FIRE EXTINGUISHER
-  SEMI-RECESSED FIRE EXTINGUISHER CABINET
-  NEW LIGHTED EXIT SIGN, LITHUANIA EDG WITH GREEN LETTERS. REFER TO ELECTRICAL. GC TO COORDINATE MOUNTING HEIGHT OF NEW EXIT SIGNS WITH ARCHITECT PRIOR TO INSTALLATION
-  EXISTING LIGHTED EXIT SIGN, LITHUANIA EDG WITH GREEN LETTERS. REFER TO ELECTRICAL
-  EXIT EGRESS CAPACITY: XX'XX"-INCHES OF CLEAR EXIT WITH / EGRESS CAPACITY IN NUMBER OF PERSONS
-  GREY AREAS REPRESENT EXISTING CONDITIONS (NO NEW WORK IN THESE AREAS)

GENERAL NOTES

1. BUILDING TO BE FULLY SPRINKLERED. GC AND SUB TO PROVIDE SIGNED AND SEALED SHOP DRAWINGS FOR FIRE PROTECTION SPRINKLER SYSTEM DESIGN FOR ARCHITECT REVIEW AND APPROVAL PRIOR TO INSTALLATION
2. REFER TO ELECTRICAL FOR ADDITIONAL LIFE SAFETY DEVICES
3. FIRE EXTINGUISHERS:
MP SERIES-MULTI-PURPOSE DRY CHEMICAL
THESE UNITS CONTAIN SPECIALLY FLUIDIZED AND SILICONIZED MONO AMMONIUM PHOSPHATE POWDER WHICH SMOTHERS AND BREAKS THE CHAIN REACTION ON CLASS B FIRES, FUSES AND INSULATED CLASS A FIRE, AND AS A NON-CONDUCTOR OF ELECTRICITY, IS EFFECTIVE ON CLASS C FIRES.
4. SEMI-RECESSED FIRE EXTINGUISHER CABINETS:
PROVIDE STEEL HEAVY GAUGE, WHITE BAKED ENAMEL BOX WITH FULL 1/2" THICK HOLLOW METAL HEAVY GAUGE DOOR, TRIM AND DOORS TO BE ONE PIECE CONSTRUCTION WITH SATIN FINISH PULL HANDLE, CONTINUOUS MATCHING HINGE, AND SELF-ADJUSTING ROLLER CATCH. DOOR TO HAVE VERTICAL CLEAR ACRYLIC WINDOW, TRIM TO HAVE A 2 1/2" ROLLED EDGE.



SECOND FL LIFE SAFETY PLAN - ADRIZER (EXISTING) 2
A1.1.1
SCALE: 1/8" = 1'-0"



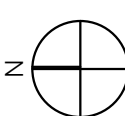
GROUND FL LIFE SAETY PLAN - ADRIZED AND FUTURE TENANT 1
A1.1.1
SCALE: 1/8" = 1'-0"

hivearchitects
1570 Blvd. of the Arts, Suite 110 941.951.6191
Sarasota, FL 34236 www.hivearchitects.com

BOTA Center - Build-out for AdRizer
1570 Boulevard of The Arts, Sarasota, FL 34236

Revision	Date	Description

LIFE SAFETY PLAN



00.0019
Joseph A Kelly, AIA

18005

A1.1.1

05.31.19