

PAD SITES FOR SALE & MEDICAL/OFFICE/RETAIL SPACE AVAILABLE

CALL FOR PRICING



Zoning: Front Pads on Erby Campbell Blvd (east side of the property and stops about half way mark of Walmart for reference) is zoned C-1 and the west portion is C-2 zoning.

18.26 AC (Pad site sizes may vary)

Corner of Erby Campbell and Mercantile Blvd. -- NW I-30 and Erby Campbell

Michael Berkowitz
 (817) 632-6215 Direct
 mberkowitz@colonialcre.com

COLONIAL
 COMMERCIAL REAL ESTATE LLC

Benjamin Berkowitz
 (817) 889-1829 Cell
 bberkowitz@colonialcre.com

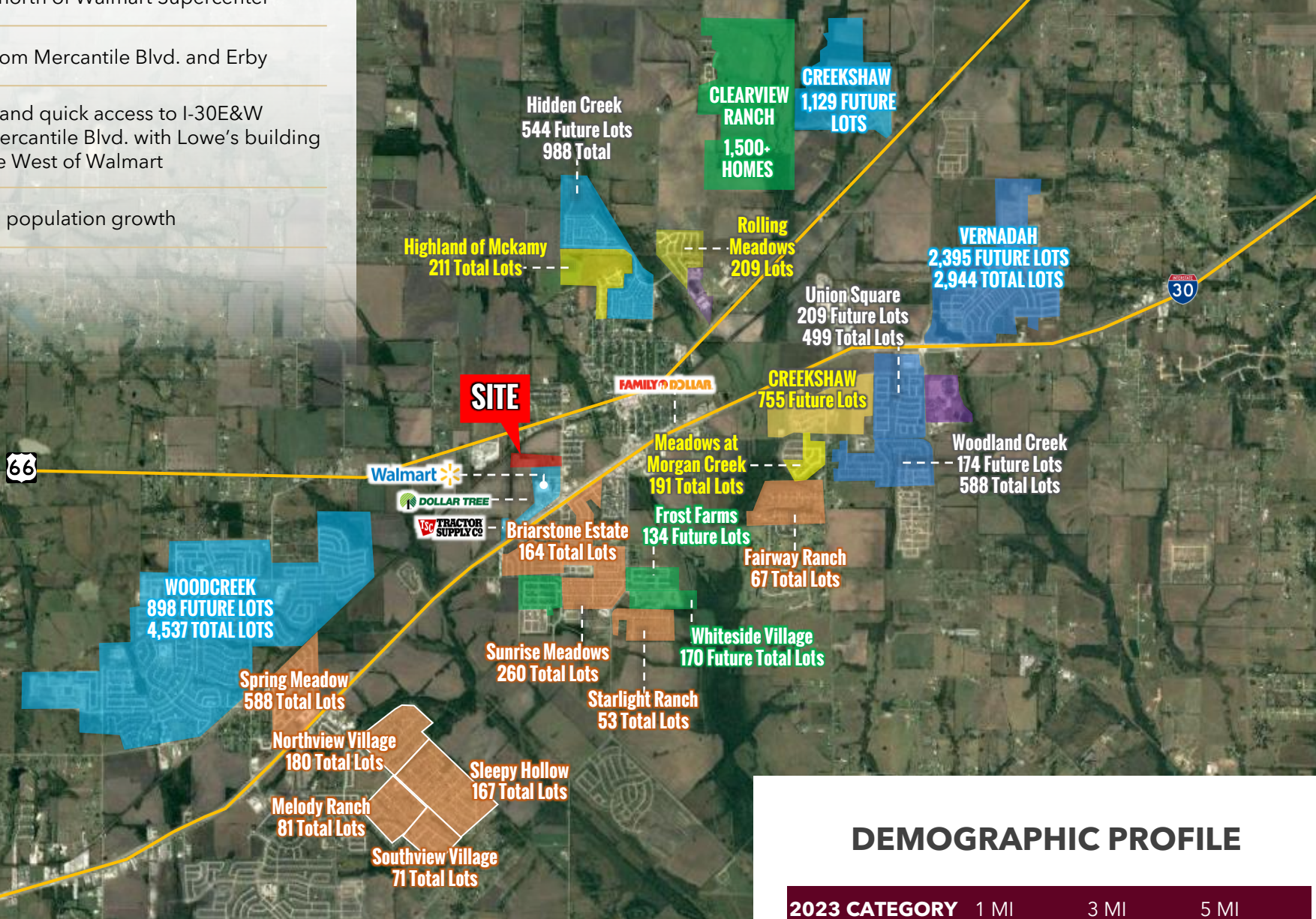
HIGHLIGHTS

Located directly north of Walmart Supercenter

Ease of access from Mercantile Blvd. and Erby

Campbell Blvd. and quick access to I-30E&W
 Future expansion of Mercantile Blvd. with Lowe's building to the West of Walmart

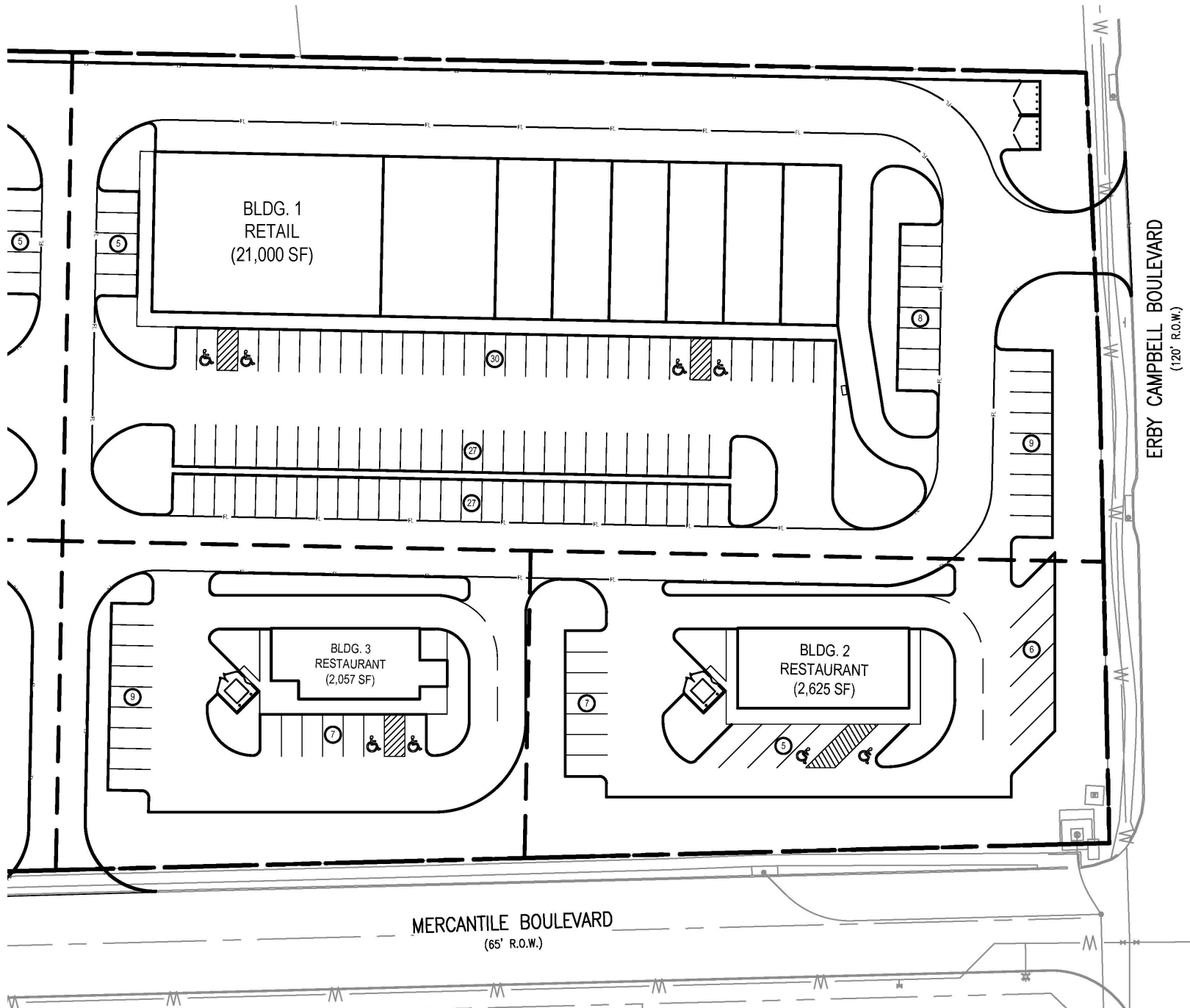
Strong population growth



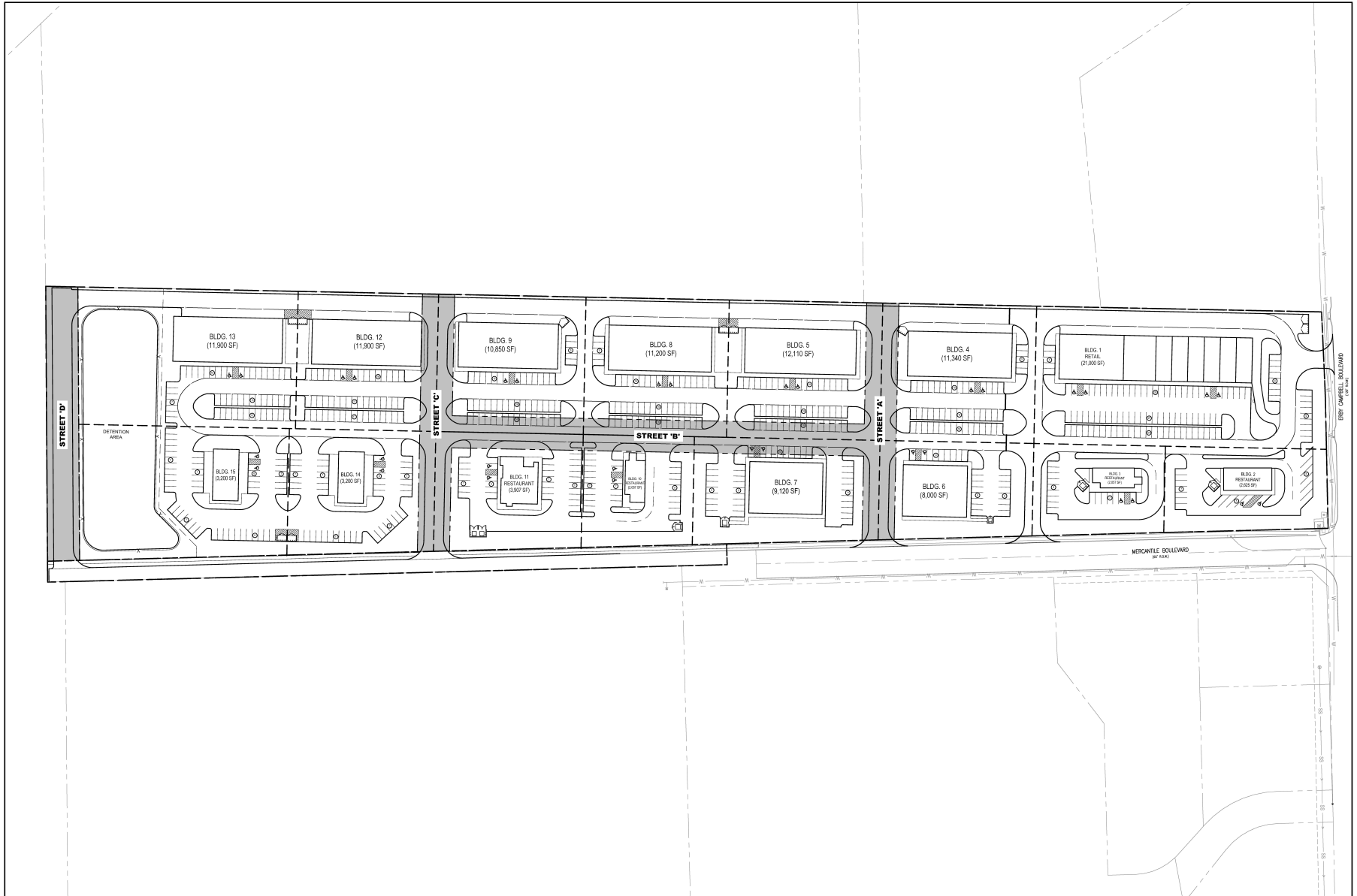
DEMOGRAPHIC PROFILE

2023 CATEGORY	1 MI	3 MI	5 MI
Population	10,148	32,348	49,112
Households	3,413	10,754	16,263
Avg HH Income	\$100,587	\$112,889	\$114,791

PHASE 1 Site Plan



Full Site Plan



PAD SITES FOR SALE & MEDICAL/OFFICE/RETAIL SPACE AVAILABLE

Corner of Erby Campbell and Mercantile Blvd. -- NW I-30 and Erby Campbell

Michael Berkowitz

(817) 632-6215 Direct

mberkowitz@colonialcre.com

COLONIAL
COMMERCIAL REAL ESTATE LLC

Benjamin Berkowitz

(817) 889-1829 Cell

bberkowitz@colonialcre.com

The information contained in the following Offering Memorandum is proprietary and strictly confidential. It is intended to be reviewed only by the party receiving it from Colonial Commercial Real Estate LLC and it should not be made available to any other person or entity without the written consent of Colonial Commercial Real Estate LLC. By taking possession of and reviewing the information contained herein the recipient agrees to hold and treat all such information in the strictest confidence. The recipient further agrees that recipient will not photocopy or duplicate any part of the Offering Memorandum. If you have no interest in the subject property at this time, please return this Offering Memorandum to Colonial Commercial Real Estate LLC.

This Offering Memorandum has been prepared to provide summary, unverified financial and physical information to prospective purchasers, and to establish only a preliminary level of interest in the subject property. The information contained herein is not a substitute for a thorough due diligence investigation. Colonial Commercial Real Estate LLC has not made any investigation, and makes no warranty or representation with respect to the income or expenses for the subject property, the future projected financial performance of the property, the size and square footage of the property and improvements, the presence or absence of contaminating substances, PCBs or asbestos, the compliance with local, state and federal regulations, the physical condition of the improvements thereon, or the financial condition or business prospects of any tenant, or any tenant's plans or intentions to continue its occupancy of the subject property. The information contained in this Offering Memorandum has been obtained from sources we believe to be reliable; however, Colonial Commercial Real Estate LLC has not verified, and will not verify, any of the information contained herein, nor has Colonial Commercial Real Estate LLC conducted any investigation regarding these matters and makes no warranty or representation whatsoever regarding the accuracy or completeness of the information provided.

All potential buyers must take appropriate measures to verify all of the information set forth herein. Prospective buyers shall be responsible for their costs and expenses of investigating the subject property. All potential buyers are strongly advised to take advantage of their opportunities and obligations to conduct thorough due diligence and seek expert opinions as they may deem necessary, especially given the unpredictable changes resulting from the continuing COVID-19 pandemic. Colonial Commercial Real Estate LLC has not been retained to perform, and cannot conduct, due diligence on behalf of any prospective purchaser. Colonial Commercial Real Estate LLC's principal expertise is in marketing investment properties and acting as intermediaries between buyers and sellers. Colonial Commercial Real Estate LLC and its investment professionals cannot and will not act as lawyers, accountants, contractors, or engineers. All potential buyers are admonished and advised to engage other professionals on legal issues, tax, regulatory, financial, and accounting matters, and for questions involving the property's physical condition or financial outlook. Projections and pro forma financial statements are not guarantees and, given the potential volatility created by COVID-19, all potential buyers should be comfortable with and rely solely on their own projections, analyses, and decision-making.)

Any rent or income information in this offering memorandum, with the exception of actual, historical rent collections, represent good faith projections of potential future rent only, and Colonial Commercial Real Estate LLC makes no representations as to whether such rent may actually be attainable. Local, state, and federal laws regarding restrictions on rent increases may make these projections impossible, and Buyer and its advisors should conduct their own investigation to determine whether such rent increases are legally permitted and reasonably attainable.