

FOR LEASE

FURNISHED MODERN OFFICES IN THE HEART OF WATERBURY VILLAGE

93 Pilgrim Park Road, Waterbury, Vermont



Located in the heart of bustling Waterbury, Pilgrim Park is the former home of Green Mountain Coffee and offers some of the nicest fully furnished office environment in the stated. There is an outstanding combination of open office space with exposed high ceilings, private meeting areas, incredible break rooms, tons of natural light, and more! These spaces must be seen to be appreciated! The property is easily accessible off Interstate 89 exit 10, and within easy walking distance to a revitalized Downtown which features craft breweries, eclectic restaurants, and abundant outdoor recreation opportunities. Close to Stowe, Sugarbush and Mad River ski areas.

SIZE:

34,000+ square feet; can be subdivided

PERMITTED USE:

Office and research & development

PRICE:

TBD

AVAILABLE:

Immediately

PARKING:

Ample on-site

LOCATION:

93 Pilgrim Park Road, Waterbury, VT

Information contained herein is believed to be accurate, but is not warranted. This is not a legally binding offer to sell or lease.



For more information, please contact:

TONY BLAKE

802-864-2000

tony.blake@vtcommercial.com

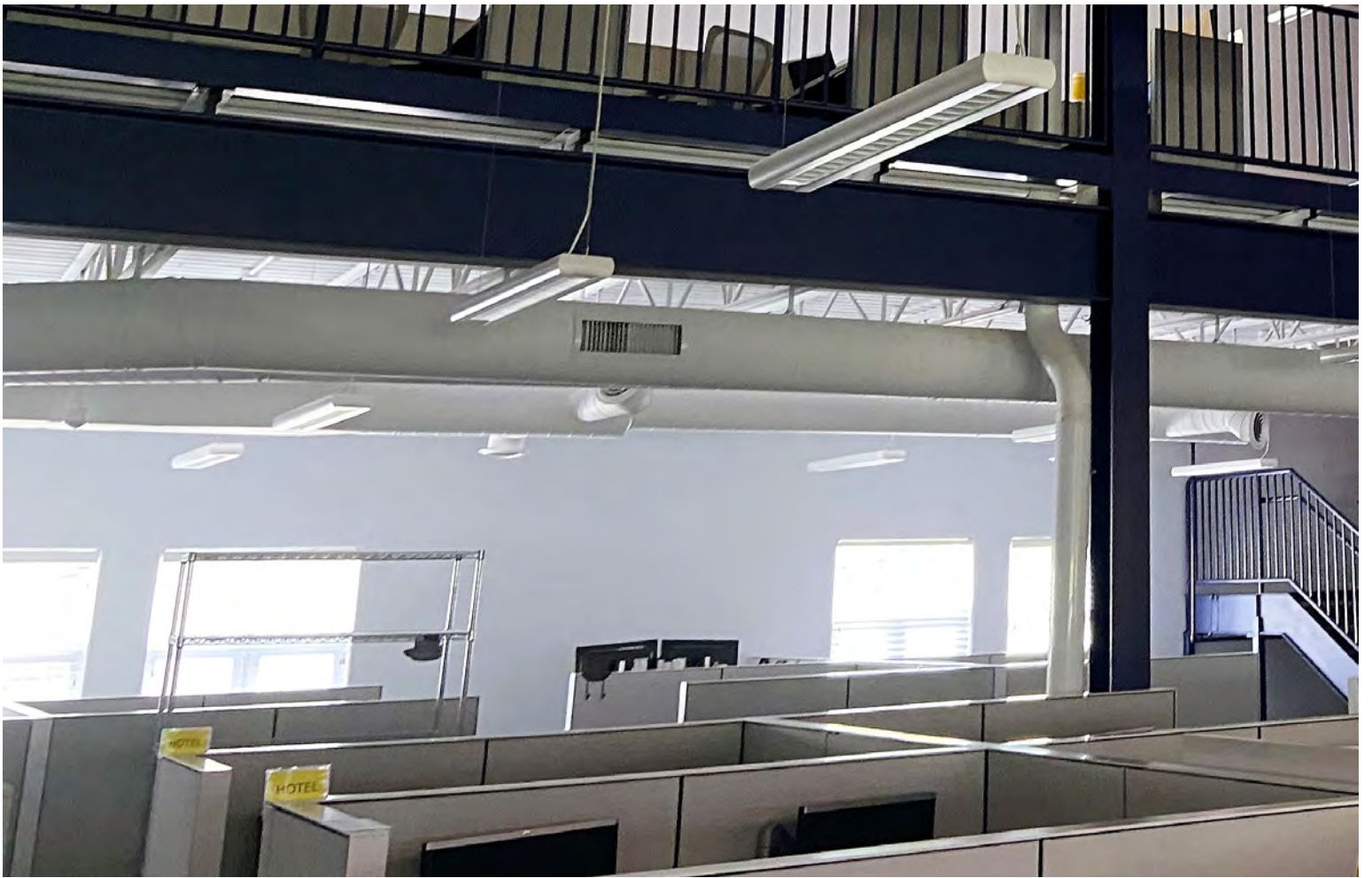
208 FLYNN AVENUE, SUITE 2i

BURLINGTON, VT 05401

www.vtcommercial.com







STOP ONLINE HEALTH SCREENING REQUIRED
After taking the online health screening at home, if you received:
Healthcare Provider Approval: **DO NOT ENTER FACILITY**
Facility Approval Received: **APPROVED TO ENTER. PRESENT GREEN SQUARE TO SECURITY.**

Please **do not** enter past the lobby unless you have spoken with facilities or Securitas.

Welcome to our Tobacco & Smoke-free Campus

 Keurig Dr Pepper

