

FOR SALE Proposed Mixed Use Project



853 Shell Beach Rd. & 118 Windward Ave. | Pismo Beach, CA

- Close proximity to the Pacific Ocean
- High visibility location
- Great opportunity for developers/investors
- Rare Shell Beach opportunity

Plans are conceptual only. List price includes conceptual plans but makes no guarantee of ability to build

Kristen Gentry

805.441.4618

Kristen@RichardsonProperties.com

Lic #01968754

Chris Richardson

805.441.4618

Chris@RichardsonProperties.com

Lic #01200458

Chris Garner

805.928.2800 ext. 104

CGarner@PacificaCRE.com

Lic #01010310



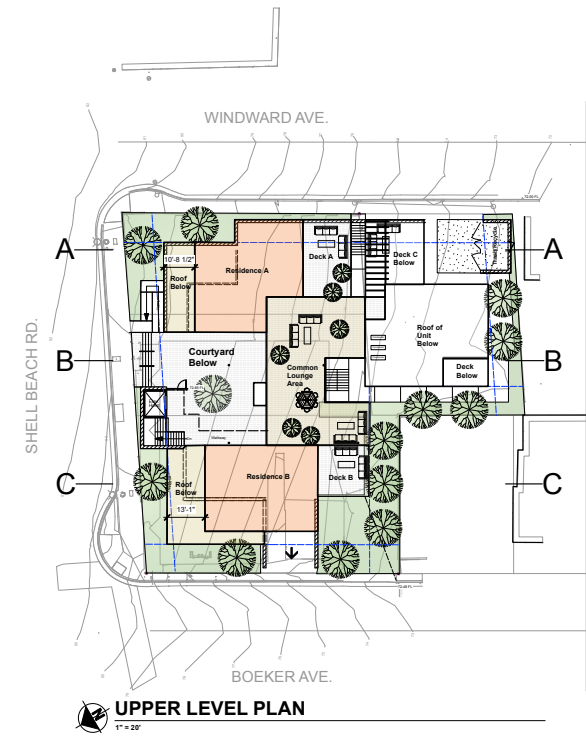
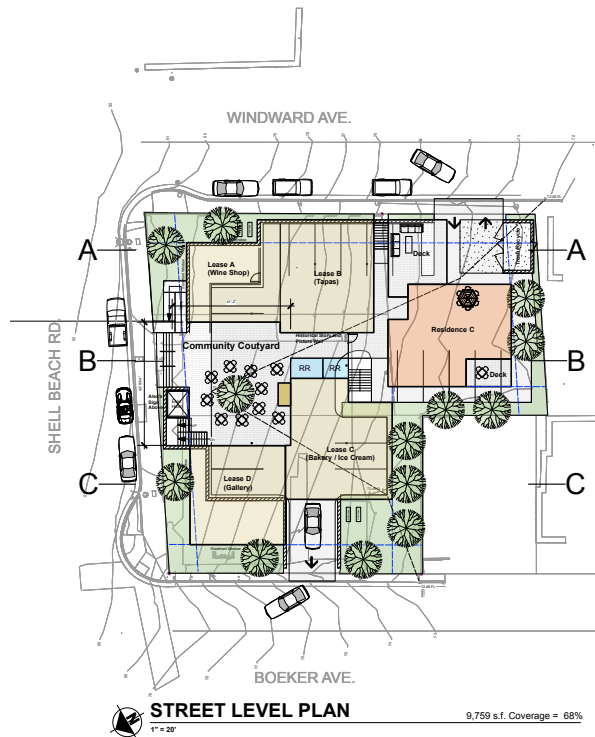
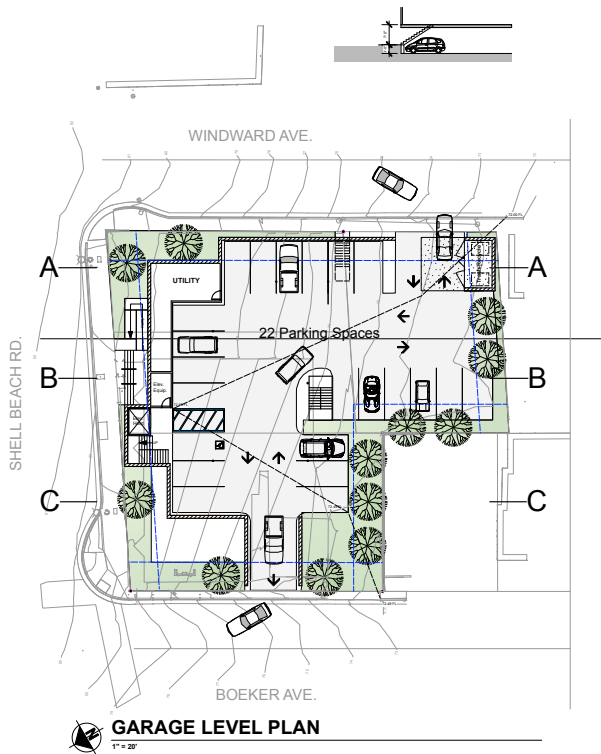
Pacifica Richardson
COMMERCIAL REALTY

Sotheby's
INTERNATIONAL REALTY

2520 Professional Parkway | Santa Maria, CA 93455 | PacificaCommercialRealty.com

Information contained herein has been obtained from the owner of the property or from other sources deemed reliable. We have no reason to doubt its accuracy, but we do not guarantee it.

FOR SALE 853 Shell Beach Rd. & 118 Windward Ave. | Pismo Beach, CA



Property Details

- List Price: \$2,100,000.00
- +/-14,380 square foot parcel
- Ideal Shell Beach location
- Proposed project includes 4,350 SF of ground floor commercial and 4,200 SF of 2nd floor residential

Plans are conceptual only. List price includes conceptual plans but makes no guarantee of ability to build

Kristen Gentry

805.441.4618

Kristen@RichardsonProperties.com

Lic #01968754

Chris Richardson

805.441.4618

Chris@RichardsonProperties.com

Lic #01200458

Chris Garner

805.928.2800 ext. 104

CGarner@PacificaCRE.com

Lic #01010310



2520 Professional Parkway | Santa Maria, CA 93455 | PacificaCommercialRealty.com

Information contained herein has been obtained from the owner of the property or from other sources deemed reliable. We have no reason to doubt its accuracy, but we do not guarantee it.

FOR SALE 853 Shell Beach Rd. & 118 Windward Ave. | Pismo Beach, CA



Kristen Gentry

805.441.4618

Kristen@RichardsonProperties.com

Lic #01968754

Chris Richardson

805.441.4618

Chris@RichardsonProperties.com

Lic #01200458

Chris Garner

805.928.2800 ext. 104

CGarner@PacificaCRE.com

Lic #01010310

Plans are conceptual only. List price includes conceptual plans but makes no guarantee of ability to build



Sotheby's
INTERNATIONAL REALTY

2520 Professional Parkway | Santa Maria, CA 93455 | PacificaCommercialRealty.com

Information contained herein has been obtained from the owner of the property or from other sources deemed reliable. We have no reason to doubt its accuracy, but we do not guarantee it.

FOR SALE 853 Shell Beach Rd. & 118 Windward Ave. | Pismo Beach, CA



Kristen Gentry

805.441.4618

Kristen@RichardsonProperties.com

Lic #01968754

Chris Richardson

805.441.4618

Chris@RichardsonProperties.com

Lic #01200458

Chris Garner

805.928.2800 ext. 104

CGarner@PacificaCRE.com

Lic #01010310

Plans are conceptual only. List price includes conceptual plans but makes no guarantee of ability to build



Pacifica Richardson
COMMERCIAL REALTY

Sotheby's
INTERNATIONAL REALTY

2520 Professional Parkway | Santa Maria, CA 93455 | PacificaCommercialRealty.com

Information contained herein has been obtained from the owner of the property or from other sources deemed reliable. We have no reason to doubt its accuracy, but we do not guarantee it.

FOR SALE 853 Shell Beach Rd. & 118 Windward Ave. | Pismo Beach, CA



Kristen Gentry

805.441.4618

Kristen@RichardsonProperties.com

Lic #01968754

Chris Richardson

805.441.4618

Chris@RichardsonProperties.com

Lic #01200458

Chris Garner

805.928.2800 ext. 104

CGarner@PacificaCRE.com

Lic #01010310

Plans are conceptual only. List price includes conceptual plans but makes no guarantee of ability to build



Pacifica Richardson
COMMERCIAL REALTY

Sotheby's
INTERNATIONAL REALTY

2520 Professional Parkway | Santa Maria, CA 93455 | PacificaCommercialRealty.com

Information contained herein has been obtained from the owner of the property or from other sources deemed reliable. We have no reason to doubt its accuracy, but we do not guarantee it.