



**GENESEE**  
COMMERCIAL  
GROUP, LLC

# FOR LEASE

## OFFICE

### 32045 CASTLE COURT Evergreen, Colorado 80439



#### PROPERTY FEATURES

- Class A building in Evergreen
- Entire second floor of 13,636 RSF is available
- Walking distance to restaurants
- Beautiful lake and mountain views
- One to five year Lease Terms
- Local Ownership

#### BUILDING SPECIFICATIONS

Available:	Suite 50	5,936 RSF
	Suite 101	2,052 RSF
	Suite 200	4,103 RSF
	Suite 202	5,208 RSF
	Suite 200/202	9,311 RSF
	Suite 201	2,012 RSF
	Suite 203	1,793 RSF
	Suite 201/203	4,325 RSF
Lease Rate:	\$11.50-\$14.00/RSF NNN	
NNN Expenses:	\$10.37/RSF	
Building Size:	36,000	
Year Built:	2000	

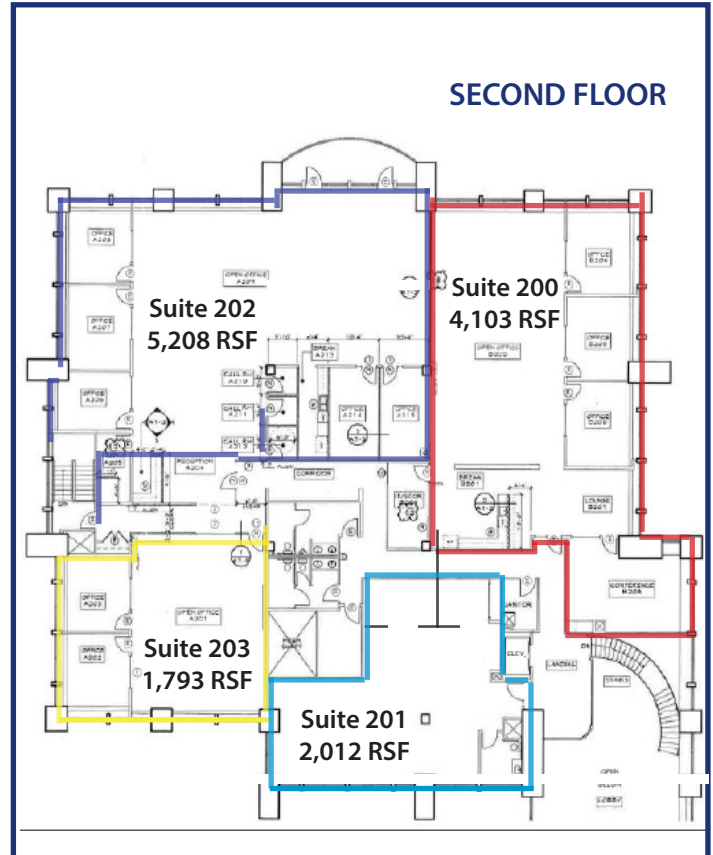
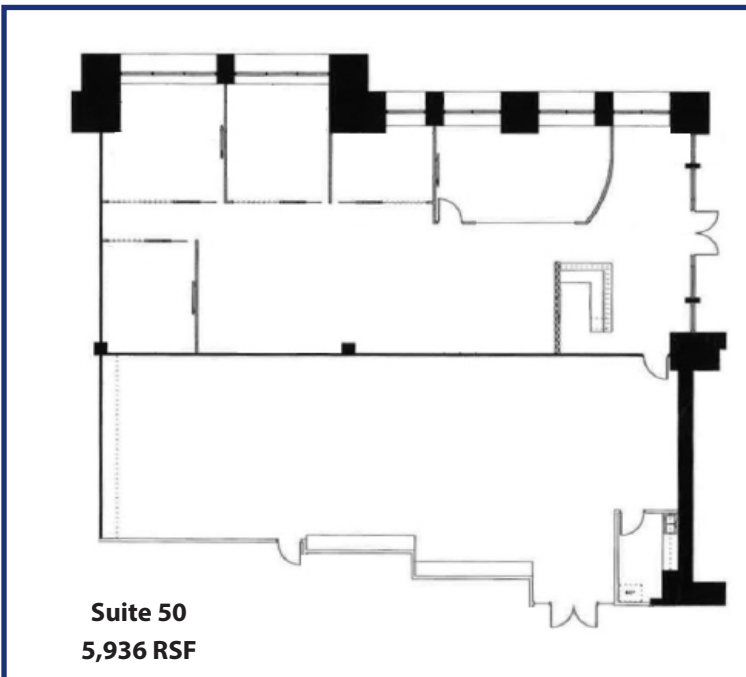
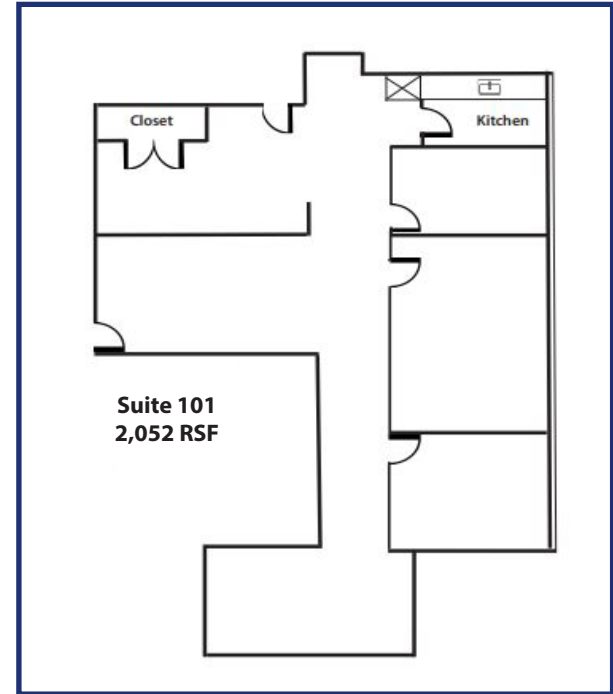
#### FOR MORE INFORMATION CONTACT:

**RENÉE SPICER**

[rspicer@gcgcre.com](mailto:rspicer@gcgcre.com) | 720.476.5226

**JAMIE MACBETH**

[jmacbeth@gcgcre.com](mailto:jmacbeth@gcgcre.com) | 720.476.5229



No warranty or representation is made as to the accuracy of the foregoing information. Terms of sale or lease and availability are subject to change or withdrawal without notice.

**FOR MORE INFORMATION CONTACT:**

**RENÉE SPICER**

rspicer@gcgcre.com | 720.476.5226

**JAMIE MACBETH**

jmacbeth@gcgcre.com | 720.476.5229