



4720 BOSTON WAY

LANHAM, MARYLAND 20706

FOR
SUBLEASE



MACKENZIE

COMMERCIAL REAL ESTATE SERVICES, LLC

PROPERTY OVERVIEW

HIGHLIGHTS:

- Sublease thru 2/29/2028
- Open office layout
- Heavy Power
- Located near the intersection of I-495 and Rt. 50 in Prince George's County

AVAILABLE:

12,016 SF ±

YEAR BUILT:

1979

CLEAR HEIGHT:

16'-18'

LOADING:

2 DOCKS

PARKING:

3.38/1,000 SF

ZONING:

IH

RENTAL RATE:

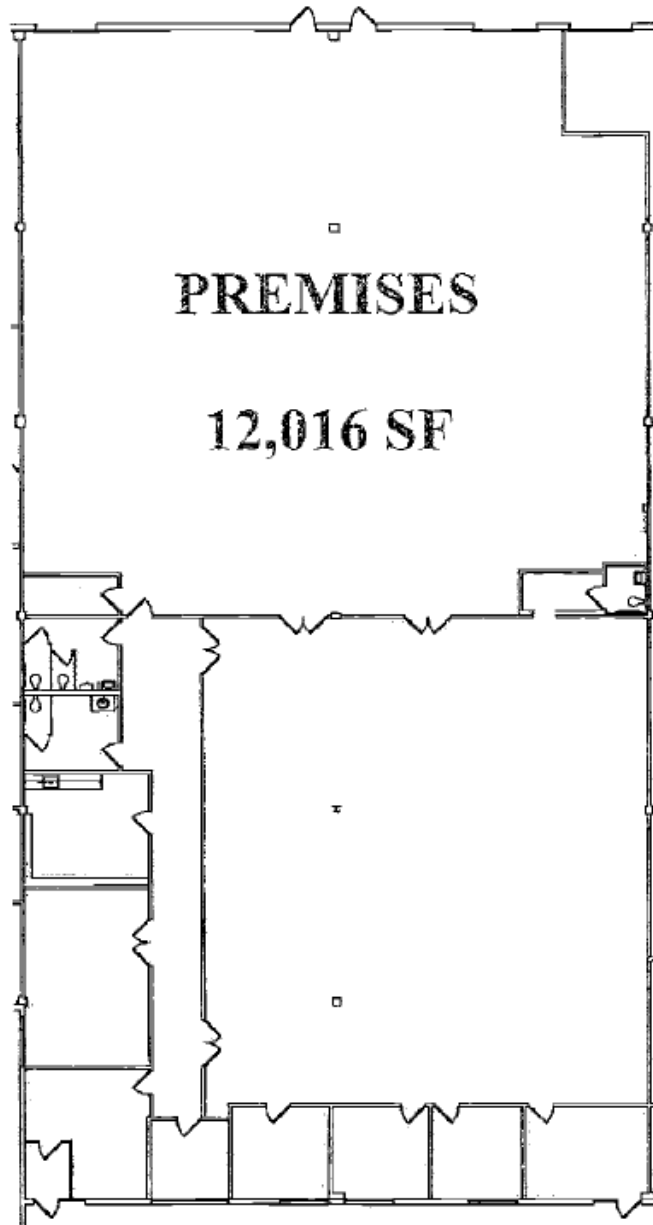
NEGOTIABLE



GOOGLE STREET VIEW

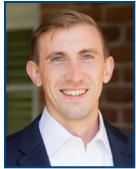


FLOOR PLAN



This aerial map illustrates the location of the 'SITE' (marked with a red pin) in the Washington, D.C. area. The map highlights several key industrial and commercial zones, including the Glenridge Shopping Center, Metro East Business Community, Ardmore Industrial Park, Washington Commerce Center, Maryland 50 Industrial Park, Woodmore Town Centre, and Inglewood Business Community. Major transportation corridors are shown, including Interstate 95 (I-95), Interstate 495 (I-495), and Interstate 50 (I-50). A scale bar indicates a distance of 3 miles.

FOR MORE INFO **CONTACT:**



OLIVER FRYER

VICE PRESIDENT

443.597.5711

OFRYER@mackenziecommercial.com



BRYAN HERR

VICE PRESIDENT

443.875.7505

BHERR@mackenziecommercial.com



MACKENZIE

COMMERCIAL REAL ESTATE SERVICES, LLC

410-974-9336

410 Severn Avenue

Annapolis, MD 21403

OFFICES IN: **ANNAPOLIS, MD** BALTIMORE, MD BEL AIR, MD COLUMBIA, MD LUTHERVILLE, MD CHARLOTTESVILLE, VA

www.MACKENZIECOMMERCIAL.com



VISIT **PROPERTY PAGE** FOR MORE INFORMATION.

No warranty or representation, expressed or implied, is made as to the accuracy of the information contained herein, and same is submitted subject to errors, omissions, change of price, rental or other conditions, withdrawal without notice, and to any specific listing conditions imposed by our principals.