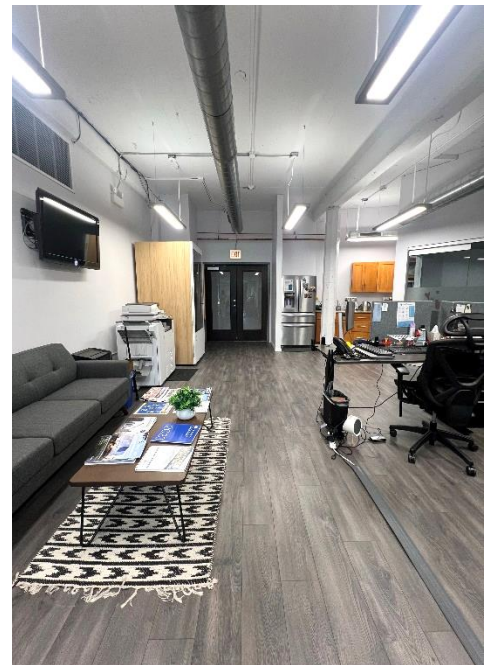
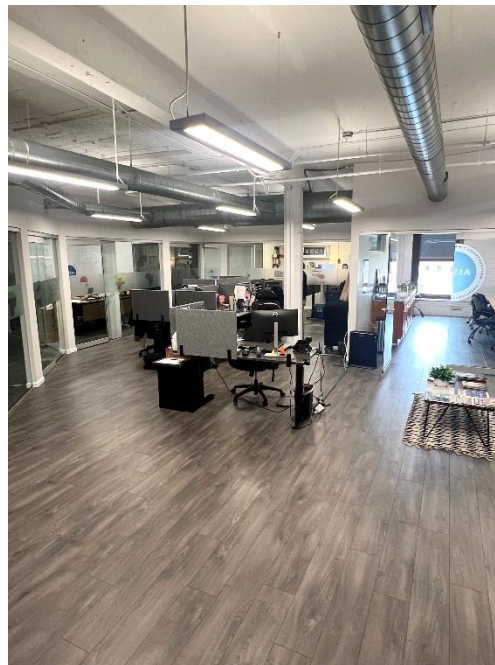
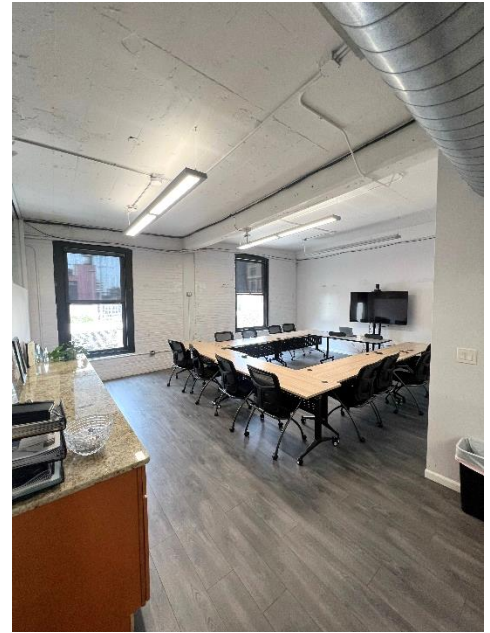
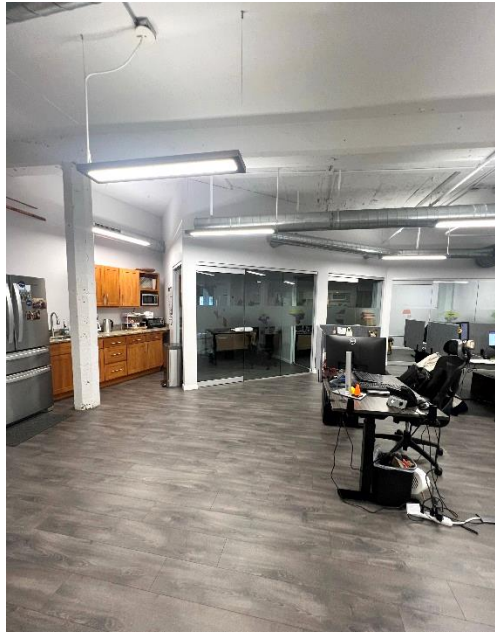
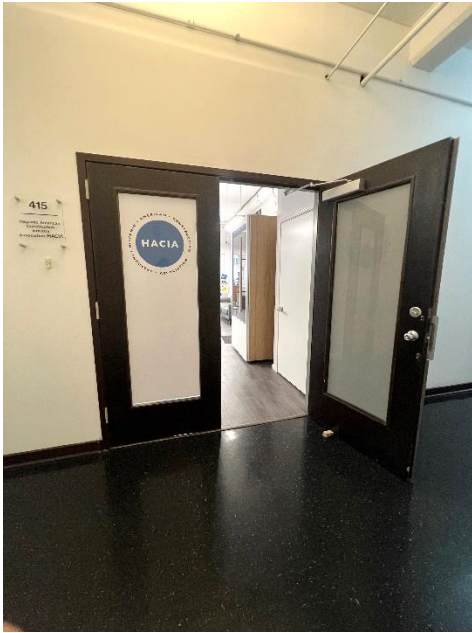


1,900 SF
AVAILABLE FOR SUBLEASE

650 W Lake St
CHICAGO, IL

SPACE PHOTOS



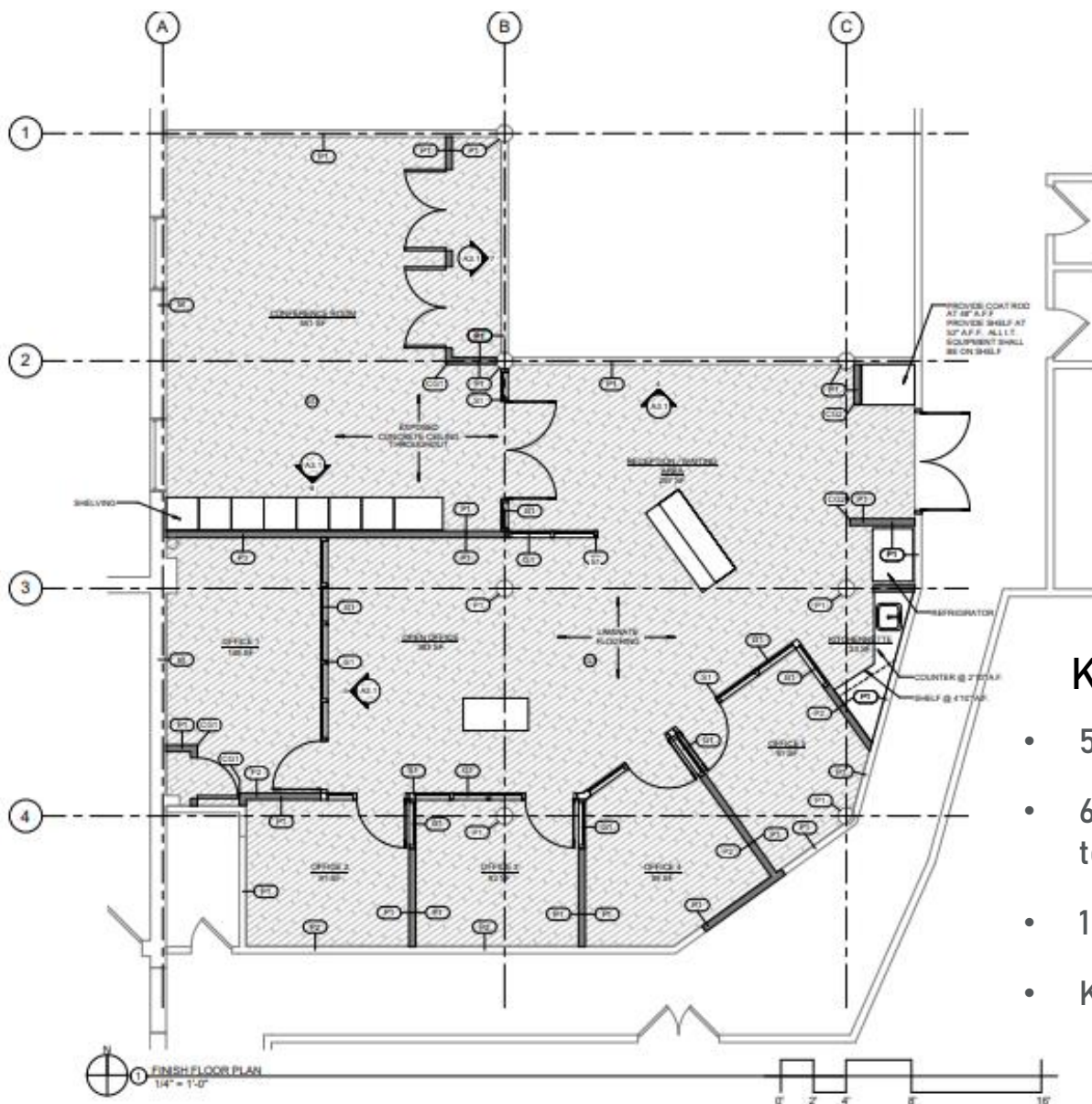
1,900 sf of loft space available for sublease

SPACE HIGHLIGHTS

4TH FLOOR

1,900 SF Available
Sublease Expires 8/31/2031
Asking \$22.00/SF Gross

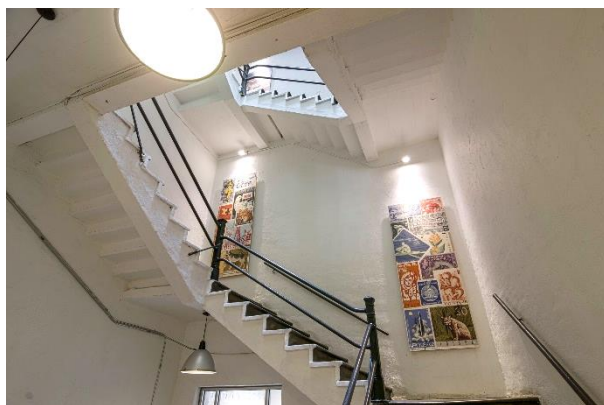
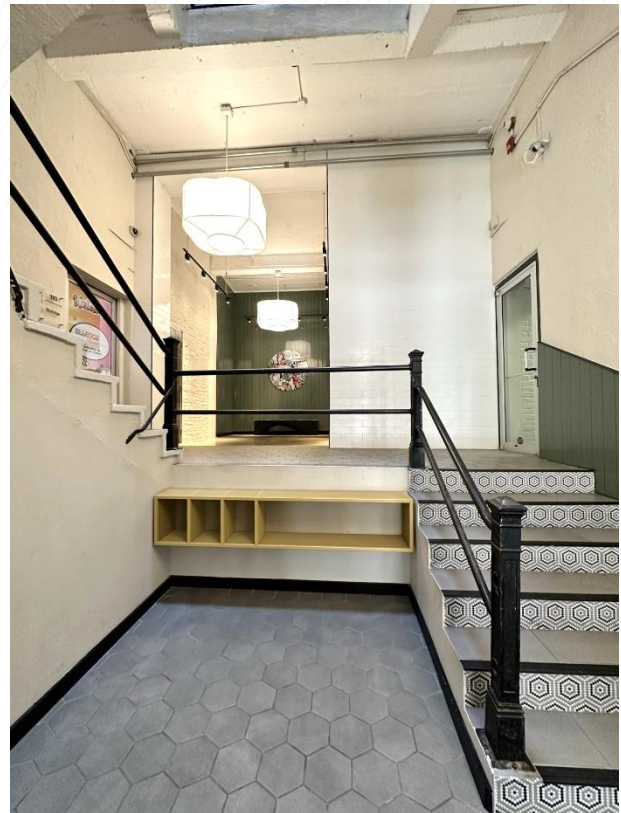
FLOOR PLAN



Key Features:

- 5 private offices
- 6 workstations with room to add more
- 1 large conference room
- Kitchenette

BUILDING PHOTOS



©2024 Cushman & Wakefield. All rights reserved. The information contained in this communication is strictly confidential. This information has been obtained from sources believed to be reliable but has not been verified. NO WARRANTY OR REPRESENTATION, EXPRESS OR IMPLIED, IS MADE AS TO THE CONDITION OF THE PROPERTY (OR PROPERTIES) REFERENCED HEREIN OR AS TO THE ACCURACY OR COMPLETENESS OF THE INFORMATION CONTAINED HEREIN, AND SAME IS SUBMITTED SUBJECT TO ERRORS, OMISSIONS, CHANGE OF PRICE, RENTAL OR OTHER CONDITIONS, WITHDRAWAL WITHOUT NOTICE, AND TO ANY SPECIAL LISTING CONDITIONS IMPOSED BY THE PROPERTY OWNER(S). ANY PROJECTIONS, OPINIONS OR ESTIMATES ARE SUBJECT TO UNCERTAINTY AND DO NOT SIGNIFY CURRENT OR FUTURE PROPERTY PERFORMANCE.

Max Nachemson

+1 312 424 8109

max.nachemson@cushwake.com

Eric Sorensen

+1 312 470 2315

eric.sorensen@cushwake.com



**CUSHMAN &
WAKEFIELD**