

Retail | For Lease

CBRE

Highland Quarters

At Indiana State University Campus

649 Cherry Street, Terre Haute, IN 47809

4,582 SF Available And Can Demise Smaller Spaces



Highland Quarters

649 Cherry Street | Terre Haute, IN 47809

For Lease

4,582

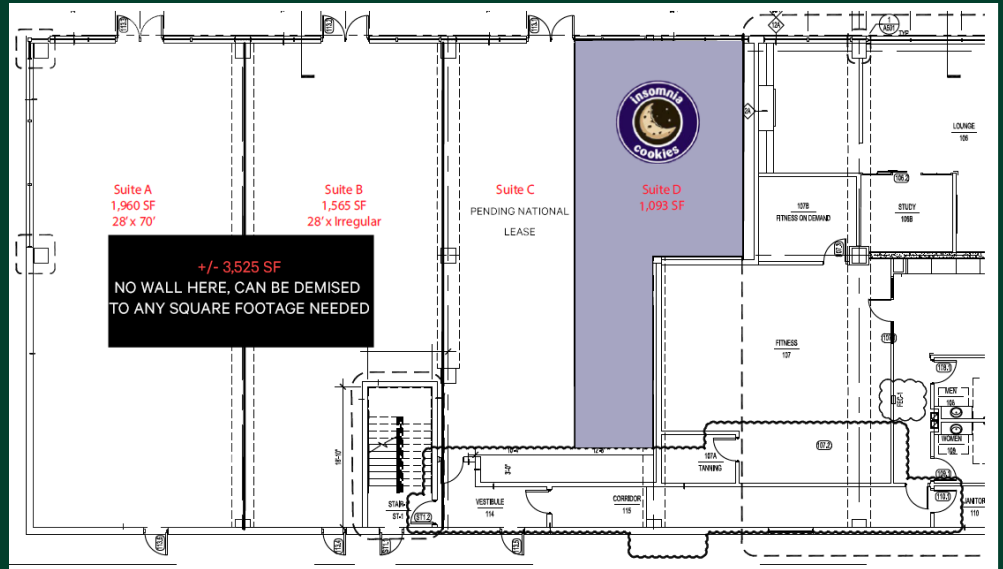
Max available SF

71/100

Walkability on Cherry St

2017

Year Built



Property Information

Property Highlights:

- + 1,072 – 4,582 SF Available
- + First floor retail with 224 bed luxury student apartments
- + Onsite parking available
- + Immediately adjacent to the Scott Business School and ISU campus (+15,000 students)
- + Access to US 41 via Cherry St
- + Very walkable downtown/campus – 71/100 walkability score

Video Walkthrough

Click here or scan with a smartphone camera to watch a walk-through of the space



www.cbre.com/INDY

Market Demographics

	1-Mile Radius	3-Mile Radius	5-Mile Radius
Population	11,943	52,299	73,969
Households	3,891	20,839	28,701
Daytime Population	16,608	60,317	85,578

Source: FastReport2 2022

Traffic Count

	Vehicles Per Day
US 41	29,706
Cherry St.	5,859

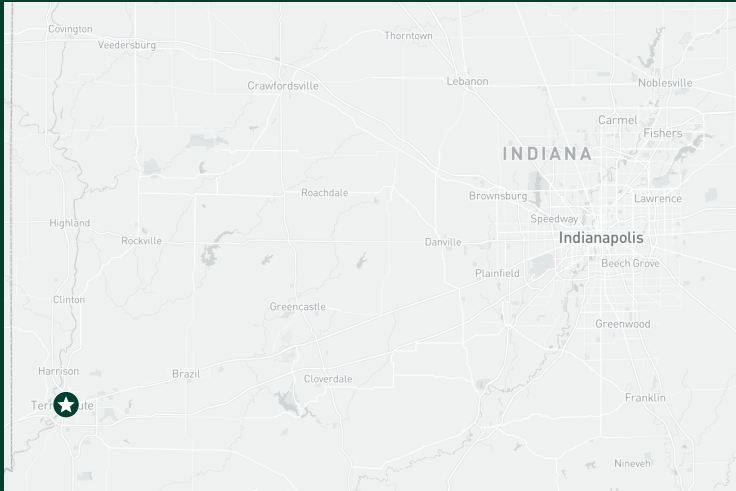
Source: INDOT 2022

CBRE

Highland Quarters

649 Cherry Street | Terre Haute, IN 47809

For Lease



Contact Us

Scott Wise

Vice President

+ 1 317 613 3124 D

+ 1 317 637 4404 F

Scott.Wise@cbre.com

CBRE Indianapolis

8888 Keystone Crossing

Suite 1000

Indianapolis, IN 46240

+ 1 317 269 1000

© 2022 CBRE, Inc. All rights reserved. This information has been obtained from sources believed reliable, but has not been verified for accuracy or completeness. You should conduct a careful, independent investigation of the property and verify all information. Any reliance on this information is solely at your own risk. CBRE and the CBRE logo are service marks of CBRE, Inc. All other marks displayed on this document are the property of their respective owners, and the use of such logos does not imply any affiliation with or endorsement of CBRE. Photos herein are the property of their respective owners. Use of these images without the express written consent of the owner is prohibited.

www.cbre.com/INDY

CBRE