



**RETAIL SPACE AVAILABLE**

1914 4th STREET N | ST. PETERSBURG, FL 33704

SECOND FLOOR





1914 4th Street N is located along the busy 4th Street corridor near downtown St. Pete—a prime commercial hub with high vehicle traffic (36,000+ CPD) and constant activity. Surrounded by a strong mix of national, regional, and local tenants, the area draws a steady stream of customers. This building is well-suited for retail or office use.



**± 7,328 SF FOR LEASE**

**SUITE 1912 | 2,000 SF AVAILABLE**

**SUITE 1918 | 2,391 SF AVAILABLE**

**SUITE 1920 | 2,937 SF COMING AVAILABLE**

**SPACES CAN BE COMBINED**

**GROSS LEASABLE AREA | 22,176 SF**

**RATE | \$27/NNN + \$11/CAM**





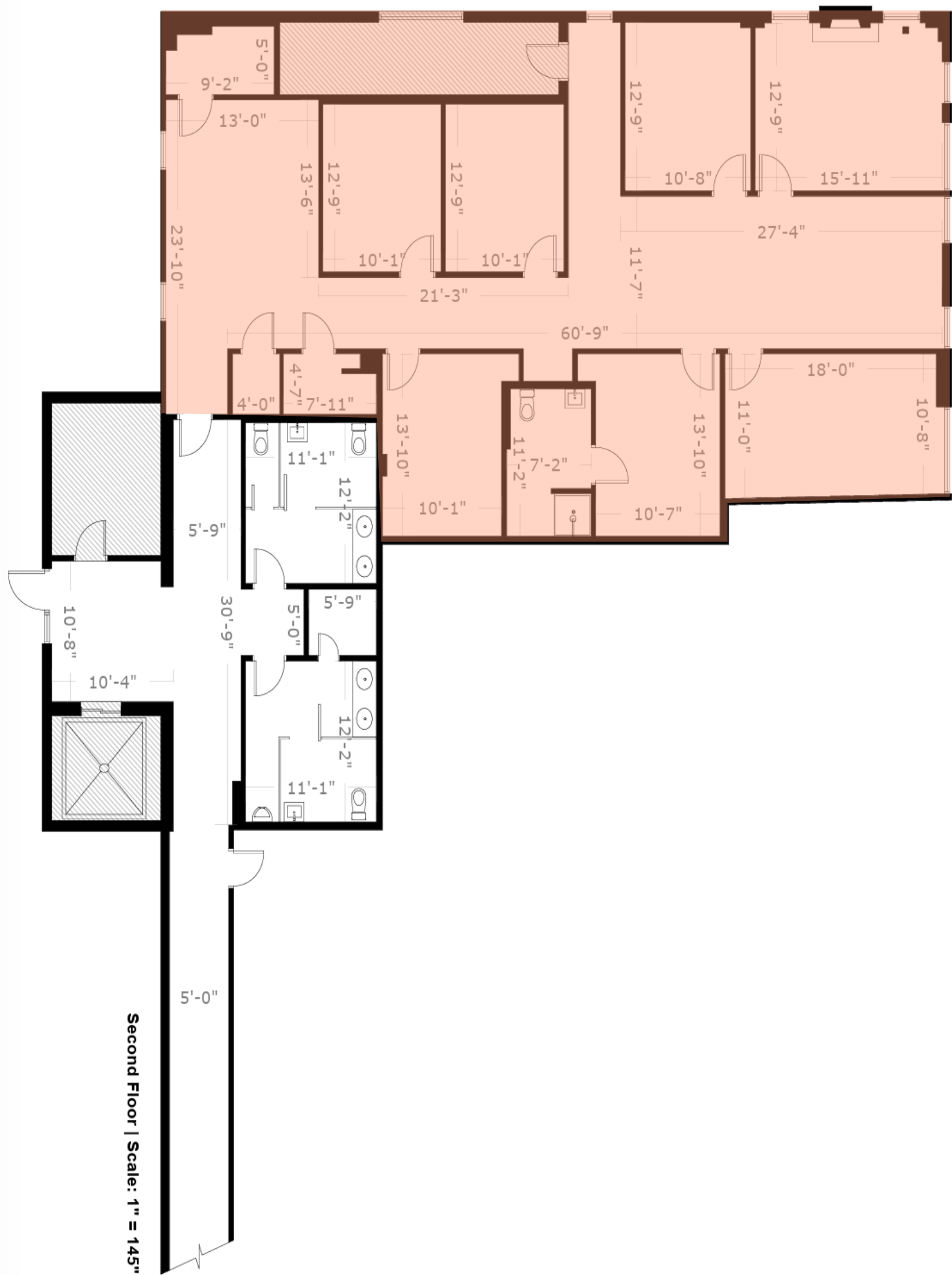
# SITE PLAN





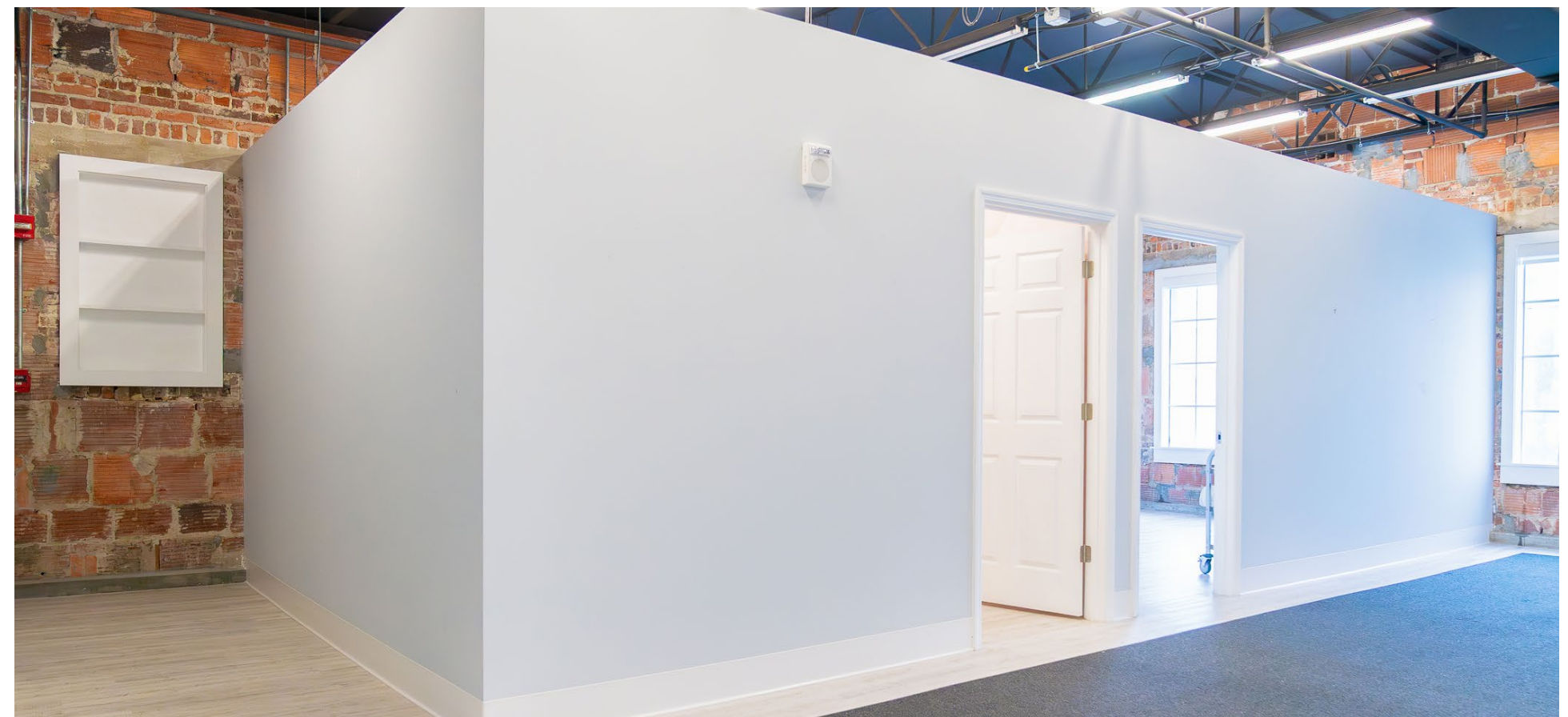
# SUITE 1918 2,391 SF

FORMER MEDSPA



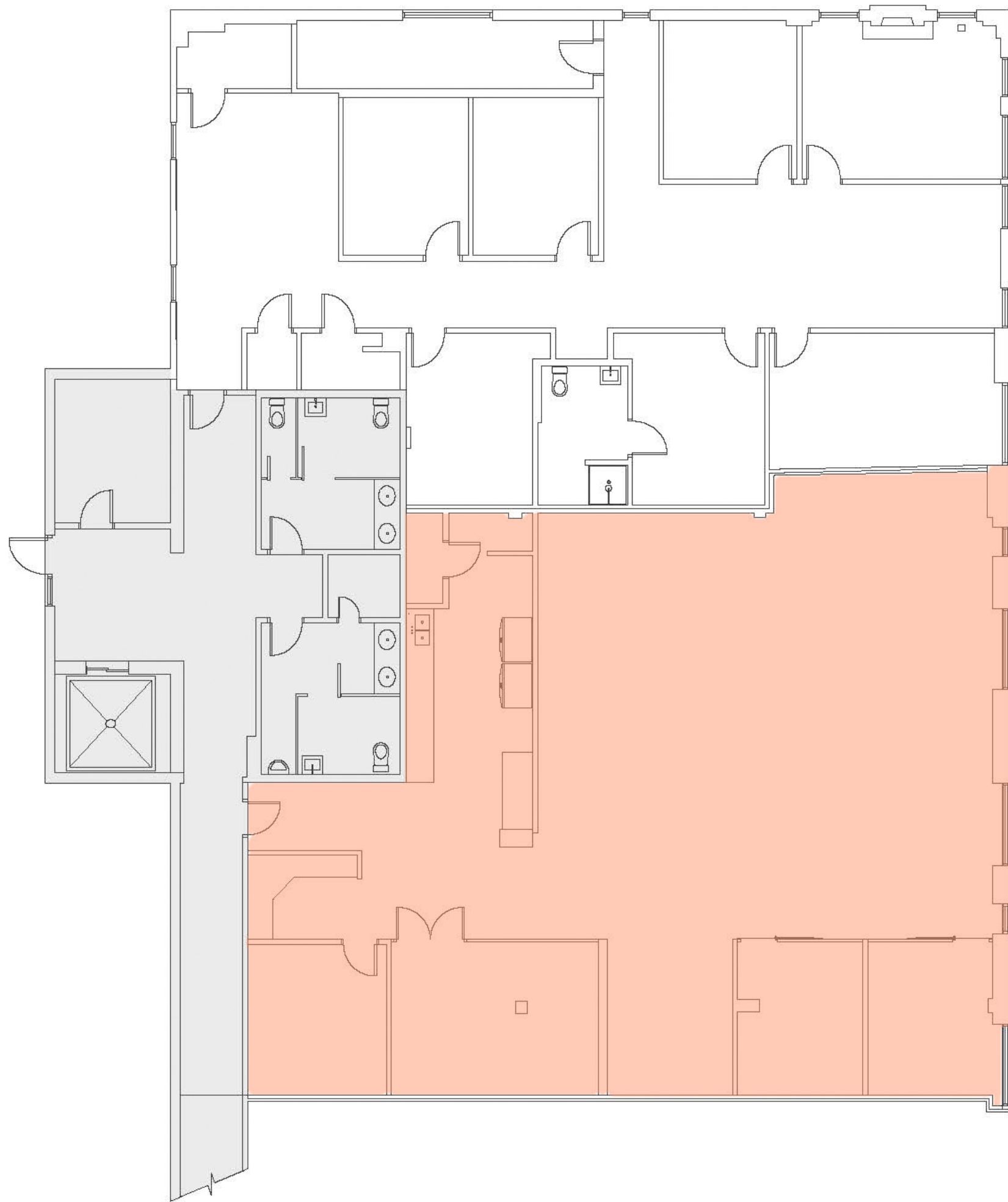


# SUITE 1918 2,391 SF





# SUITE 1920 2,937 SF





# SUITE 1912 2,000 SF





# DEMOGRAPHICS

1914 4TH STREET N | ST. PETERSBURG

## POPULATION

1 MILE	19,635
3 MILES	108,807
5 MILES	227,942

## AVG HH INCOME

1 MILE	\$145,270
3 MILES	\$118,173
5 MILES	\$73,544

## DAYTIME POPULATION

1 MILE	8,099
3 MILES	67,558
5 MILES	106,503

## MEDIAN AGE

1 MILE	47.0
3 MILES	44.0
5 MILES	44.2





# AROUND TOWN







## LAUREN CAMPBELL

FOUNDER + MANAGING BROKER

813.777.6258

lauren@archergroupre.com

## LYDIA KRESSEL

SENIOR ASSOCIATE

571.882.4712

lydia@archergroupre.com

## KYLE MASTERSON

CO-FOUNDER + PRINCIPAL

727.656.8337

kyle@archergroupre.com

**ARCHERGROUPRE.COM | INFO@ARCHERGROUPRE.COM | 813.463.0163**

This marketing material is intended for informational purposes only and does not constitute an offer or solicitation for the purchase or lease of real estate. All properties, prices, and availability are subject to change without notice. The information provided is believed to be accurate but is not guaranteed. Commercial real estate services are provided by Archer Real Estate, a licensed real estate brokerage.