

3001 GULLEY RD – SUITES E-J  
DEARBORN, MICHIGAN

OFFICE FOR LEASE  
4,035-24,210 Square Feet Available



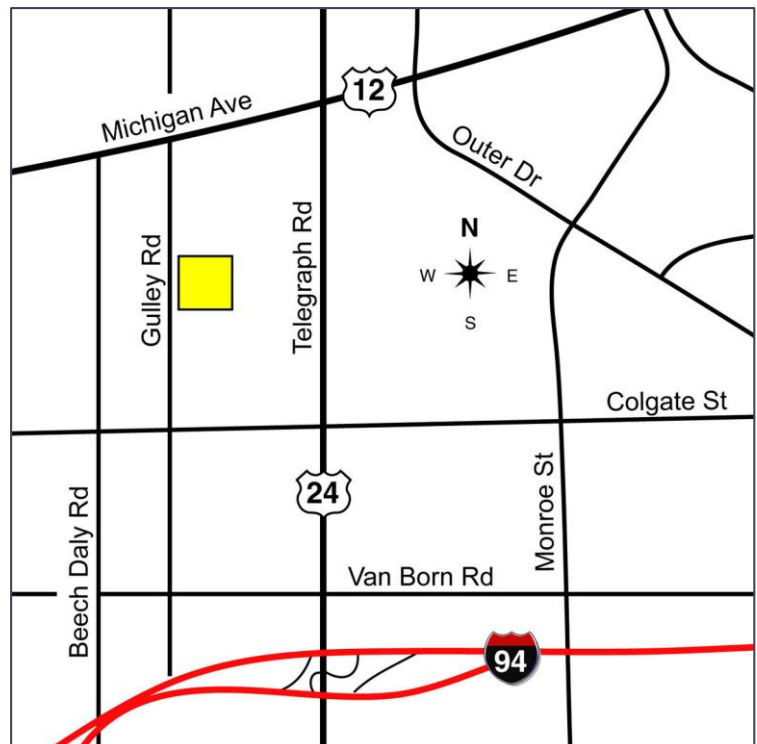
**SIGNATURE  
ASSOCIATES**  
KNOW SIGNATURE | KNOW RESULTS

## GULLEY ROAD INDUSTRIAL PARK



### PROPERTY FEATURES

- 4,035-24,210 square feet available
- 2,000 square feet of office space available
- Class B building, built in 1991
- 40,350 square foot building
- 200 parking spaces
- Great office location and design
- Near Ford World Headquarters, Engineering, Rouge Plant as well as I-94/M-12/US-24
- 5% to procuring broker
- Rental Rate: \$8.00/sq.ft. NNN



For more information, please contact:

**JACK TOWNSEND**  
(248) 948 0115  
jtownsend@signatureassociates.com

**CHRIS SECONTINE**  
(248) 799 3174  
csecontine@signatureassociates.com

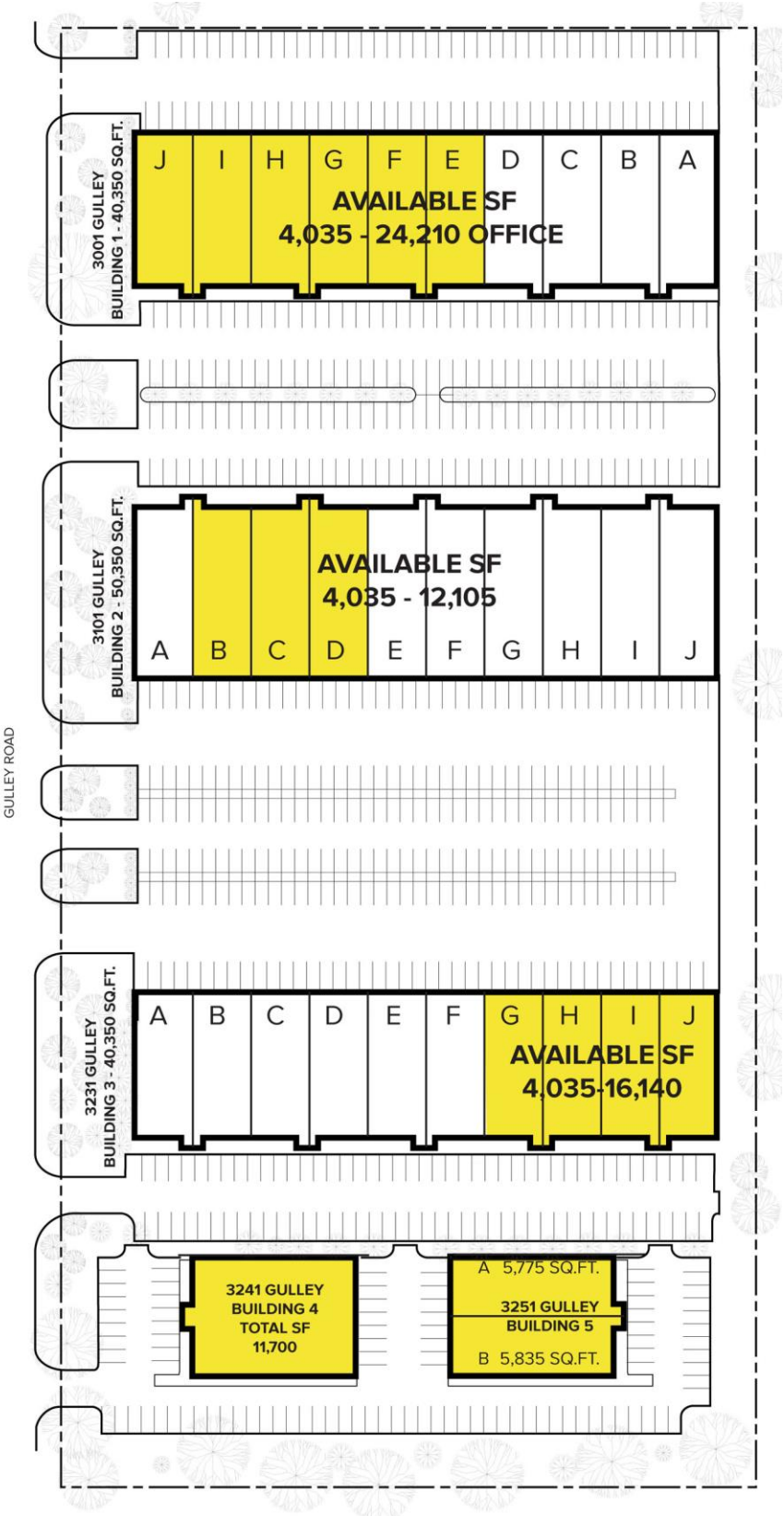
**SIGNATURE ASSOCIATES**  
One Towne Square, Suite 1200  
Southfield, MI 48076  
www.signatureassociates.com

# 3001 Gulley Road – Dearborn, Michigan

Office For Lease

4,035-24,210  
Square Feet  
AVAILABLE

Site Plan



For more information, please contact:

**JACK TOWNSEND**  
(248) 948 0115  
jtownsend@signatureassociates.com

**CHRIS SECONTINE**  
(248) 799 3174  
csecontine@signatureassociates.com

**SIGNATURE ASSOCIATES**  
One Towne Square, Suite 1200  
Southfield, MI 48076  
www.signatureassociates.com

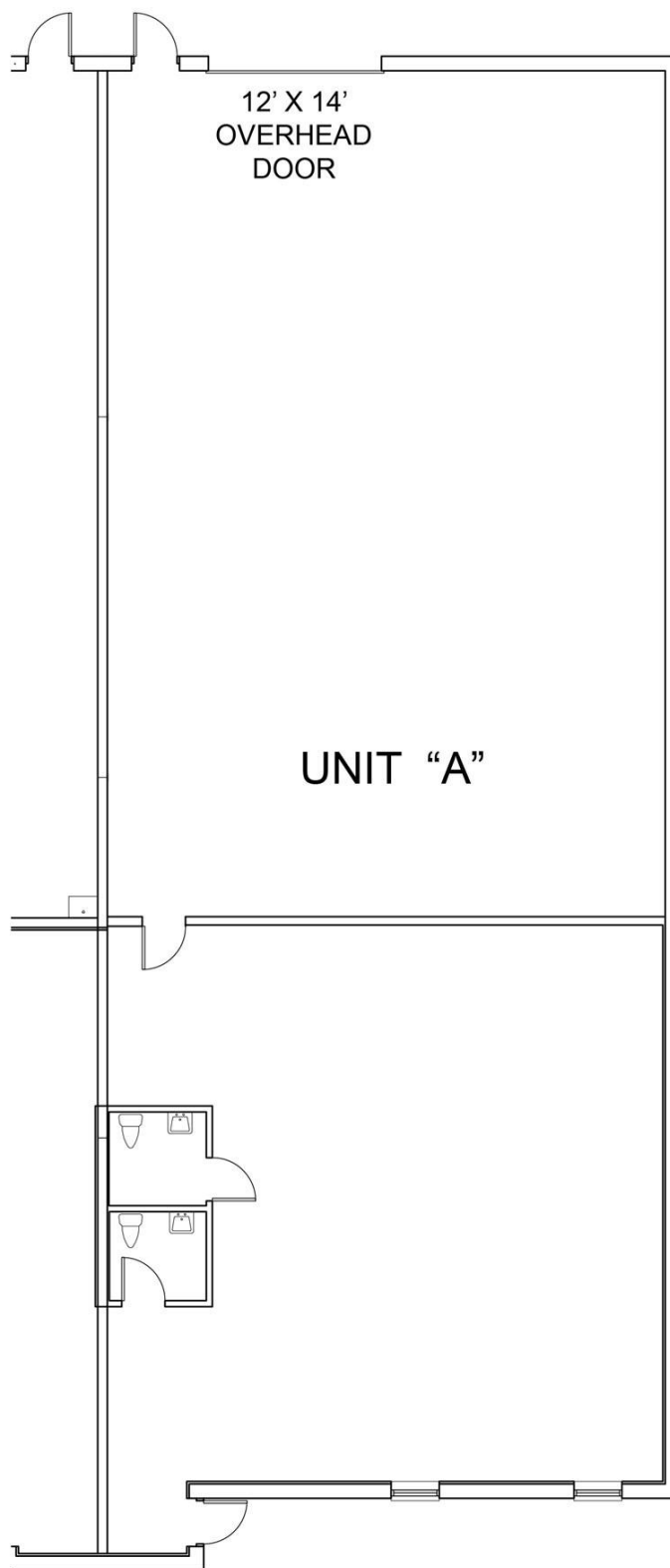
Information is subject to verification and no liability for errors or omissions is assumed. Price is subject to change and listing withdrawal.

# 3001 Gulley Road – Dearborn, Michigan

## Office For Lease

4,035-24,210  
Square Feet  
AVAILABLE

Floor Plan: Suite A



For more information, please contact:

**JACK TOWNSEND**  
(248) 948 0115  
jtownsend@signatureassociates.com

**CHRIS SECONTINE**  
(248) 799 3174  
csecontine@signatureassociates.com

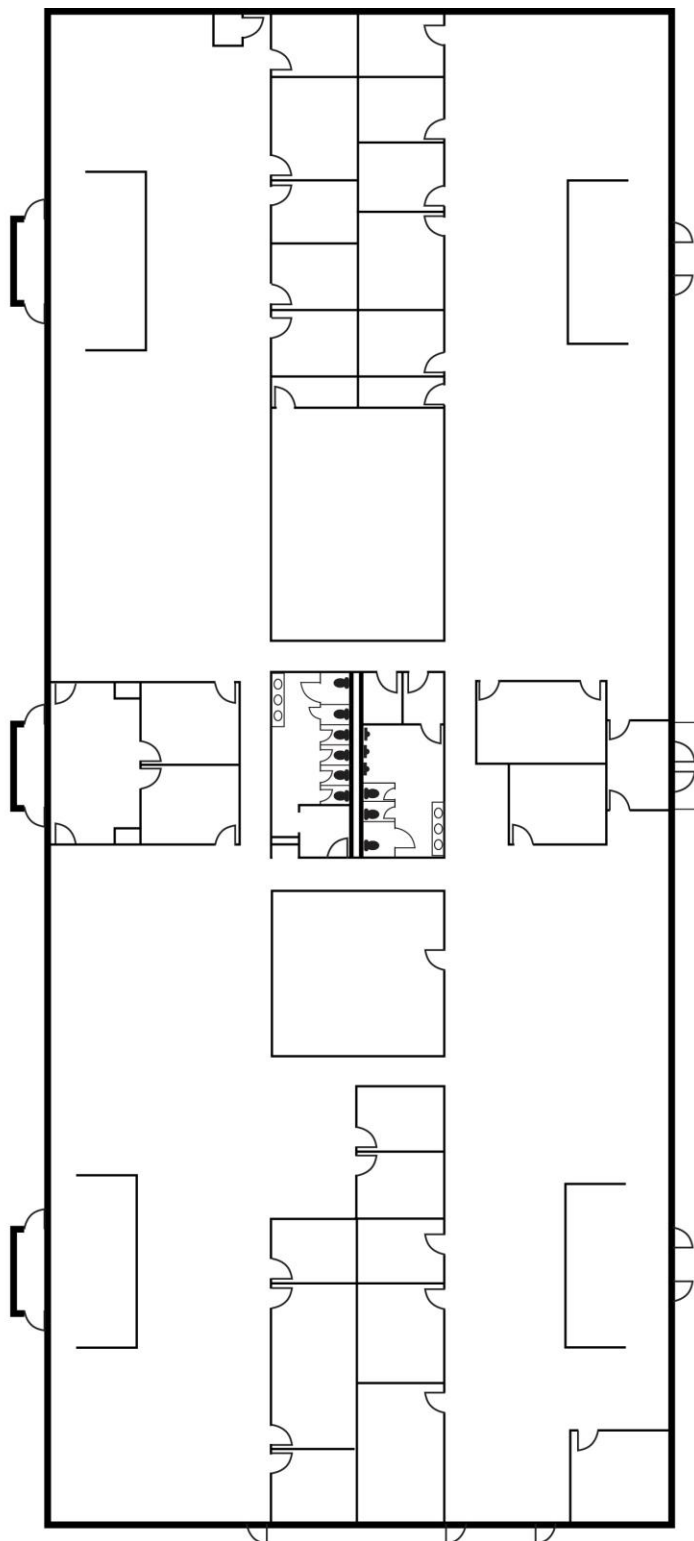
**SIGNATURE ASSOCIATES**  
One Towne Square, Suite 1200  
Southfield, MI 48076  
www.signatureassociates.com

# 3001 Gulley Road – Dearborn, Michigan

## Office For Lease

4,035-24,210  
Square Feet  
AVAILABLE

Floor Plan: Suite E-J



For more information, please contact:

**JACK TOWNSEND**  
(248) 948 0115  
jtownsend@signatureassociates.com

**CHRIS SECONTINE**  
(248) 799 3174  
csecontine@signatureassociates.com

**SIGNATURE ASSOCIATES**  
One Towne Square, Suite 1200  
Southfield, MI 48076  
www.signatureassociates.com



# 3001 Gulley Road – Dearborn, Michigan

Office For Lease

4,035-24,210  
Square Feet  
AVAILABLE

Aerial



For more information, please contact:

**JACK TOWNSEND**

(248) 948 0115

[jtownsend@signatureassociates.com](mailto:jtownsend@signatureassociates.com)

**CHRIS SECONTINE**

(248) 799 3174

[csecontine@signatureassociates.com](mailto:csecontine@signatureassociates.com)

**SIGNATURE ASSOCIATES**

One Towne Square, Suite 1200

Southfield, MI 48076

[www.signatureassociates.com](http://www.signatureassociates.com)