

2910 N. Arlington Heights Road, Arlington Heights IL

± 6,270 SF FOR LEASE



SPECIFICATIONS

AVAILABLE: 6,270 SF

OFFICE: 2,000 SF

POWER: 200 Amps

CEILING HEIGHT: 16' Clear

SPRINKLERS: Yes

PARKING: Ample

LOADING: 1 Dock

LEASE RATE: \$10.95 Modified Gross

- Great Exposure on Arlington Heights Rd.
- Plenty of Parking
- Easy Access to Route 53
- Nice Office Finishes



Contact:

Brian Bocci, SIOR
847-310-4296
bbocci@entrecommercial.com

Jack Steineke
847-309-0018
jsteineke@entrecommercial.com

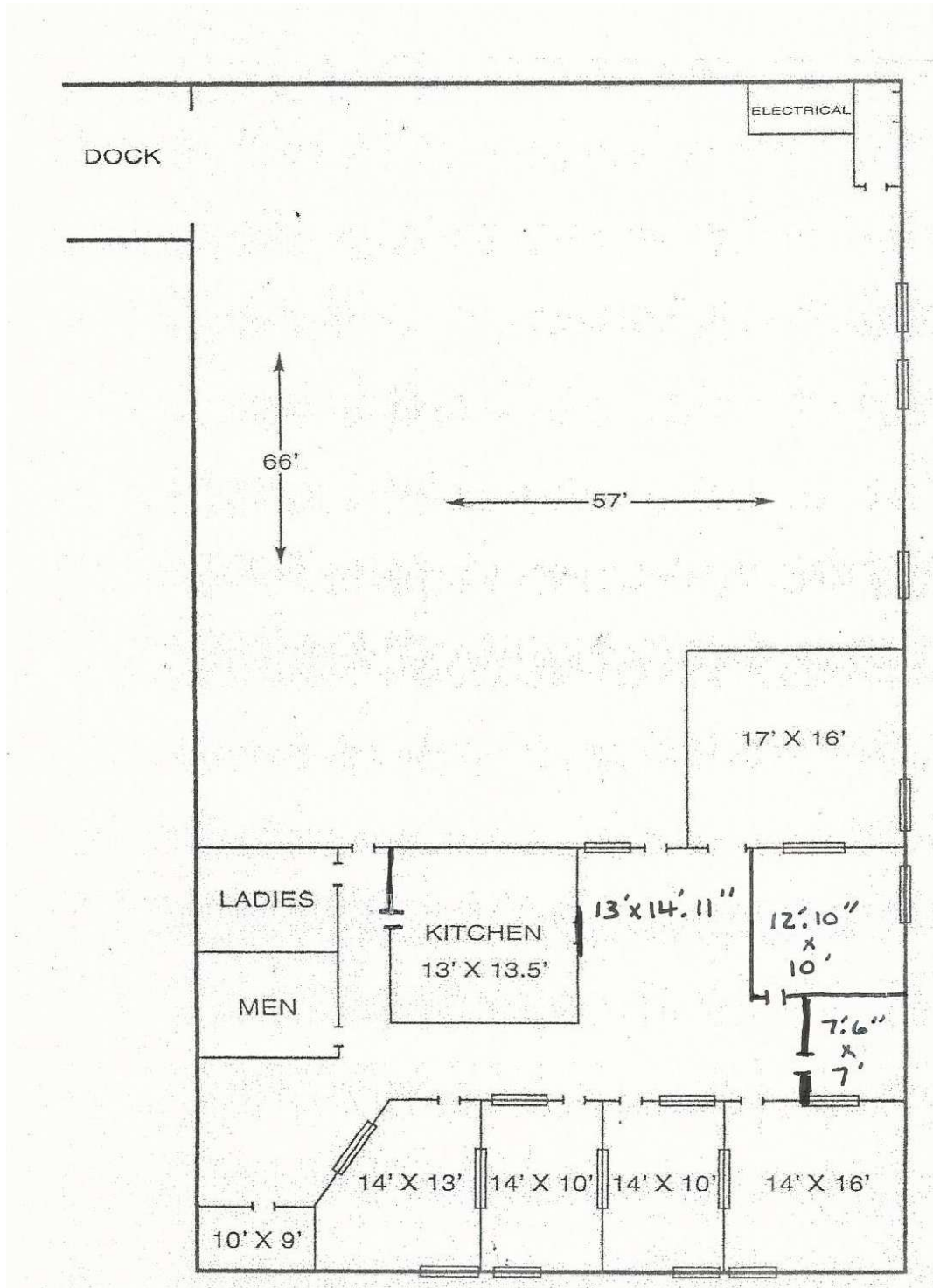
www.entrecommercial.com

3550 Salt Creek Lane, Suite 104, Arlington Heights, IL. 60005

ENTRE
Commercial Realty LLC

2910 N. Arlington Heights Road, Arlington Heights IL

± 6,270 SF FOR LEASE



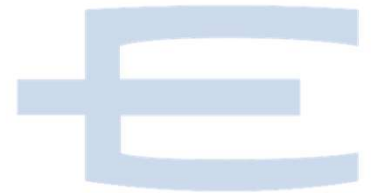
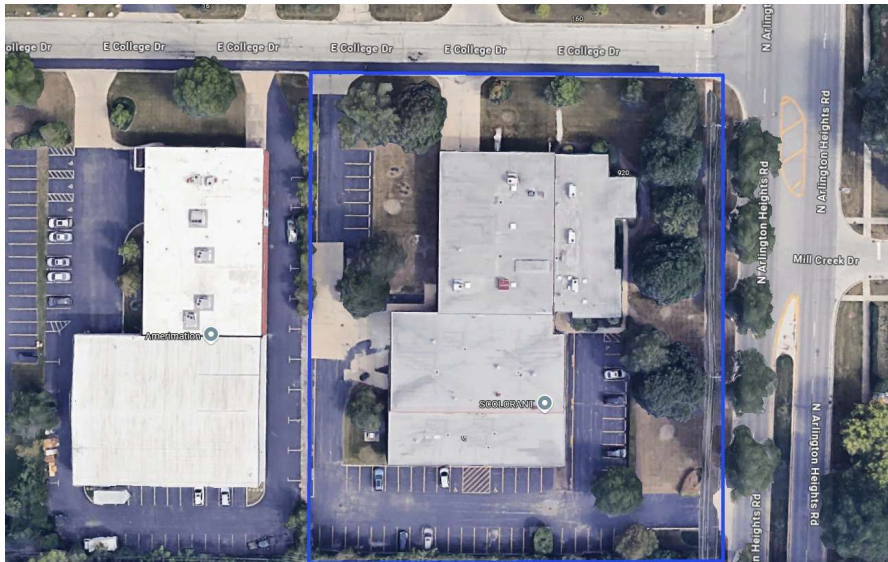
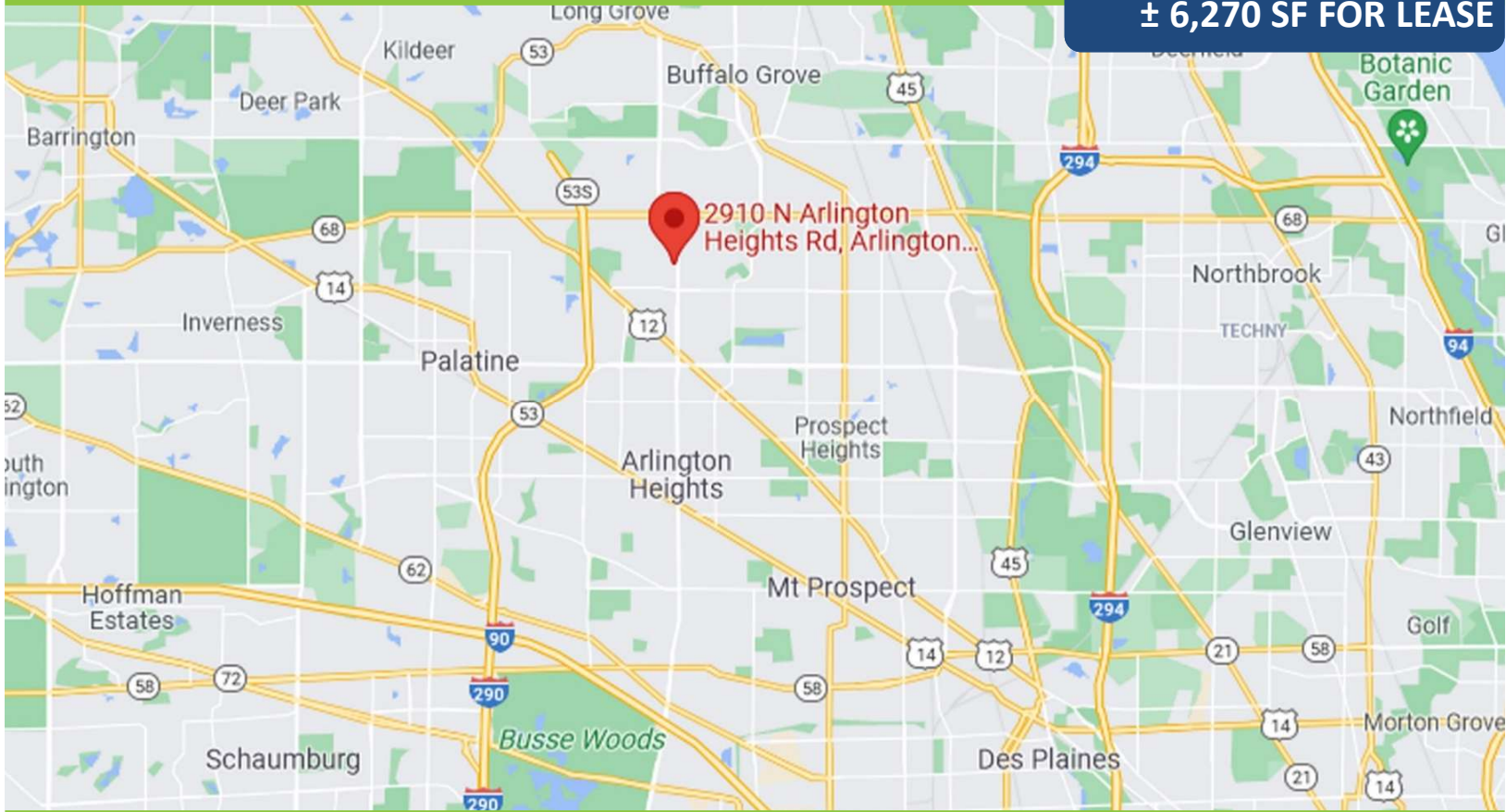
www.entrecommercial.com

3550 Salt Creek Lane, Suite 104, Arlington Heights, IL. 60005

ENTRE
Commercial Realty LLC

2910 N. Arlington Heights Road, Arlington Heights IL

± 6,270 SF FOR LEASE



Contact:

Brian Bocci, SIOR
847-310-4296
bbocci@entrecommercial.com

Jack Steineke
847-309-0018
jsteineke@entrecommercial.com

www.entrecommercial.com

3550 Salt Creek Lane, Suite 104, Arlington Heights, IL. 60005

ENTRE
Commercial Realty LLC