



FOR LEASE

DEERWOOD OFFICE PARK

±1,256 SF OFFICE SPACE AVAILABLE

111 DEERWOOD ROAD, SUITE 175, SAN RAMON, CA 94583

LOCAL EXPERTISE. INTERNATIONAL REACH. WORLD CLASS.

Mark Rinkle

Principal  
mrinkle@lee-associates.com  
925-737-4145  
LIC NO 01512632

Kirsten Johnsen

Associate  
kjohnsen@lee-associates.com  
925-519-7818  
LIC NO 02133540

# PROPERTY HIGHLIGHTS



Three Story Garden Style Office Building



Office or Medical uses approved



Pristine Views



Parking Ratio of 5/1,000±SF



Walking distance to Restaurants and Shopping



Great access to I-680



Suite 175: ±1,256 SF

Space includes:

- Two (2) Private Offices
- Conference Room
- Kitchen
- Work Station



Lease Rate: \$3.00/SF Full Service



Mark Rinkle

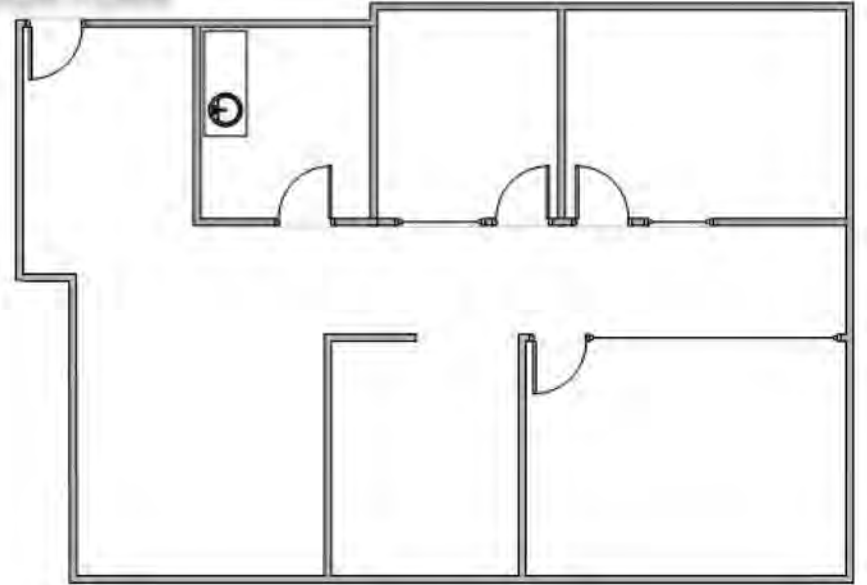
Principal  
mrinkle@lee-associates.com  
925-737-4145  
LIC NO 01512632



Kirsten Johnsen

Associate  
kjohnsen@lee-associates.com  
925-519-7818  
LIC NO 02133540

## FLOOR PLAN



\*FLOOR PLAN NOT TO SCALE



LEE-ASSOCIATES.COM / PLEASANTON /

All information furnished regarding property for sale, rental or financing is from sources deemed reliable, but no warranty or representation is made to the accuracy thereof and same is submitted to errors, omissions, change of price, rental or other conditions prior to sale, lease or financing or withdrawal without notice. No liability of any kind is to be imposed on the broker herein.

Lee & Associates® East Bay, Inc. Corp. ID 01194869 5000 Pleasanton Ave, Suite 220, Pleasanton, CA 94566

111  
DEERWOOD ROAD, SUITE 175