

Western Massachusetts Spotlight

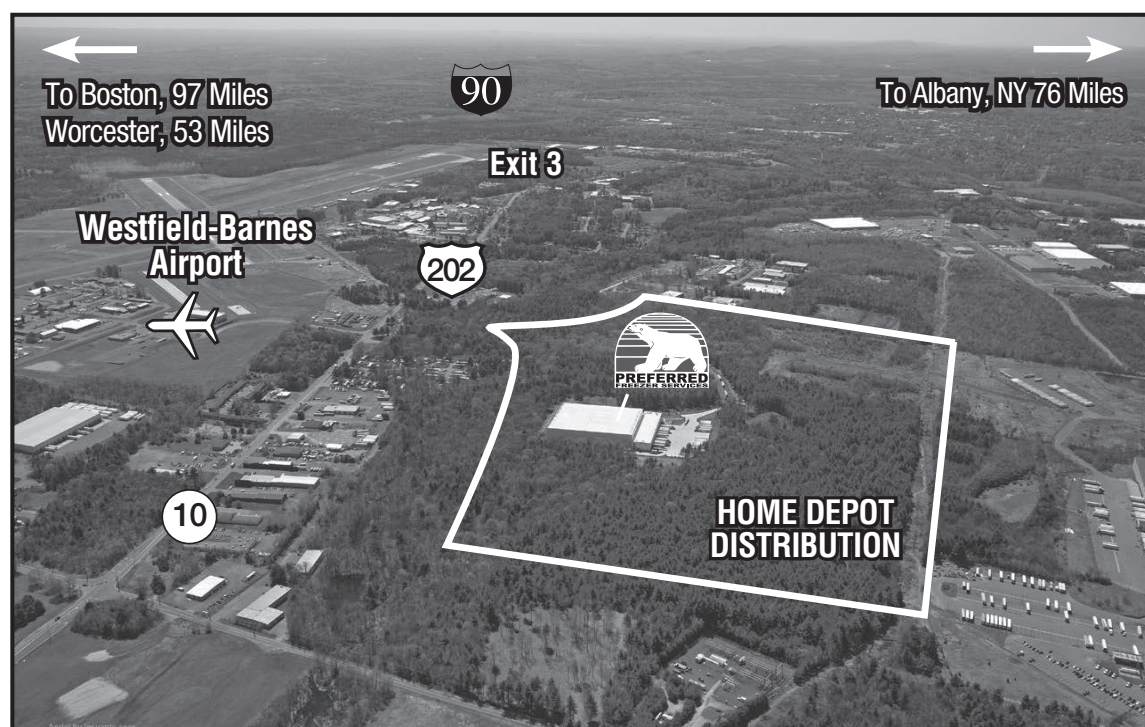
BUILT BY R.P. MASIELLO; ARCHITECTURAL DESIGN BY GREGORY J. O'CONNOR ASSOCIATES, INC.

Development Associates begins 3rd Northampton office building at 15 Atwood Dr. - a 66,000 s/f 3-story facility

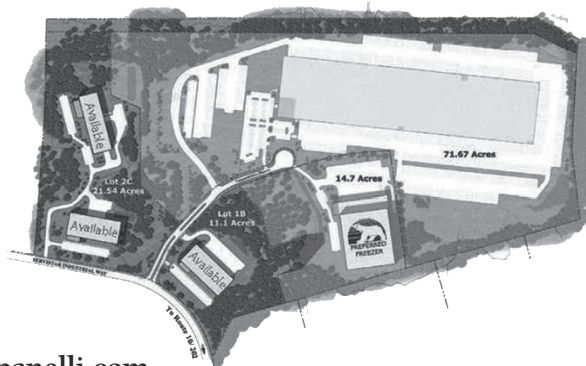
NORTHAMPTON, MA Development Associates has begun construction of a 66,000 s/f 3-story office building at 15 Atwood Dr., located south of I-91 at exit 18. The project is being developed by Northwood Development LLC, whose owners are local investors Edward J. O'Leary, and his daughters Eileen O'Leary Sullivan and Susan O'Leary Mulhern. The project is located on the site of the former Clarion Hotel and Conference Center that was demolished in 2016 to prepare for redevelopment. The overall site development plan approved by the city provides for two new office buildings on the site; the one under



CAMPANELLI BUSINESS PARK OF WESTFIELD



- Convenient Location on the Mass Pike
- Easy Access to Rte 91
- 150,000 SF Available for Development
- Offers both Multi-building and Single-building Scenarios
- Proximity to Interstate Creates Unique Opportunity for Regional Distribution



Visit www.Campanelli.com
for more information, or contact:

Developed &
Owned by:

Campanelli

Robert C. DeMarco:

Tel: 781-849-1440 | rdemarco@campanelli.com

Brokerage by:

JENNINGS
REAL ESTATE SERVICES, LLC

Kevin M. Jennings:

Tel: 413-731-7770 | kmj@jenningsllc.com

construction being closer to Rte. 5 and a future multi-story building at the rear of the property near I-91.

The new building plan offers over 60,000 s/f of professional and medical space for lease with occupancy expected at the end of 2018. The Massachusetts Trial Court has leased 22,000 s/f, consisting of the entire first floor plus a portion of the second floor. The remainder of the second floor and the entire 20,000 s/f third floor are available for new tenants.

Ken Vincunas, managing partner of Development Associates, said, "The brand new open floor plan allows the initial tenants the opportunity to have floor plans custom-designed to suit their exact requirements and we are already attracting quite a bit of tenant interest."

The construction plans show that the building will have abundant windows, a covered drop-off lane, two elevators, energy-efficient design, and hundreds of parking spaces.

This is the third major office building developed by Development Associates at this location, following two earlier successful three-story buildings on the south side of Atwood Dr. These previous buildings, which came online in 2012 and 2013, are fully leased, primarily to Mass General/Cooley Dickinson Hospital.

The new building is being built by general contractor R.P. Masiello of Boylston MA, with architectural design by Gregory J. O'Connor Associates, Inc. of Worcester MA. Development Associates is the construction manager and leasing broker for the project.

To comment on this story
visit nerej.com