



# INDUSTRIAL PROPERTY | FOR SUBLEASE

4326 SW 21ST ST., OKLAHOMA CITY, OK

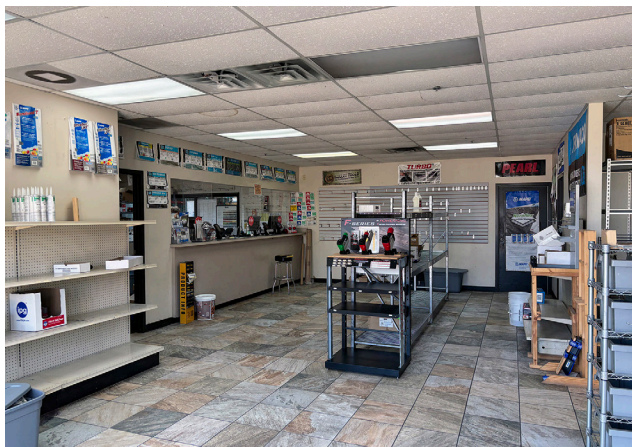
**KARLEY HARPER**  
kharper@newmarkrp.com  
C: 405.371.3498

**BRETT PRICE, CCIM, SIOR**  
bprice@newmarkrp.com  
C: 405.613.8380

**KRIS DAVIS, SIOR**  
kgdavis@newmarkrp.com  
C: 405.202.9525

**NEWMARK**  
ROBINSON PARK

# 4326 SW 21ST ST. / SUBLEASE



## DETAILS

|               |                           |
|---------------|---------------------------|
| Available SF  | 20,454 SF                 |
| Sublease Rate | \$5.00/SF/YR              |
| Building Size | 20,454 SF                 |
| Lot Size      | 1.32 Acres                |
| Submarket     | Southwest                 |
| Cross Streets | SW 21st & S Meridian Ave. |



## HIGHLIGHTS

- 18,654 SF± warehouse | 1,800 SF± office
- 2 offices, showroom, office restroom & warehouse restroom
- 17' clear height
- (3) 10' x 12' overhead doors
- (2) 8' x 8' docks with end of dock levelers
- 33.5' x 34.5' column spacing
- LED lighting
- Warehouse heat
- 480V 3-phase power
- Current lease expires 9/30/2026