



RICHLAWN CENTER



**CUSHMAN &
WAKEFIELD**

Commercial Kentucky

4141 SHELBYVILLE RD

Louisville, KY 40207

1,200 SF AVAILABLE

PROPERTY HIGHLIGHTS

- 1,200 SF inline space available in desirable St. Matthews location
- Shelbyville Road frontage
- Wal-Mart Grocery outlot
- 49,520 cars per day average daily traffic
- Excellent area population and income demographics
- Parking at front door



CRAIG COLLINS

Senior Director

502 589 5150 ext. 221

ccollins@commercialkentucky.com

333 E. Main Street, Suite 510 | Louisville, KY 40202

phone: +1 502 589 5150

www.CommercialKentucky.com

©2019 Cushman & Wakefield. All rights reserved. The information contained in this communication is strictly confidential. This information has been obtained from sources believed to be reliable but has not been verified. No warranty or representation, express or implied, is made as to the condition of the property (or properties) referenced herein or as to the accuracy or completeness of the information contained herein, and same is submitted subject to errors, omissions, change of price, rental or other conditions, withdrawal without notice, and to any special listing conditions imposed by the property owner(s). Any projections, opinions or estimates are subject to uncertainty and do not signify current or future property performance.

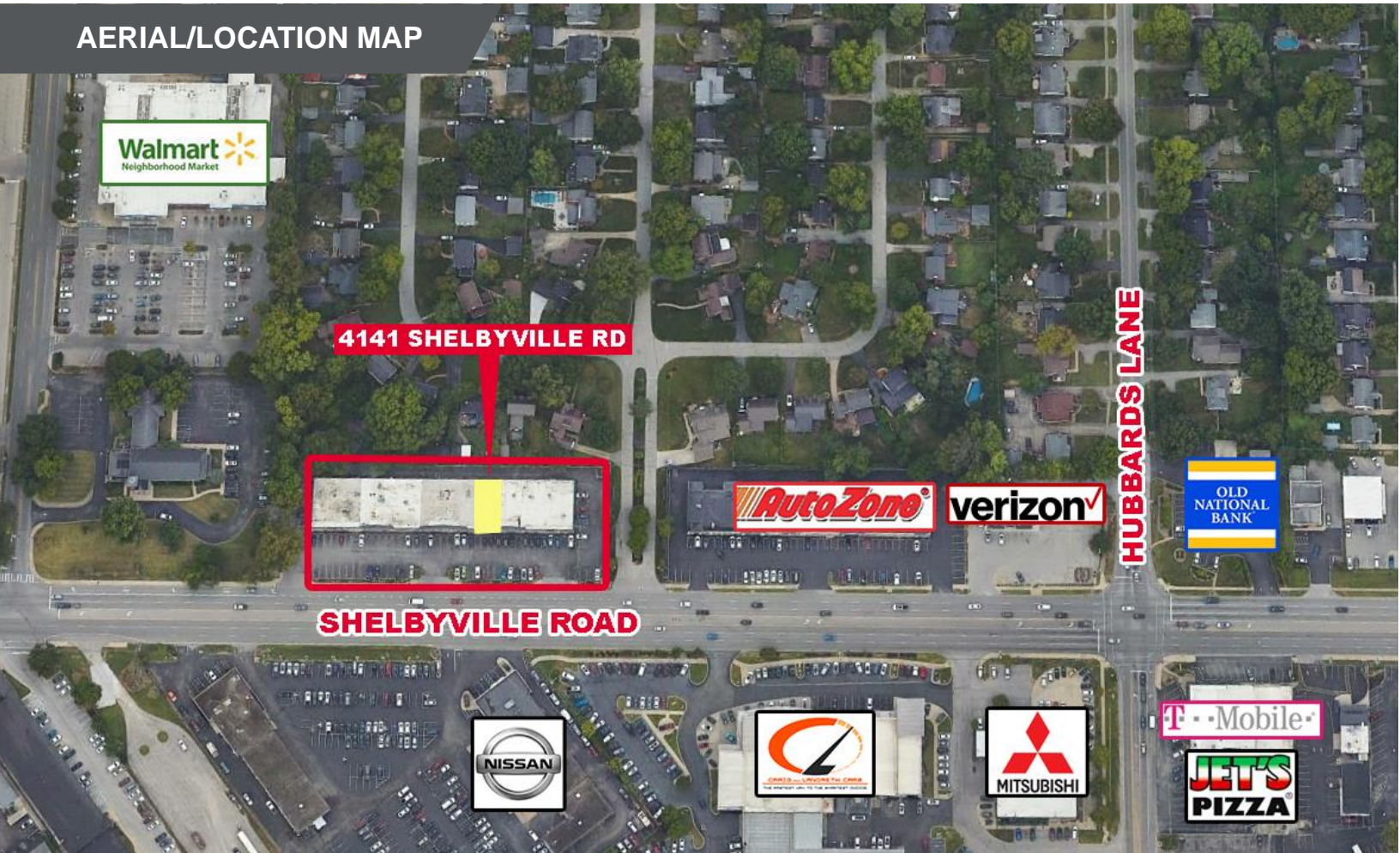
4141 SHELBYVILLE RD

Louisville, KY 40207

1,200 SF AVAILABLE



AERIAL/LOCATION MAP



Demographics

	1 Mile	2 Mile	3 Mile
Population	13,084	86,577	234,811
AVG. HH Income	\$98,358	\$111,805	\$105,445
Daytime Population	16,411	97,273	261,362

Traffic Counts

Shelbyville Rd	25,440 ADT
I- 264	13,350 ADT

CRAIG COLLINS

Senior Director
502 589 5150 ext. 221
ccollins@commercialkentucky.com

333 E. Main Street, Suite 510 | Louisville, KY 40202
phone: +1 502 589 5150
www.CommercialKentucky.com