

ALMADEN OAKS PLAZA

NEC MERIDIAN AVE. & REDMOND AVE
6055-6081 MERIDIAN AVE
1337-1359 REDMOND AVE
SAN JOSE, CA 95120



FOR LEASE

FEATURES

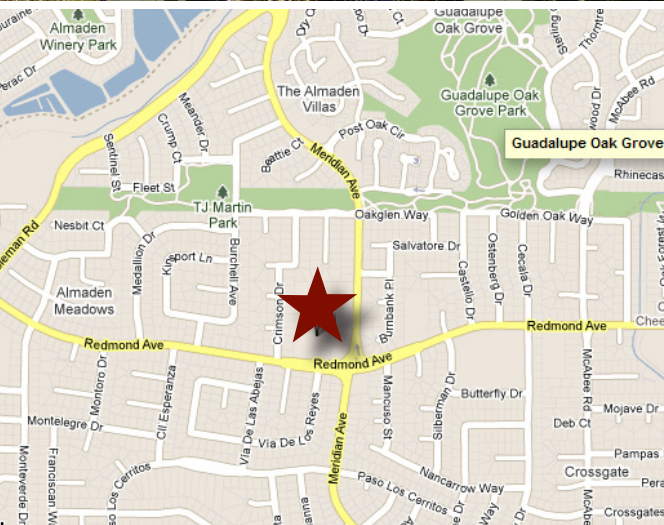
- 164,000 Square Foot Neighborhood Shopping Center
- Busy Almaden Valley Location
- Anchored by Lucky's Supermarket and Rite Aid
- End-Cap and In-Line Spaces Available
- Strong Demographics
- Ample Parking

Spaces Available:

- 1,920 Square Feet
- 16,250 Square Feet - ANCHOR OPPORTUNITY

DEMOGRAPHICS 2017 EST.

	1 Mile	3 Miles	5 Miles
Population	17,393	133,085	347,567
Average HH Income	\$192,516	\$141,298	\$130,545



PRIME COMMERCIAL
INCORPORATED

Dixie Divine

408.313.8900

ddivine@primecommercialinc.com

CA LICENSE NO. 00926251 & 01481181

Doug Ferrari

408.879.4002

dferrari@primecommercialinc.com

CA LICENSE NO. 01032363

Denise Lupretta

408.314.3240

dlupretta@primecommercialinc.com

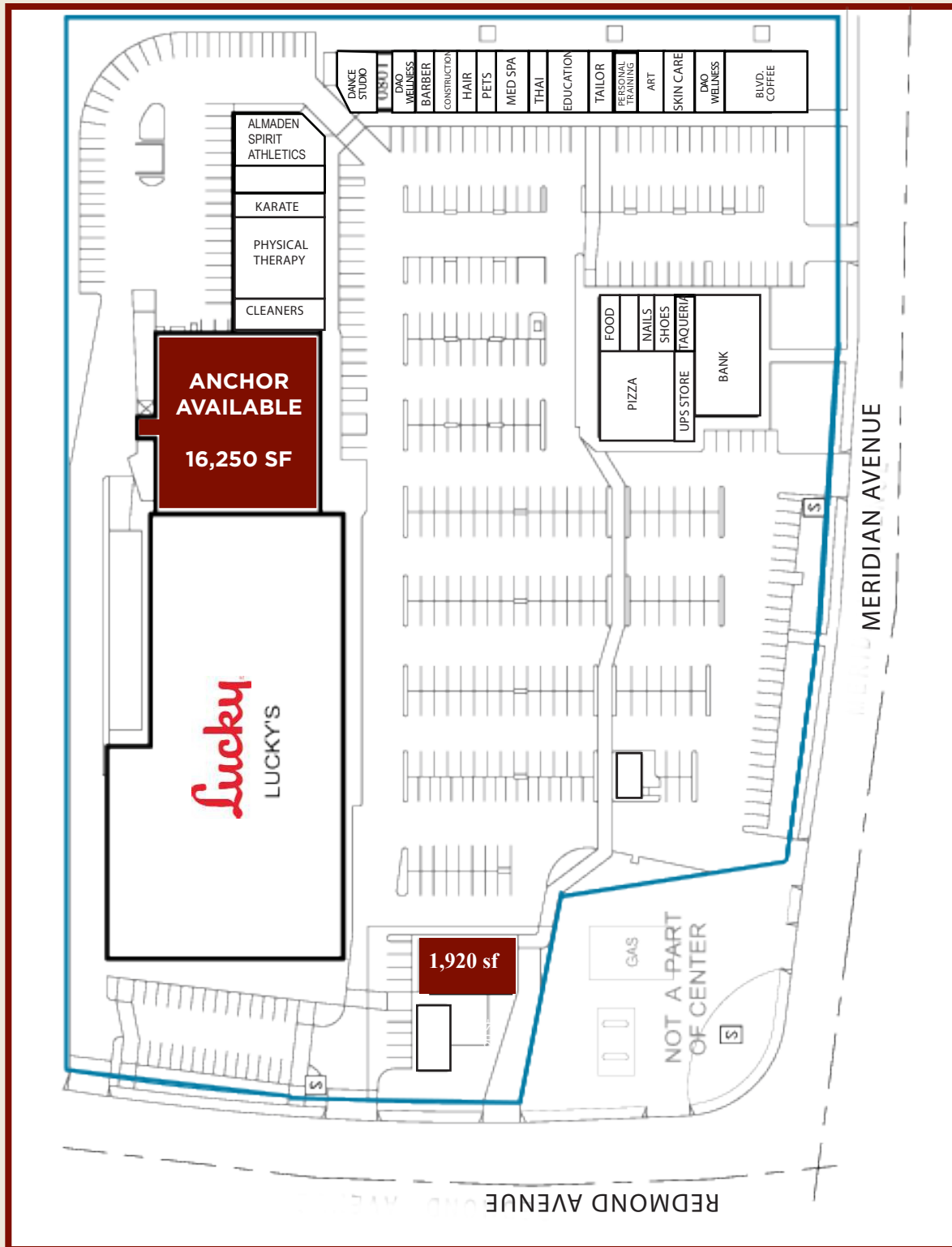
CA LICENSE NO. 01735925

1543 LAFAYETTE STREET · SUITE C · SANTA CLARA · CA · 95050 | OFFICE 408.879.4000 | FAX 408.879.4004 | WWW.PRIMECOMMERCIALINC.COM

Prime Commercial, Inc. has obtained the information contained herein from sources we deem reliable. However, we have not verified its accuracy and make no guarantee, warranty or representation about it. It is subject to errors, modification, omission, change of price and/or terms, prior lease sale or financing, or withdrawal without notice. It may include projections, opinions, or assumptions or estimated for example only, and they may represent current or future performance of the property. You and your tax and legal advisors should conduct your own of the property and transaction. The information provided in this brochure are estimates only, not representations, and are not intended to be relied upon for any purpose. All demographic information contained in this brochure is obtained from esri.

SITE PLAN

NEC MERIDIAN AVE. & REDMOND AVE
6055-6081 MERIDIAN AVE
1337-1359 REDMOND AVE
SAN JOSE, CA 95120



AVAILABLE
PENDING

1543 LAFAYETTE STREET • SUITE C • SANTA CLARA • CA • 95050 | OFFICE 408.879.4000 | FAX 408.879.4004 | WWW.PRIMECOMMERCIALINC.COM

Prime Commercial, Inc. has obtained the information contained herein from sources we deem reliable. However, we have not verified its accuracy and make no guarantee, warranty or representation about it. It is subject to errors, modification, omission, change of price and/or terms, prior lease sale or financing, or withdraw without notice. It may include projections, opinions, or assumptions or estimated for example only, and they may represent current or future performance of the property. You and your tax and legal advisors should conduct your own of the property and transaction. The information provided in this brochure are estimates only, not representations, and are not intended to be relied upon for any purpose. All demographic information contained in this brochure is obtained from esri.