

Industrial Space for Lease

Cherry Lane Center 1

Laurel, Maryland



Available Space:

14228 - 14230

6,840 SF

50% Office

50% Warehouse with

- 22 ft ceiling height

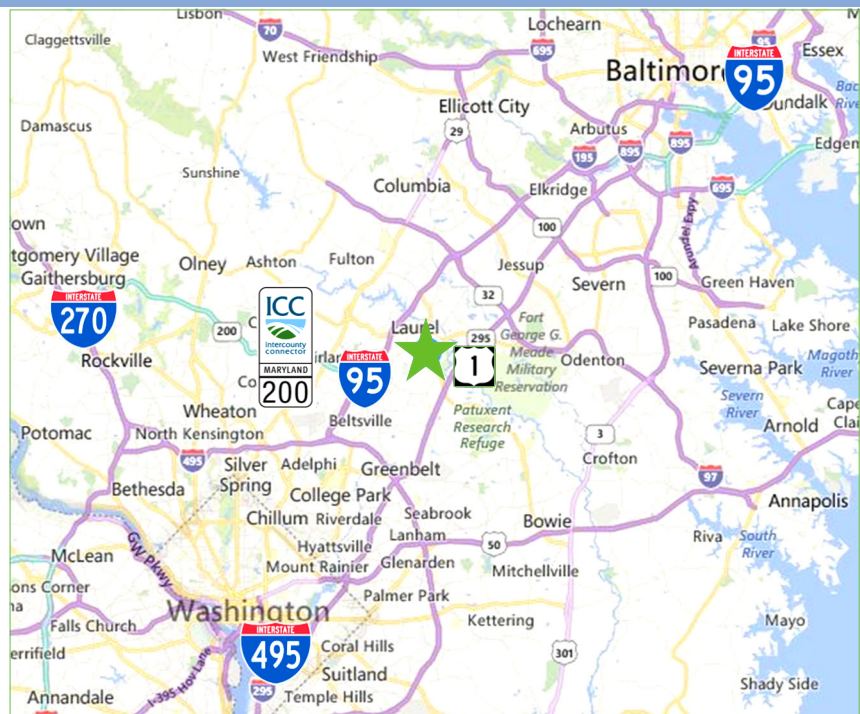
- One overhead door

Rate: \$10.00/PSF NNN

14200-14254 Cherry Lane Court · Laurel, MD • 89,120 SF - 2 Stories

Convenient to:

- ▶ Rte. 1/Baltimore Ave. (0.4 miles)
- ▶ Rte. 197/Laurel Bowie Rd. (0.6 miles)
- ▶ Rte. 198/Ft. Meade Rd. (1.4 miles)
- ▶ Rte. 200/ICC (2.6 miles)
- ▶ I-95 (3.2 miles)
- ▶ MD 295 (3.6 miles)
- ▶ Walking distance to Laurel Towne Centre
- ▶ 1.5 miles from Home Depot
- ▶ Less than 1 mile from Lowe's Home Improvement
- ▶ Numerous other shops & restaurant chains on Route 1 & Cherry Lane



For Leasing Opportunities Contact:

Bobby Kravitz

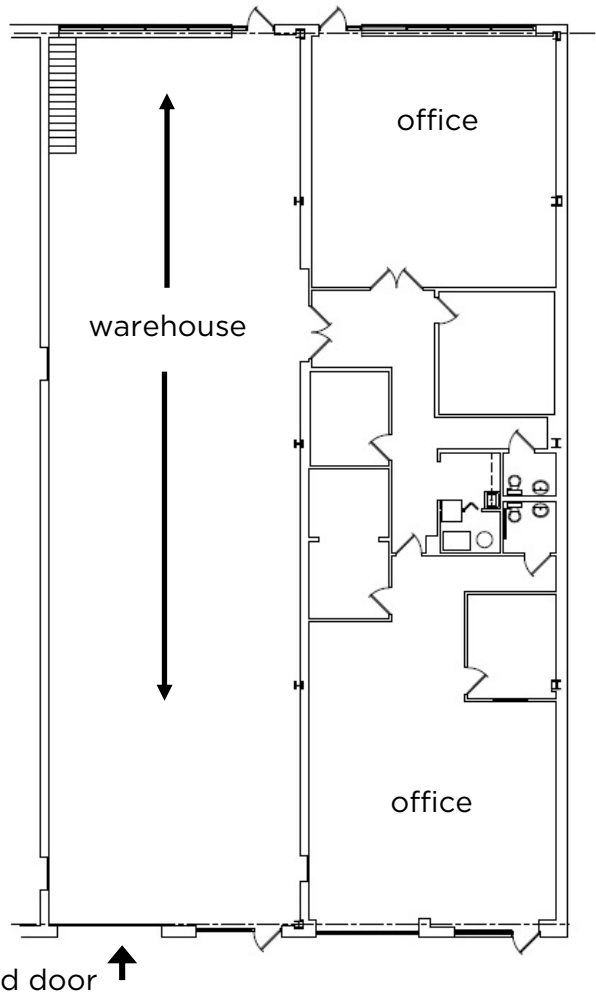
Office: 301.795.1457

BKravitz@PromarkPartners.com



451 Hungerford Drive • Suite 700 • Rockville, MD 20850 301.795.1400 • PromarkPartners.com

Site Plan • Floor Plan
 14228 - 30 Cherry Lane Court
 Laurel, Maryland



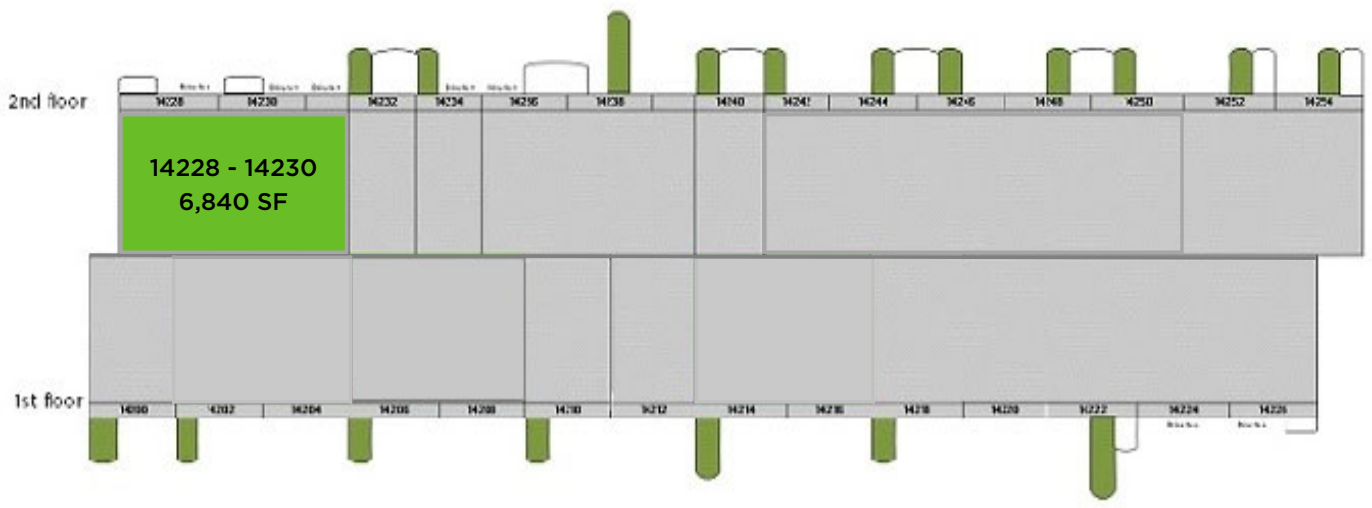
Property Highlights:

- ▶ Parking: 2/1,000 SF leased
- ▶ 220 free surface parking spaces
- ▶ Zoning: I-1 Zone (Light Industrial); PG County

TRANSPORTATION



- Laurel Commuter Rail (Camden Line) 1.7 mi
- Laurel Racetrack Commuter Rail (Camden Line) 2.2 mi



451 Hungerford Drive • Suite 700 • Rockville, MD 20850 301.795.1400 • PromarkPartners.com

The materials provided herein are for informational purposes only and are not intended to constitute an offer or solicitation. Although information contained herein is from sources deemed reliable, such information has not been verified and is submitted subject to errors, omissions, change of price, withdrawal or further change without notice.