

FOR SALE/BUILD TO SUIT

325 S. 6th Place, Lowell, AR (Tract B, S. 6th Place & Latham)



\$1,038,648.00

(\$12.00 psf)

Lot: 86,554 sq. feet

Zoned: Thoroughfare Commercial

Visible from I-49 and Dixieland Road extention



PAT MORRISON

P. 479-464-4292

C. 479-936-4200

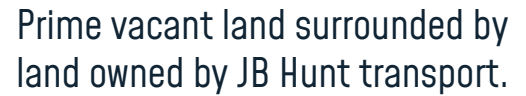
PatMorrison@dvrxgroup.com

5204 W. VILLAGE PKWY, SUITE 9

ROGERS, AR 72758

P. 479-464-4292

www.dvrxgroup.com



Newly finished Dixieland Road extension that allows for another north/south corridor parallel to I-49.

Adjacent to Mercy Pediatric Clinic
this could be a perfect location for
another medical or medical office.



All information is from reliable sources; however, no guarantees are made.



PAT MORRISON

P. 479-464-4292

C. 479-936-4200

PatMorrison@advrxgroup.com

5204 W. VILLAGE PKWY, SUITE 9

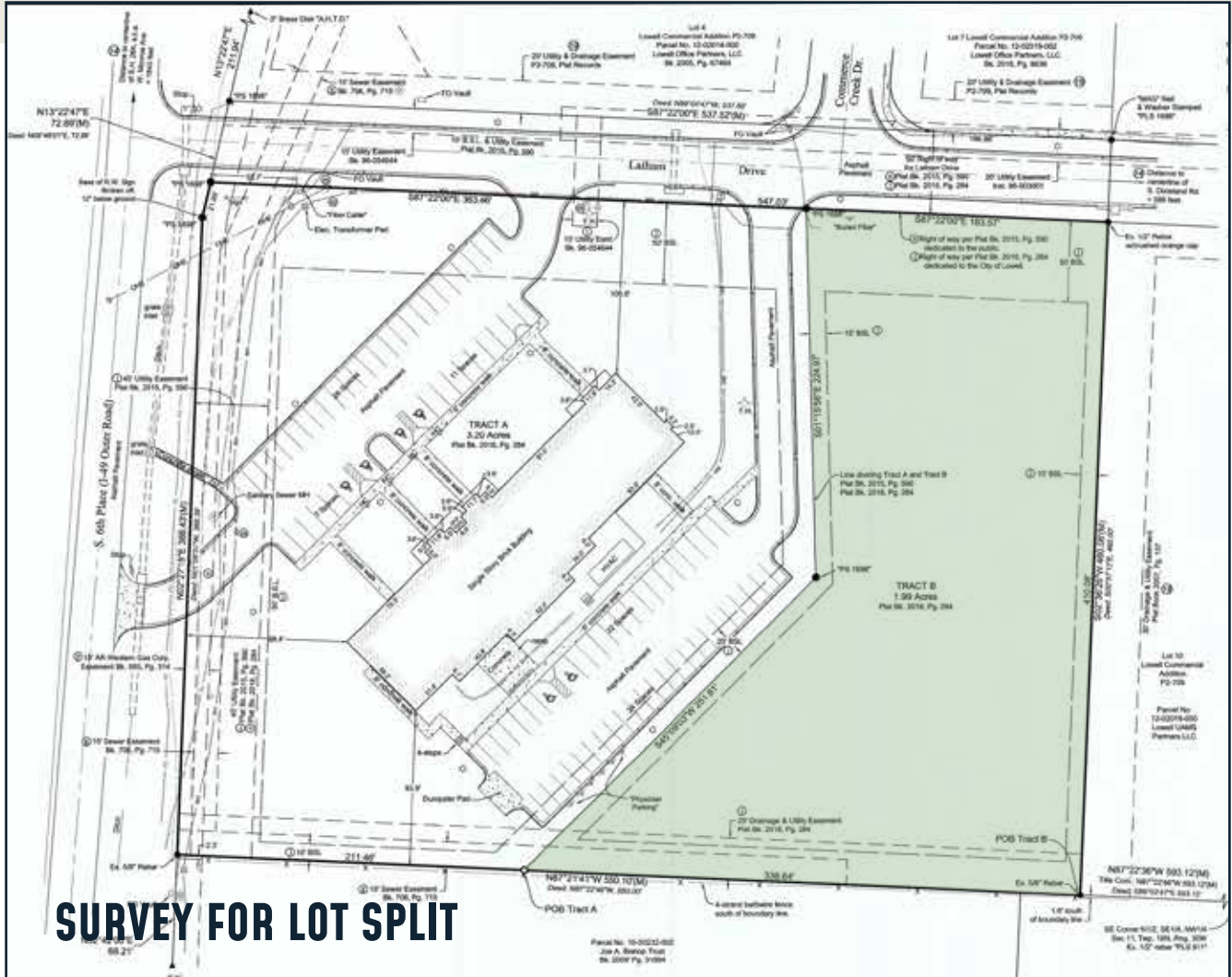
ROGERS, AR 72758

P. 479-464-4292

www.dvrxgroup.com



325 S. 6th Place, Lowell, AR (Tract B, S. 6th Place & Latham)



PAT MORRISON

P. 479-464-4292

C. 479-936-4200

PatMorrison@dvrxgroup.com

5204 W. VILLAGE PKWY, SUITE 9

ROGERS, AR 72758

P. 479-464-4292

www.dvrxgroup.com



325 S. 6th Place, Lowell, AR

(Tract B, S. 6th Place & Latham)



PAT MORRISON

P. 479-464-4292

C. 479-936-4200

PatMorrison@dvrxgroup.com

5204 W. VILLAGE PKWY, SUITE 9

ROGERS, AR 72758

P. 479-464-4292

www.dvrxgroup.com