



For Lease

**FULL BUILDING
1ST FLOOR OR 2ND
FLOOR INDIVIDUALLY**

CRES
CARR REAL ESTATE SERVICES

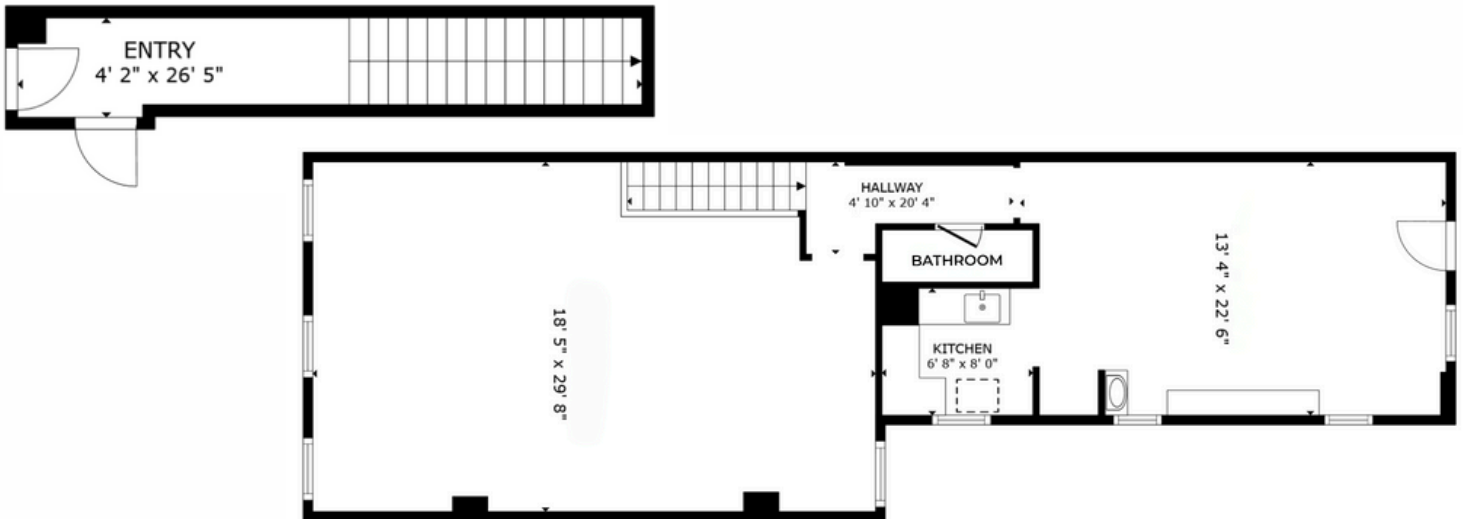
631 PENNSYLVANIA AVENUE SE WASHINGTON DC 20003

FLOOR PLANS Select the floor you wish to visit for a virtual tour.

1ST FLOOR



2ND FLOOR



Capital Hill's Eastern Market

20.67' of Frontage on Penn Ave
Zoned MU-4/CHC
Parcel ID 0874-0818

Full Building Opportunity
Approx. 3,400 SF

1st Floor

Retail/Office
Approx. 2,000 SF
Significant signage front of building
Basement storage

2nd Floor (631B)

Salon Build-Out
Approx. 1,400 SF
Potential roof top patio

CONTACT US

1455 Pennsylvania Avenue NW
#800, Washington, DC 20004

DEB ARNETT *Director of Real Estate* deb@cres.llc O:202-355-9294

TOM FUGE *Managing Director of Real Estate* tom@cres.llc C:310.943.0297



1ST FLOOR

2ND FLOOR

CONTACT US

1455 Pennsylvania Avenue NW
#800, Washington, DC 20004

DEB ARNETT *Director of Real Estate* deb@cres.llc O:202-355-9294

TOM FUGE *Managing Director of Real Estate* tom@cres.llc C:310.943.0297