



OFFICE CONDOS | **FOR SALE**

7280 W. SUNSET ROAD | LAS VEGAS, NV 89113



LOCK IN 2026 PRICING FOR A 2027 DELIVERY!

Ryan Martin, SIOR, CCIM
Senior Vice President
Lic. BS.048284
+1 702 630 2671
ryan.martin@cbre.com

Tonya Gottesman
Vice President
Lic. S.0189043
+1 310 612 3592
tonya.gottesman@cbre.com

CBRE

DEVELOPED BY:
 **INVESTMENT EQUITY LLC**



table of contents

03

executive summary

05

project highlights

06

area amenities

07

demographic profile

08

site plan

09

floor plans

12

development team

executive summary



Location

7280 W. Sunset Road



APN

163-34-801-013



SUBMARKET

Southwest



FLOORS

3-Story Building



GROSS SQUARE FEET

41,207



ZONING

BE (Business Employment)



ESTIMATED COMPLETION

Q4 2026 / Q1 2027



PARKING RATIO

±4.4 per 1,000 NSF



PRICE PER GSF

\$425



UNIT SIZE

1st Floor: 2,670 GSF up to 11,466 GSF
2nd Floor: 7,372 GSF up to 14,871 GSF
3rd Floor: 14,870 GSF

SCCC

SUNSET CANYON CORPORATE CENTER

buyer's benefits

Asset Accumulation

Build equity & increase your net worth immediately

Significant tax advantages

Leverage depreciation & appreciation to reduce your liabilities

Enhance Your Brand

Design & customize your office to meet your specific business & brand needs

Retirement Cash-Flow Plan

Sell your business to include a long-term lease

Improve Your Bottom Line

Decrease your occupancy costs. Most often the mortgage payment is less than a lease payment -even in the first year

Strategic Growth

Purchase anticipated need & lease it out until you are ready to expand

Stabilize Your Occupancy Costs

Forget about expected annual rent increases





project highlights

Prime Central Location

One of the fastest growing areas in the Las Vegas Valley (Southwest submarket), it is the most desirable areas as it sits between Buffalo Dr. & Rainbow Blvd.

Nearby Amenities

Large variety of amenities in close proximity to Building, including the Bend & UnCommons development(s). Also nearby are QSR, shopping, goods & services, hospitals and automotive.

Owner Visibility

18 ft. pylon sign fronting Sunset Rd., offering prominent visibility. Building signage available for Buyers.

Airport Proximity

Approx. 15 minutes from Harry Reid International Airport.

Excellent Ingress & Egress

Convenient access to the I-215 Beltway; West Sunset Road via Buffalo Drive or Rainbow Blvd.

New Construction

New office construction, full floor(s) available with breathtaking views, delivered in grey-shell condition so each Buyer has the ability to customize their unit.

Ample Parking, Covered Parking Available

Parking ratio $\pm 4.4:1,000$ NSF

amenity map

MEDICAL

- 1 Health South Rehab Hospital
- 2 Southern Hills Hospital
- 3 St. Rose San Martin Hospital
- 4 Spring Valley Hospital
- 5 Kindred Care
- 6 Culinary Medical Campus
- 7 Intermountain Healthcare

RETAIL

- 8 Tropicana Beltway Retail
- 9 The Bend
- 10 IKEA
- 11 The Arroyo Market Square
- 12 Ashley Furniture
- 13 Costco

MIXED USE

- 14 The Gramercy
- 15 Uncommons
- 16 Future Lifetime Fitness
- 17 Evora

RESIDENTIAL

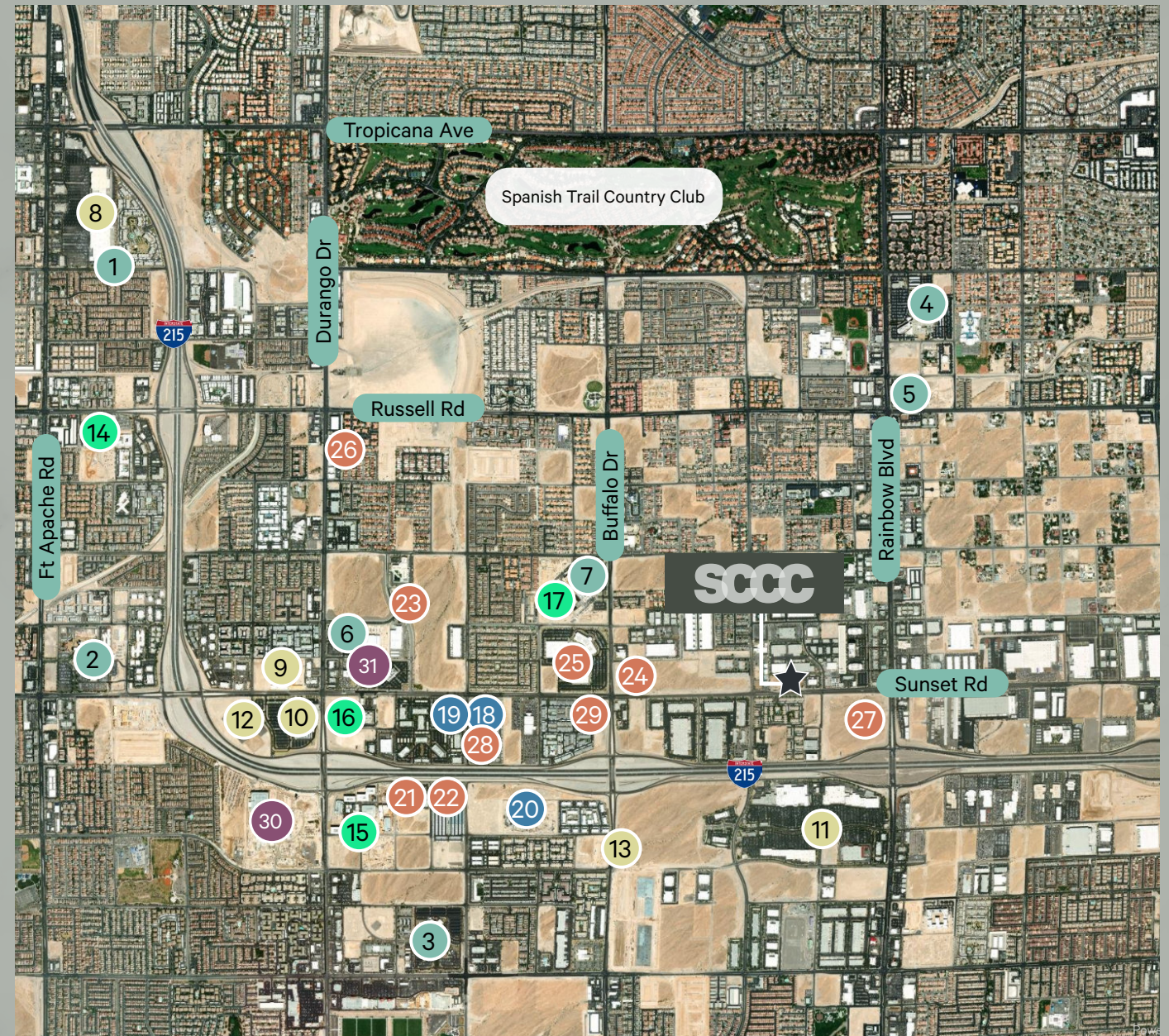
- 18 Calida Group Apartments
- 19 Picerne 250 Apartments
- 20 Blue Heron

OFFICE

- 21 The Narrative Office
- 22 Credit One Bank HQ
- 23 Harry Reid Research & Tech Park
- 24 Future Boyd Gaming HQ
- 25 IGT HQ
- 26 Canyon Ridge Business Park
- 27 Axiom (Sansone)
- 28 215 West
- 29 215 Southwest

HOTEL & CASINO

- 30 Durango Casino
- 31 Home 2 Suites



demographics

Population	1 Mile	3 Miles	5 Miles
2023 Population - Current Year Estimate	10,531	163,283	364,479
2028 Population - Five Year Projection	13,186	174,754	380,648
2020-2023 Annual Population Growth Rate	3.84%	2.00%	1.70%
2023-2028 Annual Population Growth Rate	4.60%	1.37%	0.87%

Household Income			
2023 Average Household Income	\$90,256	\$103,488	\$103,844
2028 Average Household Income	\$107,065	\$121,561	\$121,860
2020-2023 Annual Population Growth Rate	3.84%	2.00%	1.70%
2023-2028 Annual Population Growth Rate	4.60%	1.37%	0.87%

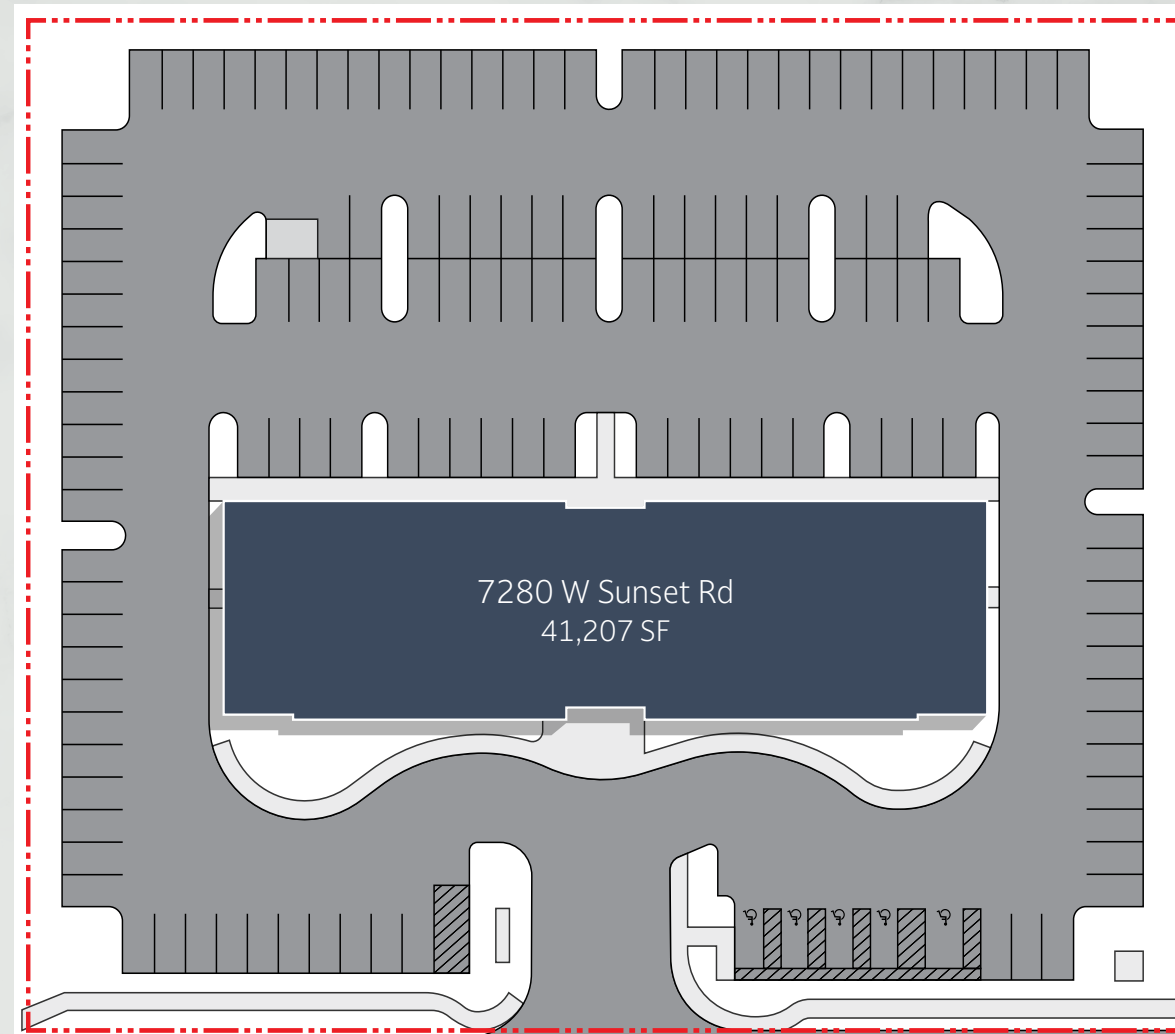
Education			
Bachelor's Degree or Higher	3,369	40,322	87,453

Place of Work			
2023 Businesses	671	4,869	13,533
2023 Employees	11,913	59,073	170,738



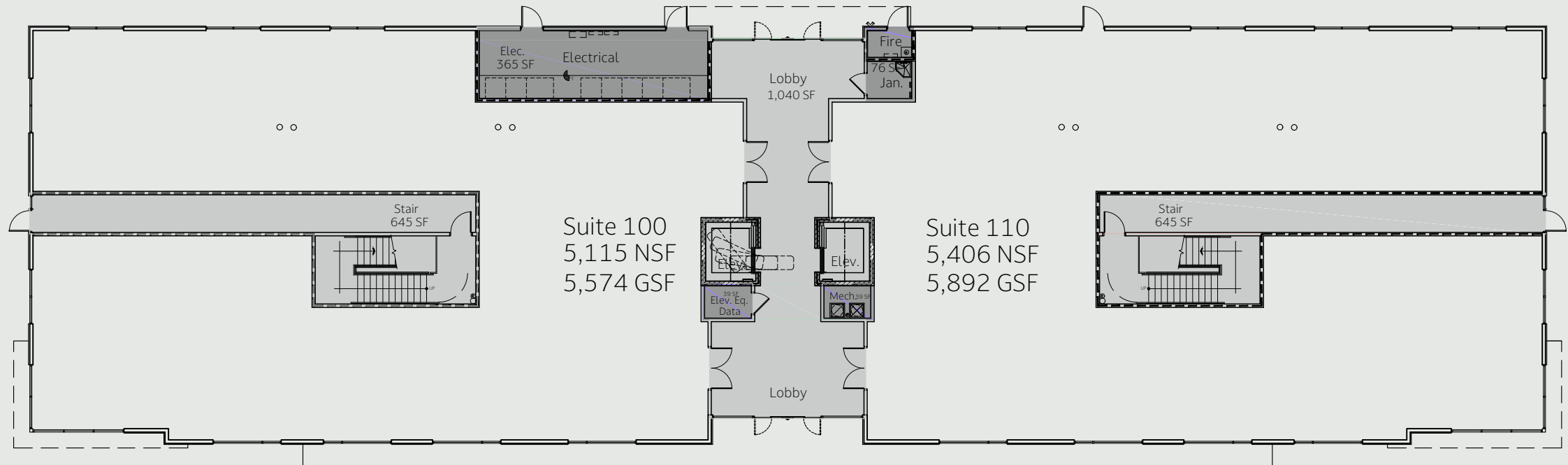
site plan

3-STORY OFFICE
41,207 GSF



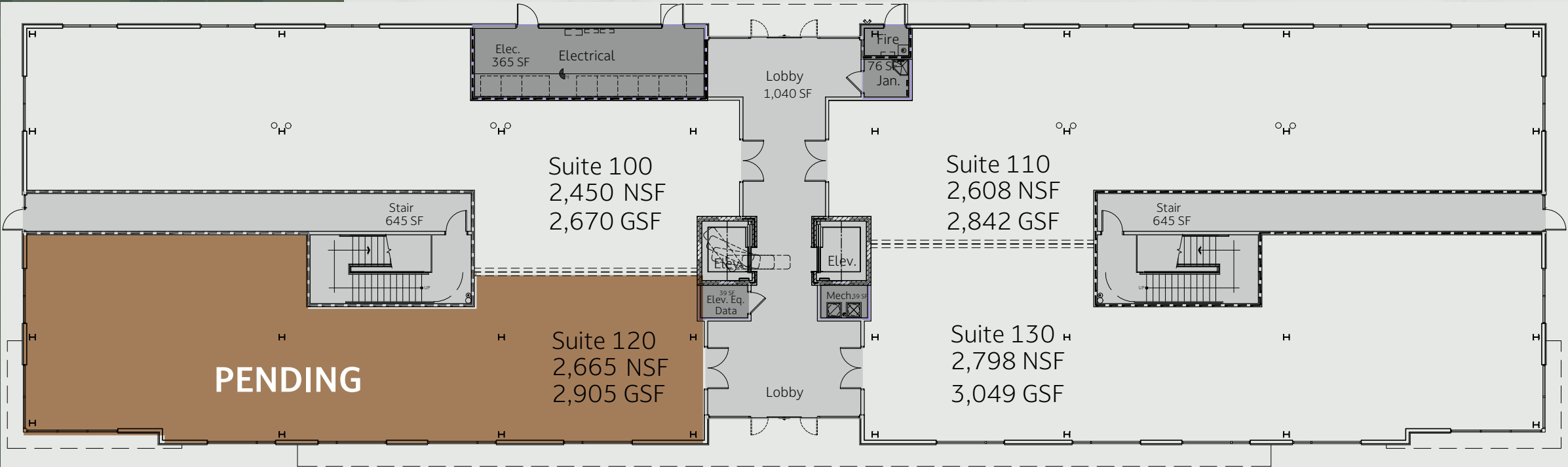
W SUNSET RD

floor plan



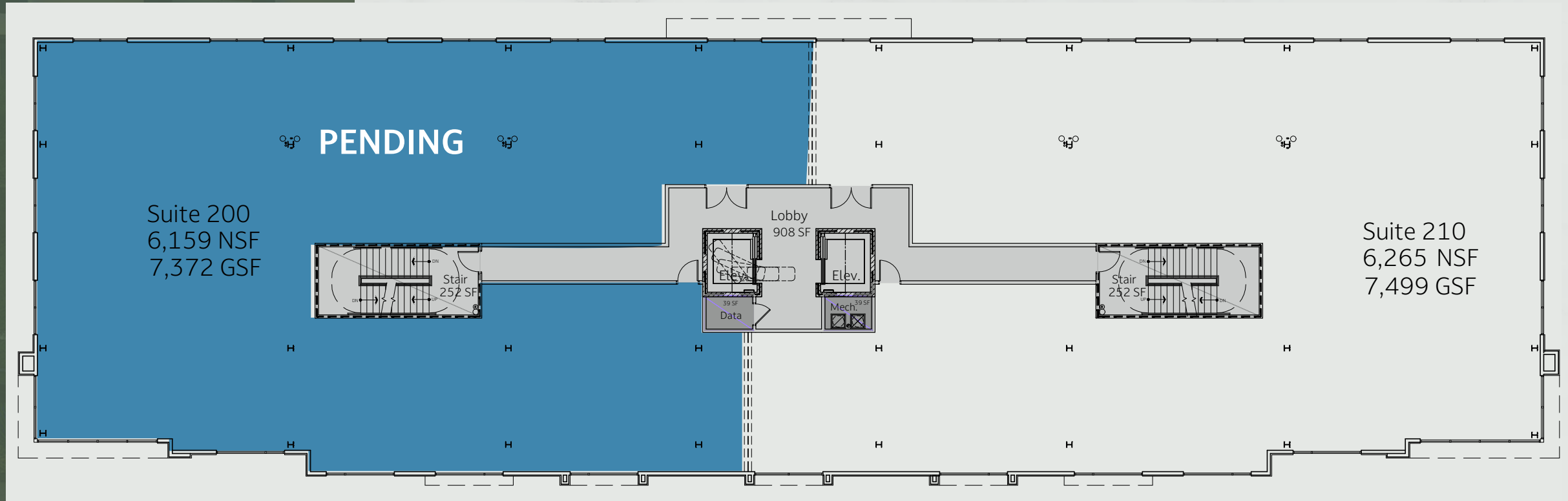
LEVEL 1
2 UNIT OPTION

floor plan



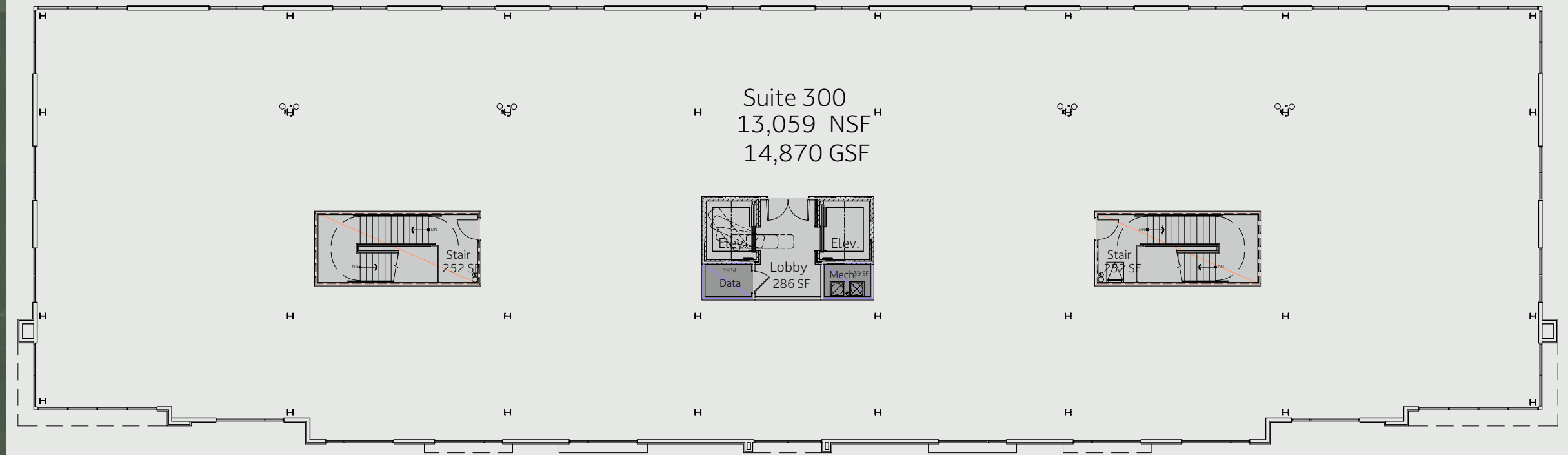
LEVEL 1
4 UNIT OPTION

floor plan



LEVEL 2

floor plan



LEVEL 3



development team

David Inman has resided in Las Vegas since 1970. In 1984 Mr. Inman founded **Investment Equity, LLC** and began his career in commercial real estate development. He has developed ±4,000,000 square feet of commercial properties in both Las Vegas, NV and Phoenix, AZ which include a wide range of projects such as mixed use commercial, retail centers, finished & gray shell office buildings, industrial parks, apartment complexes and residential subdivisions. As a commercial developer he acquired, planned, designed and developed each of the properties to include, working with all third party consultants, governmental agencies, on/off site improvements, shell construction and tenant improvements. David holds the prestigious Certified Commercial Investment Member (CCIM) designation as a licensed real estate agent.



Architects

Avaruus Studios, Inc. is a Las Vegas Valley based architecture, planning & project management firm specializing in hospitality, commercial and retail projects. As a LEED accredited professional firm, ASI has the tools to provide sustainable design for any project. Whether a custom residence, a tenant improvement, or a stand-alone building. The principals have over 30 years of experience in their field and have developed over 1,000,000 square feet of commercial development with this developer.

Contractor

Founded in 1991, Bentar Development, Inc. is a well-established and respected design/build general contractor and professional manager of construction services. The award-winning company is owned by long-time Nevada resident, Amador “Chi Chi” Bengochea. Bentar is licensed and bonded in the State of NV with an unlimited contract limit & prides itself on aggressive schedules that are unmatched by other contractors in the local industry. The company delivers a wide range of commercial, industrial, retails, casino, office & recreational projects in the Las Vegas market.

Engineering

Lochsa Engineering, founded in 1995 in Las Vegas, NV by two University of Idaho graduates, is an innovative and value driven engineering, surveying, and BIM design firm. Named after the Lochsa River in Northern Idaho, Lochsa (pronounced lock-saw) means “rough waters” in the Native American Nez Perce language. It is with that spirit that Lochsa engineering chooses to navigate towards technically challenging projects while focusing on delivering creative and effective results. The firm has the experience and expertise to develop advanced and pioneering solutions for a sizable range of construction types.

CBRE Sales Team

Ryan Martin, SIOR, CCIM, Senior Vice President: Ryan Martin is a Senior Vice President with CBRE. His expertise encompasses a broad range of office transaction types, including investment sales, tenant representation, agency landlord representation, and build-to-suit projects. He combines his 25 years of industry experience with a client-centric approach to deliver the highest possible value on every assignment. Throughout his career, Ryan has been recognized by clients and peers alike for his astute attention to detail, strong focus on customer service, extensive market knowledge and overall professionalism. His experience in the market and skilled expertise consistently produce an outstanding track record of success.

Tonya Gottesman, Vice President: With more than two decades of commercial real estate experience, Tonya Gottesman specializes in office brokerage at CBRE. Her clients benefit from her seasoned expertise across a variety of office transaction types, including investment sales, build-to-suits, tenant representation and agency landlord assignments. Tonya joined CBRE’s Los Angeles headquarters in 2000, later working with a private principal owner and serving as Vice President with MDL Group. Throughout her career, she has successfully represented both landlords and tenants, giving her a uniquely nuanced perspective that allows her to fully leverage market conditions to drive results.

Title Insurance Company

First American traces its roots to 1889, when Orange County, California. Our primary business is title insurance and settlement services, where we protect ownership rights for both the buyer and the lender—helping to facilitate the seamless exchange of property. You can think of a title search as a background check for real property. We work to uncover and resolve issues that would limit a new buyer’s right to own the property and to sell it in the future, and we insure against unknown issues or fraud that could show up later. We do this for a variety of property types including all types of residential, commercial, and industrial transactions.



Ryan Martin, SIOR, CCIM

Senior Vice President

Lic. BS.048284

+1 702 630 2671

ryan.martin@cbre.com

Tonya Gottesman

Vice President

Lic. S.0189043

+1 310 612 3592

tonya.gottesman@cbre.com

© 2025 CBRE, Inc. CBRE, Inc. All rights reserved. This information has been obtained from sources believed reliable but has not been verified for accuracy or completeness. CBRE, Inc. makes no guarantee, representation or warranty and accepts no responsibility or liability as to the accuracy, completeness, or reliability of the information contained herein. You should conduct a careful, independent investigation of the property and verify all information. Any reliance on this information is solely at your own risk. CBRE and the CBRE logo are service marks of CBRE, Inc. All other marks displayed on this document are the property of their respective owners, and the use of such logos does not imply any affiliation with or endorsement of CBRE. Photos herein are the property of their respective owners. Use of these images without the express written consent of the owner is prohibited. CMPM Sunset Canyon Corporate Center_12.8.2025 12/08/25

CBRE