



PROPERTY DESCRIPTION

+/- 14.06 Acres of land proposed for Commercial Development. Located on the the signalized Corner of Valley Dr (US Hwy 11) and Burton Gap Rd in Reece City, AL. Just west of the I59 Exit 188.

PROPERTY HIGHLIGHTS

- 14.06Ac of Land for Commercial Development
- Utilities located at property line.
- Signalized Corner
- Growth thinned/cleared recently
- Relatively flat land.

OFFERING SUMMARY

Sale Price:	\$895,000
Lot Size:	14.06 Acres

DEMOGRAPHICS	3 MILES	6 MILES	10 MILES
Total Households	2,117	16,395	35,405
Total Population	4,545	33,620	75,160
Average HH Income	\$55,552	\$36,356	\$45,465

TRISH RUSHING, CCIM

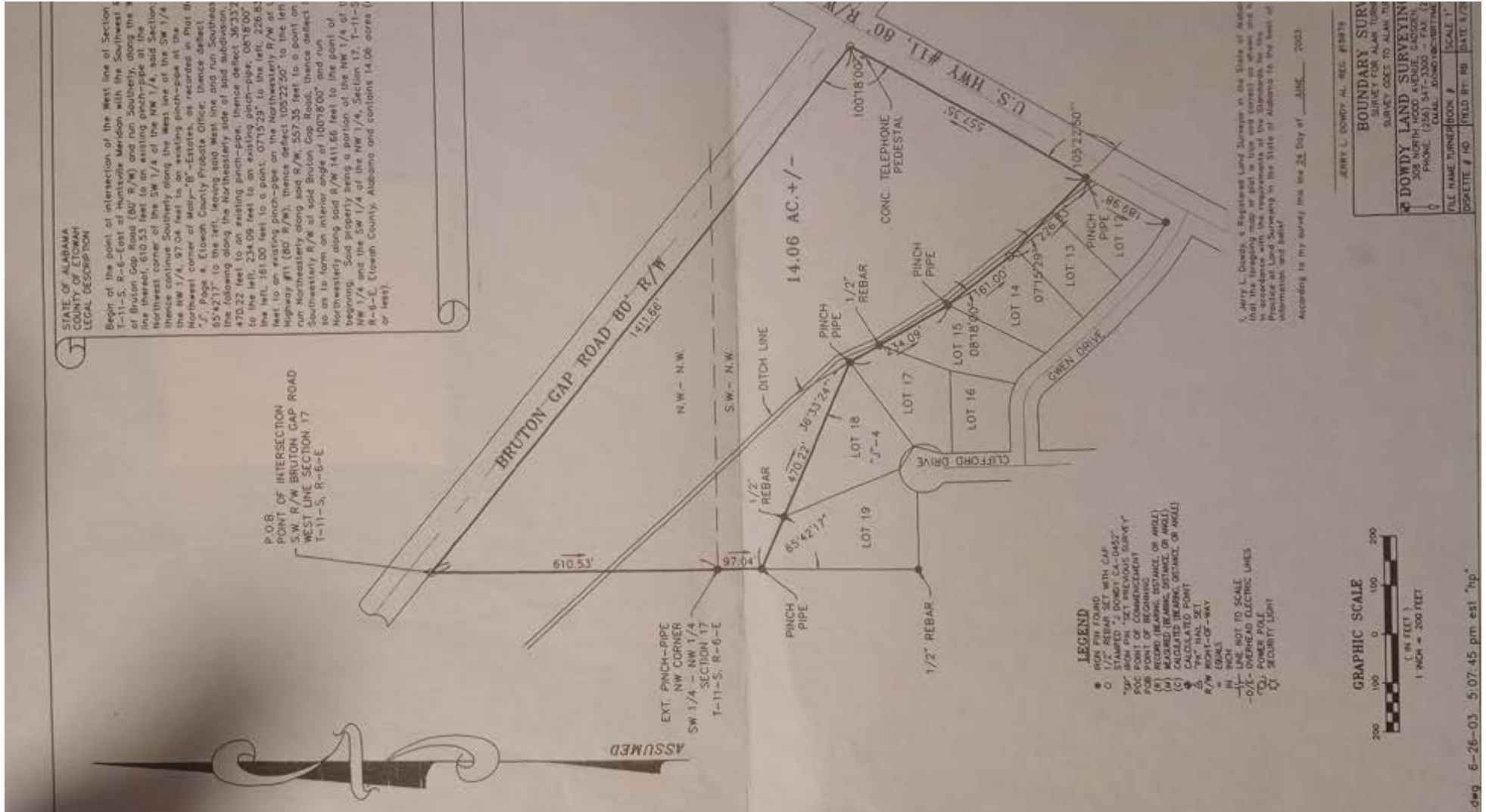
205.930.1785
trushing@redrockrg.com



TRISH RUSHING, CCIM

205.930.1785

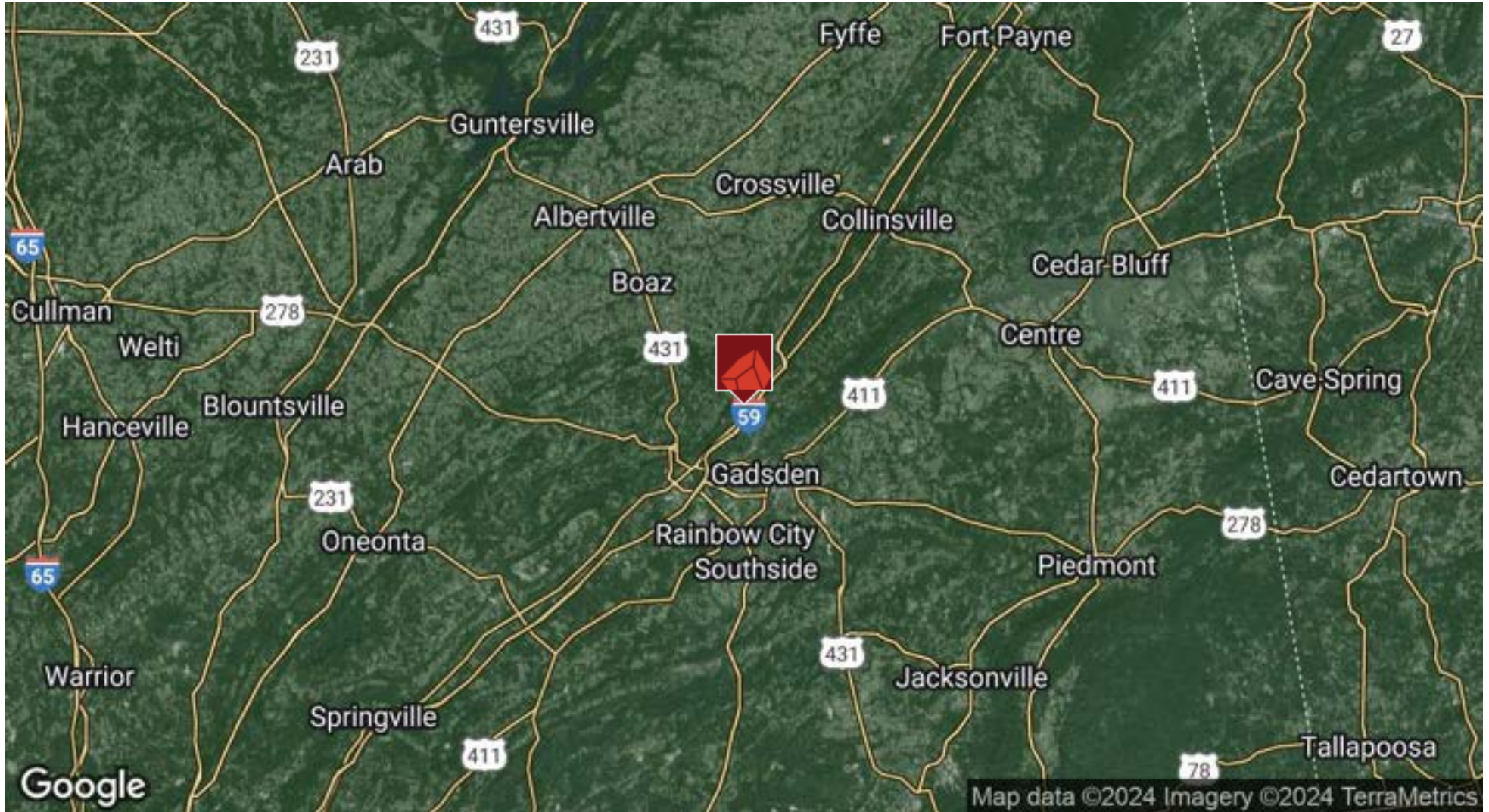
trushing@redrockrg.com



TRISH RUSHING, CCIM

205.930.1785

trushing@redrockrg.com



TRISH RUSHING, CCIM

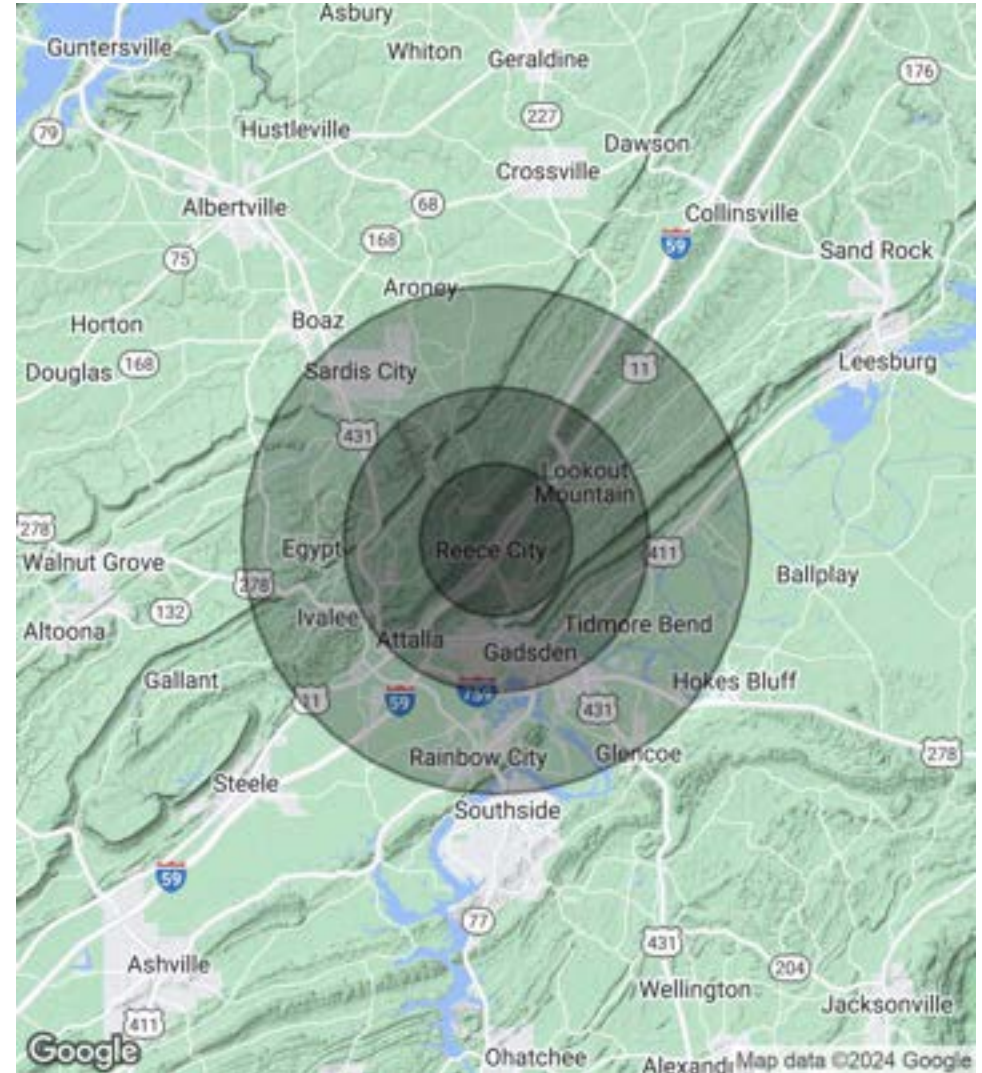
205.930.1785

trushing@redrockrg.com

POPULATION	3 MILES	6 MILES	10 MILES
Total Population	4,545	33,620	75,160
Average Age	43.6	39.2	40.3
Average Age (Male)	40.4	36.9	38.4
Average Age (Female)	46.8	41.8	42.5

HOUSEHOLDS & INCOME	3 MILES	6 MILES	10 MILES
Total Households	2,117	16,395	35,405
# of Persons per HH	2.1	2.1	2.1
Average HH Income	\$55,552	\$36,356	\$45,465
Average House Value	\$130,039	\$78,866	\$109,425

2020 American Community Survey (ACS)



TRISH RUSHING, CCIM

205.930.1785

trushing@redrockrg.com