

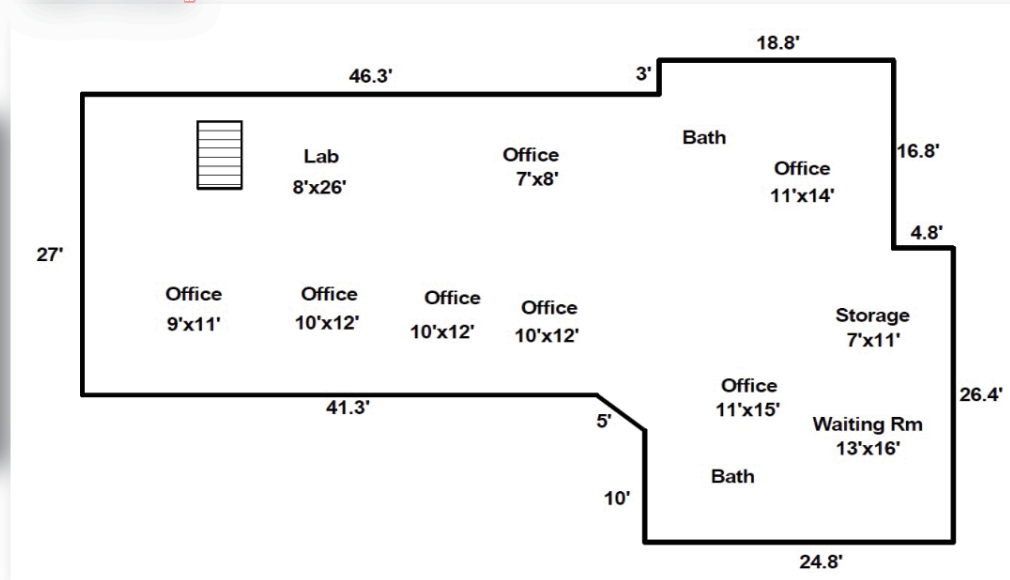
TOTAL BLDG SF: 2,955
• First Floor 2,211 SF
• Second Floor 744 SF



OFFERING PRICE: \$948,000

- This versatile building offers convenient access and potential for a wide range of office uses.
- Situated in the Murfreesboro medical district within the Rutherford County Submarket, located just minutes to Middle Tennessee State University and downtown Murfreesboro.
- Major capital improvements completed, including a new roof (Sept 2023) with 30-year shingles and multiple HVAC systems, one of which was replaced in February 2024.

FIRST FLOOR



SECOND FLOOR

