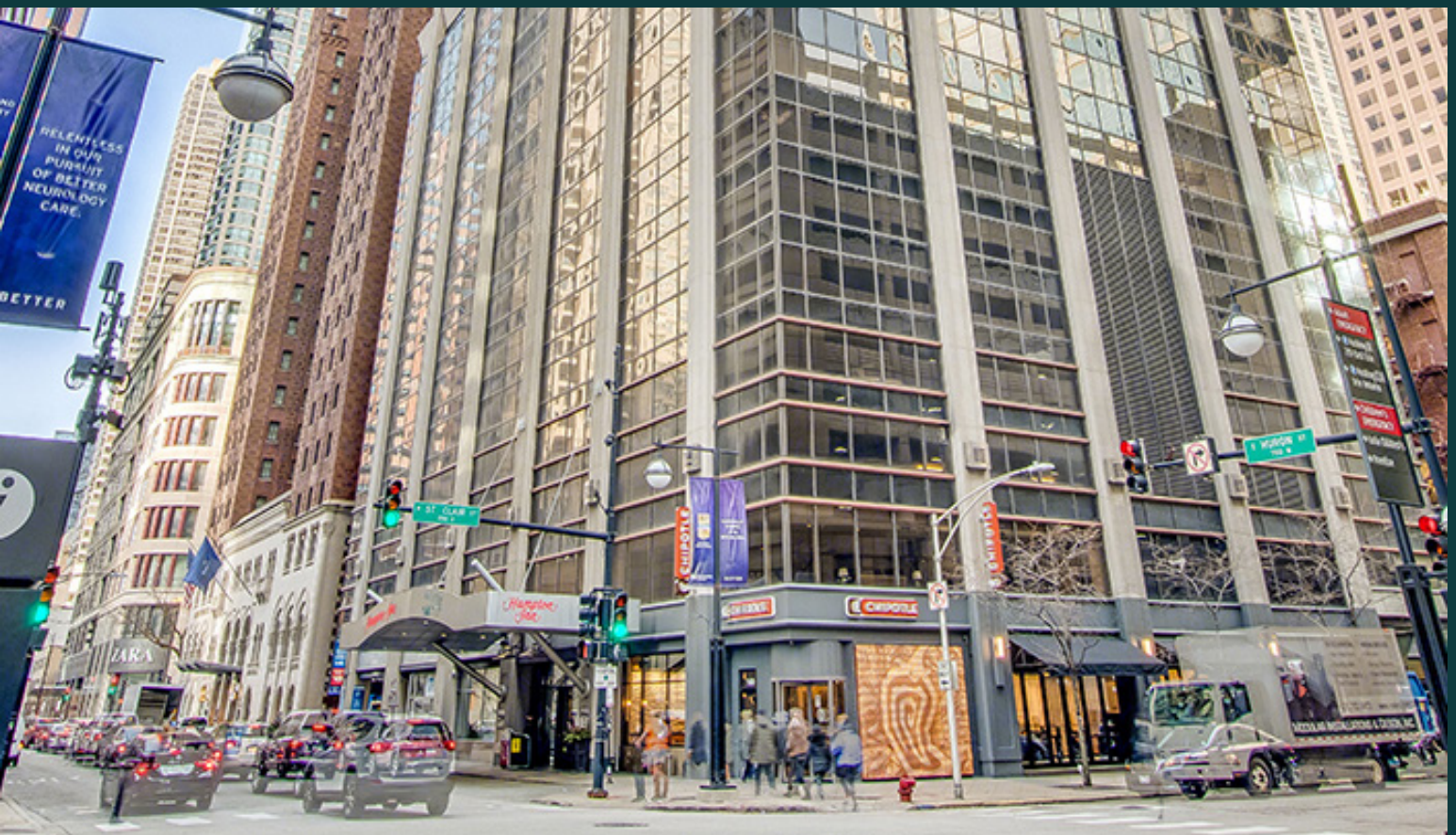


Huron Medical Office Building

150-160 E Huron Street, Chicago, IL 60611



[View Virtual Tour](#)

SIZE
92,801 RSF

PARKING RATIO
2.7 per 1,000 RSF

- 7 floors of Class A medical office space
- On-site security, on-site property manager, and views of surrounding cityscape
- Northwestern Medicine — premier anchor tenant
- Connected indoor parking for patients and staff
- Half block from Michigan Ave, one mile from Lake Shore Dr, and one mile from I-90
- Generous Tenant Improvement Allowance with flexible terms

Class A medical offices with premier tenant in the heart of Magnificent Mile.

POPULATION (5-MILE RADIUS)

768,204

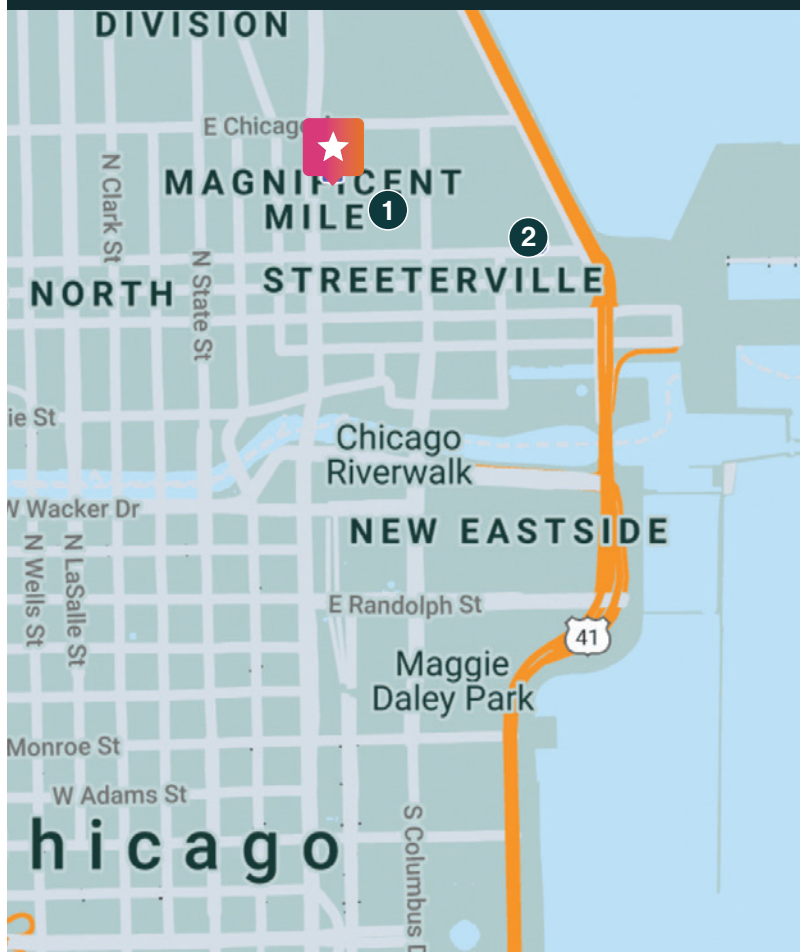
AVERAGE HOUSEHOLD INCOME (5-MILE RADIUS)

\$118,476

PERCENT OF POPULATION INSURED (5-MILE RADIUS)

84.3%

150-160 E HURON STREET, CHICAGO, IL 60611



NEARBY HOSPITALS

	DISTANCE	DRIVE TIME
1. Northwestern Memorial Hospital	0.1mi	1 min
2. Northwestern Medical Center	0.9mi	6 min

SURROUNDING POINTS OF INTEREST

- Walgreens Pharmacy
- Whole Foods Market
- Water Tower Place
- The Magnificent Mile
- Hampton Inn
- Gold Coast Fitness Club
- Starbucks Reserve Roastery
- Kafenio Lavazza
- Corner Bakery Café
- Beatrix Market
- Northwestern University
- Loyola University

LINDSAY KNOLL, SVP | LEASING

217.201.6601 cell
lknoll@remedymed.com

DANNY BERLIANT, SENIOR ASSOCIATE | LEASING

847.682.3221 cell
dberliant@remedymed.com

