

STORM SEWER SCHEDULE																		
NO.	STATION	OFFSET	ROADWAY	STRUCTURE TYPE		DIAM.	FRAME	RIM ELEV.	NO.	INVERT IN	INVERT IN	INVERT IN	INVERT OUT	LENGTH (LIN FT)	SEWER TYPE	DIAM. (IN)	SLOPE	NO.
				MH	CB													
1	49.64	48.00'L	DRAUDEN ROAD	A		4"	220-SOLID	623.90	1				E 698.84	24	RCCP, T-2, CLASS II	2	0.50%	1
2	046.35	48.00'L	DRAUDEN ROAD	A		4"	220-SOLID	623.70	2		N 698.84		W 698.84	80	RCCP, T-2, CLASS II	2	0.50%	2
3	938.76	48.00'L	DRAUDEN ROAD	A		4"	220-SOLID	623.00	3				W 693.1	97	RCCP, T-2, CLASS II	2	0.25%	3
4	933.07	28.50'L	ACCESS	A		6"	220-M2	625.30	4			NW 620.9	E 620.08	305	RCCP, T-2, CLASS II	2	0.25%	4
5	344.52	43.75'L	ACCESS		X	2"	GRATING	N/A	5			SE 620.30	FES(0)		RCCP, T-2, CLASS II	2	0.75%	5
6	N/A	N/A	DETENTION BASIN		X	24"	GRATING	N/A	6			SW 620.60	FES(0)+09		RCCP, T-2, CLASS II	24	0.23%	6
7	N/A	N/A	DETENTION BASIN		X	24"	GRATING	N/A	7			NE 620.30	6(FES)		RCCP, T-2, CLASS II	24	0.23%	7
8	** STRUCTURE NUMBER NOT USED **																	
9	** STRUCTURE NUMBER NOT USED **																	
10	500.00	42.50'L	ACCESS		X	8"	GRATING	N/A	10			NW 620.30	6(FES)		RCCP, T-2, CLASS II	8	0.36%	10
11	500.00	5.50'L	ACCESS	A		4"	72-M2	625.44	11			SE 620.50	NW 620.40	22(FES)	RCCP, T-2, CLASS II	8	0.36%	11
12	500.00	5.50'R	ACCESS	A		4"	72-M2	625.44	12			S 620.67	NW 620.57	23	RCCP, T-2, CLASS II	8	0.30%	12
13	472.27	33.50'R	ACCESS	A		4"	1050-SOLID	626.00	13			N 620.75	26	RCCP, T-2, CLASS II	8	0.30%	13	
14	342.63	72.97'L	ACCESS		X	24"	GRATING	N/A	14			N 620.30	6(FES)		RCCP, T-2, CLASS II	21	0.30%	14
15	343.54	72.49'L	ACCESS	A		4"	1020-SOLID	625.30	15			E 620.45	N 620.35	12(FES)	RCCP, T-2, CLASS II	21	0.30%	15
16	342.84	28.50'L	ACCESS	A		4"	1020-M2	625.30	16			SE 620.67	W 620.57	40	RCCP, T-2, CLASS II	21	0.30%	16
17	340.00	5.50'L	ACCESS	A		4"	72-M2	625.44	17			E 620.65	NW 620.75	24	RCCP, T-2, CLASS II	21	0.30%	17
18	340.00	5.50'R	ACCESS	A		4"	72-M2	625.44	18			E 621.02	W 620.92	23	RCCP, T-2, CLASS II	21	0.30%	18
19	3405.07	33.50'R	ACCESS	A		4"	1050-SOLID	625.90	19			W 621.07	17	RCCP, T-2, CLASS II	21	0.30%	19	
20	549.65	38.77'L	THEODORE STREET	** EXISTING STRUCTURE **			N/A	623.77	20	SW 69.83	W 69.37	NE 69.27	E 69.27P	326	RCCP, T-2, CLASS II	2	0.9%	20
21	149.64	2174'L	DRAUDEN ROAD	** EXISTING STRUCTURE **			N/A	622.02	21	W 68.72P	W 69.27	E 68.62	43	EXISTING	2	0.79%	21	

*P DENOTES PROPOSED PIPE INVERT

LEGEND

XXXLX	PROPOSED HIGH POINT ELEVATION	→	PROPOSED STORM SEWER
---	PROPOSED LOW POINT ELEVATION	⊙	STORM SEWER STRUCTURE NUMBER
→	PROPOSED FLOW DIRECTION	●	PROPOSED STORM SEWER MANHOLE
△	PROPOSED 100 YEAR FLOOD ROUTING	●	PROPOSED STORM SEWER CATCH BASIN
XXX.X	PROPOSED GRADE ELEVATION	■	PROPOSED STORM SEWER INLET
XXX.X	PROPOSED ROADWAY C/L ELEVATION	▲	PROPOSED STORM SEWER FLARED END SECTION
-XXX	EXISTING CONTOUR LINE	-XXX	EXISTING CONTOUR LINE
-XXX	PROPOSED CONTOUR LINE	▨	PROPOSED DEPRESSED SIDEWALK
⊙	STORM SEWER STRUCTURE NUMBER (SEE SHEET 4 FOR INFORMATION)		

EXISTING LEGEND PROPOSED

→	STORM SEWER	→	STORM SEWER
→	SANITARY SEWER	→	SANITARY SEWER
—	WATER MAIN	—	WATER MAIN
⊙	FIRE HYDRANT	▲	FLARED END SECTION
⊗	VALVE VAULT	⊗	SANITARY SEWER MANHOLE
⊕	VALVE BOX	⊕	STREET LIGHT
⊙	STORM SEWER MANHOLE	●	CATCH BASIN
○	CATCH BASIN	●	INLET
□	INLET	■	FLARED END SECTION
▲	FLARED END SECTION	▲	SANITARY SEWER MANHOLE
⊙	SANITARY SEWER MANHOLE	⊙	STREET LIGHT
×	STREET LIGHT	×	STREET LIGHT

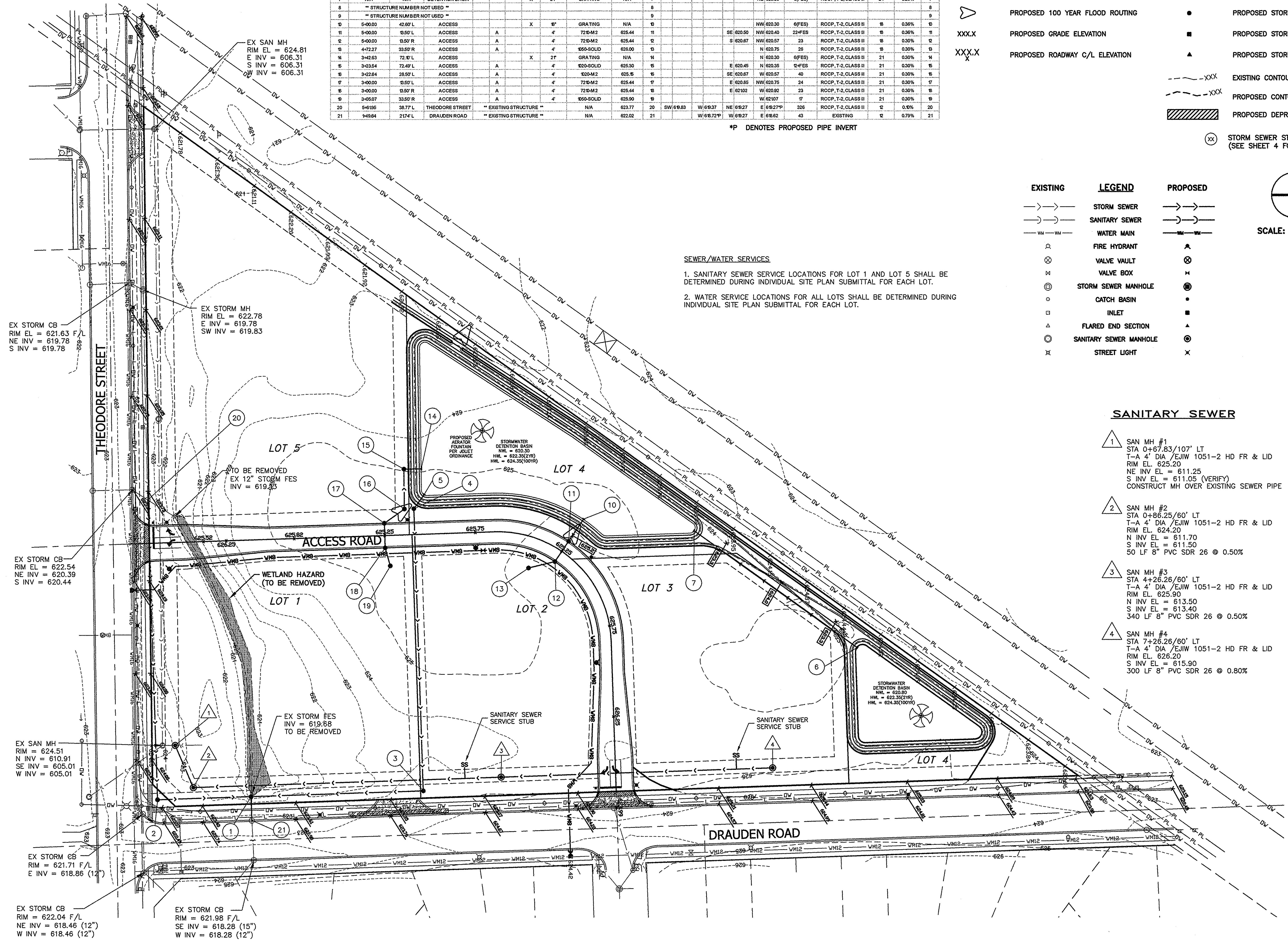
SCALE: 1" = 50'

SEWER/WATER SERVICES

1. SANITARY SEWER SERVICE LOCATIONS FOR LOT 1 AND LOT 5 SHALL BE DETERMINED DURING INDIVIDUAL SITE PLAN SUBMITTAL FOR EACH LOT.

2. WATER SERVICE LOCATIONS FOR ALL LOTS SHALL BE DETERMINED DURING INDIVIDUAL SITE PLAN SUBMITTAL FOR EACH LOT.

- ### SANITARY SEWER
- SAN MH #1
STA 0+67.83/107' LT
T-A 4' DIA /EJW 1051-2 HD FR & LID
RIM EL. 625.20
NE INV EL = 611.25
S INV EL = 611.05 (VERIFY)
CONSTRUCT MH OVER EXISTING SEWER PIPE
 - SAN MH #2
STA 0+86.25/60' LT
T-A 4' DIA /EJW 1051-2 HD FR & LID
RIM EL. 624.20
N INV EL = 611.70
S INV EL = 611.50
50 LF 8" PVC SDR 26 @ 0.50%
 - SAN MH #3
STA 4+26.26/60' LT
T-A 4' DIA /EJW 1051-2 HD FR & LID
RIM EL. 625.90
N INV EL = 613.50
S INV EL = 613.40
340 LF 8" PVC SDR 26 @ 0.50%
 - SAN MH #4
STA 7+26.26/60' LT
T-A 4' DIA /EJW 1051-2 HD FR & LID
RIM EL. 626.20
S INV EL = 615.90
300 LF 8" PVC SDR 26 @ 0.80%



PER CITY REVIEW
 AUS
 PER CITY REVIEW
 AUS
 DATE: 04/17/09
 03/13/09
 JOB # 17975
 DATE: 15 FEB 09
 DRAWN BY: JC
 CHECKED BY: A.A.S.
GRADING & UTILITY PLAN
THEODORE COMMONS SUBD
JOLIET, ILLINOIS
GEOTECH INC.
 CONSULTING ENGINEERS - LAND SURVEYORS
 1207 CEDARWOOD DRIVE CREST HILL, ILLINOIS 60403 815/730-1010
4
 G.N. 17975