

Warehouse Condo for Sale

EXCLUSIVELY OFFERED BY
WILSON HUTCHISON REALTY, LLC



**5720 North Commerce
Court, Unit 9
Alpharetta, GA 30004
Forsyth County**

**Unit is completely
built out including
upstairs offices and
custom kitchen**

**For Sale asking
\$449,000.00**



Tom Wilson
404-372-5547 – Cell
Or
tom@wilsonhutch.com

Industrial / Personal Use • Warehouse / Manufacturing / Hobby

The information has been secured from sources we believe to be reliable, but we make no representations or warranties, expressed or implied, as to the accuracy of the information.

5755 North Point Parkway, Suite 44, Alpharetta, GA 30022 Tel: 770-242-7917 Fax: 678-325-4824 | www.wilsonhutch.com

Warehouse Condo for Sale

EXCLUSIVELY OFFERED BY
WILSON HUTCHISON REALTY, LLC



The information has been secured from sources we believe to be reliable, but we make no representations or warranties, expressed or implied, as to the accuracy of the information.

5755 North Point Parkway, Suite 44, Alpharetta, GA 30022 Tel: 770-242-7917 Fax: 678-325-4824 | www.wilsonhutch.com

**5720 North Commerce Court, Unit 9
Alpharetta, GA 30004
Forsyth County**

**EXCLUSIVELY OFFERED BY
WILSON HUTCHISON REALTY, LLC**



**WILSON HUTCHISON
REALTY, LLC**

**New mixed use project
zoned M1 Located in
Highland Ridge
Commercial Park off of
Atlanta Highway just
north of Francis Rd
minutes from Route 400**



Vicinity Map

**Tom Wilson
404-372-5547 – Cell
Or
770-242-7917 x 1**

The information has been secured from sources we believe to be reliable, but we make no representations or warranties, expressed or implied, as to the accuracy of the information.

5755 North Point Parkway, Suite 44, Alpharetta, GA 30022 Tel: 770-242-7917 Fax: 678-325-4824 | www.wilsonhutch.com

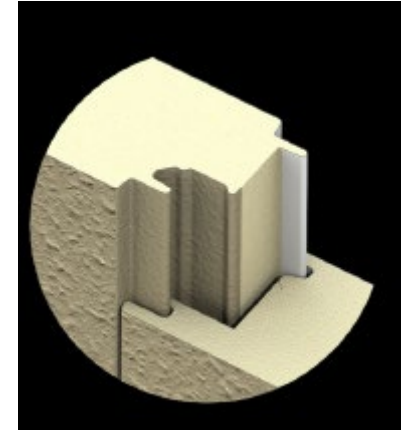
**5720 North Commerce Court, Unit 9
Alpharetta, GA 30004
Forsyth County**

**EXCLUSIVELY OFFERED BY
WILSON HUTCHISON REALTY, LLC**



**WILSON HUTCHISON
REALTY, LLC**

- **Unit is 1,250 square feet (25' wide by 50' deep)**
- **Tall ceilings for lofts, shelves and lifts**
- **14' tall insulated doors**
- **Large isles and common parking**
- **3 phase power**
- **HVAC**
- **Half bath with hot water heater**
- **Sprinkled**
- **Superior steel construction and insulation using Metl-Span 2" thick Tuff Wall (example pictured)**
- **Unit if fully built out**



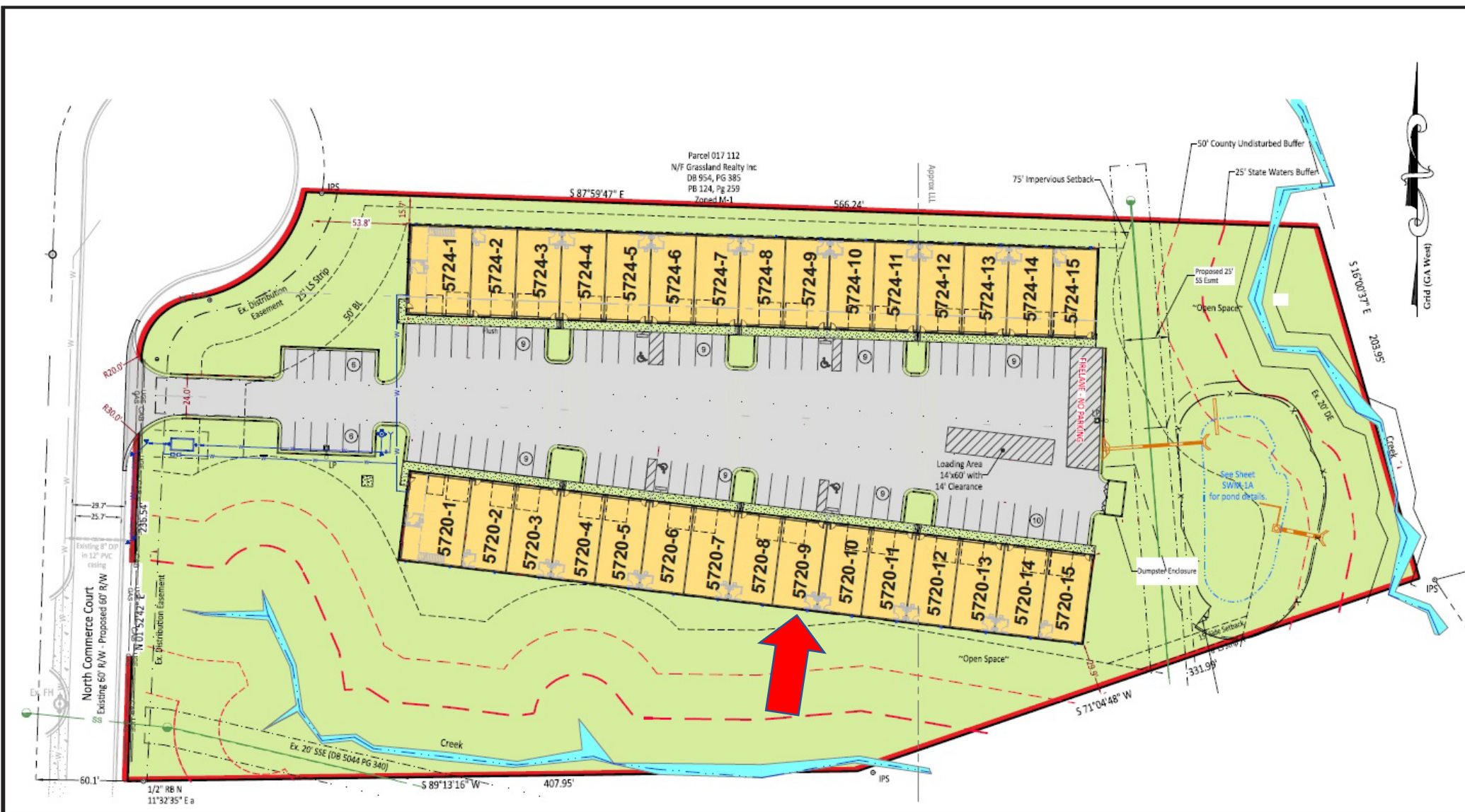
**Tom Wilson
404-372-5547 – Cell
Or
770-242-7917 x 1**

The information has been secured from sources we believe to be reliable, but we make no representations or warranties, expressed or implied, as to the accuracy of the information.

5755 North Point Parkway, Suite 44, Alpharetta, GA 30022 Tel: 770-242-7917 Fax: 678-325-4824 | www.wilsonhutch.com

5720 North Commerce Court, Unit 9 Alpharetta, GA 30004 Forsyth County

EXCLUSIVELY OFFERED BY
WILSON HUTCHISON REALTY, LLC



The information has been secured from sources we believe to be reliable, but we make no representations or warranties, expressed or implied, as to the accuracy of the information.

5755 North Point Parkway, Suite 44, Alpharetta, GA 30022 Tel: 770-242-7917 Fax: 678-325-4824 | www.wilsonhutch.com