

185 N Barrington Rd.

Schaumburg, IL

**2ND GENERATION DENTAL
OFFICE FOR LEASE**

2,660 square-foot former dental office available for lease immediately! This corner unit has 6 fully plumbed Operatories, ADA Compliant Restrooms, Lab Space, and spacious Waiting/Reception Area. Outlot opportunity facing Barrington road and anchored by Kohl's. Barrington Road sees 31k vehicles daily. Parking lot newly striped and sealed. Very heavy retail Intersection including Kohl's, Home Depot, Target, Jewel, Starbucks, Chipotle, Chick-fil-A and many other national brands. Parking and signage is abundant, and there are multiple points of access to the building off of Barrington Rd.



Lease Rate:
\$25.00 NNN

Available SF:
2,600 SF

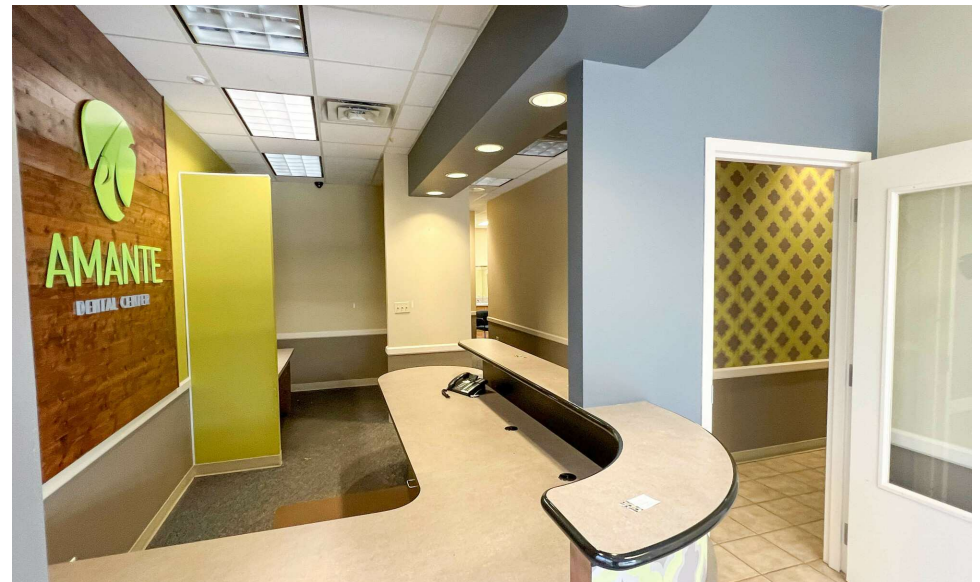
Equipment:
Some

Operatories:
6

Lease Term:
Negotiable

185 N Barrington Rd.
Schaumburg, IL

ADDITIONAL PHOTOS



185 N Barrington Rd.

Schaumburg, IL

Population

1 MILE

18,550

TOTAL POPULATION

115,889 | 221,066
3 MILES | 5 MILES

41

AVERAGE AGE

40 | 41
3 MILES | 5 MILES

Households and Income

1 MILE

7,089

TOTAL HOUSEHOLDS

40,957 | 79,098
3 MILES | 5 MILES

2.6

OF PERSONS PER HH

2.8 | 2.8
3 MILES | 5 MILES

1 Mile

39

AVERAGE AGE (MALE)

39 | 39
3 MILES | 5 MILES

42

AVERAGE AGE (FEMALE)

41 | 41
3 MILES | 5 MILES

1 Mile

\$104,387

AVERAGE HH INCOME

\$108,642 | \$120,551
3 MILES | 5 MILES

\$297,761

AVERAGE HOUSE VALUE

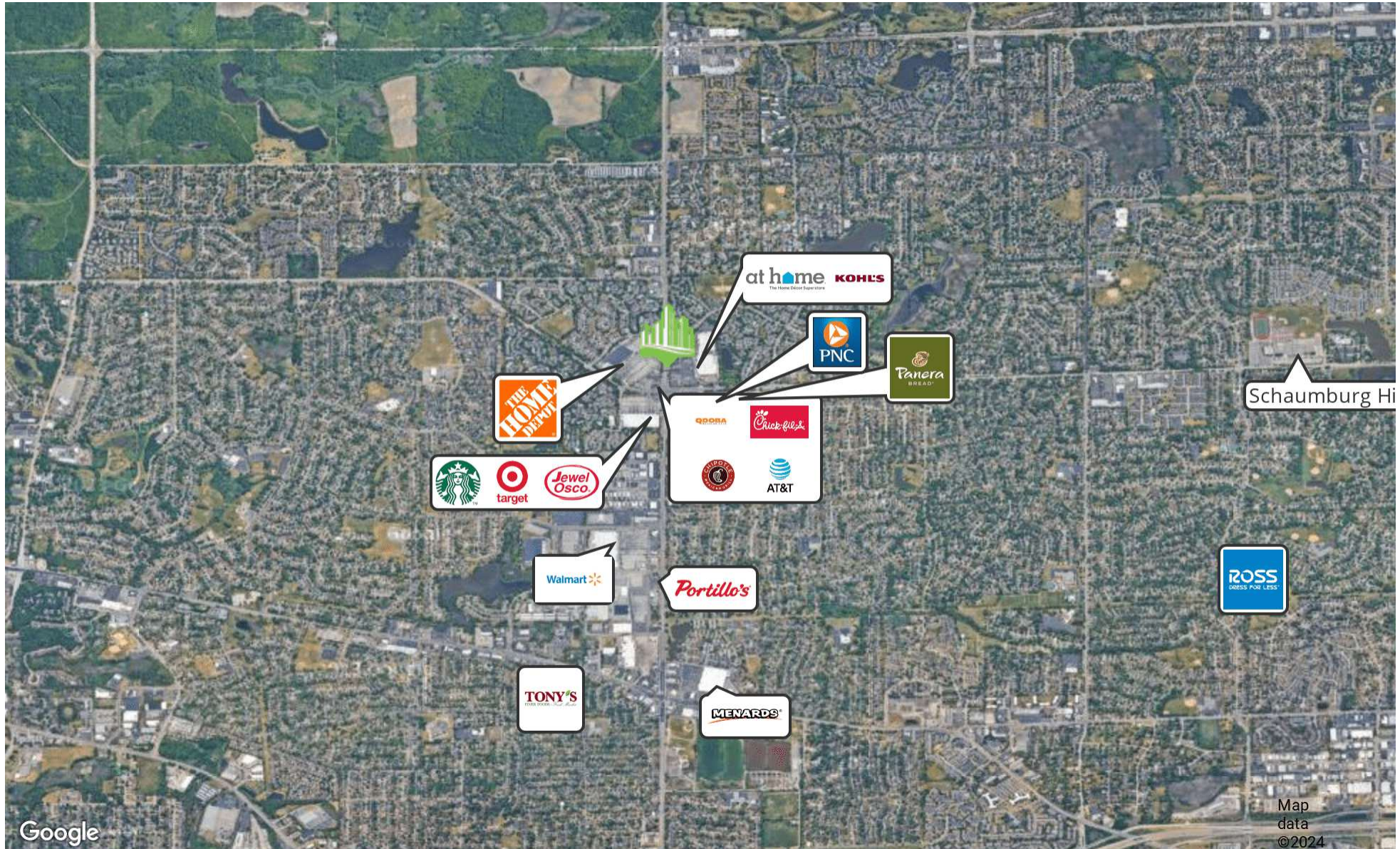
\$302,708 | \$338,269
3 MILES | 5 MILES

* Demographic data derived from 2020 ACS - US Census



185 N Barrington Rd. Schaumburg, IL

RETAILER MAP



Google

Map
data
©2024