



Office Space In Westbury Park

12 Arley Way, Ste 201
Bluffton, South Carolina 29910

Property Highlights

- Class "A" Office for Lease in Westbury Business Park in Bluffton, SC.
- The layout for Suite 202 consists of; reception, 4 offices, large open staff work area, conference room and large copier /work room.
- Common area consists of restrooms, lobby, elevator, stairways, and shared break room.
- Other tenants in the building include Fraser Construction, St Joseph's/Candler Hospital System & Dynamic Dentistry.

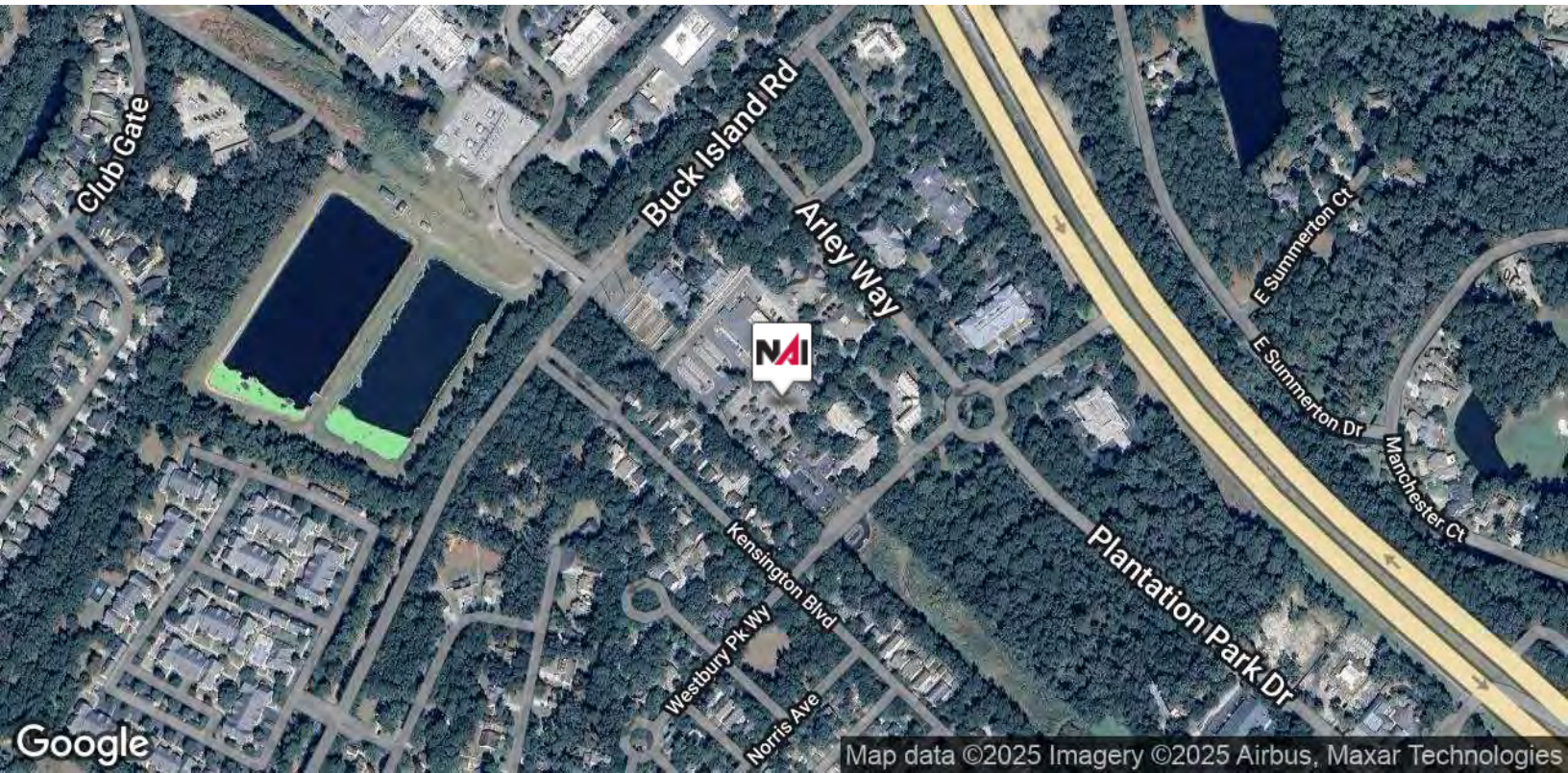
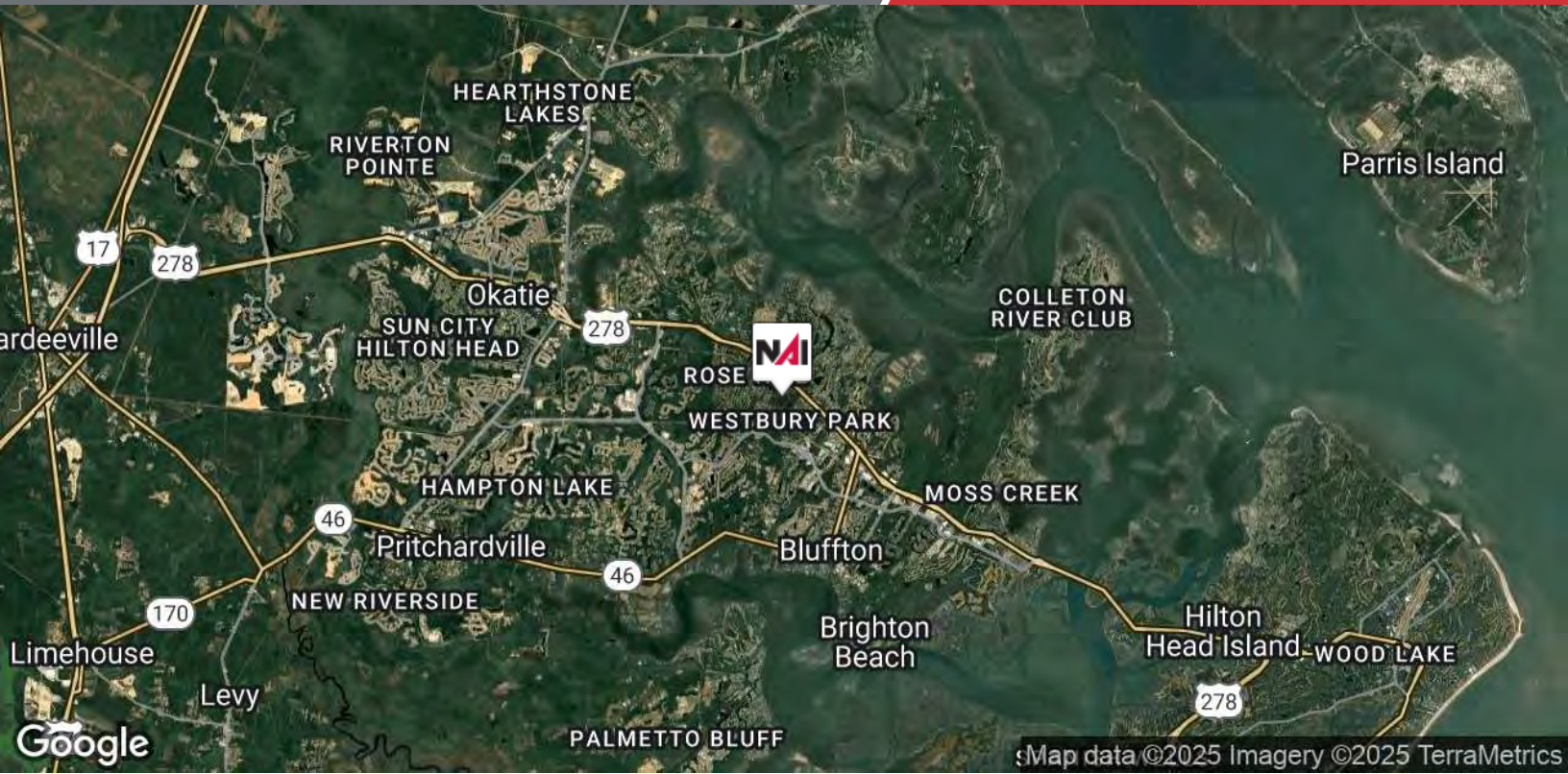
Offering Summary

| | |
|--------------------------|---------------|
| Suite: | 201 |
| Usable Square Footage: | 2,438 +/- USF |
| Rentable Square Footage: | 2,930 +/- RSF |
| Base Rent: | \$27.00 PRSF |
| NNN: | \$7.03 PRSF |
| Annual Increases: | 3% |
| Lease Term: | 5 Years |

For More Information

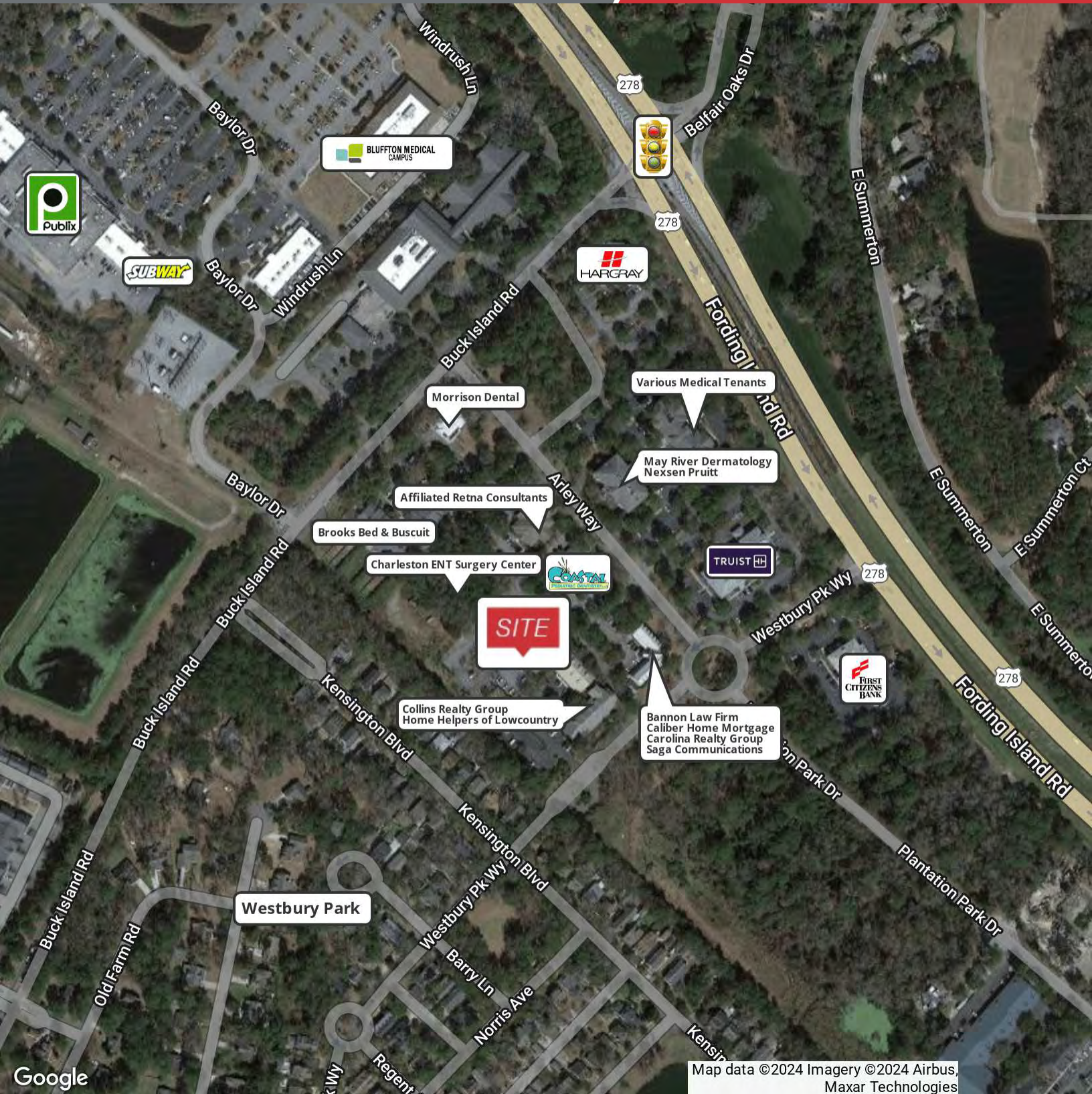
Baker Wilkins

Broker In Charge
O: 843 837 4460 x2
baker@naicarolinacharter.com



We obtained the information above from sources we believe to be reliable. However, we have not verified its accuracy and make no guarantee, warranty or representation about it. It is submitted subject to the possibility of errors, omissions, change of price, rental or other conditions, prior sale, lease or financing, or withdrawal without notice. We include projections, opinions, assumptions or estimates for example only, and they may not represent current or future performance of the property. You and your tax and legal advisors should conduct your own investigation of the property and transaction.

1227 May River Road, Suite 100
Bluffton, SC 29910
843 837 4460 tel
naicarolinacharter.com

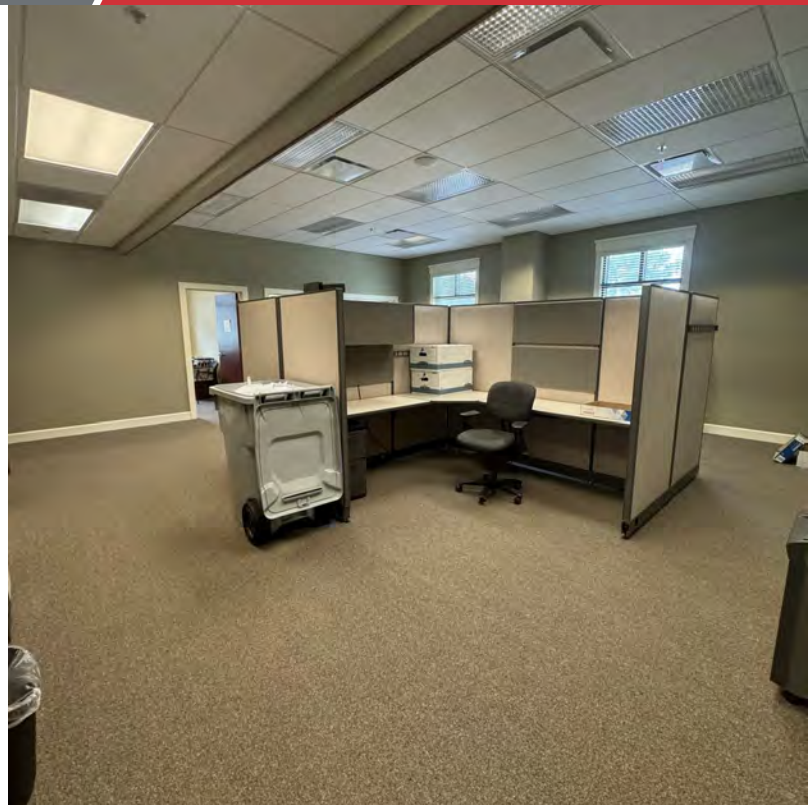


Google

Map data ©2024 Imagery ©2024 Airbus, Maxar Technologies

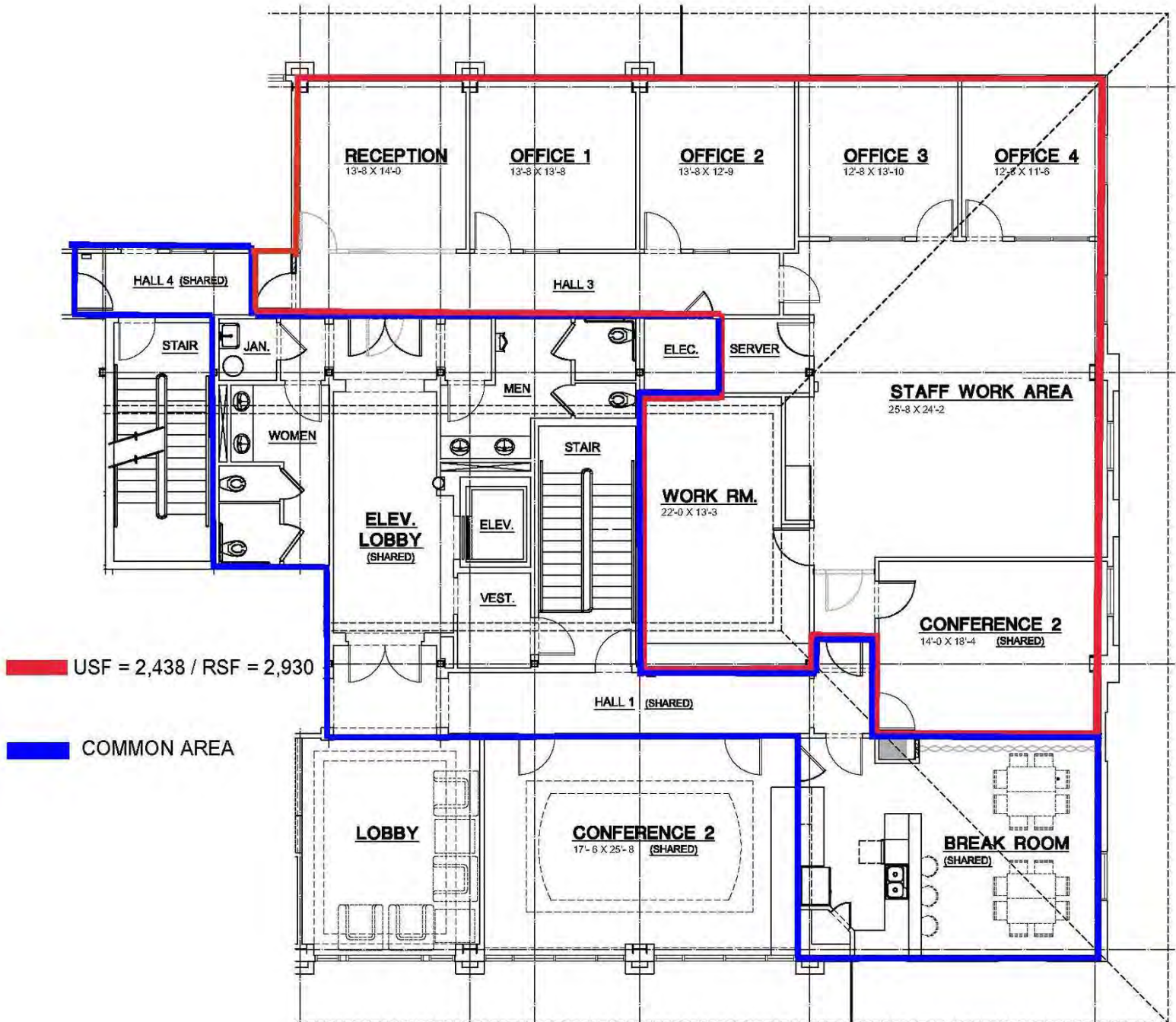
We obtained the information above from sources we believe to be reliable. However, we have not verified its accuracy and make no guarantee, warranty or representation about it. It is submitted subject to the possibility of errors, omissions, change of price, rental or other conditions, prior sale, lease or financing, or withdrawal without notice. We include projections, opinions, assumptions or estimates for example only, and they may not represent current or future performance of the property. You and your tax and legal advisors should conduct your own investigation of the property and transaction.

1227 May River Road, Suite 100
 Bluffton, SC 29910
 843 837 4460 tel
 naicarolinacharter.com



We obtained the information above from sources we believe to be reliable. However, we have not verified its accuracy and make no guarantee, warranty or representation about it. It is submitted subject to the possibility of errors, omissions, change of price, rental or other conditions, prior sale, lease or financing, or withdrawal without notice. We include projections, opinions, assumptions or estimates for example only, and they may not represent current or future performance of the property. You and your tax and legal advisors should conduct your own investigation of the property and transaction.

1227 May River Road, Suite 100
Bluffton, SC 29910
843 837 4460 tel
naicarolinacharter.com



We obtained the information above from sources we believe to be reliable. However, we have not verified its accuracy and make no guarantee, warranty or representation about it. It is submitted subject to the possibility of errors, omissions, change of price, rental or other conditions, prior sale, lease or financing, or withdrawal without notice. We include projections, opinions, assumptions or estimates for example only, and they may not represent current or future performance of the property. You and your tax and legal advisors should conduct your own investigation of the property and transaction.