



Showroom / Warehouse For Sale

53 Persimmon Street, Suite 103
Bluffton, South Carolina 29910

Property Highlights

- Excellent location with direct access to Bluffton Parkway and Sheridan Park for access to Highway 278.
- Very attractive Showroom, Conditioned Warehouse with shelving and 12' x 12" roll up door and two restrooms.
- Great Tenant Mix including; Closet Factory, Signarama, Silhouette Hair Studio & Cosmetic Skin and Laser Center

Offering Summary

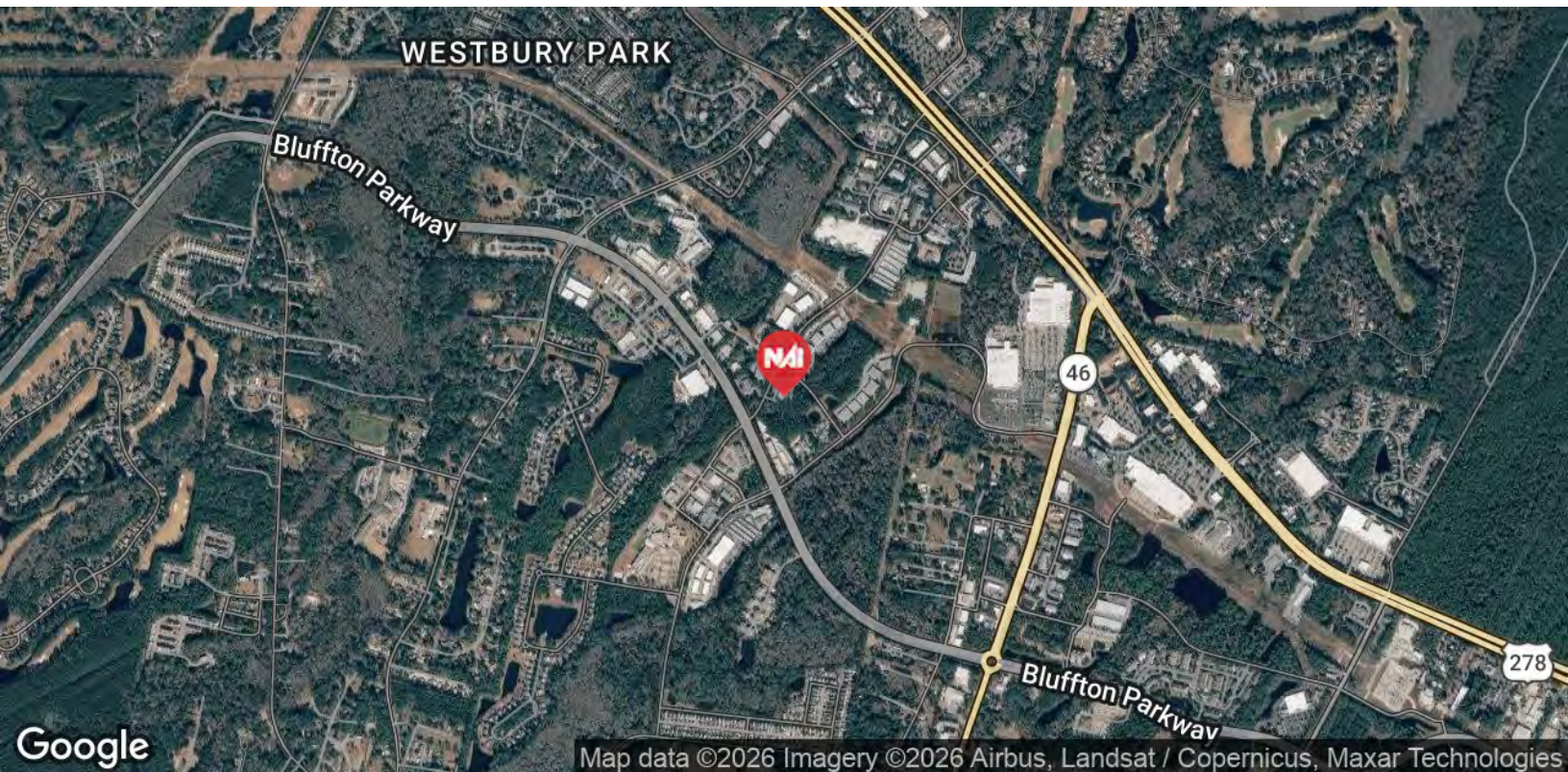
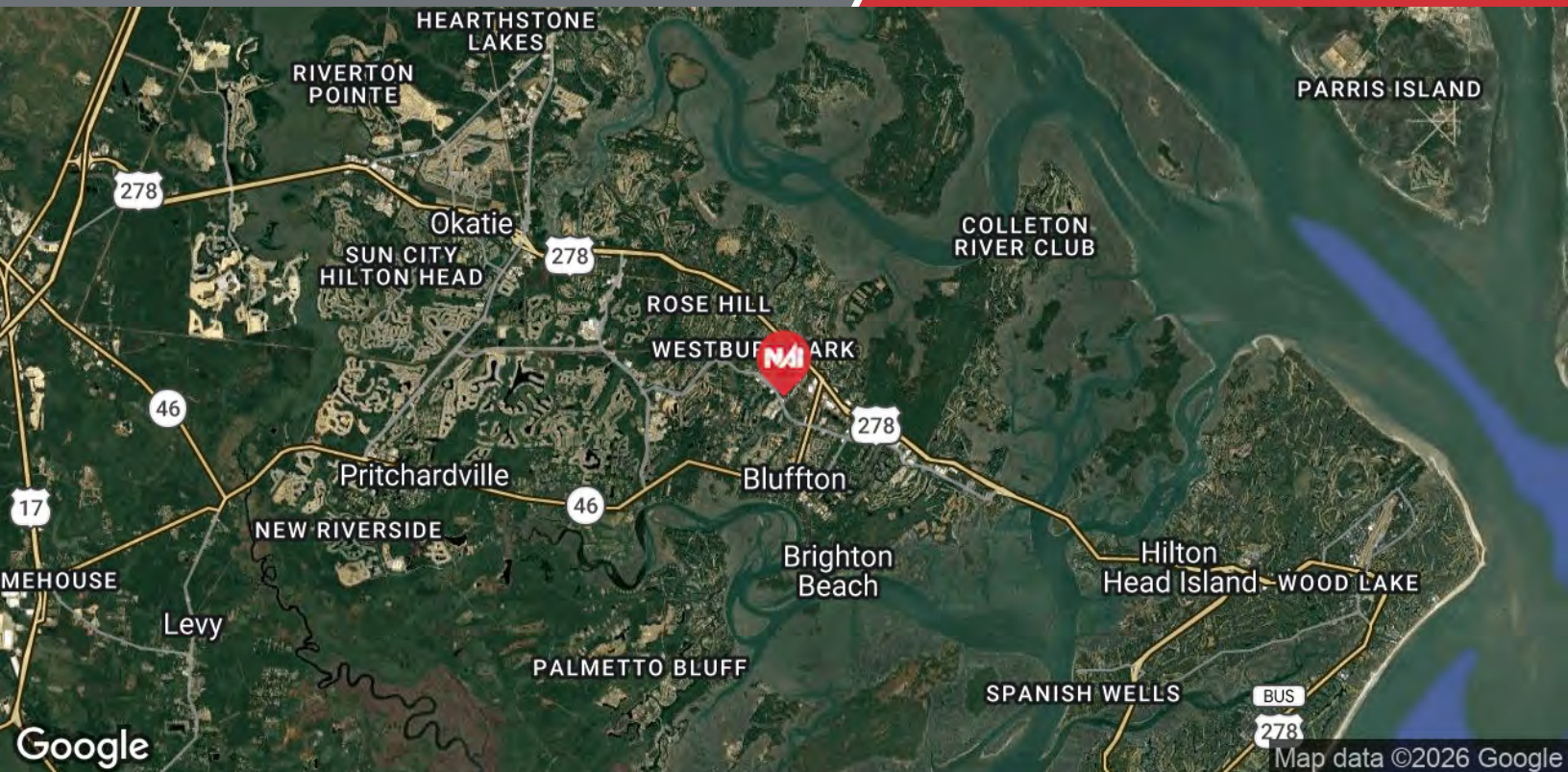
Sale Price:	\$950,000
2025 Property Taxes:	\$5,624.01
Monthly Regime Fees:	\$583.17
Zoning:	PUD
Approx. Square Feet:	3,539 SF
Initial Term:	5 Years
Annual Base Rent for Year 1:	\$21.00 PSF (NNN)
Increase to Base Rent:	3% Annually
2025 Estimated Annual NNN Budget:	\$4.00 PSF
Power:	In Tenant's Name

For More Information

Baker Wilkins

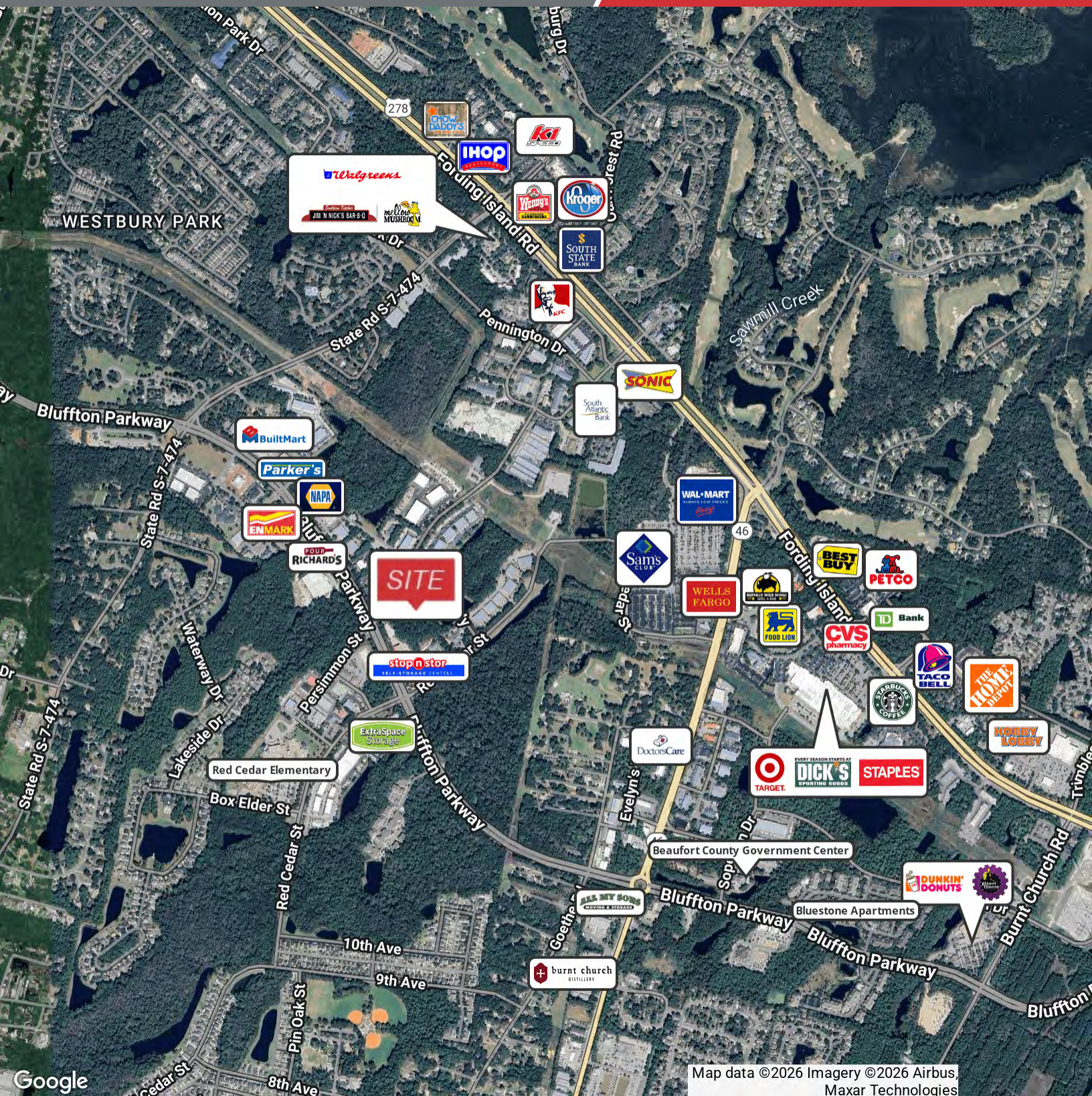
O: 843 837 4460 x2

baker@naicarolinacharter.com



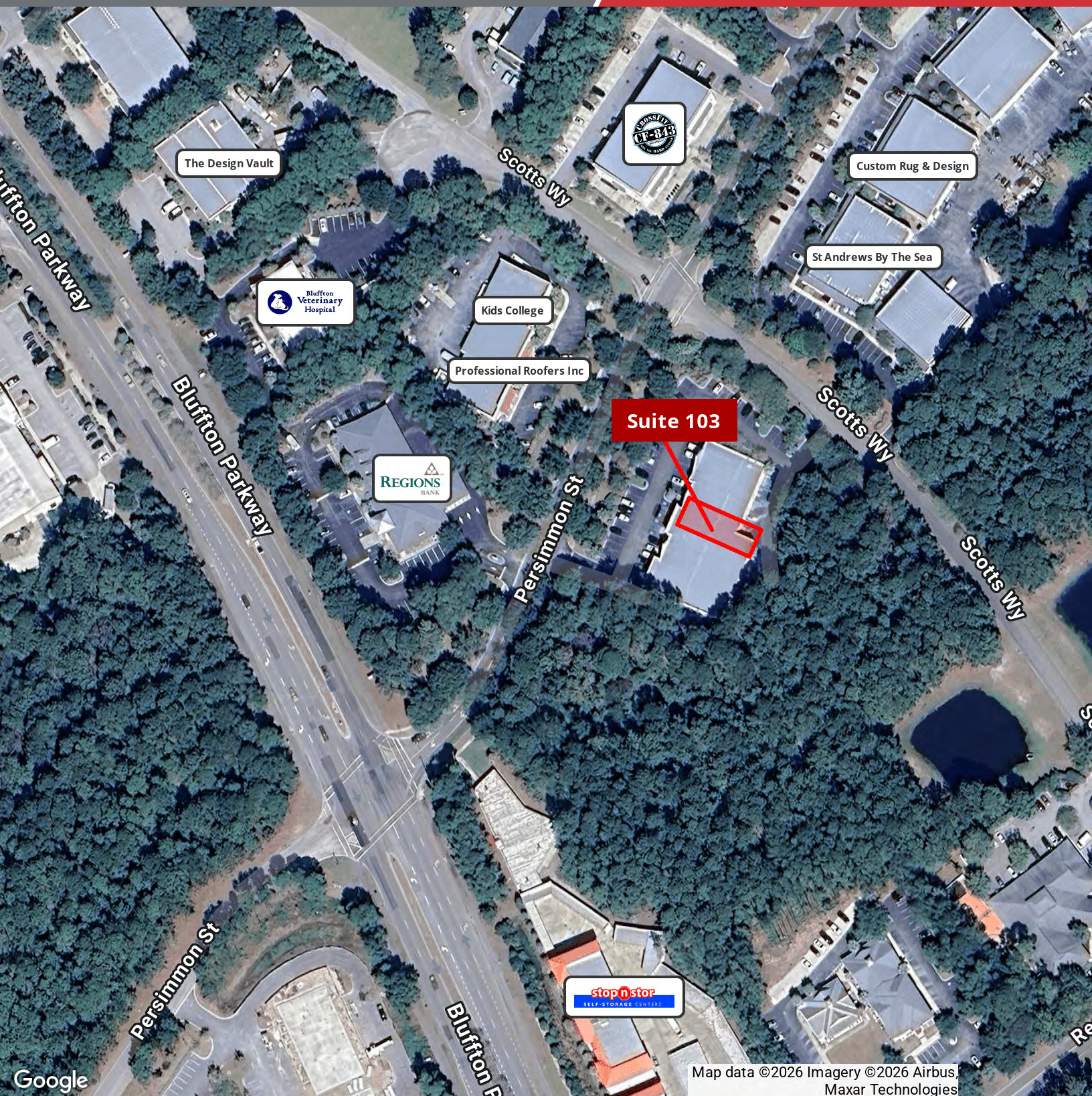
We obtained the information above from sources we believe to be reliable. However, we have not verified its accuracy and make no guarantee, warranty or representation about it. It is submitted subject to the possibility of errors, omissions, change of price, rental or other conditions, prior sale, lease or financing, or withdrawal without notice. We include projections, opinions, assumptions or estimates for example only, and they may not represent current or future performance of the property. You and your tax and legal advisors should conduct your own investigation of the property and transaction.

1227 May River Road, Suite 100, Suite 100
Bluffton, SC 29910
843 837 4460 tel
naicarolinacharter.com



We obtained the information above from sources we believe to be reliable. However, we have not verified its accuracy and make no guarantee, warranty or representation about it. It is submitted subject to the possibility of errors, omissions, change of price, rental or other conditions, prior sale, lease or financing, or withdrawal without notice. We include projections, opinions, assumptions or estimates for example only, and they may not represent current or future performance of the property. You and your tax and legal advisors should conduct your own investigation of the property and transaction.

1227 May River Road, Suite 100, Suite 100
Bluffton, SC 29910
843 837 4460 tel
na.carolinacharter.com



Map data ©2026 Imagery ©2026 Airbus,
Maxar Technologies

We obtained the information above from sources we believe to be reliable. However, we have not verified its accuracy and make no guarantee, warranty or representation about it. It is submitted subject to the possibility of errors, omissions, change of price, rental or other conditions, prior sale, lease or financing, or withdrawal without notice. We include projections, opinions, assumptions or estimates for example only, and they may not represent current or future performance of the property. You and your tax and legal advisors should conduct your own investigation of the property and transaction.

1227 May River Road, Suite 100, Suite 100
Bluffton, SC 29910
843 837 4460 tel
naicarolinacharter.com





We obtained the information above from sources we believe to be reliable. However, we have not verified its accuracy and make no guarantee, warranty or representation about it. It is submitted subject to the possibility of errors, omissions, change of price, rental or other conditions, prior sale, lease or financing, or withdrawal without notice. We include projections, opinions, assumptions or estimates for example only, and they may not represent current or future performance of the property. You and your tax and legal advisors should conduct your own investigation of the property and transaction.

1227 May River Road, Suite 100, Suite 100
Bluffton, SC 29910
843 837 4460 tel
naicarolinacharter.com

