

BREN MAR BUSINESS CENTER

5558—5600 General Washington Drive
Alexandria, VA 22312



SIZE: 53,737 SF

OFFICE AVAILABILITY: A202,A203,
A206, A213D, A214, B201, B204

RATE: \$18 PSF FS*

R&D AVAILABILITY: A007

RATE: \$18 PSF + NNN

Ideally located near major commuting routes I-395 (adjacent) and I-495 (1/4 mile) • Proximity to downtown Washington D.C. (8 miles) and Washington Reagan National Airport (6 miles)

- Move- in ready spaces available
- Mix of office and first floor flex space with overhead doors
- Ample free on-site surface parking.
- Conference Room amenity
- Flexibility in sizes ranging from 500 SF to 10,000 SF

*Janitorial not included



Michael Shulte
Commercial Leasing Manager
(703) 926 -3693 Direct
mschulte@publicstorage.com
www.pscommercialrealestate.com

This flyer is intended only as preliminary information on space available for lease; the property owner and its representatives make no representation that it is accurate or complete. Prospective tenants are advised to conduct their own investigation of the suitability of the premises for their intended use, and to consult with legal and tax professionals regarding the consequences of entering into a lease. All terms are subject to change and all spaces are subject to prior rental or withdrawal from the market without notice.

BREN MAR BUSINESS CENTER

5558—5600 General Washington Drive
Alexandria, VA 22312



Michael Shulte

Commercial Leasing Manager
(703) 926-3693 Direct
mschulte@publicstorage.com



Availability



AVAILABILITIES	SF	LEASE RATE	DATE AVAILABLE
Building 5568 Suite A007 (R&D)	4,900 SF	\$18 SF/YR + NNN	Immediately
Building 5568 Suite A202	1,100 SF	\$18 SF/YR FS	Immediately
Building 5568 Suite A206	1,018 SF	\$18 SF/YR FS	Immediately
Building 5568 Suite A213D	1,727 SF	\$18 SF/YR FS	Immediately
Building 5568 Suite A214	792 SF	\$18 SF/YR FS	Immediately
Building 5600 Suite B201	1,015 SF	\$18 SF/YR FS	Immediately
Building 5600 Suite B204	1,381 SF	\$18 SF/YR FS	Immediately

BREN MAR BUSINESS CENTER

5558—5600 General Washington Drive
Alexandria, VA 22312



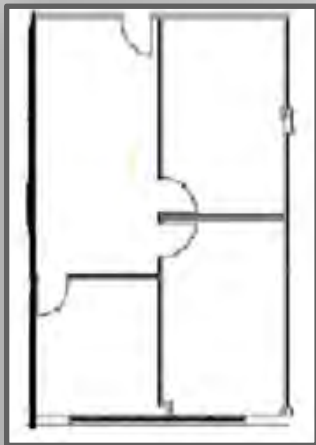
Michael Schulte

Commercial Leasing Manager
(703) 926-3693 Direct
mschulte@publicstorage.com



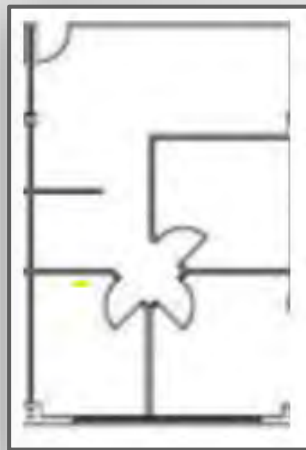
Building A

A202



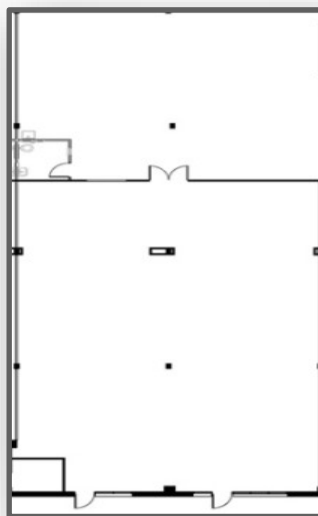
1,100 SF

A206



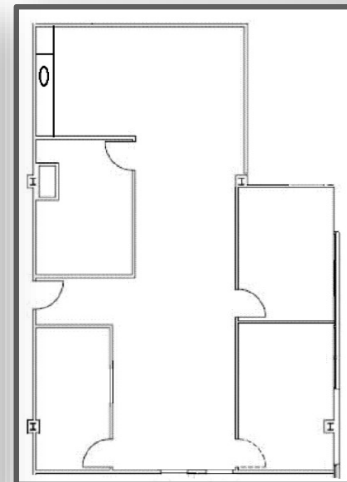
1,018 SF

A007



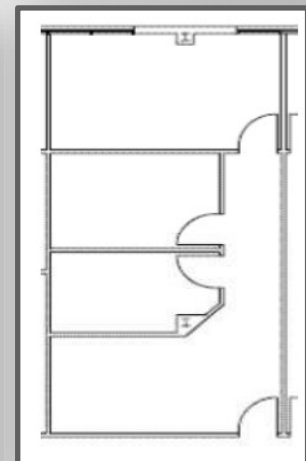
4,900 SF

A213D



1,727 SF

A214



792 SF

BREN MAR BUSINESS CENTER

5558—5600 General Washington Drive
Alexandria, VA 22312



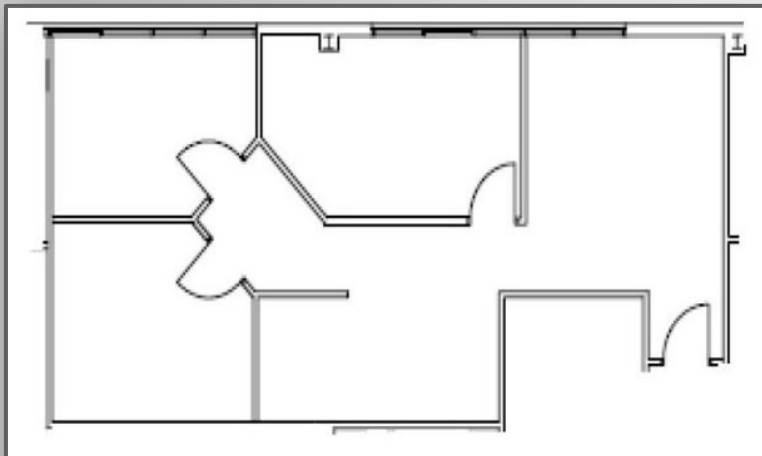
Michael Schulte

Commercial Leasing Manager
(703) 926-3693 Direct
mschulte@publicstorage.com



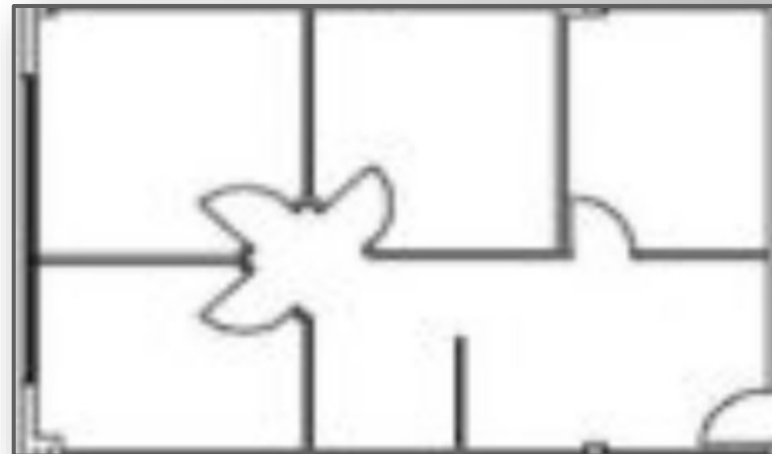
Building B

B201

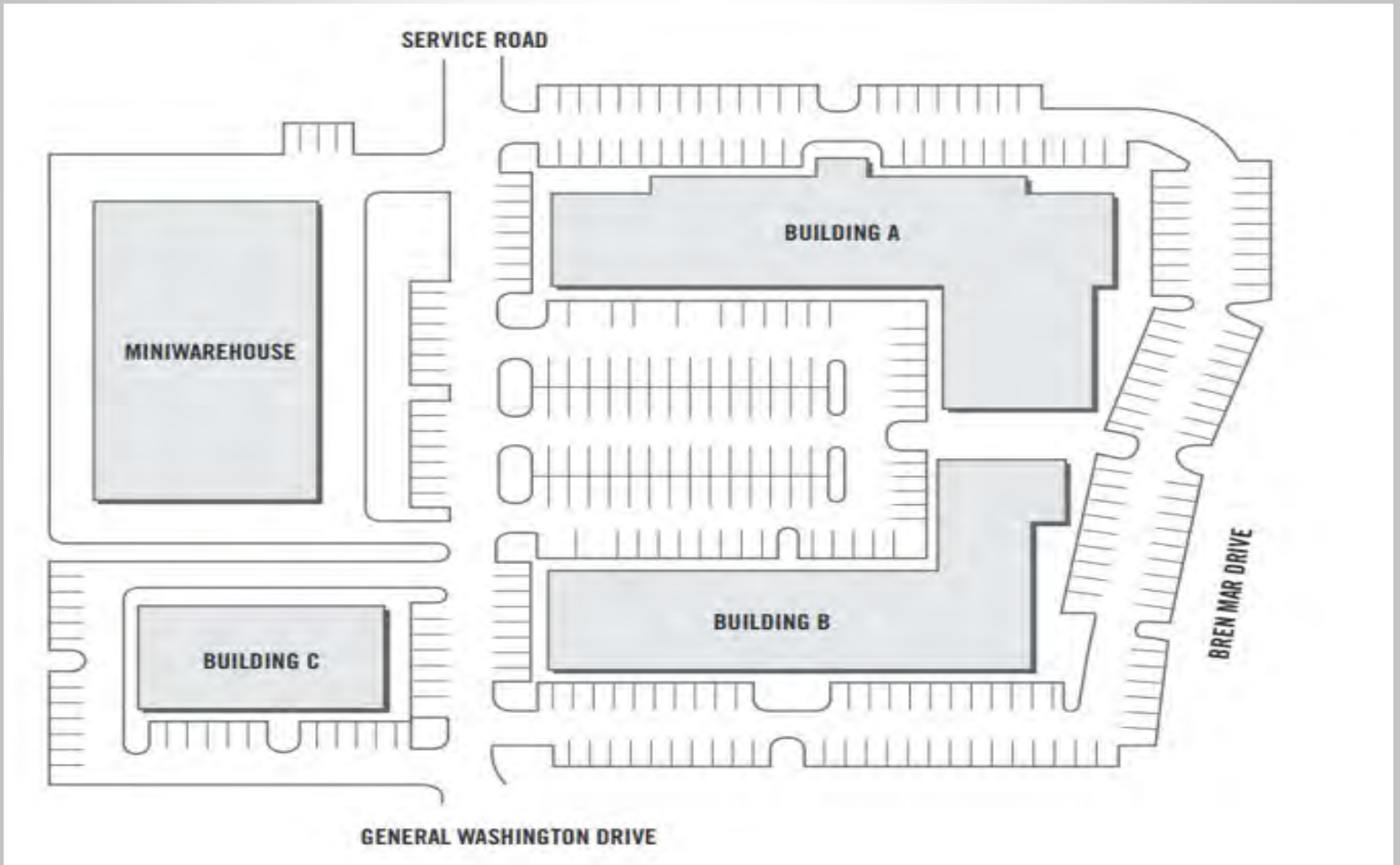


1,015 SF

B204



1,381 SF



BUILDING A



BUILDING B



