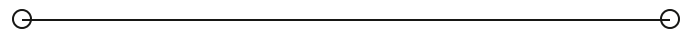




**PROPOSAL**

# Vista Building

**7525 W DESCHUTES PLACE SUITE 2C & 2D**  
Kennewick, WA 99336

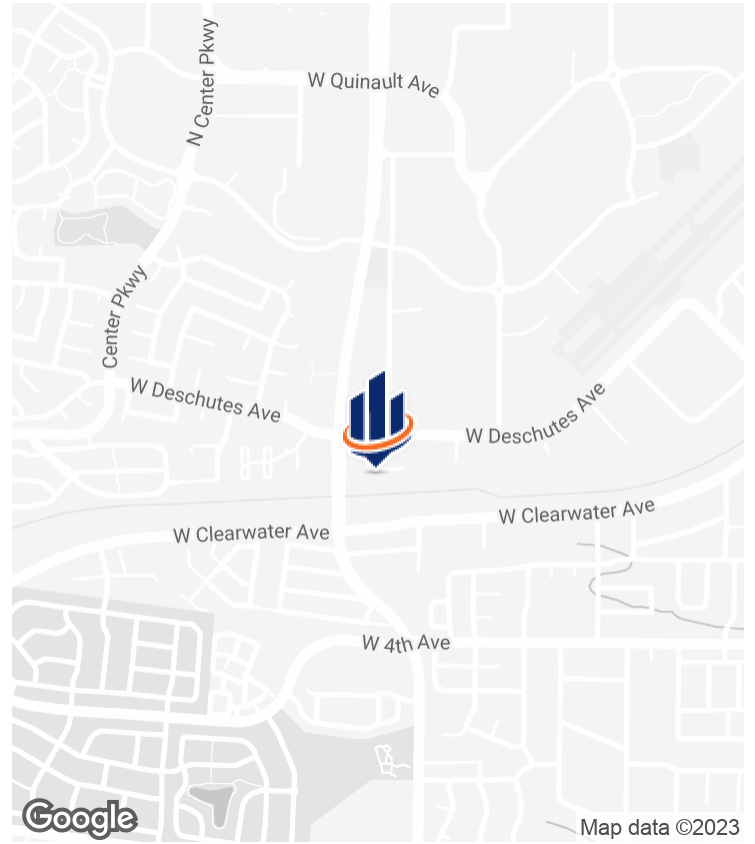


**PRESENTED BY:**

**JAMES WADE**  
O: 509.737.9429  
james.wade@svn.com

**SCOTT HOWELL**  
O: 509.379.3111  
scott.howell@svn.com

# PROPERTY SUMMARY



## OFFERING SUMMARY

<b>LEASE RATE:</b>	\$15.00 SF/yr (NNN)
<b>BUILDING SIZE:</b>	10,600 SF
<b>AVAILABLE SF:</b>	3,000 SF
<b>LOT SIZE:</b>	0.26 Acres
<b>YEAR BUILT:</b>	1981
<b>ZONING:</b>	Community Commercial
<b>APN:</b>	106891020002001

## PROPERTY OVERVIEW

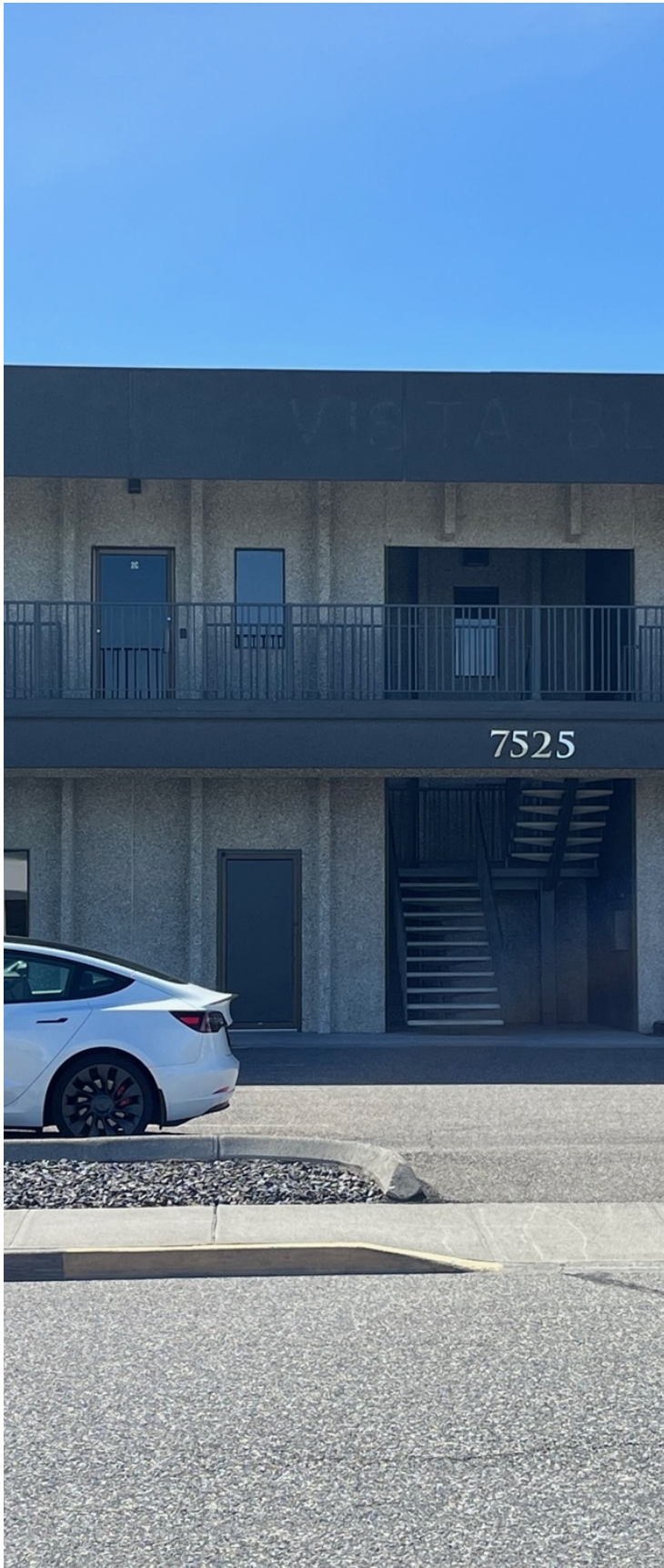
Quality Office space just off Columbia Center Boulevard and in Vista Field. Two large open area's for cubicles, 4 private offices, conference room, and kitchenette. Two shared bathrooms, and back patio area with table. Please call LA for additional details.

## PROPERTY HIGHLIGHTS

- Newly remodeled office space
- In the heart of Vista Field in Kennewick
- NNN's \$4.00 psqft



## PROPERTY DESCRIPTION



### PROPERTY DESCRIPTION

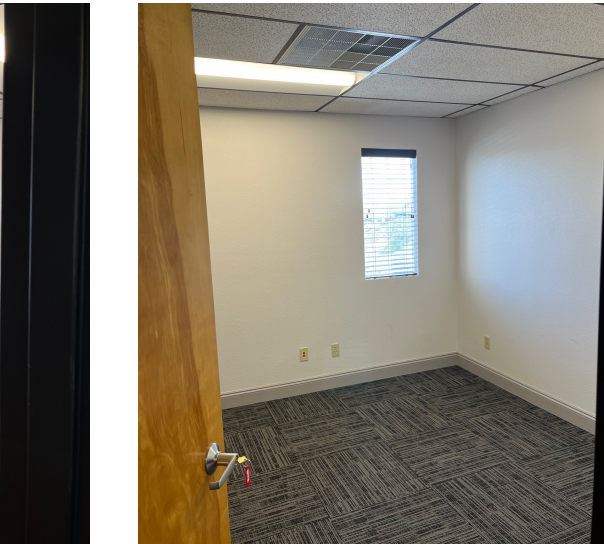
Quality Office space just off Columbia Center Boulevard and in Vista Field. Two large open area's for cubicles, 4 private offices, conference room, and kitchenette. Two shared bathrooms, and back patio area with table. Please call LA for additional details.

### LOCATION DESCRIPTION

Columbia Center Boulevard & Deschutes



# ADDITIONAL PHOTOS





# AERIAL MAP

