



**MEDICAL ASSET  
MANAGEMENT**  
MEDICAL PROPERTY SPECIALISTS



St. Joseph Professional Building | 2031 Alameda Ave. | Burbank, CA  
**Medical Office Suites For Lease**

Available Suites	Rentable SF	Rental Rates
Suite 340	900 RSF	\$3.50 FSG

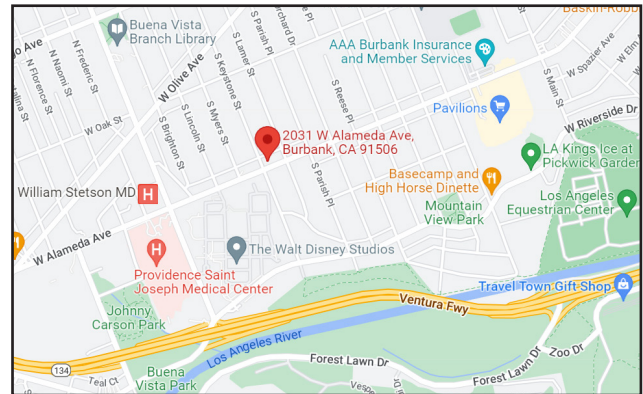
**Features** 28,000 SF, 3 story professional medical building

Located in the heart of Burbank

3 blocks from Providence St. Joseph Medical Center Campus

Convenient accessibility and close proximity to I-5, CA-134 and CA-170 Freeways

**Parking** \$95 per month/reserved



**Contact**

**Brock Burnett**  
(818) 990-5200 x102  
brockb@medicalasset.com  
DRE#: 01814211

**Mitch Yankowitz**  
(310) 517-4861  
mitchy@medicalasset.com  
DRE#: 01360137

**www.medicalasset.com**  
**(310) 530-6060**

**South Bay**  
201 Continental Blvd., Ste. 210  
El Segundo, CA 90245

**Downtown Los Angeles**  
1400 S. Grand Ave., Ste. 808  
Los Angeles, CA 90015

**San Fernando Valley**  
5411 Eriwanda Ave., Ste. 208  
Tarzana, CA 91356

**Long Beach**  
1040 Elm Ave., Ste. 308  
Long Beach, CA 90813



# MEDICAL ASSET MANAGEMENT

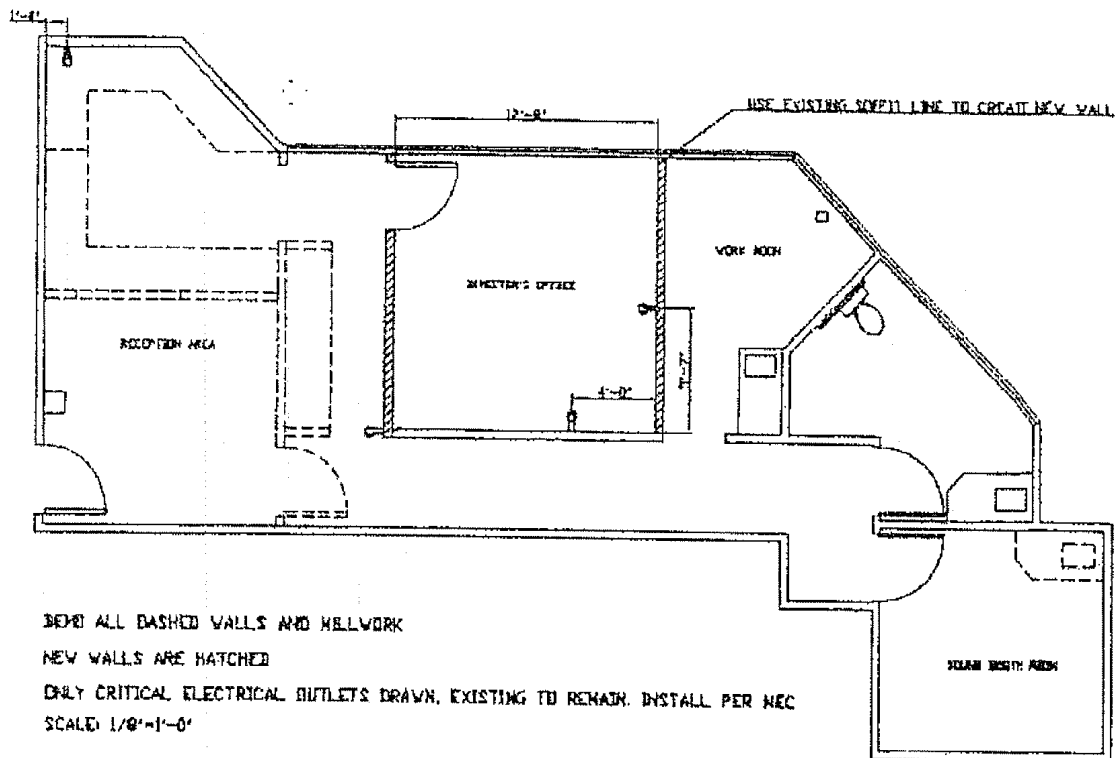
MEDICAL PROPERTY SPECIALISTS

## St. Joseph Professional Building | 2031 Alameda Ave. | Floor Plans



**Suite 340**

**900 sq. ft.**



The information contained herein is deemed reliable, but cannot be guaranteed by Medical Asset Management and is subject to change.