

FOR LEASE

Lot 27, Canyon View Business Park

Golden, Colorado 80403



Build-to-Suit Options

Up to 40,000 SF

Office/Industrial/Flex Site

Property Details

City Golden

County Jefferson

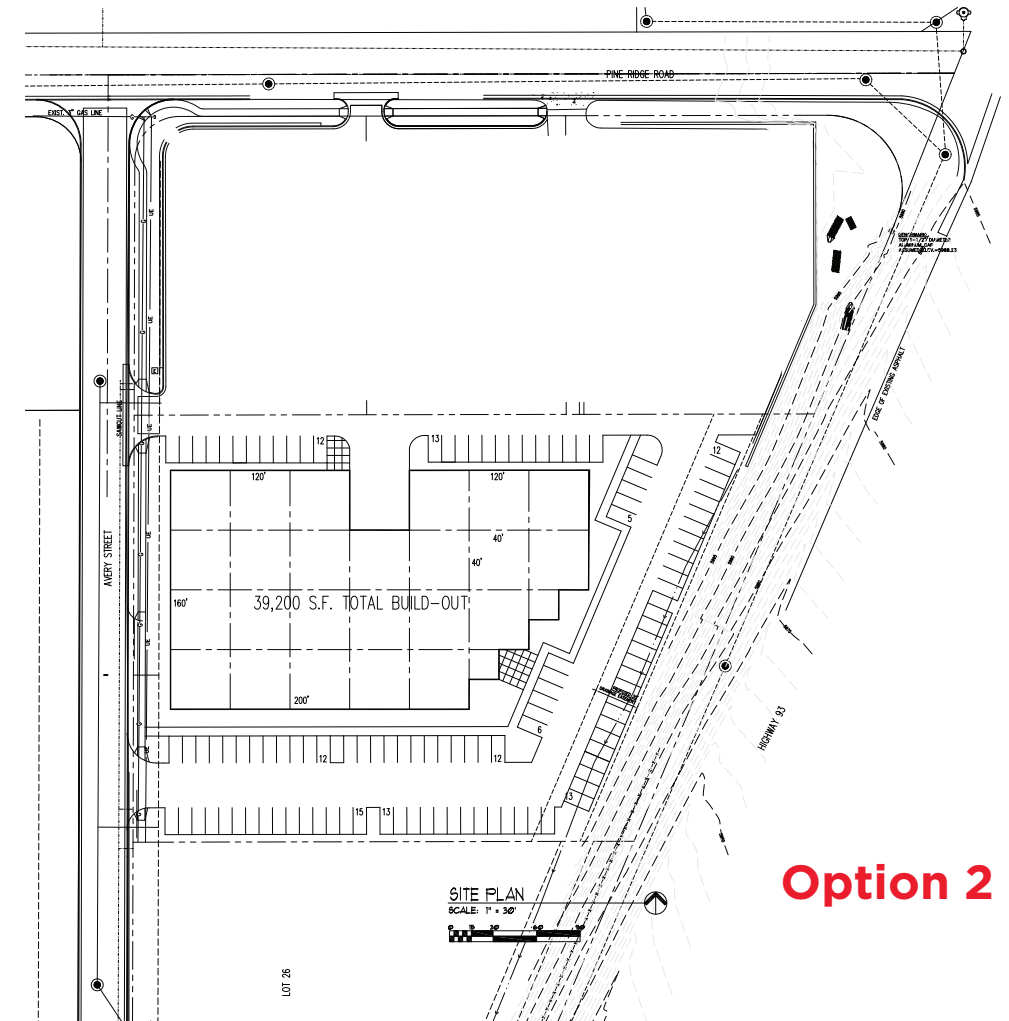
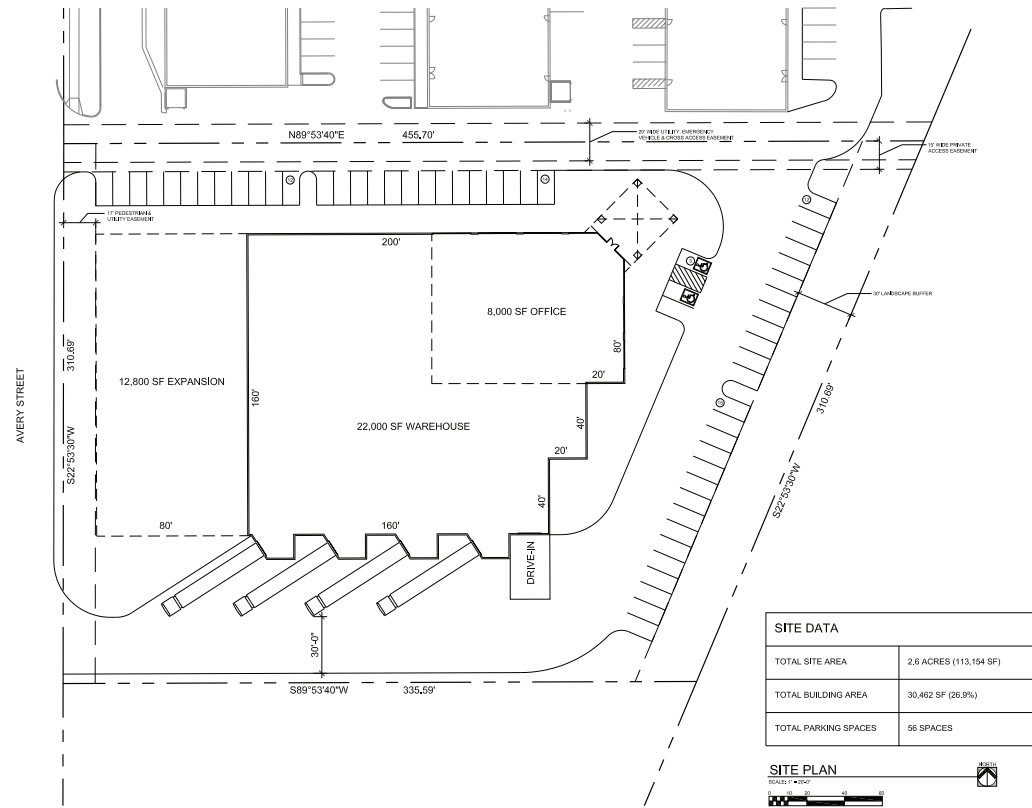
Land Size 2.60 Acres

Zoning PUD: Office /
Industrial / Flex

Electricity/Gas Xcel Energy

Water/Sewer City of Golden

Option 1



Option 2

Proposed Rendering



For more information, please contact:

Chris Ball, SIOR, CCIM
Managing Director
+1 303 312 4280
chris.ball@cushwake.com

Esther Kettering, MBA
Managing Director
+1 303 312 4278
esther.kettering@cushwake.com

1401 Lawrence Street, Suite 1100
Denver, Colorado 80202

T +1 303 292 3700
F +1 303 534 8270

cushmanwakefield.com