



## The Bristol

310 E 65th St, New York, NY 10065

**CHRISTIE'S**  
INTERNATIONAL REAL ESTATE



**Julie Hoffman**

Christie's International Real Estate Group, Inc.  
1 Rockefeller Plaza, Suite 2402, New York, NY 10020  
[juliehoffman@christiesrealestategroup.com](mailto:juliehoffman@christiesrealestategroup.com)  
(917) 837-4758



# The Bristol

\$75.00 /SF/YR

PROFESSIONAL SPACE -1E Street level Professional Space available at 310 East 65th Street with TWO private front entrances in a doorman building. \$5500/month. Delivered as a white box that can be built out to suit one's professional needs and maximize day to day business operations. Conveniently located close to Memorial Sloan Kettering Cancer Center, New York-Presbyterian/Weill Cornell Medical Center, and the 4,5,6,N,R and Q. Call for additional details....



Rental Rate:	\$75.00 /SF/YR
Property Type:	Multifamily
Property Subtype:	Apartment
Apartment Style:	Mid Rise
Year Built:	1965
Walk Score ®:	98 (Walker's Paradise)
Transit Score ®:	100 (Rider's Paradise)
Rental Rate Mo:	\$6.25 /SF/MO



This floor plan illustration is an approximation of existing structures and features and is provided for convenience only with the permission of the seller. All measurements are approximate and not guaranteed or to scale. Buyer should confirm measurements using their own sources.

### 1st Floor Ste E

Space Available	880 SF
Rental Rate	\$75.00 /SF/YR
Date Available	Now
Service Type	TBD
Space Type	Relet
Space Use	Office/Medical
Lease Term	5 Years

Offered at \$5500 per month Street-level Professional Space is available at 310 East 65th Street with TWO private front entrances in a doorman building. Delivered as a white box that can be built out to suit one's professional needs and maximize day-to-day business operations. Conveniently located close to the 4,5,6,N,R and Q.



## 310 E 65th St, New York, NY 10065

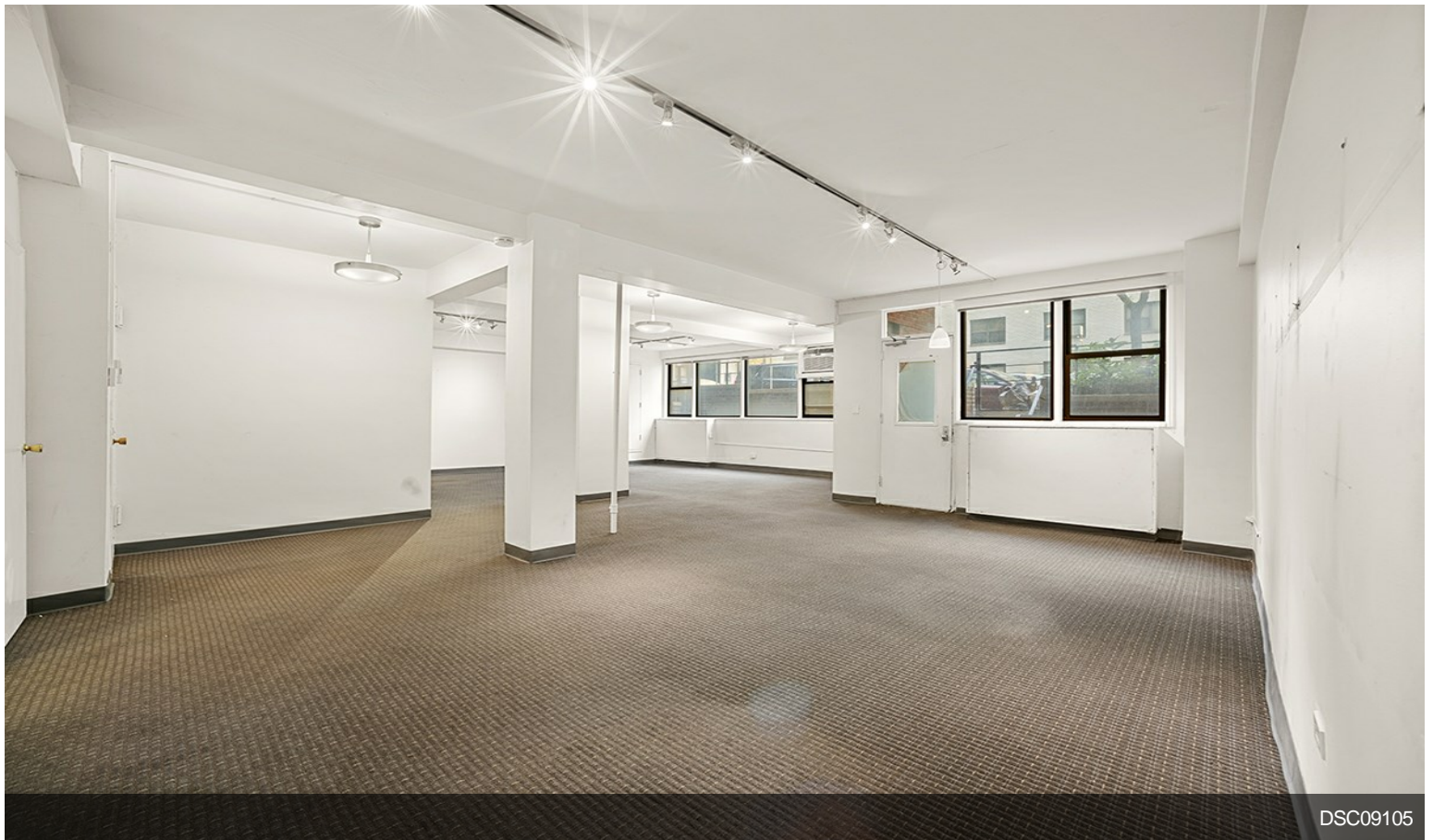
### PROFESSIONAL SPACE -1E

Street level Professional Space available at 310 East 65th Street with TWO private front entrances in a doorman building. \$5500/month. Delivered as a white box that can be built out to suit one's professional needs and maximize day to day business operations. Conveniently located close to Memorial Sloan Kettering Cancer Center, New York-Presbyterian/Weill Cornell Medical Center, and the 4,5,6,N,R and Q. Call for additional details.

# Property Photos



DSC09117



DSC09105

# Property Photos

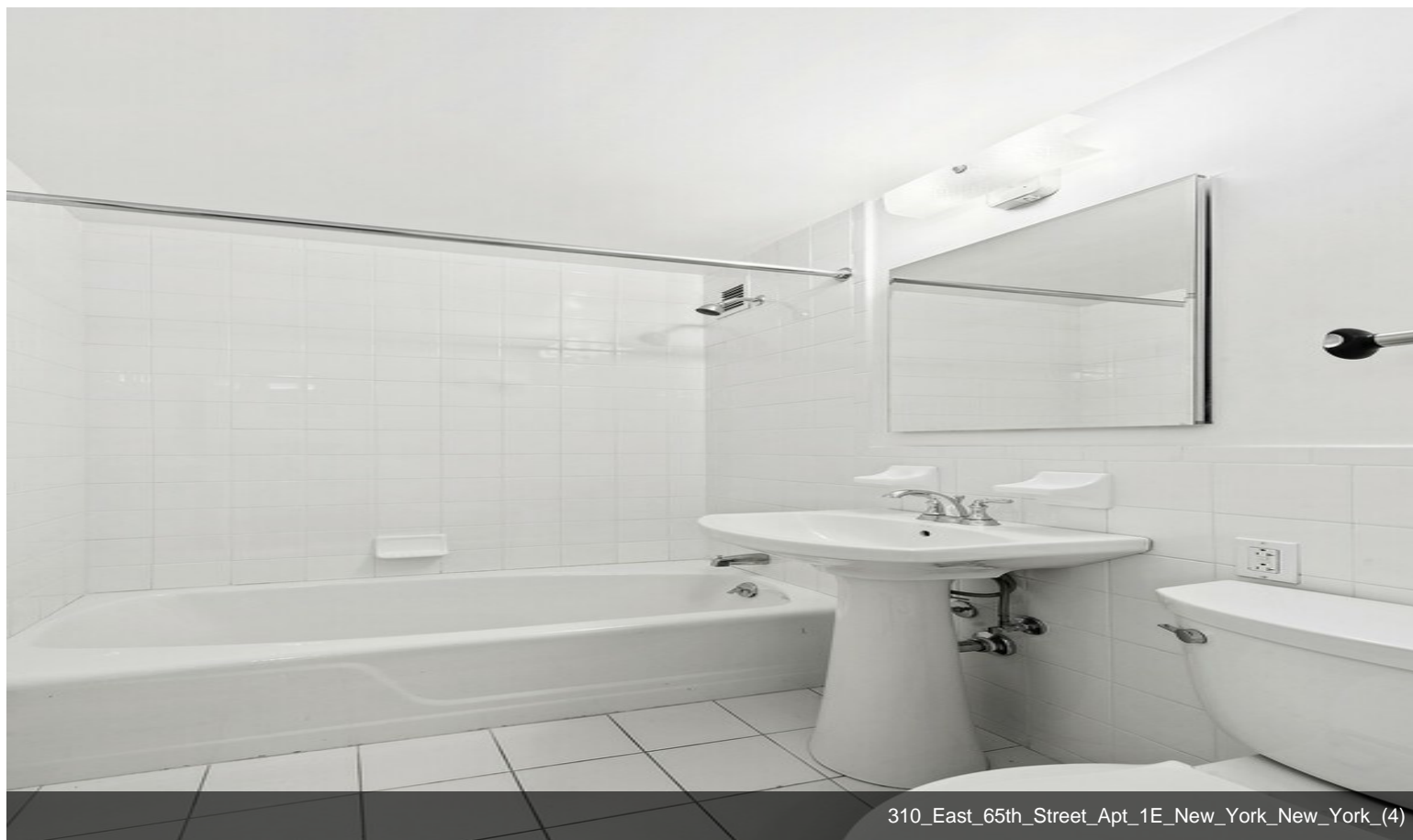


DSC09114



DSC09126

# Property Photos



310\_East\_65th\_Street\_Apt\_1E\_New\_York\_New\_York\_(4)

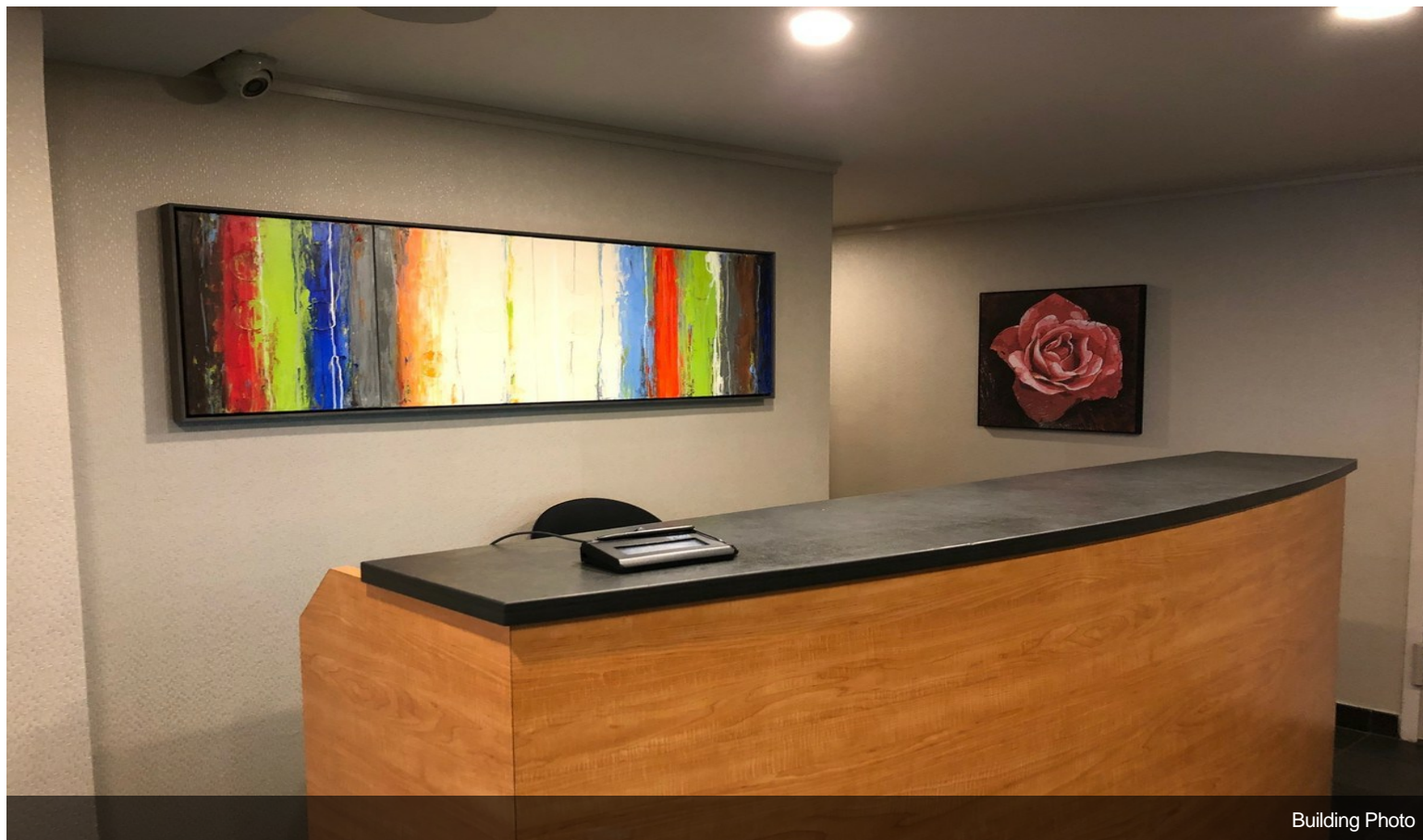


Building Photo

# Property Photos



Building Photo



Building Photo