

THE BLOCK At Westwood

22 Everett St., Westwood, MA / Off I-95, Rt. 1 and Rt. 1A

New Construction Retail Space

2,600 SF Available

Highlights

- The Block - New multi-family/retail center of 99 residential units & 11,247 SF first floor retail
- Join Accelerated Performance and Lux Nail Spa
- In the heart of Westwood's commercial region
- Immediate delivery
- Outstanding parking and access, including EV parking
- **Developer:** Supreme Companies
- **Westwood Average HH Income:** \$255,000
- **Delivery:** December 2025
- **Traffic:** Everett St - 17,000 ADT



THE BLOCK at Westwood

22 Everett St. | Westwood, MA

Retail Market

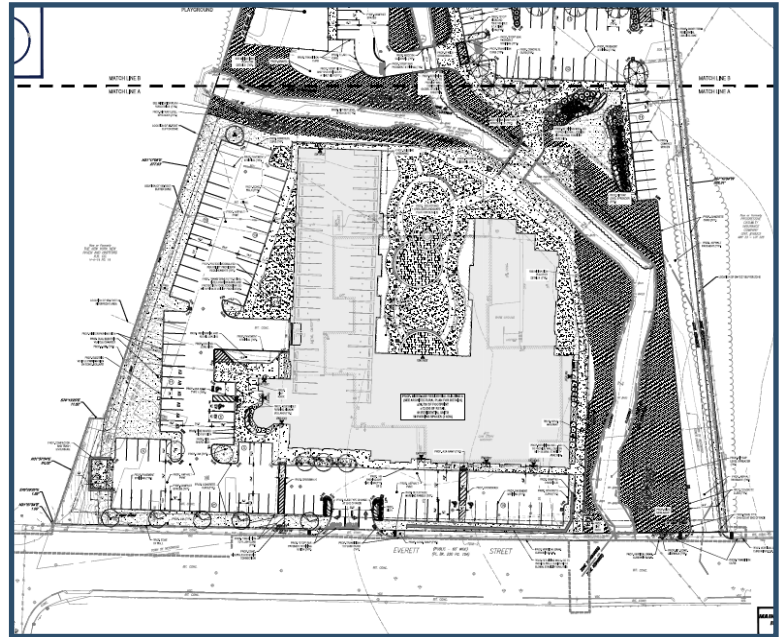
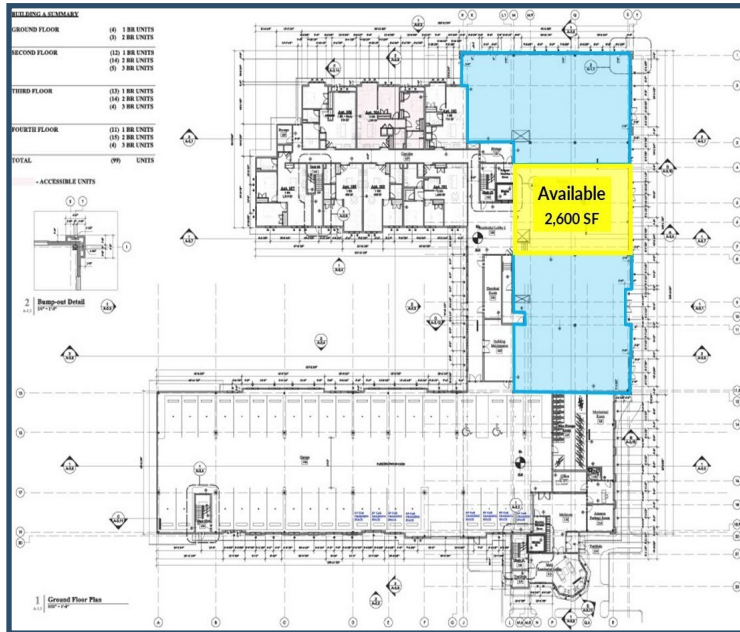


2024 Demographics	1 Mile	3 Miles	5 Miles
Estimated Population	6,283	59,410	155,462
Estimated Households	2,303	22,831	58,586
Estimated Daytime Employees	4,846	43,891	89,217
Estimated Average HH Income	\$148,724	\$149,218	\$149,770

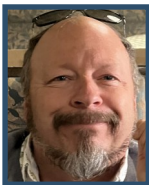
Traffic Count	Everett St.	Rt. 1	Rt. 1A
Average Daytime Traffic	17,000	48,000	20,000

THE BLOCK at Westwood

22 Everett St. | Westwood, MA



Contact Us



Bobby Burke

508-479-5294

bobby.acreco@gmail.com



Dusty Burke

508-735-6378

dusty@acreco.com

American Commercial Real Estate

50 Ledgeview Way #2415, Wrentham, Massachusetts 02093

Tel: (508) 735-6378 | E-mail: dusty@acreco.com | www.acreco.com