

FOR SALE OR LEASE

2340 DEAN STREET, ST. CHARLES, IL 60175



LOCATION DESCRIPTION

2340 Dean Street is located northwest of the Randallwood Office Center in St. Charles, IL.

OFFERING SUMMARY

BUILDING SF	± 11,403 SF
LOT SIZE	1.3 Acres
ZONING	O-R (Office/Research)
PARKING	50 Surface Parking Spots
SALE PRICE	Subject to Offer
LEASE RATE	Subject to Offer

PROPERTY HIGHLIGHTS

- Elevator
- Basement for Additional Storage

POTENTIAL USES

O-R Zoning allows for the following uses:

- Assisted Living Facility
- Art Gallery/Studio
- Cultural Facilities
- Indoor Recreation/Amusement
- Places of Worship
- Banks/ Financial Institutions
- Day Care Center
- Emergency Medical Center
- Medical/Dental Clinics
- Office, Business, Professional Services
- Professional Training Center
- Veterinary Office/Animal Hospital
- College/University
- Hospice & Nursing Home
- Schools, Specialized Instruction
- Research & Development

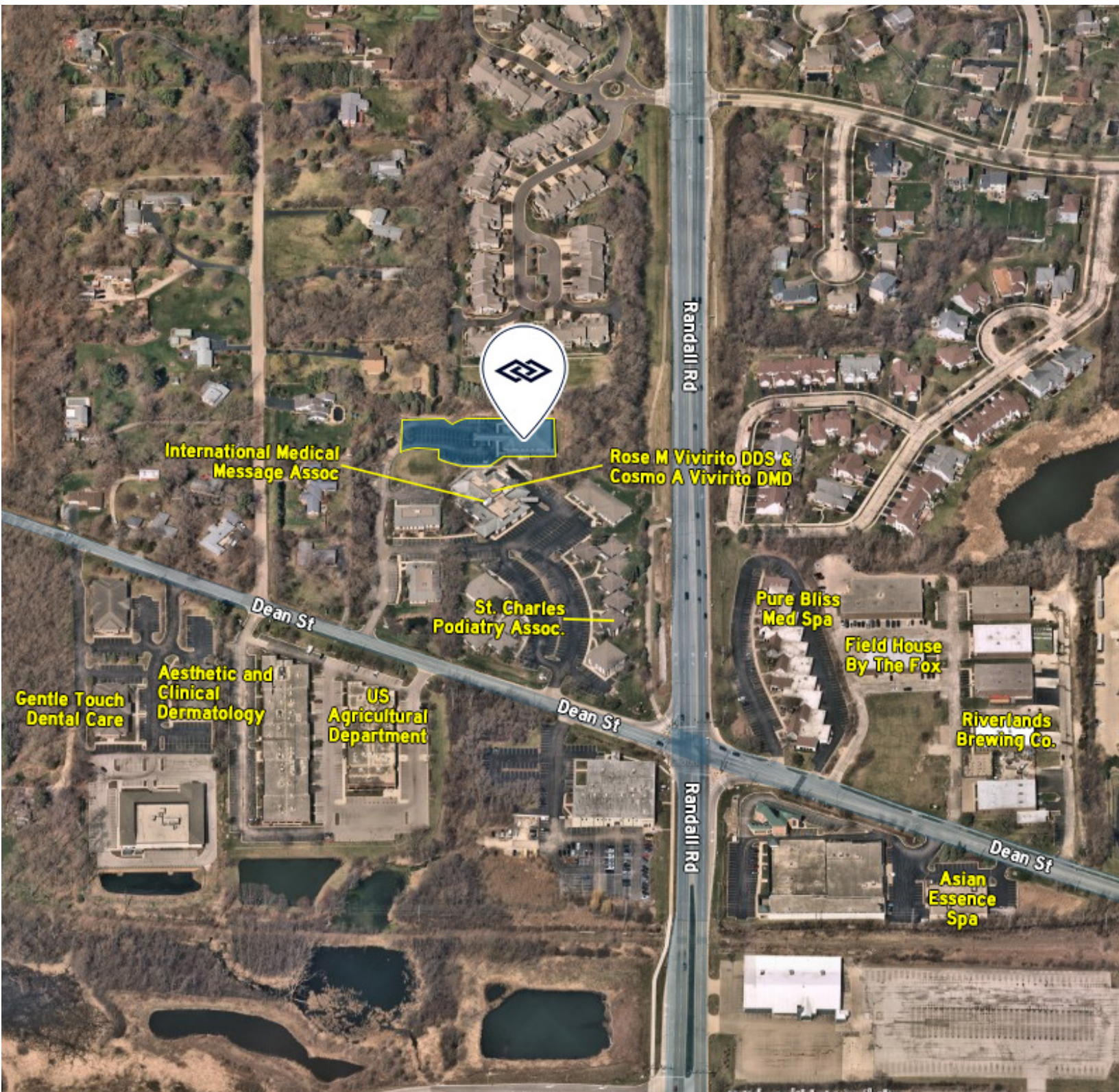
LAURA PERLMAN | ASSOCIATE | 773.714.2147 | lperlman@darwinpw.com



970 N. Oaklawn Avenue, Suite 100 | Elmhurst, IL 60126 | Tel: 630-782-9520 | Fax: 630-782-9531 | darwinpw.com
Submitted subject to error, change in status, or withdrawal without notice.

FOR SALE OR LEASE

2340 DEAN STREET, ST. CHARLES, IL 60175



LAURA PERLMAN | ASSOCIATE | 773.714.2147 | lperlman@darwinpw.com



970 N. Oaklawn Avenue, Suite 100 | Elmhurst, IL 60126 | Tel: 630-782-9520 | Fax: 630-782-9531 | darwinpw.com
Submitted subject to error, change in status, or withdrawal without notice.