

- THE - EARNEST

4201 30TH STREET | SAN DIEGO | CA 92104

FOR LEASE

RETAIL OR OFFICE SPACE $\pm 1,000$ SF



MARTIN F. ALFARO
Associate Vice President
Martin@PacificCoastCommercial.com
Direct +1 858 598 2890
Lic. 01230078

PACIFIC COAST COMMERCIAL
10721 Trenea St, Suite 200, San Diego, CA 92131
www.PacificCoastCommercial.com
Office +1 619 469 3600
Lic. 01209930

The information contained herein has been given to us by the owner of the property or other sources we deem reliable, we have no reason to doubt its accuracy, but we do not guarantee it. All information including zoning and use should be verified prior to lease.

- THE - EARNEST

PROPERTY HIGHLIGHTS



located in the trendy earnest apartment development
in popular north park community

[<www.liveearnest.com>](http://www.liveearnest.com)



1,000 sq. ft. retail / office space with high visibility



ideally suited for retail business or satellite office
no restaurant or hair salon users



suite has good vehicular and foot traffic
walker's paradise (97)



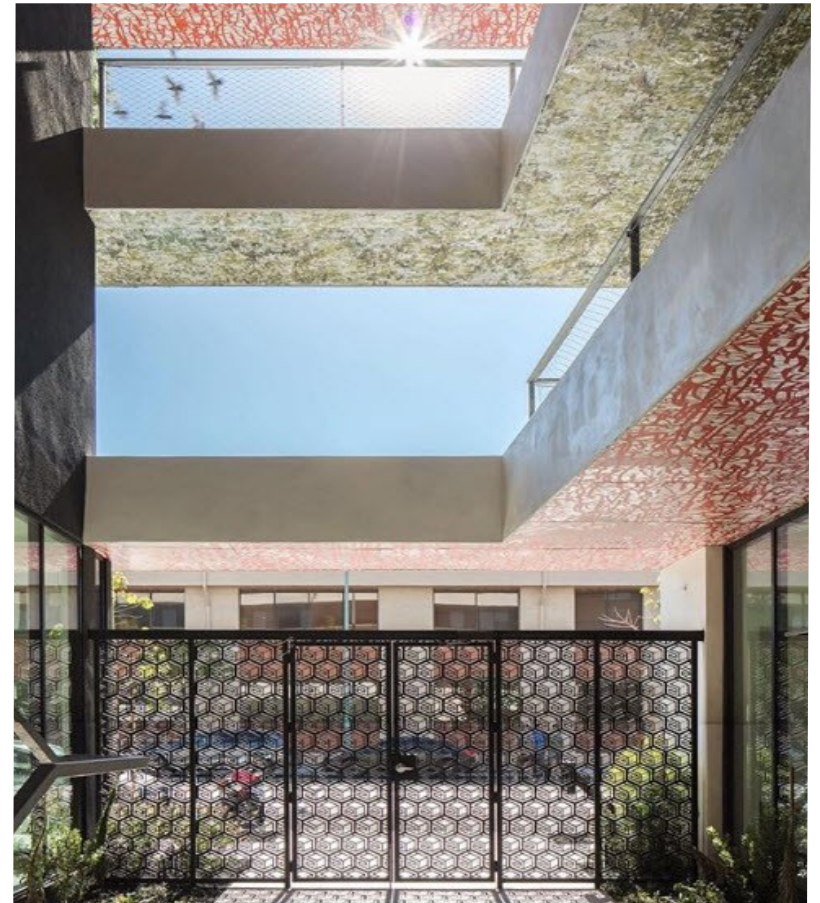
concrete floors, ada restroom, high ceilings &
plenty of natural light



abundance of off street parking



asking rent: \$2.75/sf (\$33 annual) + triple nets



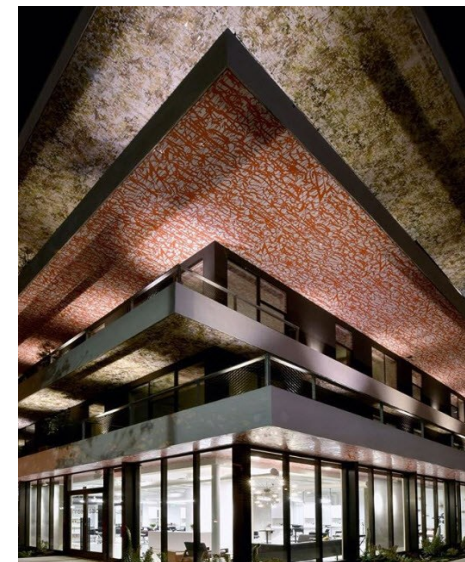
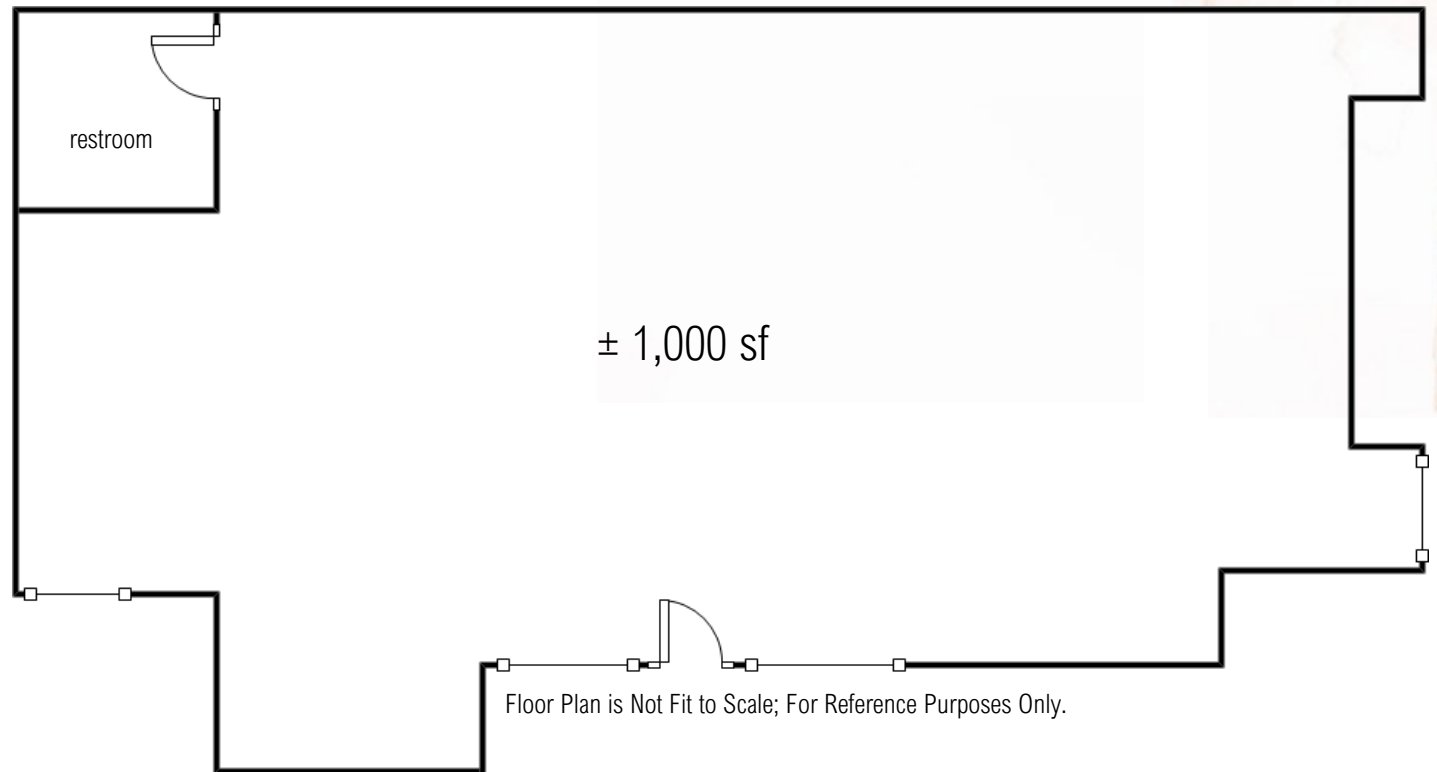
SUITE

± 1,000 sf retail / office
all gender ada restroom
concrete floors
high ceilings
plenty of natural light

PROPERTY

mixed use development
± 29,600 sf building
± 17,424 sf lot (.40 acres)
39 apartment units
Zoning: 446-233-12-00

- THE - EARNEST



- THE - EARNEST



NEARBY RETAIL



- THE - EARNEST

4201 30TH STREET | SAN DIEGO | CA 92104

FOR LEASE

RETAIL OR OFFICE SPACE ± 1,000 SF



MARTIN F. ALFARO
Associate Vice President
Martin@PacificCoastCommercial.com
Direct +1 858 598 2890
Lic. 01230078

PACIFIC COAST COMMERCIAL
10721 Trenea St, Suite 200, San Diego, CA 92131
www.PacificCoastCommercial.com
Office +1 619 469 3600
Lic. 01209930

The information contained herein has been given to us by the owner of the property or other sources we deem reliable, we have no reason to doubt its accuracy, but we do not guarantee it. All information including zoning and use should be verified prior to lease.