

FOR SALE

218 South Caroline Street

Herkimer, New York 13350



6,696± SF Mixed Use Building on 0.30± Acres

Property Highlights

- 4,696± SF retail showroom with attached 2,000± SF warehouse storage space
- Warehouse in rear of building has 10-13' ceiling height and an 11'x11' drive-in door
- Great location in direct proximity to the State Street retail corridor
- Showroom space can easily be subdivided for multi-tenant operation to bring in additional income for a buyer/user
- The building has been well maintained and is in move in ready condition
- 200amp 3phase electric service with sub feeds

Demographic	1 Mile	5 Miles	10 Miles
Population	7,347	26,275	40,582
Households	3,133	11,303	17,230
Average H.H. Income	\$75,995	\$79,177	\$82,371
Daytime Employees	4,224	9,406	13,123
Source: ESRI Business Analyst 2024			

Traffic Counts	
S Caroline Street	7,822 AADT
Route 5	16,023 AADT
Mohawk Street	4,799 AADT
Source: NYS DOT 2024	

Contact

JAMES DYLAN FURNEY
Associate Real Estate Broker
+1 315 225 8571
jfurney@pyramidbrokerage.com

NICHOLAS CIGNARALE
Real Estate Salesperson
+1 315 617 2662
ncignarale@pyramidbrokerage.com

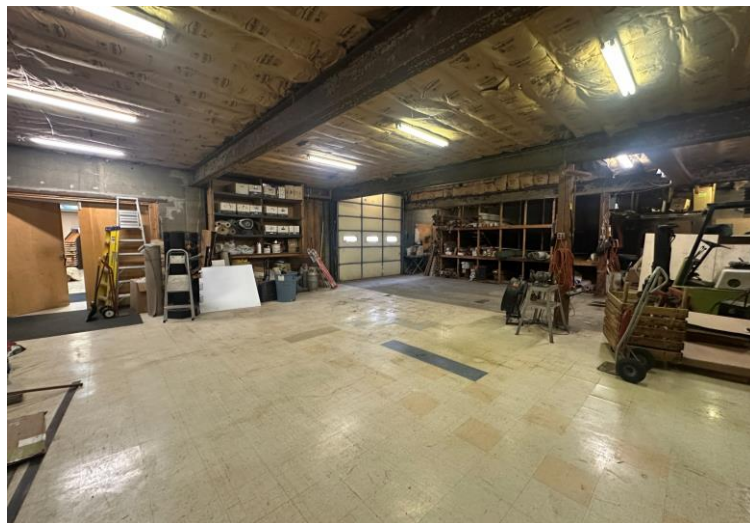
587 Main Street, Suite 102
New York Mills, New York 13417
+1 315 736 0856
pyramidbrokerage.com

FOR SALE

218 S Caroline St. | Herkimer, New York



Exterior



Warehouse



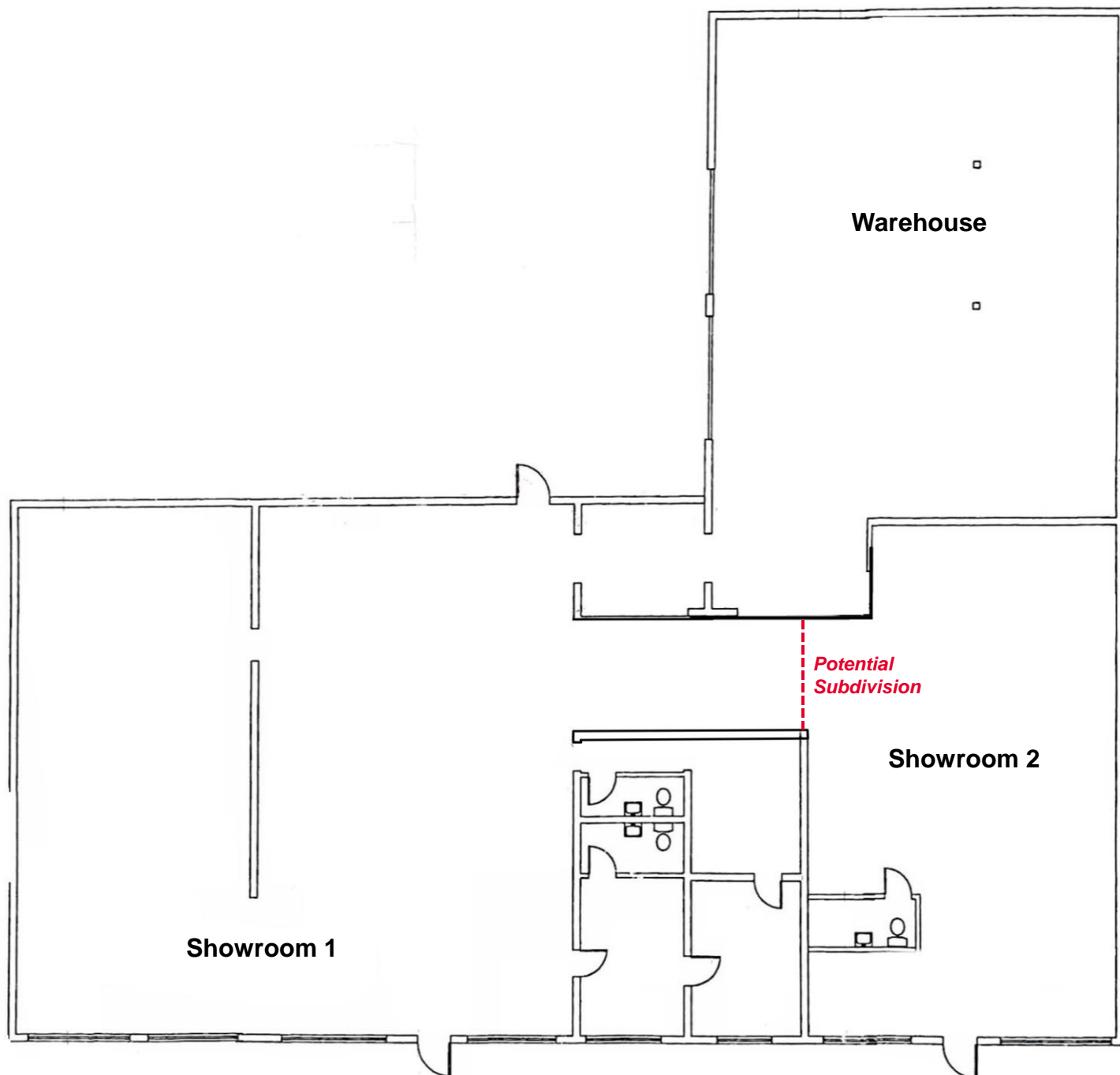
Showroom 1



Showroom 2

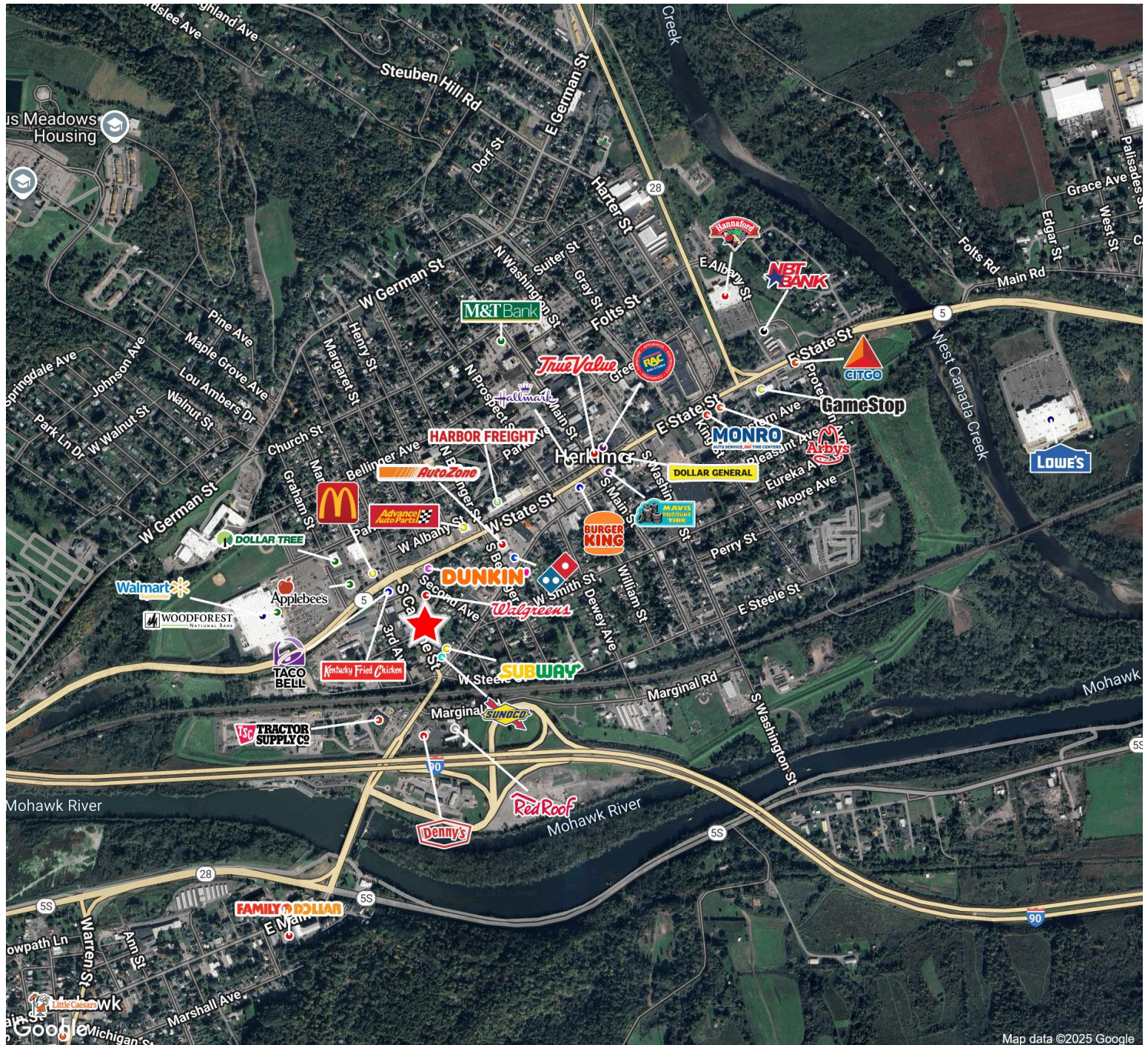
FOR SALE

218 S Caroline St. | Herkimer, New York



FOR SALE

218 S Caroline St. | Herkimer, New York



Independently Owned and Operated / A Member of the Cushman & Wakefield Alliance

Cushman & Wakefield Copyright 2025. No warranty or representation, express or implied, is made to the accuracy or completeness of the information contained herein, and same is submitted subject to errors, omissions, change of price, rental or other conditions, withdrawal without notice, and to any special listing conditions imposed by the property owner(s). As applicable, we make no representation as to the condition of the property (or properties) in question.