

FOR LEASE

965 E. 11th Street
Loveland, CO

HIGH-QUALITY INDUSTRIAL/FLEX/RETAIL UNIT

PROPERTY TYPE

**FLEX/
INDUSTRIAL**

AVAILABLE

2,324 RSF

PRICE

**\$14/RSF NNN
\$6.98/SF NNN EST.**



FEATURES:

- End unit with lots of windows for natural light
- Excellent central Loveland location
- Easy access to I25 and Northern Colorado
- 14' overhead door, 200 amp, 3 phase power
- Central air conditioning
- Quality block construction & corrugated steel protected walls

REALTEC
COMMERCIAL REAL ESTATE SERVICES

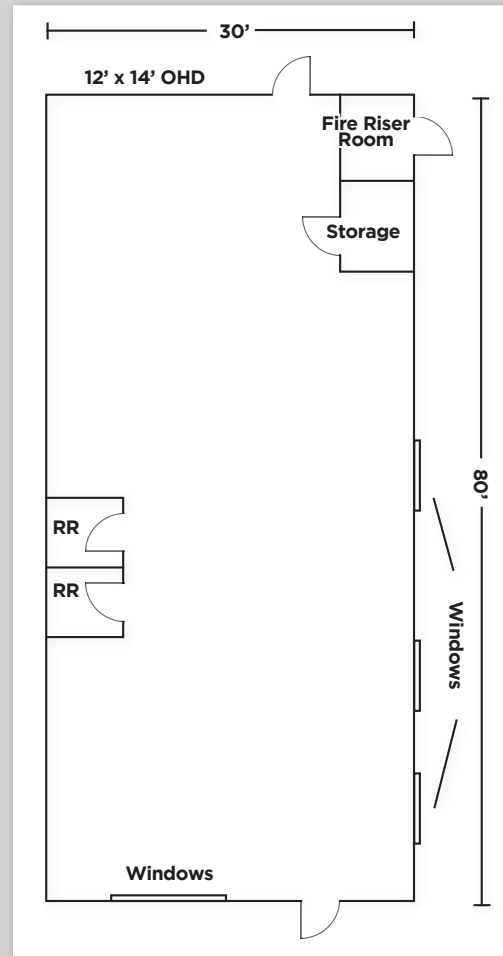
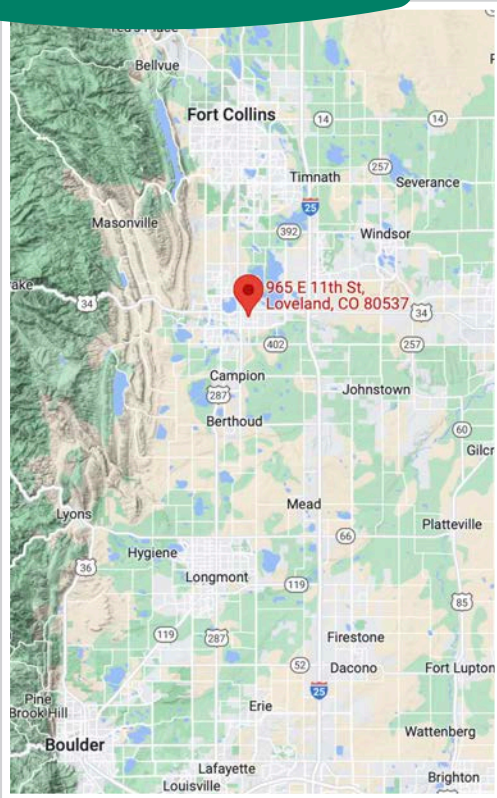
Bruce Campbell
970.231.6824
bruce@realtec.com

Patrick O'Donnell
970.231.5576
patricko@realtec.com

VIEW MORE REALTEC LISTINGS AT WWW.REALTEC.COM

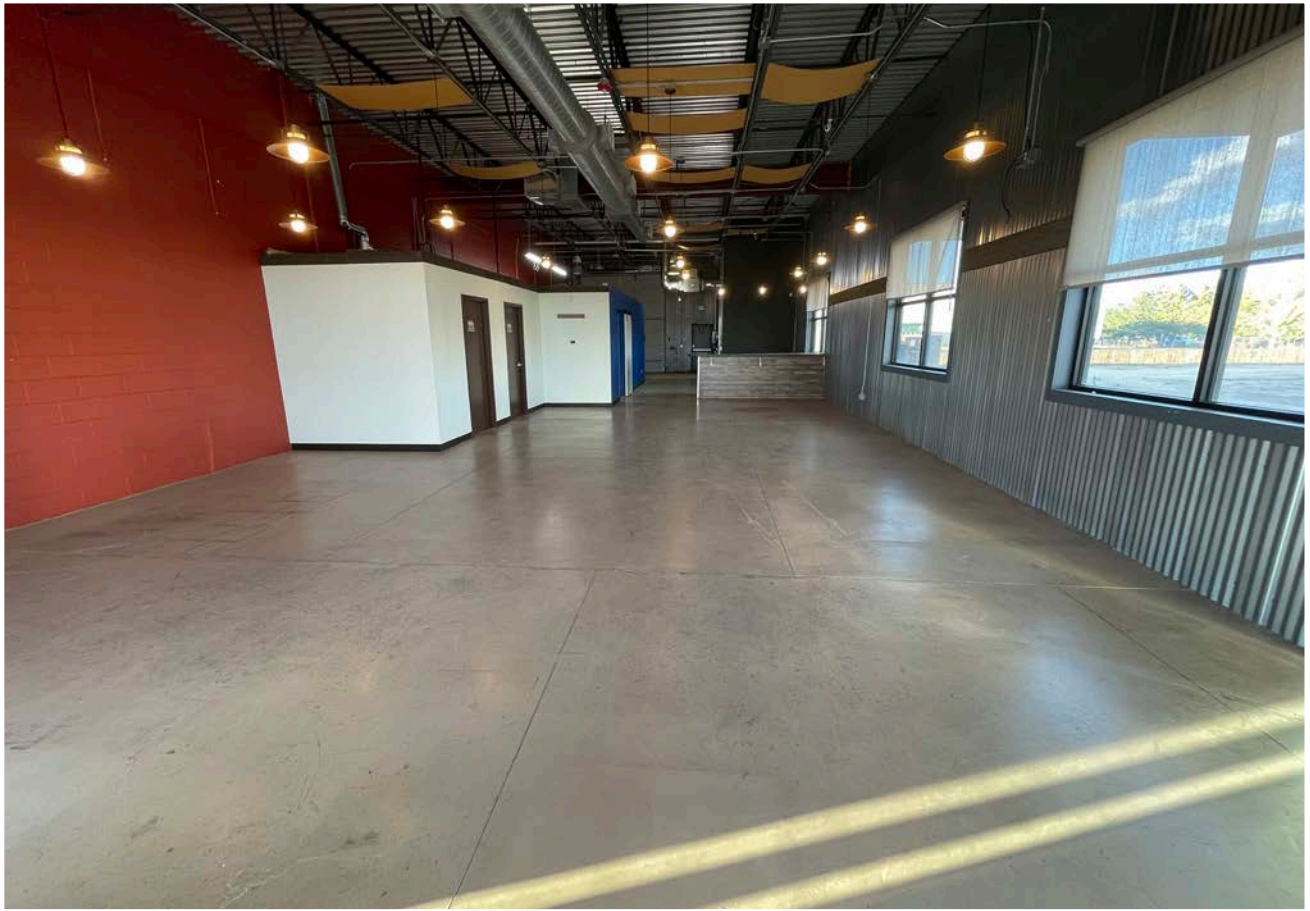
FOR LEASE

965 E. 11th Street
Loveland, CO



FOR LEASE

965 E. 11th Street
Loveland, CO



Fort Collins

712 Whalers Way, Bldg. B, Suite
300 Fort Collins, CO 80525
970-229-9900

Loveland

200 E. 7th Street, Suite 418
Loveland, CO 80537
970-593-9900

Greeley

1711 61st Ave, Suite 104
Greeley, CO 80634
970-346-9900

REALTEC
COMMERCIAL REAL ESTATE SERVICES