



# FOR LEASE

MORONET PROFESSIONAL BUILDING

**1522** 18TH  
STREET

Bakersfield, CA 93301

Alex Balfour, SIOR

Executive Director

+1 661 304 2521

[alex.balfour@cushwake.com](mailto:alex.balfour@cushwake.com)

LIC. 0170984

Kristin Frickel

Associate

+1 661 912 6005

[kristin.frickel@cushwake.com](mailto:kristin.frickel@cushwake.com)

LIC. 02249947

5060 California Avenue

Suite 1000

Bakersfield, CA 93309

Main +1 661 327 2263

Fax +1 661 633 3801

[cushmanwakefield.com](http://cushmanwakefield.com)



# PROPERTY HIGHLIGHTS

- Centrally located in Downtown Bakersfield's financial, government, and arts districts.
- Walking distance to the Kern County Courthouse, Bakersfield City Hall, Mercy Hospital, and Mechanics Bank Arena.
- 3-story building with elevator access.
- Access to a community kitchen and conference room at no extra cost.
- PG&E included with each unit.
- High-speed internet, TV, and phone available via Spectrum and AT&T (not included).
- City parking nearby at affordable rates or on-street parking (first-come, first-serve).

## AVAILABLE SUITES

Suite 203: ±840 SF - Monthly Rent: \$1,395

Suite 209: ±540 SF - Monthly Rent: \$995

Suite 310: ±180 SF - Monthly Rent: \$450

Suite 315: ±155 SF - Monthly Rent: \$450

## MOVE-IN SPECIAL

First Month free with 2-year lease, approved application & deposit.

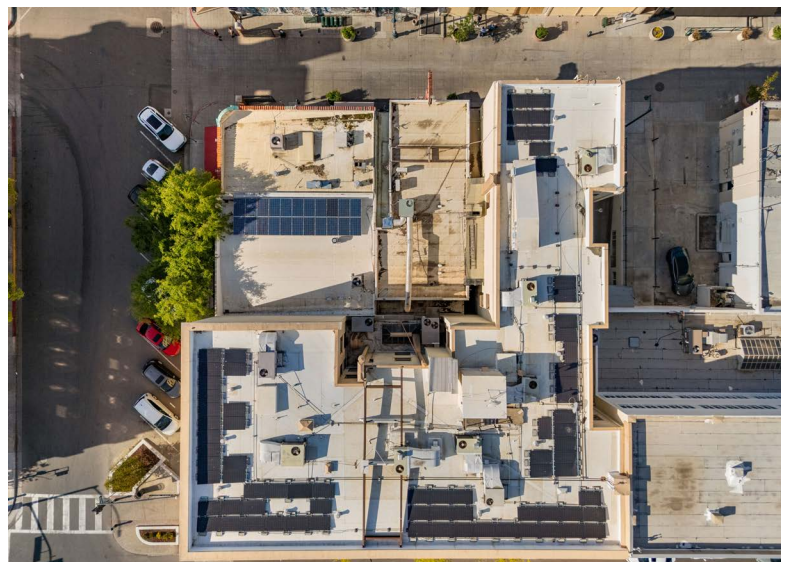


# PROPERTY PHOTOS



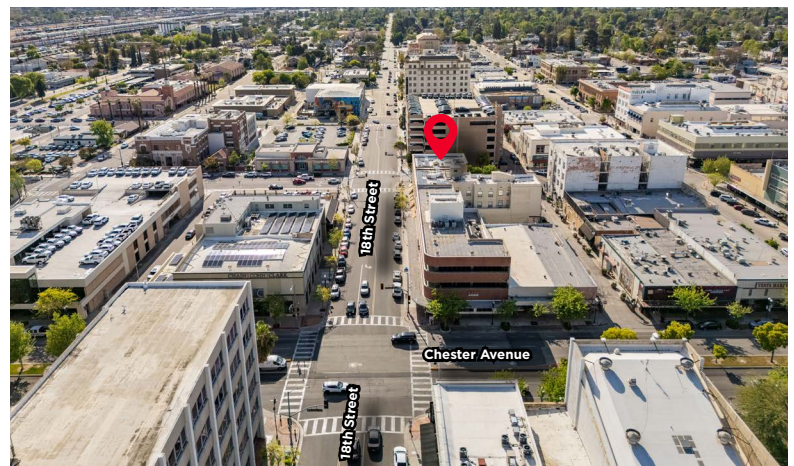
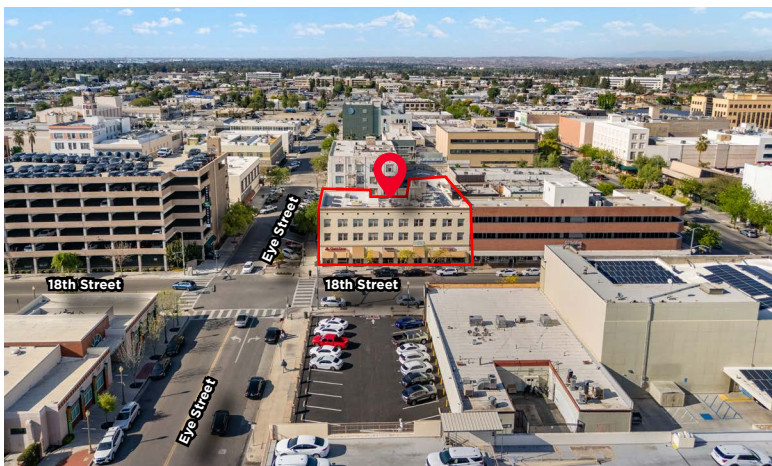


# INTERIOR PHOTOS





# PROPERTY LOCATION







Alex Balfour, SIOR  
Executive Director

+1 661 304 2521

[alex.balfour@cushwake.com](mailto:alex.balfour@cushwake.com)

LIC. 0170984

Kristin Frickel

Associate

+1 661 912 6005

[kristin.frickel@cushwake.com](mailto:kristin.frickel@cushwake.com)

LIC. 02249947

5060 California Avenue

Suite 1000

Bakersfield, CA 93309

Main +1 661 327 2263

Fax +1 661 633 3801

[cushmanwakefield.com](http://cushmanwakefield.com)



©2024 Cushman & Wakefield. All rights reserved. The information contained in this communication is strictly confidential. This information has been obtained from sources believed to be reliable but has not been verified. NO WARRANTY OR REPRESENTATION, EXPRESS OR IMPLIED, IS MADE AS TO THE CONDITION OF THE PROPERTY (OR PROPERTIES) REFERENCED HEREIN OR AS TO THE ACCURACY OR COMPLETENESS OF THE INFORMATION CONTAINED HEREIN, AND SAME IS SUBMITTED SUBJECT TO ERRORS, OMISSIONS, CHANGE OF PRICE, RENTAL OR OTHER CONDITIONS, WITHDRAWAL WITHOUT NOTICE, AND TO ANY SPECIAL LISTING CONDITIONS IMPOSED BY THE PROPERTY OWNER(S). ANY PROJECTIONS, OPINIONS OR ESTIMATES ARE SUBJECT TO UNCERTAINTY AND DO NOT SIGNIFY CURRENT OR FUTURE PROPERTY PERFORMANCE.