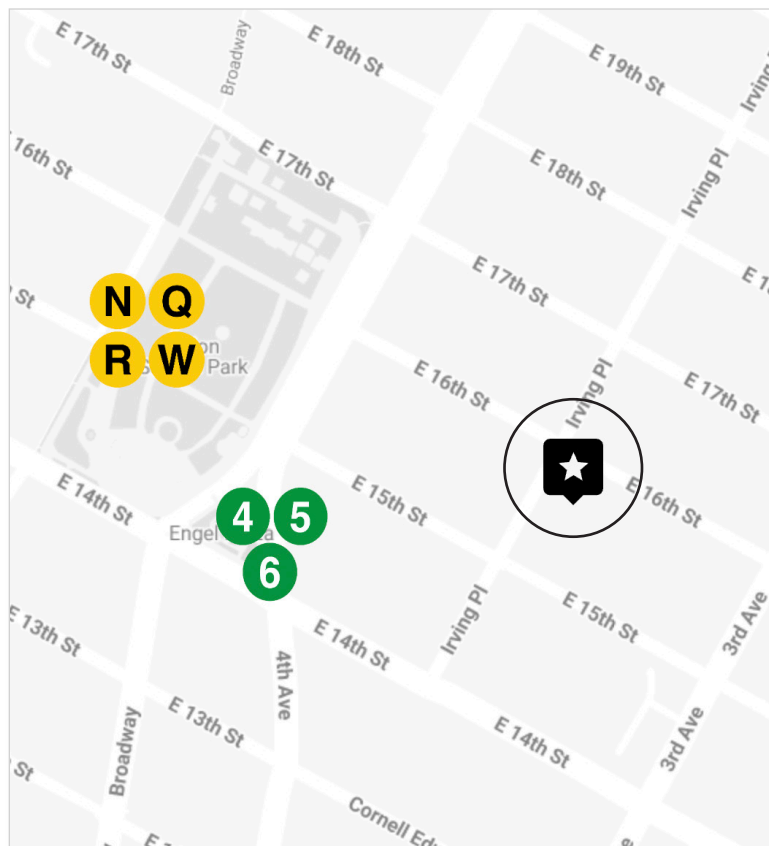


PROFESSIONAL **OFFICE SPACE** FOR SUBLEASE

PRICE	INQUIRE
APPROX SIZE	9,353+/- RSF
TERM	12/31/27
POSSESSION	IMMEDIATE



30 IRVING PLACE, FLOOR 5
BETWEEN EAST 15TH AND EAST 16TH STREET

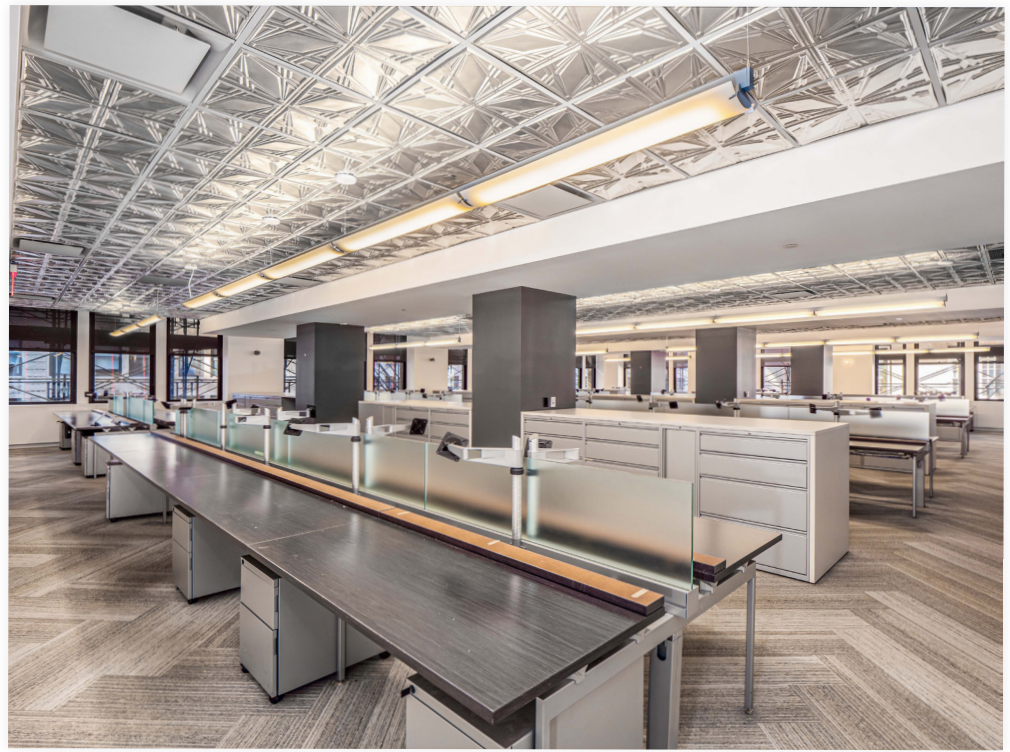
LAYOUT

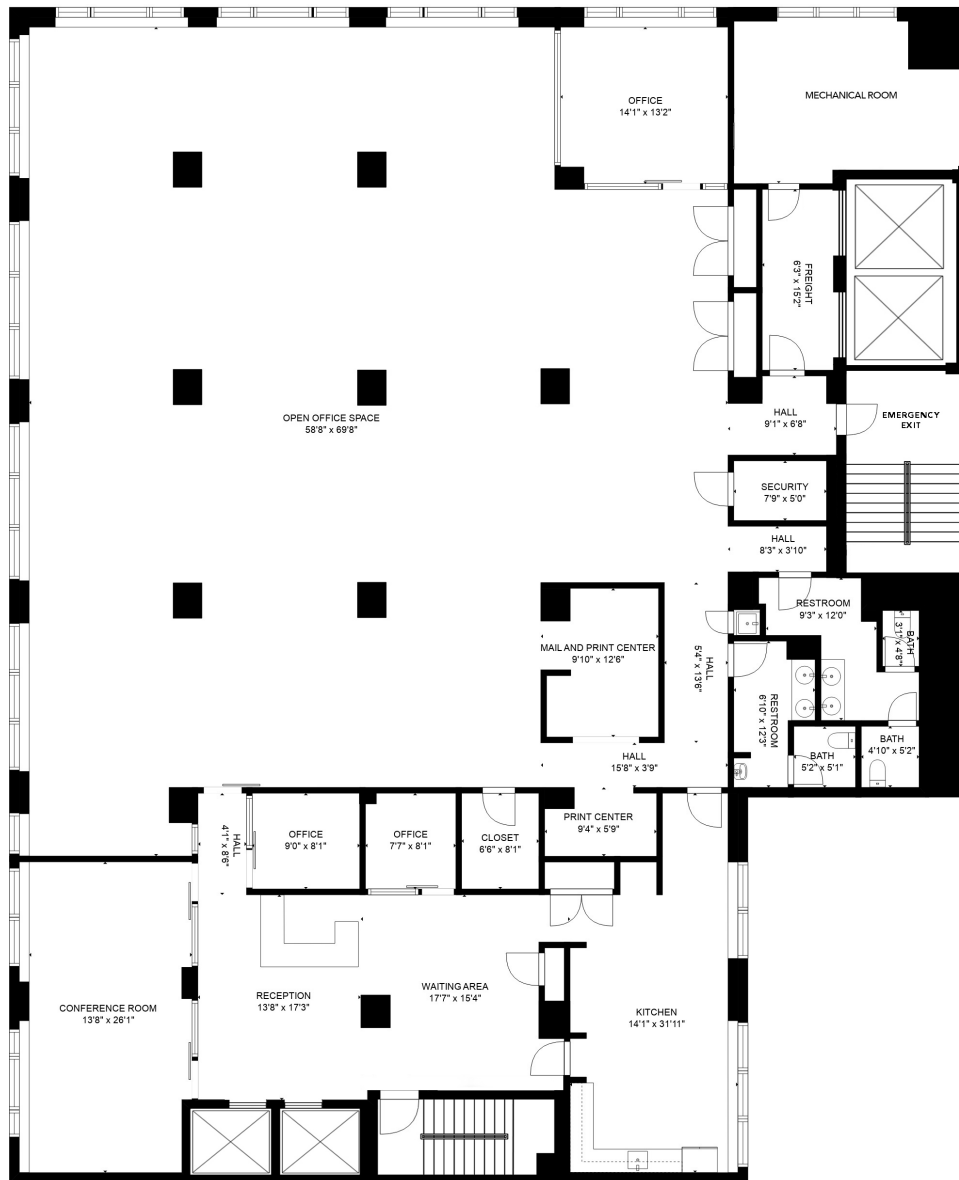
- RECEPTION AREA
- WAITING AREA
- TWO CONFERENCE ROOMS
- TWO PRIVATE OFFICES
- BULLPEN SHARED OFFICE SPACE (64 WORKSTATIONS)
- PRINT CENTER
- STORAGE ROOM
- SIX STORAGE ROOMS/CLOSETS
- KITCHEN
- TWO RESTROOMS

ADDITIONAL FEATURES

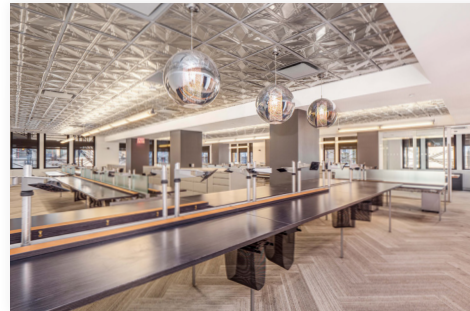
- EASY AND ACCESSIBLE PUBLIC TRANSPORTATION
- ONE BLOCK FROM UNION SQUARE PARK
- 10-FOOT CEILINGS
- CENTRAL AIR CONDITIONING







FLOOR PLAN FOR ILLUSTRATIVE PURPOSES ONLY



Paul L Wexler

LICENSED ASSOCIATE
REAL ESTATE BROKER

P: 212.836.1075
E: PWexler@corcoran.com

Josef Yadgarov

LICENSED ASSOCIATE
REAL ESTATE BROKER

P: 212.836.1097
E: josef.yadgarov@corcoran.com

Alisia Ramlochan

LICENSED ASSOCIATE
REAL ESTATE BROKER

P: 212.893.1450
E: alisia.ramlochan@corcoran.com

Kurt Herold

LICENSED ASSOCIATE
REAL ESTATE BROKER

P: 212.323.3817
E: kherold@corcoran.com

Cosmin Bitu

LICENSED REAL ESTATE
SALESPERSON

P: 917.602.5754
E: cosmin.bitu@corcoran.com