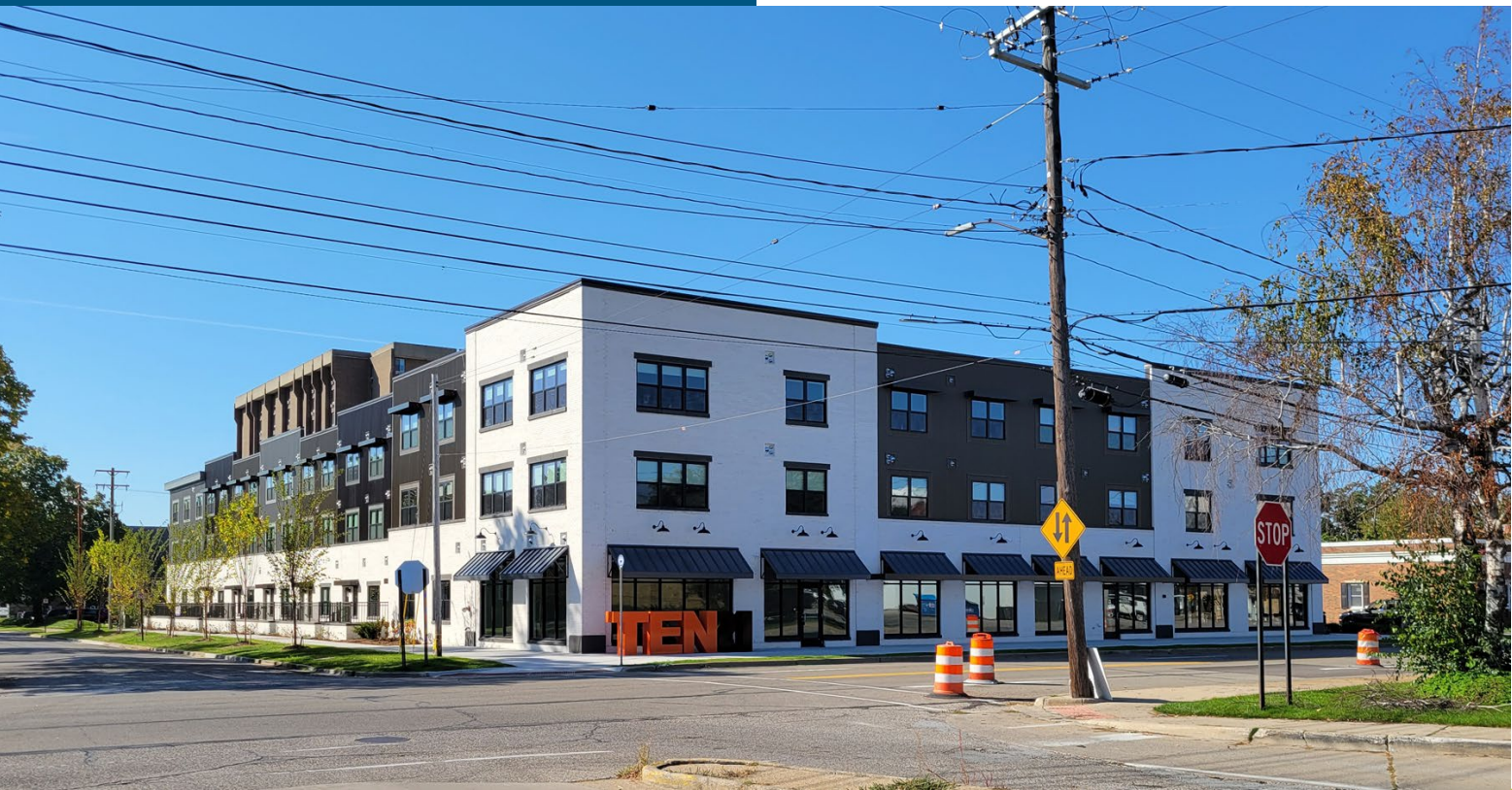


1021 Jefferson Street
Muskegon, Michigan



Commercial Space For Lease

- 1,000 - 2,028 Square Feet Available
- New construction commercial space within a mixed-use, multi-story building in downtown Muskegon
- Situated within the busy Apple Avenue corridor in proximity to the Muskegon County administrative complex
- Walking distance to downtown restaurants and events
- Street level space would be an excellent location for legal services or professional office user, or a street retail operation
- Ample on-site parking within the professionally-managed development
- Asking rate includes developer build-out to white-box state
- Lease Price: \$12.50/SF/Yr NNN

For more information, please contact:

BRYAN BENCH
231 578 2508
bryanbench@corerealty.com

TROY WASSERMAN
231 750 9627
troywasserman@corerealty.com

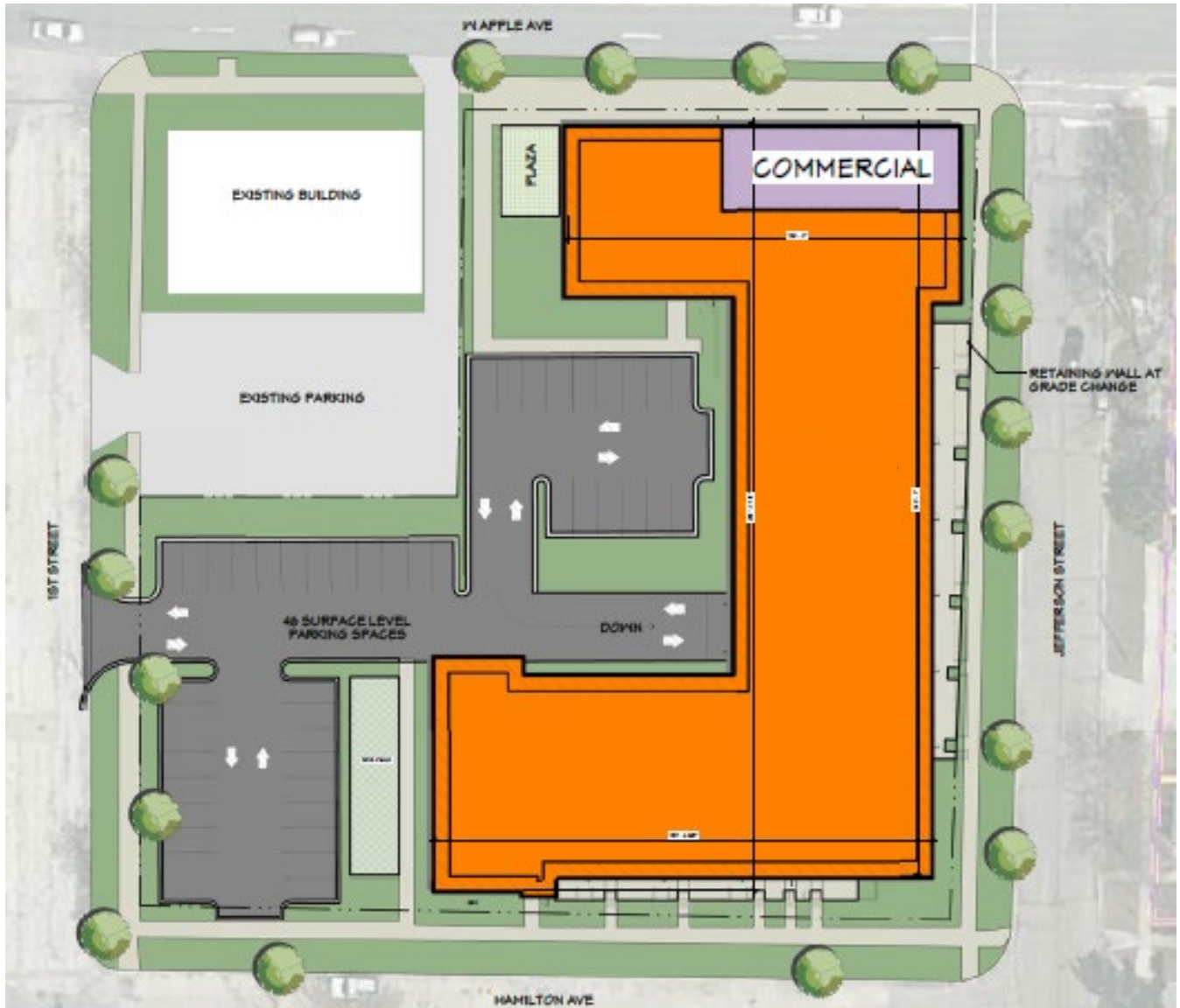
Connect with us:



CORE REALTY PARTNERS

221 W. Webster Avenue
Muskegon, MI 49440
www.corerealty.com

Site Plan



For more information, please contact:

BRYAN BENCH
231 578 2508
bryanbench@corerealty.com

TROY WASSERMAN
231 750 9627
troywasserman@corerealty.com

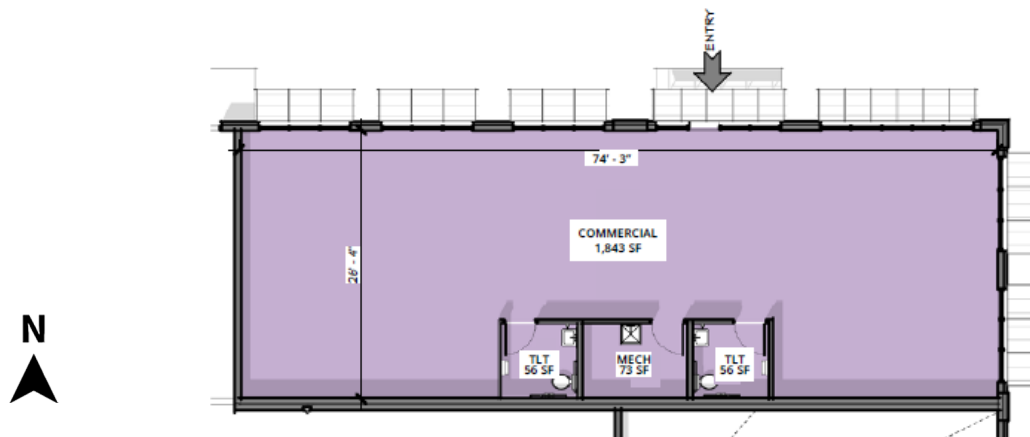
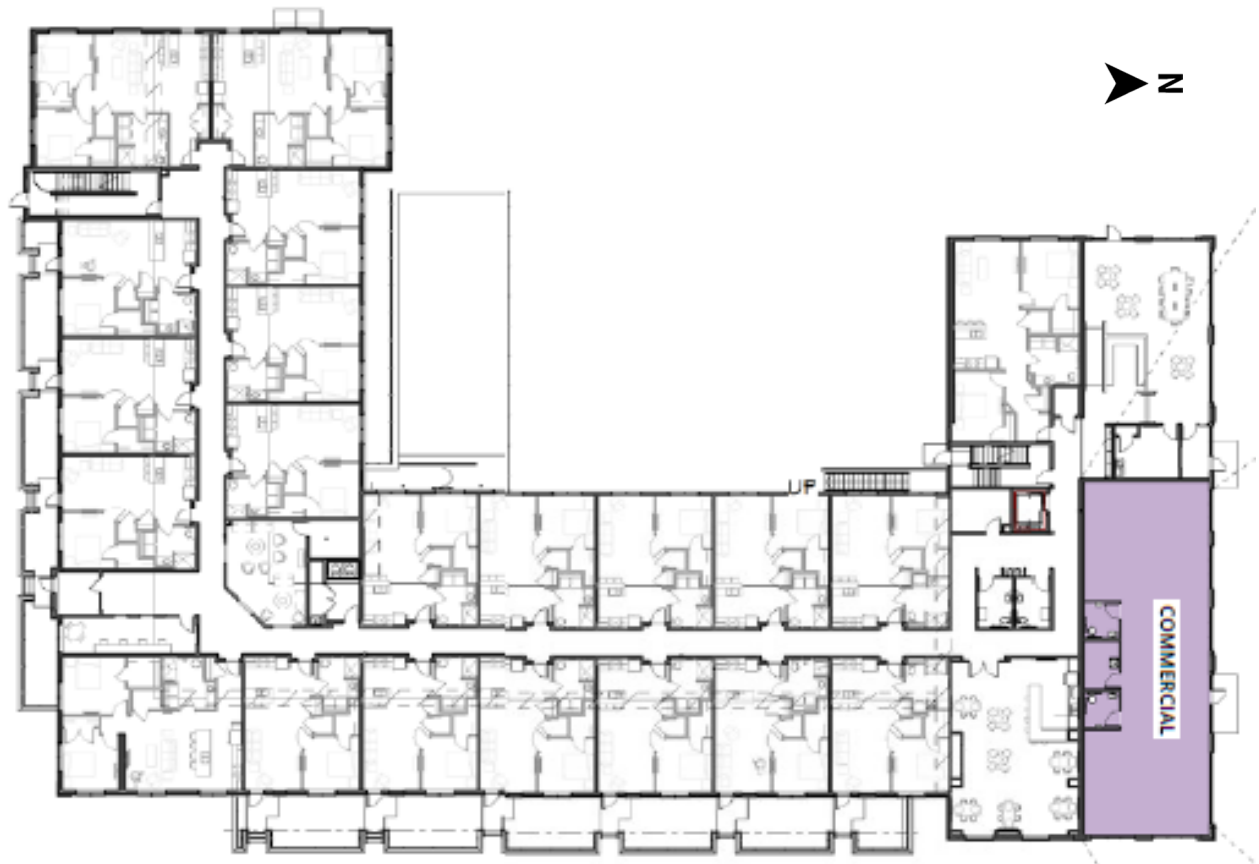
Connect with us:



CORE REALTY PARTNERS

221 W. Webster Avenue
Muskegon, MI 49440
www.corerealty.com

Floor Plan



For more information, please contact:

BRYAN BENCH
231 578 2508
bryanbench@corerealty.com

TROY WASSERMAN
231 750 9627
troywasserman@corerealty.com

Connect with us:



CORE REALTY PARTNERS

221 W. Webster Avenue
Muskegon, MI 49440
www.corerealty.com

Aerial



- Located on high visibility West Apple Avenue corridor in the heart of the court district
- Walking distance to downtown
- Site surrounded by residential and business
- Ground floor commercial space in mixed-use 73-unit building
- Walk score of 84 – “Very Walkable”
- Off-street parking potential
- Base rent includes white box build out
- Floor to ceiling storefront glass

For more information, please contact:

BRYAN BENCH
231 578 2508
bryanbench@corerealty.com

TROY WASSERMAN
231 750 9627
troywasserman@corerealty.com

Connect with us:



CORE REALTY PARTNERS

221 W. Webster Avenue
Muskegon, MI 49440
www.corerealty.com