



Colliers



For Lease

Gardena Business Park

Industrial Building

±13,752 SF

Contact us:

Thomas Condon

Senior Executive Vice President
License No. 00881755
+1 323 278 3114
thomas.condon@colliers.com

Nick Sablock

Vice President
License No. 02127272
+1 562 293 6007
nick.sablock@colliers.com

Colliers International

865 S Figueroa Street, Suite 3500
Los Angeles, CA 90017

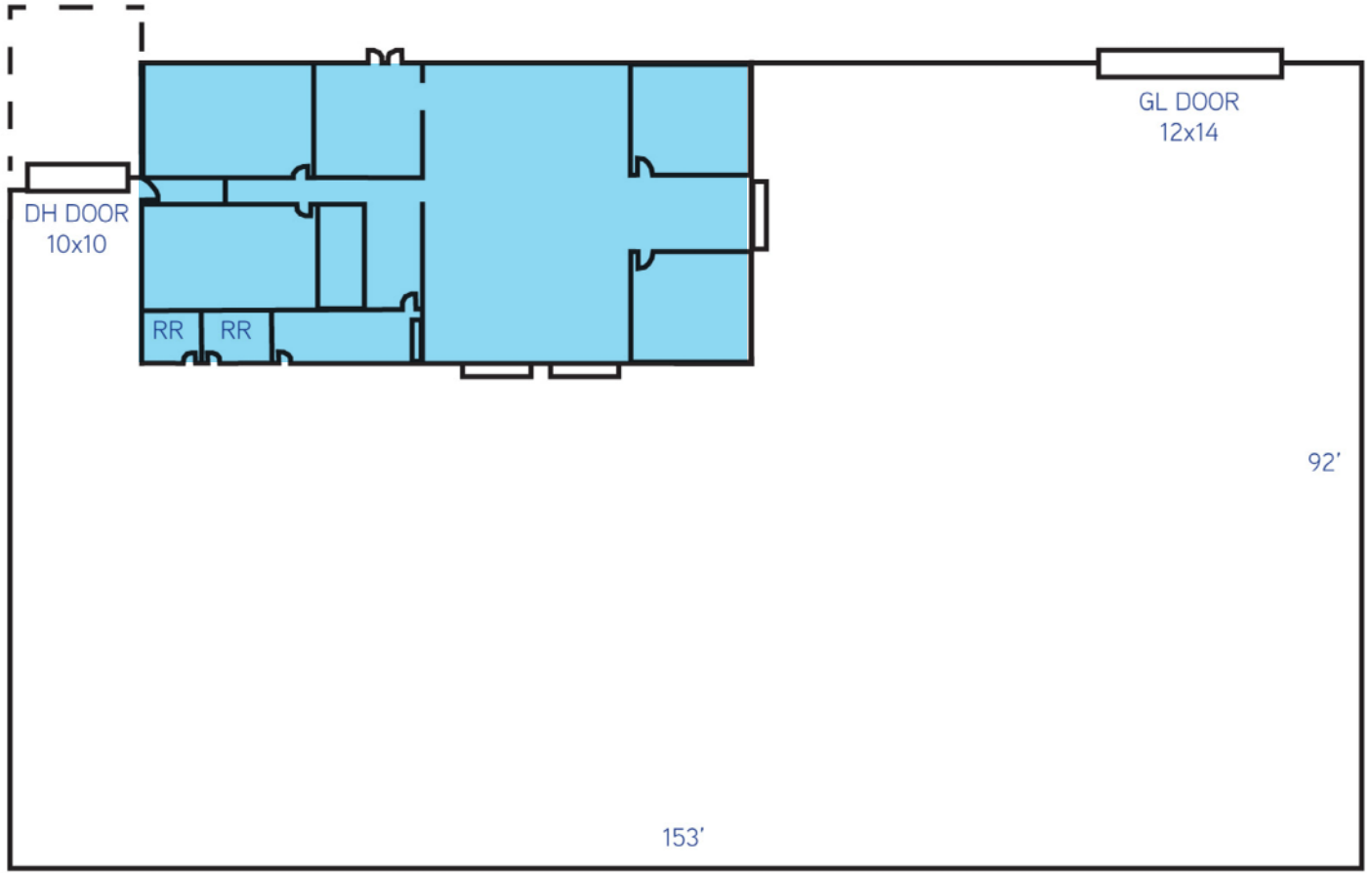
13635 Gramercy Place
Gardena, CA 90249

Features

- Free-Standing Building
- Building Size: ±13,572 SF
- Land Size: ±30,298 SF (±0.695 Acres)
- Office Size: ±2,297 SF
- Ceiling Height: 14'
- Loading: 1 DH / 1 Ground Level
- Fully Sprinklered
- Restrooms: 2
- Power: 400 Amps 120-208 Volts
- Large Private, Fenced, Paved, Secure Yard
- Location: Quick Access to 110/405/91/105 Freeways

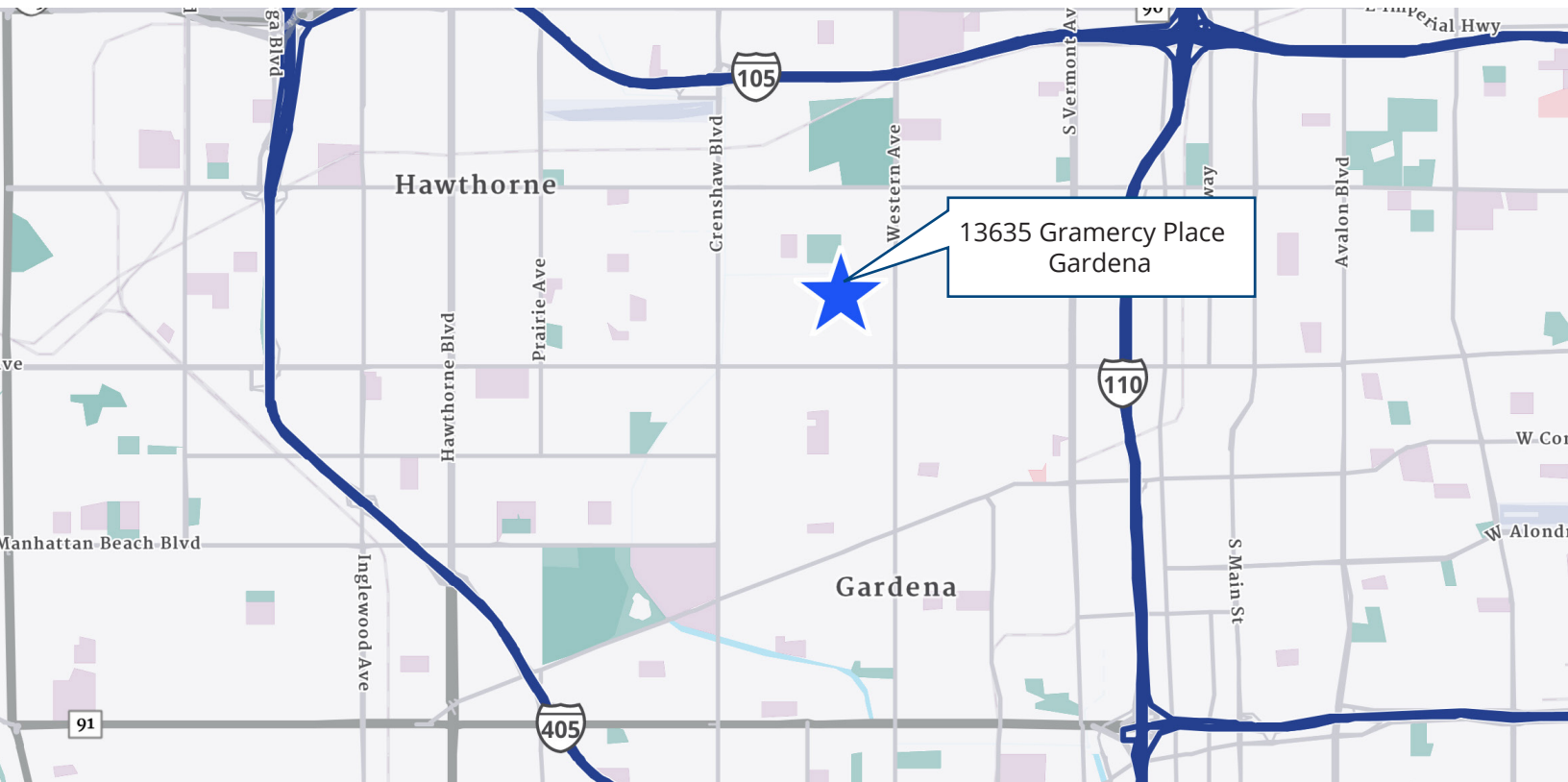
Copyright © 2025 Colliers International. Information herein has been obtained from sources deemed reliable, however its accuracy cannot be guaranteed. The user is required to conduct their own due diligence and verification.

Site Plan



*Floor Plan Not Drawn to Scale

Locator Map



Photos



Contact us:

Thomas Condon

Senior Executive Vice President
License No. 00881755
+1 323 278 3114
thomas.condon@colliers.com

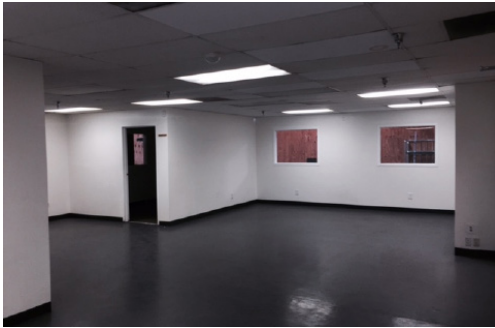
Nick Sablock

Vice President
License No. 02127272
+1 562 293 6007
nick.sablock@colliers.com

Colliers International

865 S Figueroa Street, Suite 3500
Los Angeles, CA 90017

Photos



Contact us:

Thomas Condon

Senior Executive Vice President
License No. 00881755
+1 323 278 3114
thomas.condon@colliers.com

Nick Sablock

Vice President
License No. 02127272
+1 562 293 6007
nick.sablock@colliers.com

Colliers International

865 S Figueroa Street, Suite 3500
Los Angeles, CA 90017