

FULLY

RENOVATED

**Ideal for Manufacturing, Warehousing, Auto Repair/
Service, Food Users, Art Storage or Specialty Uses
requiring Full Temperature Controlled Facility**



UNIT B

[Click Here 1st Floor Video](#)



**FOR
LEASE**

**+9,500 SF INDUSTRIAL WAREHOUSE
WITH PRIVATE YARD**

3535 N ANZA ROAD, UNIT B
PALM SPRINGS, CA 92262

ROCKY MORAN | Sr. Vice President
951.276.3681
rmoran@leeriverside.com
DRE 01841701

 **LEE &
ASSOCIATES**
COMMERCIAL REAL ESTATE SERVICES



PROPERTY FEATURES

- ▶ Unit B: ±9,500 SF Industrial Warehouse with Private Yard
- ▶ Lease Rate: \$0.75 PSF NNN
- ▶ 1,500 Amps of Power
- ▶ Full Temperature Controlled Warehouse
- ▶ Ideal for Food Users, with Floor Drains Throughout
- ▶ Flexible Heavy Zoning
- ▶ Ideal for Manufacturing, Warehousing, Distribution, Auto Repair or Auto Service or any Specialty Use requiring HVAC in Warehouse
- ▶ Fully Renovated
- ▶ Corner Location in Highly Image Industrial Development
- ▶ Easy Access to 10 Fwy or Hwy 111
- ▶ 2 Roll Up Doors
- ▶ Fully Sprinklered
- ▶ 16' - 18' Clear Heights Throughout
- ▶ Equipped with High Tech Security System Capabilities
- ▶ Located North of Downtown Palm Springs just West of Indian Canyon Drive in the Industrial Area

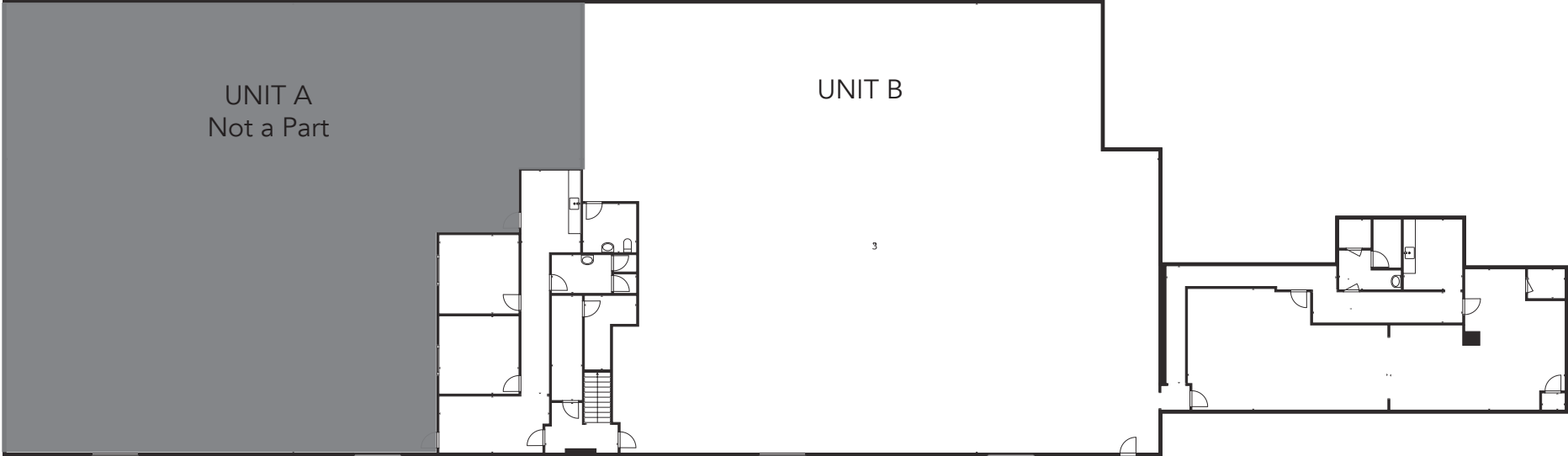
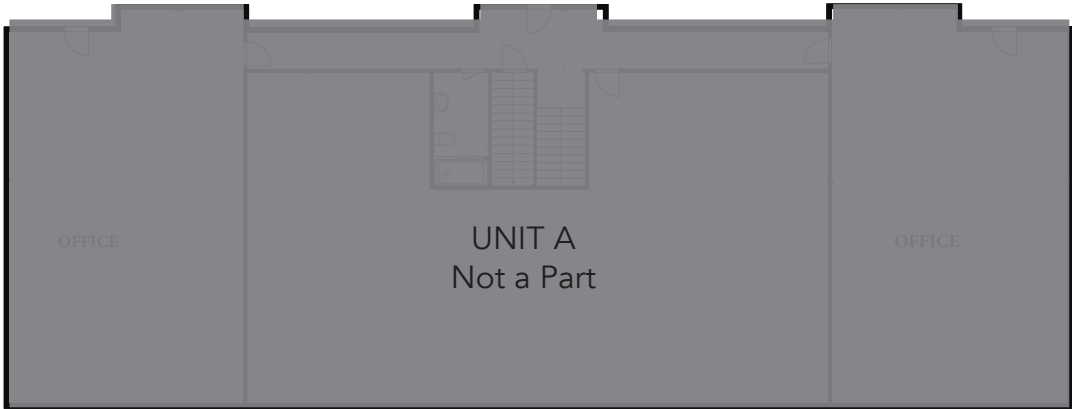
3535 N ANZA ROAD | PALM SPRINGS, CA 92262



ROCKY MORAN | Senior Vice President | 951.276.3681 | rmoran@leeriverside.com | DRE 01841701

No warranty or representation has been made to the accuracy of the foregoing information. Terms of sale or lease and availability are subject to change or withdrawal without notice. Lee & Associates Commercial Real Estate Services, Inc. - Riverside. 3240 Mission Inn Avenue, Riverside, CA 92507 | Corporate ID# 01048055

2nd Floor



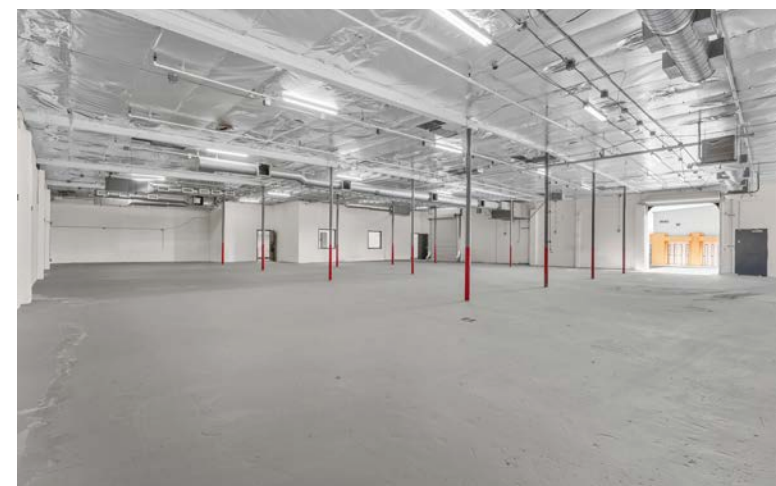
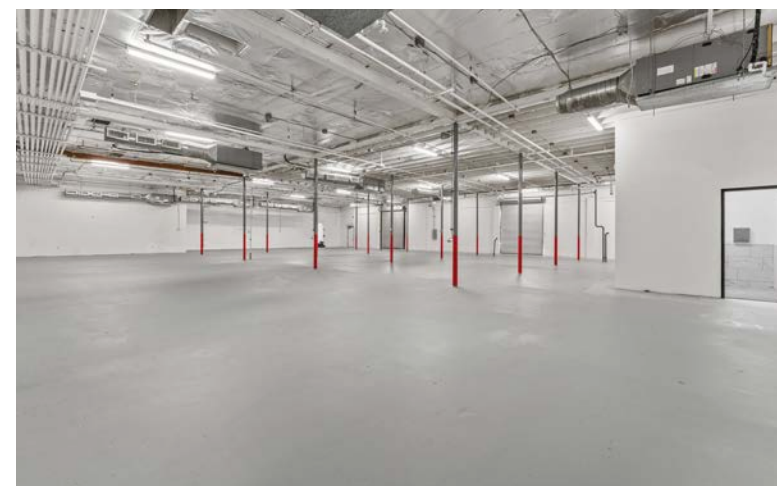
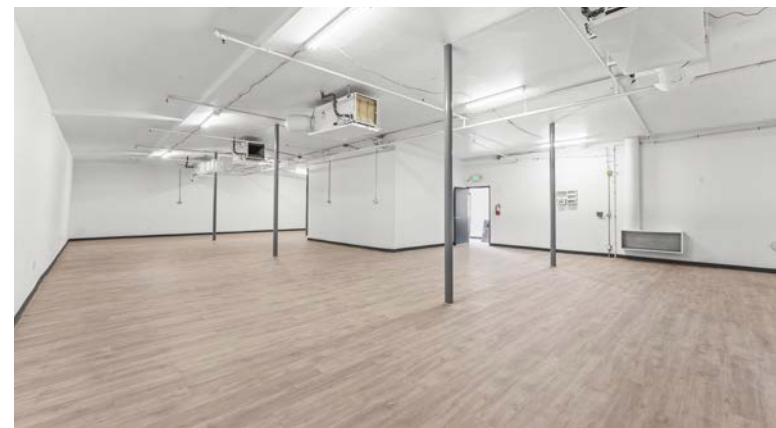
First Floor

3535 N ANZA ROAD | PALM SPRINGS, CA 92262



ROCKY MORAN | Senior Vice President | 951.276.3681 | rmoran@leeriverside.com | DRE 01841701

No warranty or representation has been made to the accuracy of the foregoing information. Terms of sale or lease and availability are subject to change or withdrawal without notice. Lee & Associates Commercial Real Estate Services, Inc. - Riverside. 3240 Mission Inn Avenue, Riverside, CA 92507 | Corporate ID# 01048055

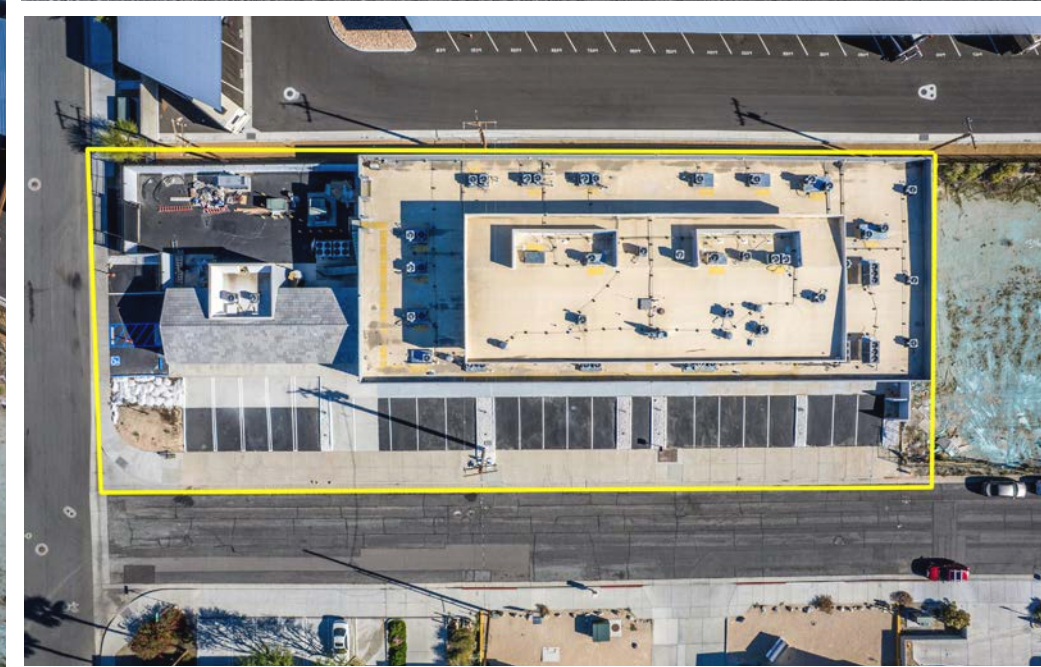


3535 N ANZA ROAD | PALM SPRINGS, CA 92262



ROCKY MORAN | Senior Vice President | 951.276.3681 | rmoran@leeriverside.com | DRE 01841701

No warranty or representation has been made to the accuracy of the foregoing information. Terms of sale or lease and availability are subject to change or withdrawal without notice. Lee & Associates Commercial Real Estate Services, Inc. - Riverside. 3240 Mission Inn Avenue, Riverside, CA 92507 | Corporate ID# 01048055



3535 N ANZA ROAD | PALM SPRINGS, CA 92262



ROCKY MORAN | Senior Vice President | 951.276.3681 | rmoran@leeriverside.com | DRE 01841701

No warranty or representation has been made to the accuracy of the foregoing information. Terms of sale or lease and availability are subject to change or withdrawal without notice. Lee & Associates Commercial Real Estate Services, Inc. - Riverside. 3240 Mission Inn Avenue, Riverside, CA 92507 | Corporate ID# 01048055

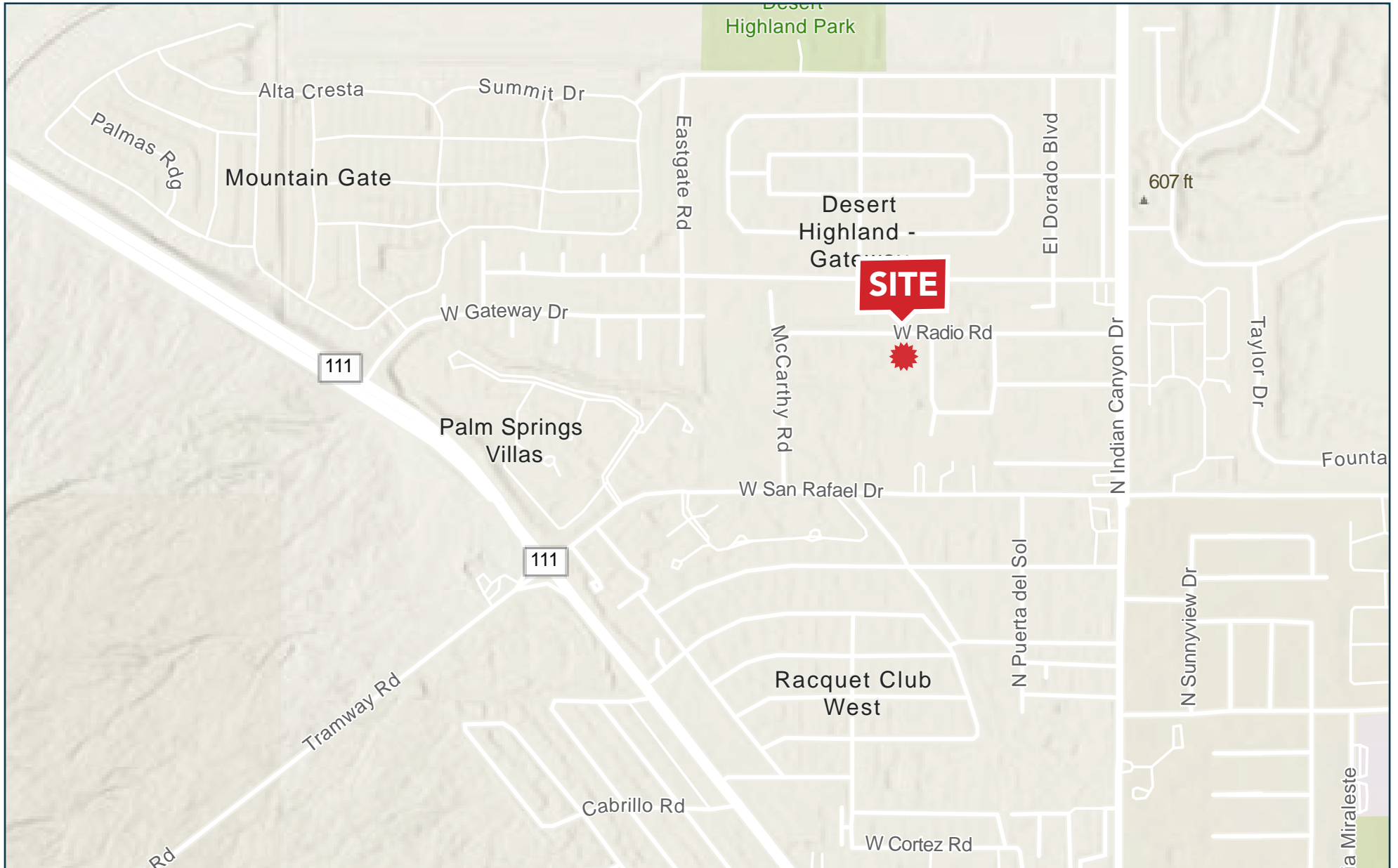


3535 N ANZA ROAD | PALM SPRINGS, CA 92262



ROCKY MORAN | Senior Vice President | 951.276.3681 | rmoran@leeriverside.com | DRE 01841701

No warranty or representation has been made to the accuracy of the foregoing information. Terms of sale or lease and availability are subject to change or withdrawal without notice. Lee & Associates Commercial Real Estate Services, Inc. - Riverside. 3240 Mission Inn Avenue, Riverside, CA 92507 | Corporate ID# 01048055



3535 N ANZA ROAD | PALM SPRINGS, CA 92262



ROCKY MORAN | Senior Vice President | 951.276.3681 | rmoran@leeriverside.com | DRE 01841701

No warranty or representation has been made to the accuracy of the foregoing information. Terms of sale or lease and availability are subject to change or withdrawal without notice. Lee & Associates Commercial Real Estate Services, Inc. - Riverside. 3240 Mission Inn Avenue, Riverside, CA 92507 | Corporate ID# 01048055