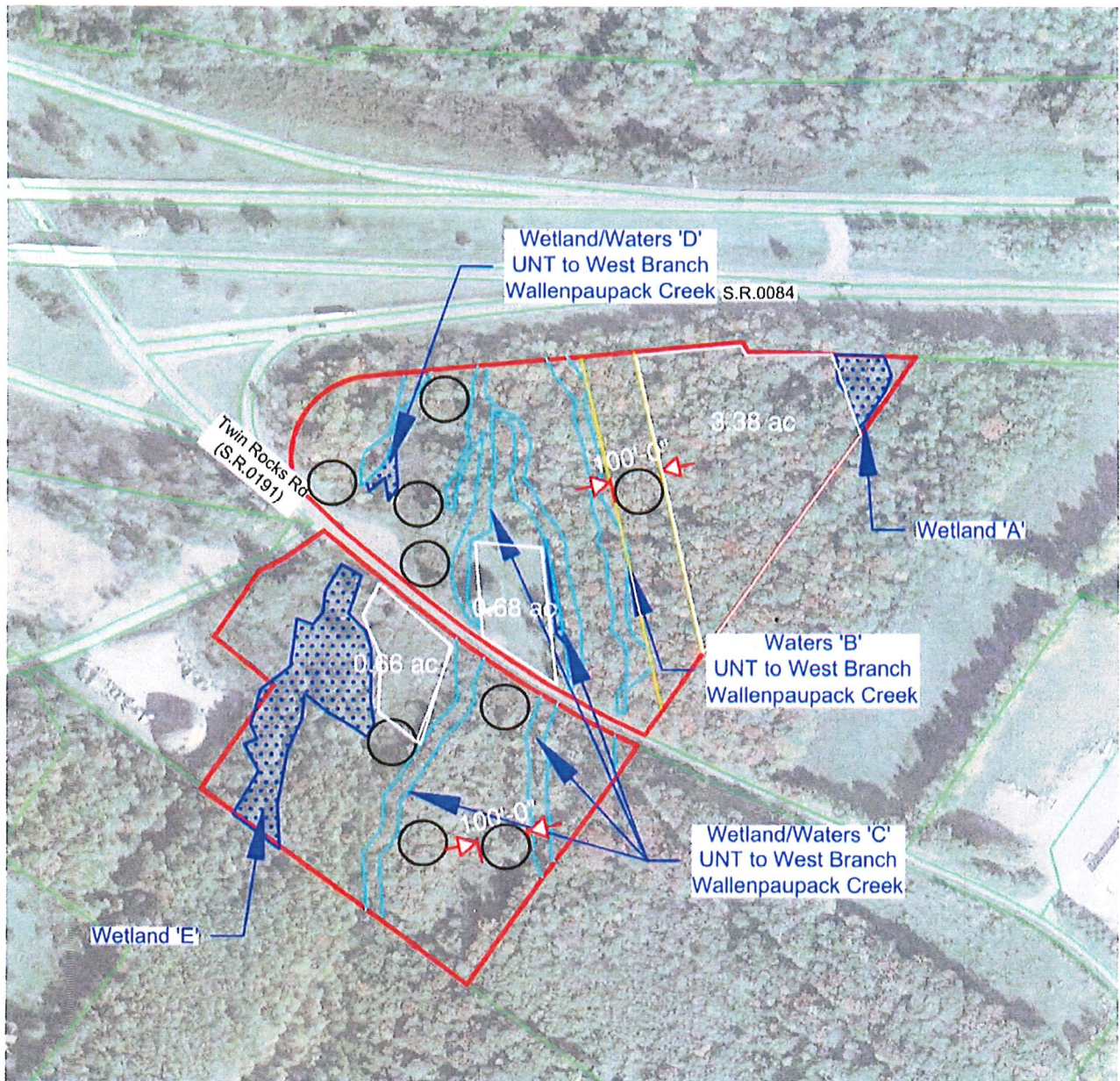


REC'D NOV -7 2024



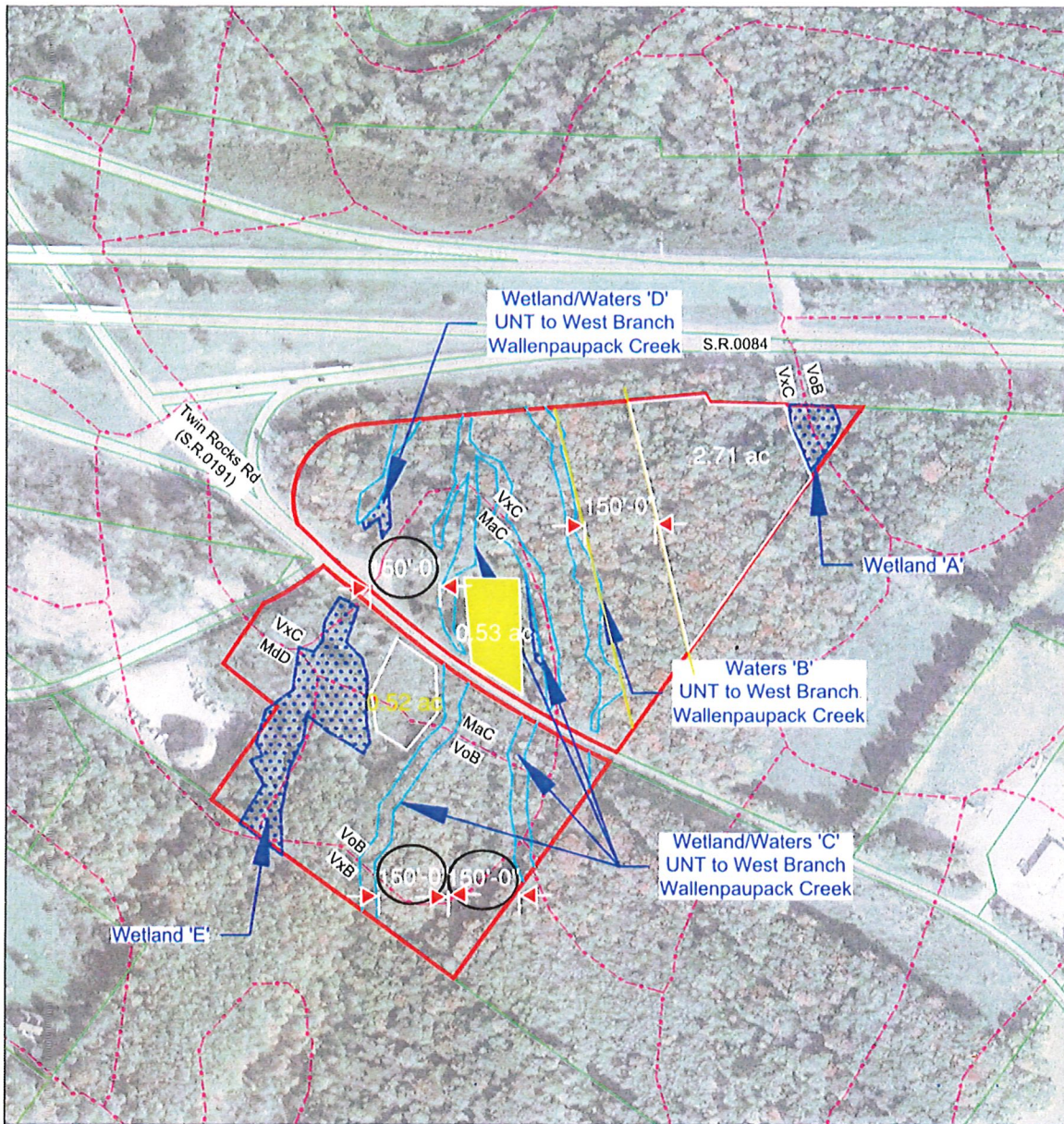
Jones Parcel – Developable Area Analysis

Minimum environmental buffer from wetlands and waters = 100'

Represented by large black circles

Net area = 3.38Ac + 0.68 Ac + 0.66 Ac = 4.72 Acres

REC'D OCT 21 2024



GIS DATA FROM PASDA AND WAYNE COUNTY

Legend

- Project Boundary
- Soils

0 300 600



Wetland Delineation
Figure 4: Soils Map
218 Twin Rocks Road
Sterling Township